

TPE2 40-80-N-A-F-I-BUBE Grundfos pump 98416415




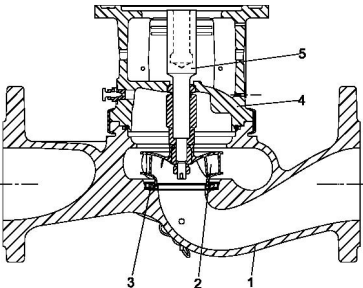
Thank you for your interest in our products. Please contact us for more information, or visit our website

<https://www.lenntech.com/grundfos/TPE3NI/98416415/TPE2-40-80-N-A-F-I-BUBE.html>

info@lenntech.com

tel. +31 152 610 900

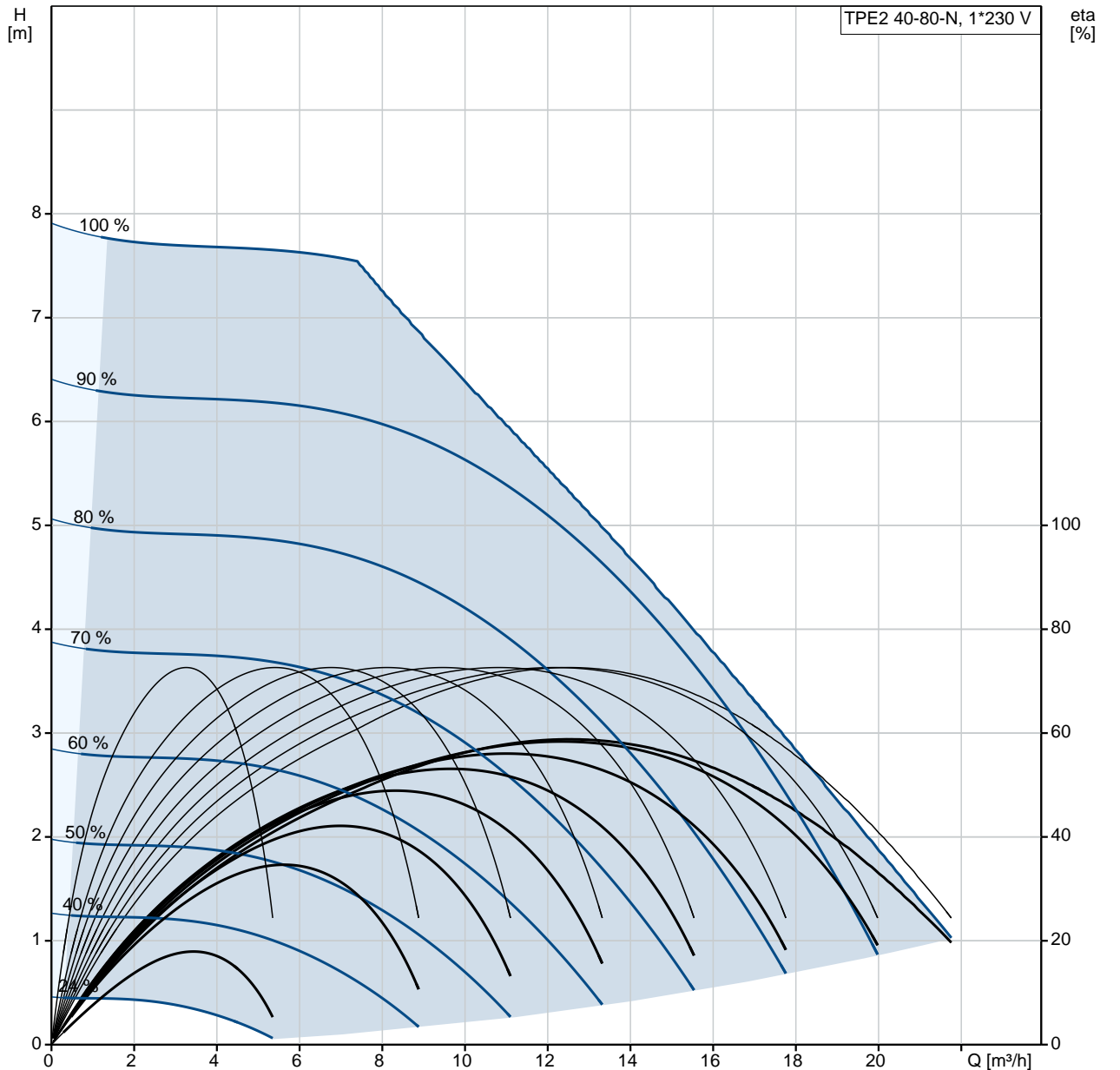
fax. +31 152 616 289

Position	Qty.	Description
	1	<p data-bbox="320 165 624 197">TPE2 40-80-N A-F-I-BUBE</p>  <p data-bbox="320 488 600 519">Product No.: On request</p> <p data-bbox="320 546 1445 622">Single-stage, close-coupled, volute pump with in-line suction and discharge ports of identical diameter. The pump is of the top-pull-out design, i.e. the power head (motor, pump head and impeller) can be removed for maintenance or service while the pump housing remains in the pipework.</p> <p data-bbox="320 631 1437 685">The shaft seal is according to EN 12756. Pipework connection is via PN 6/10 DIN flanges (EN 1092-2 and ISO 7005-2).</p> <p data-bbox="320 689 1417 743">The pump is fitted with a fan-cooled, permanent-magnet synchronous motor. The motor efficiency is classified as IE5 in accordance with IEC 60034-30-2.</p> <p data-bbox="320 748 1453 824">The motor includes a frequency converter and PI controller in the motor terminal box. This enables continuously variable control of the motor speed, which again enables adaptation of the performance to a given requirement.</p> <p data-bbox="320 862 639 893">Further product details</p> <p data-bbox="320 898 1270 929">The stainless-steel pump housing makes the pump suitable for circulation of hot water.</p> <p data-bbox="320 956 1437 1032">An operating panel on the motor terminal box enables setting of required setpoint as well as setting of pump to "Min." or "Max." operation or to "Stop". The Grundfos Eye indicator on the operating panel provides visual indication of pump status:</p> <ul data-bbox="357 1041 1437 1189" style="list-style-type: none"> • "Power on": Motor is running (rotating green indicator lights) or not running (permanently green indicator lights) • "Warning": Motor is still running (rotating yellow indicator lights) or has stopped (permanently yellow indicator lights) • "Alarm": Motor has stopped (flashing red indicator lights). <p data-bbox="320 1216 1445 1292">Communication with the pump is possible by means of Grundfos GO Remote (accessory). The remote control enables further settings as well as reading out of a number of parameters such as "Actual value", "Speed", "Power input" and total "Power consumption".</p> <p data-bbox="320 1332 1426 1408">The product's minimum efficiency index (MEI) is greater or equal to 0.70. This is by the Commission Regulation (EU) considered as an indicative benchmark for best-performing water pump available on the market as from 1 January 2013.</p> <p data-bbox="320 1447 403 1478">Pump</p> <p data-bbox="320 1482 1257 1514">Pump housing and pump head are electrocoated to improve the corrosion resistance.</p> <p data-bbox="320 1518 584 1550">Electrocoating includes:</p> <ol data-bbox="320 1554 812 1662" style="list-style-type: none"> 1) Alkaline-based cleaning. 2) Pretreatment with zinc phosphate coating. 3) Cathodic electrocoating (epoxy). 4) Curing of paint film at 200-250 °C.  <ol data-bbox="320 1993 608 2110" style="list-style-type: none"> 1: Pump housing 2: Impeller 3: Neck ring 4: Pump head/motor stool

Position	Qty.	Description
		<p>5: Stub shaft</p> <p>TWINPUMP=D}The twin-head pump is designed with two parallel power-heads. A flap valve in the common discharge port is opened by the flow of the pumped liquid and prevents backflow of liquid into the idle pump head.</p> <p>The pump housing is provided with a replaceable stainless steel/PTFE neck ring to reduce the amount of liquid running from the discharge side of the impeller to the suction side. The impeller is secured to the shaft with a nut.</p> <p>The pump is fitted with an unbalanced rubber bellows seal with torque transmission across the spring and around the bellows. Due to the bellows, the seal does not wear the shaft, and the axial movement is not prevented by deposits on the shaft.</p> <p>Primary seal:</p> <ul style="list-style-type: none"> • Rotating seal ring material: tungsten carbide (WC) • Stationary seat material: carbon graphite, resin-impregnated <p>This is a widely used material pairing. If the pumped liquid contains particles, wear on the seal faces must be expected. Due to the favourable lubricating properties of carbon graphite, the seal is suitable for use even under poor lubricating conditions, such as hot water. However, under such conditions, wear on the carbon graphite face reduces seal life.</p> <p>Secondary seal material: EPDM (ethylene-propylene rubber) EPDM has excellent resistance to hot water. EPDM is not suitable for mineral oils.</p> <p>The motor stool forms connection between the pump housing and the motor, and is equipped with a manual air vent screw for venting of the pump housing and the shaft seal chamber. The sealing between motor stool and pump housing is an O-ring.</p> <p>The central part of the motor stool is provided with guards for protection against the shaft and coupling. The pump shaft is fastened directly on the motor shaft with key and set screws.</p> <p>Motor</p> <p>The motor is a totally enclosed, fan-cooled motor with principal dimensions to IEC and DIN standards. Electrical tolerances comply with IEC 60034.</p> <p>The motor efficiency is classified as IE5 in accordance with IEC 60034-30-2.</p> <p>The motor requires no external motor protection. The motor control unit incorporates protection against slow- and quick-rising temperatures, e.g. constant overload and stalled conditions.</p> <p>The terminal box holds terminals for these connections:</p> <ul style="list-style-type: none"> • one dedicated digital input • two analog inputs, 0(4)-20 mA, 0-5 V, 0-10 V, 0.5 - 3.5 V • 5 V voltage supply to potentiometer and sensor • one configurable digital input or open-collector output • Grundfos Digital Sensor input and output • 24 V voltage supply for sensors • two signal-relay outputs (potential-free contacts) • GENIbus connection • interface for Grundfos CIM fieldbus module. <p>Technical data</p> <p>Liquid: Pumped liquid: Water Liquid temperature range: 0 .. 120 °C Liquid temperature during operation: 20 °C Density: 998.2 kg/m³</p> <p>Technical: Rated flow: 12.3 m³/h Rated head: 5.4 m Actual impeller diameter: 74 mm Primary shaft seal: BUBE Curve tolerance: ISO9906:2012 3B</p> <p>Materials: Pump housing: Stainless steel DIN W.-Nr. 1.4308</p>

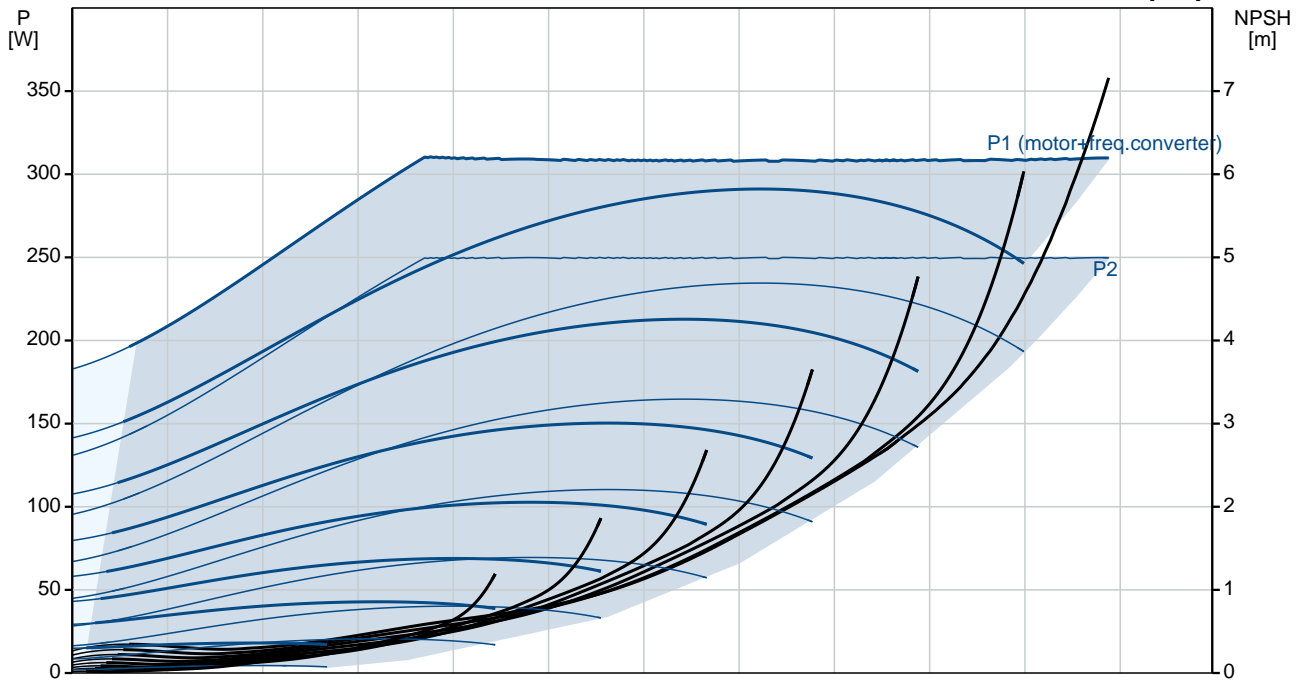
Position	Qty.	Description
		<p style="text-align: right;">ASTM CF8</p> <p>Impeller: Composite PES/PP 30% GF</p>
		<p>Installation:</p> <p>Range of ambient temperature: -20 .. 50 °C Maximum operating pressure: 10 bar Flange standard: DIN Pipe connection: DN 40 Pressure rating: PN 6/10 Flange size for motor: 56C</p>
		<p>Electrical data:</p> <p>Motor type: 71A IE Efficiency class: IE5 Rated power - P2: 0.25 kW Mains frequency: 50 Hz Rated voltage: 1 x 200-240 V Rated current: 1.75-1.50 A Cos phi - power factor: 0.95 Rated speed: 360-4000 rpm Efficiency: 81.1% Motor efficiency at full load: 81.1 % Enclosure class (IEC 34-5): IP55 Insulation class (IEC 85): F</p>
		<p>Others:</p> <p>Minimum efficiency index, MEI : 0.7 Net weight: 23.4 kg Gross weight: 30.5 kg Shipping volume: 0.1 m³</p>

On request TPE2 40-80-N A-F-I-BUBE 50 Hz



TPE2 40-80-N, 1*230 V

eta [%]



Description	Value
-------------	-------

General information:

Product name: TPE2 40-80-N A-F-I-BUBE
 Product No: On request
 EAN number: On request

Technical:

Rated flow: 12.3 m³/h
 Rated head: 5.4 m
 Head max: 80 dm
 Actual impeller diameter: 74 mm
 Primary shaft seal: BUBE
 Curve tolerance: ISO9906:2012 3B
 Pump version: A
 Model: A

Materials:

Pump housing: Stainless steel
 DIN W.-Nr. 1.4308
 ASTM CF8

Impeller: Composite PES/PP 30% GF
 Material code: I

Installation:

Range of ambient temperature: -20 .. 50 °C
 Maximum operating pressure: 10 bar
 Flange standard: DIN
 Pipe connection: DN 40
 Pressure rating: PN 6/10
 Flange size for motor: 56C
 Connect code: F

Liquid:

Pumped liquid: Water
 Liquid temperature range: 0 .. 120 °C
 Liquid temperature during operation: 20 °C
 Density: 998.2 kg/m³

Electrical data:

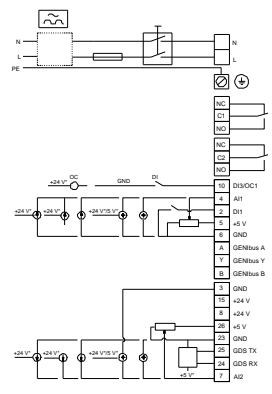
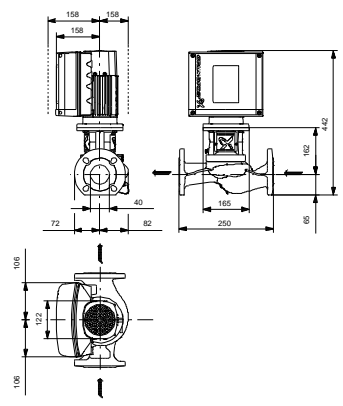
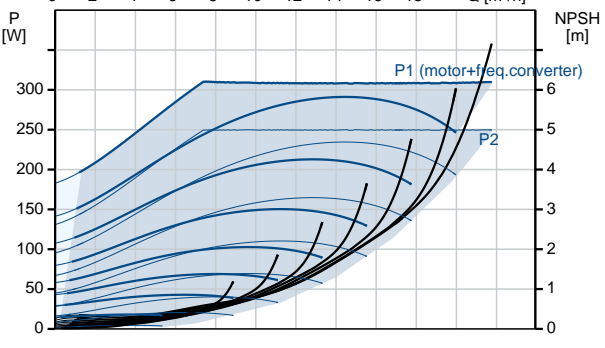
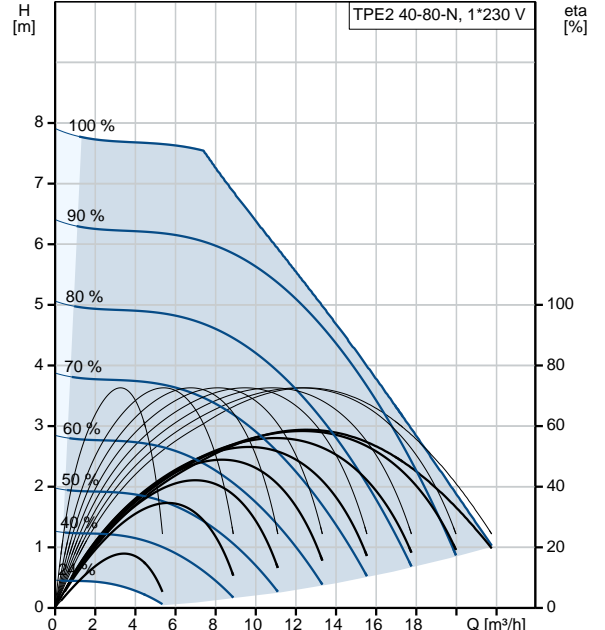
Motor type: 71A
 IE Efficiency class: IE5
 Rated power - P2: 0.25 kW
 Mains frequency: 50 Hz
 Rated voltage: 1 x 200-240 V
 Rated current: 1.75-1.50 A
 Cos phi - power factor: 0.95
 Rated speed: 360-4000 rpm
 Efficiency: 81.1%
 Motor efficiency at full load: 81.1 %
 Enclosure class (IEC 34-5): IP55
 Insulation class (IEC 85): F
 Motor protec: YES
 Motor No: 99137862

Controls:

Control panel: HMI200 - Standard
 Function Module: FM200 - Standard

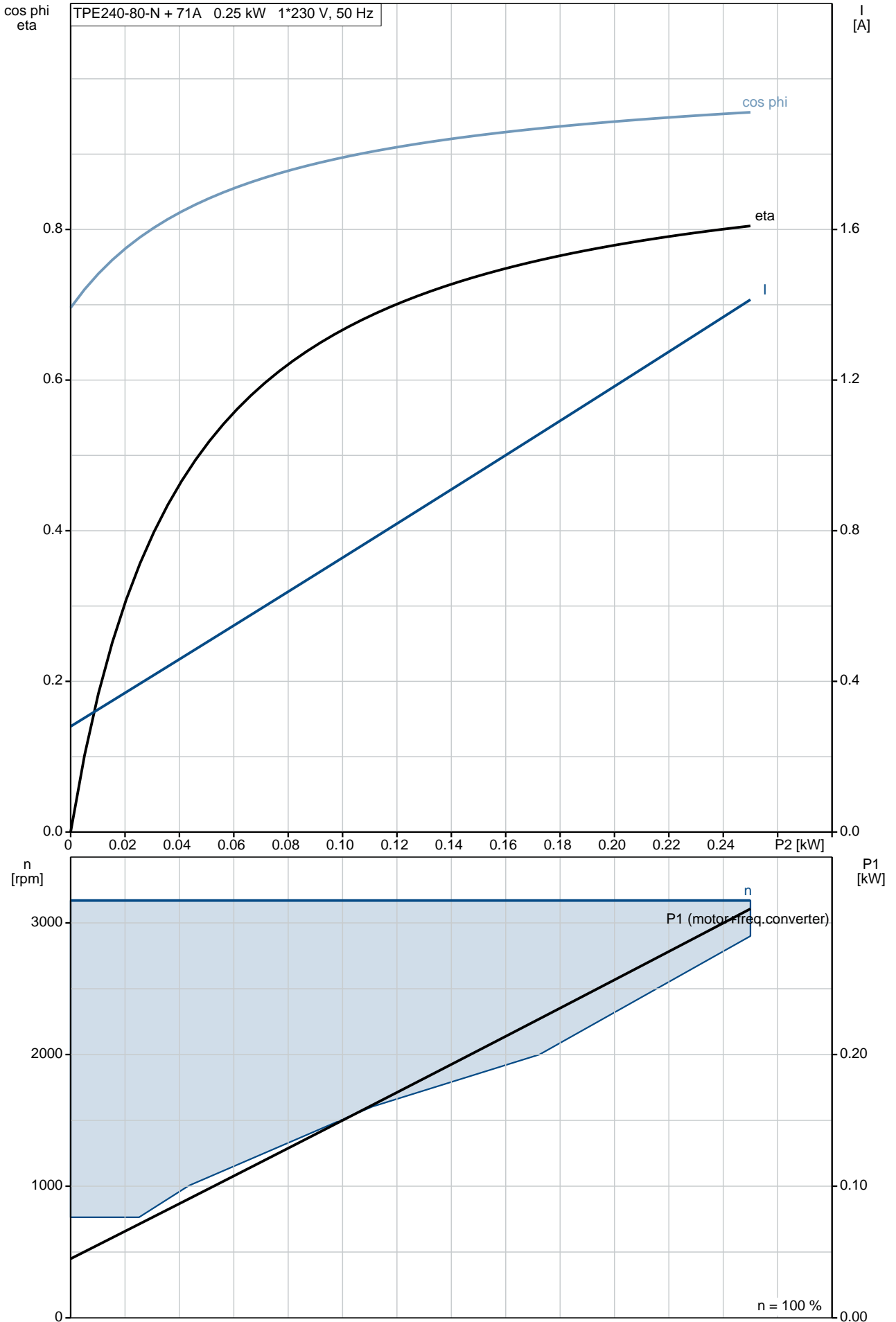
Others:

Minimum efficiency index, MEI : 0.7
 Net weight: 23.4 kg
 Gross weight: 30.5 kg
 Shipping volume: 0.1 m³
 Config. file no: 98819168

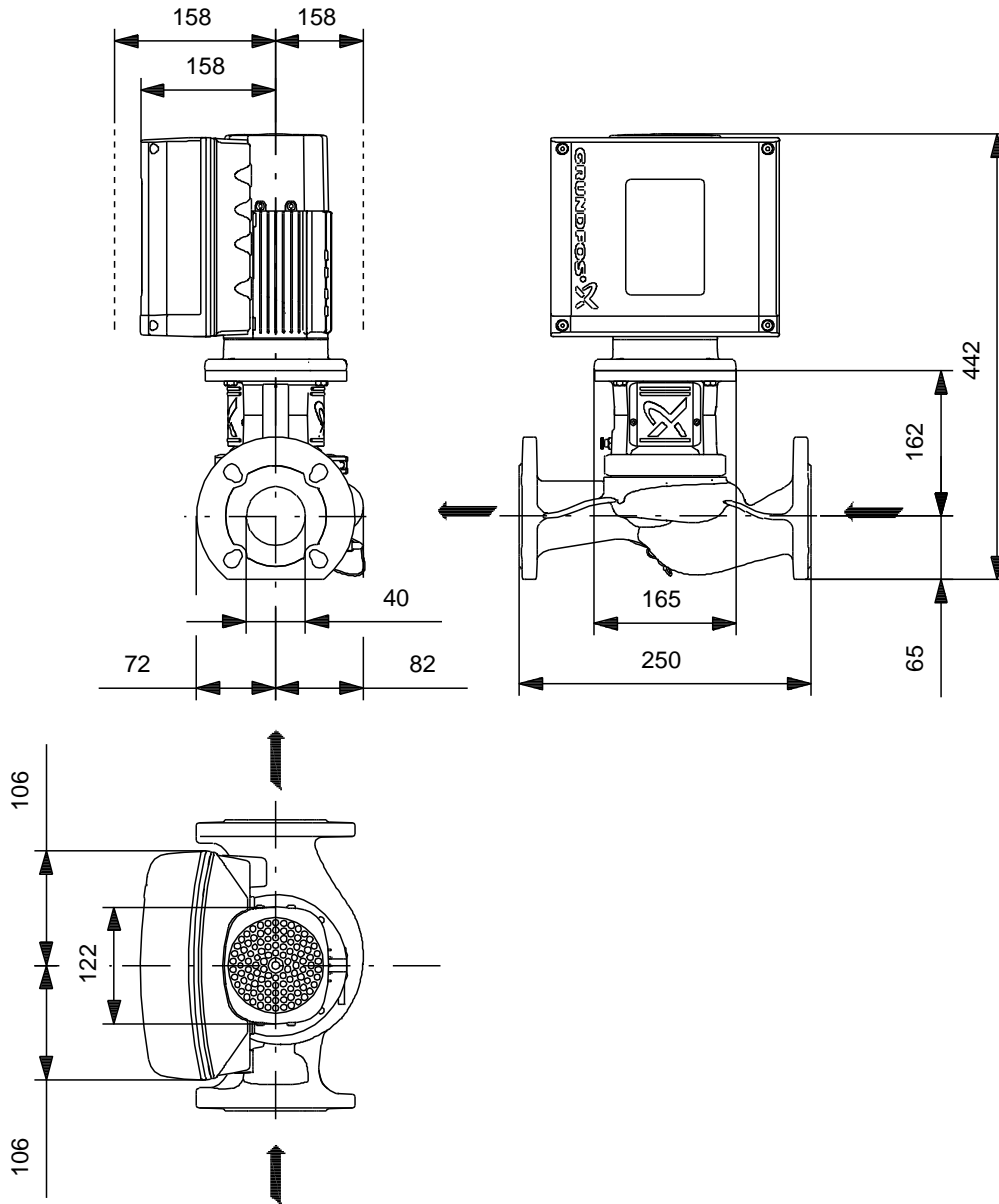


On request TPE2 40-80-N A-F-I-BUBE 50 Hz

TPE240-80-N + 71A 0.25 kW 1*230 V, 50 Hz

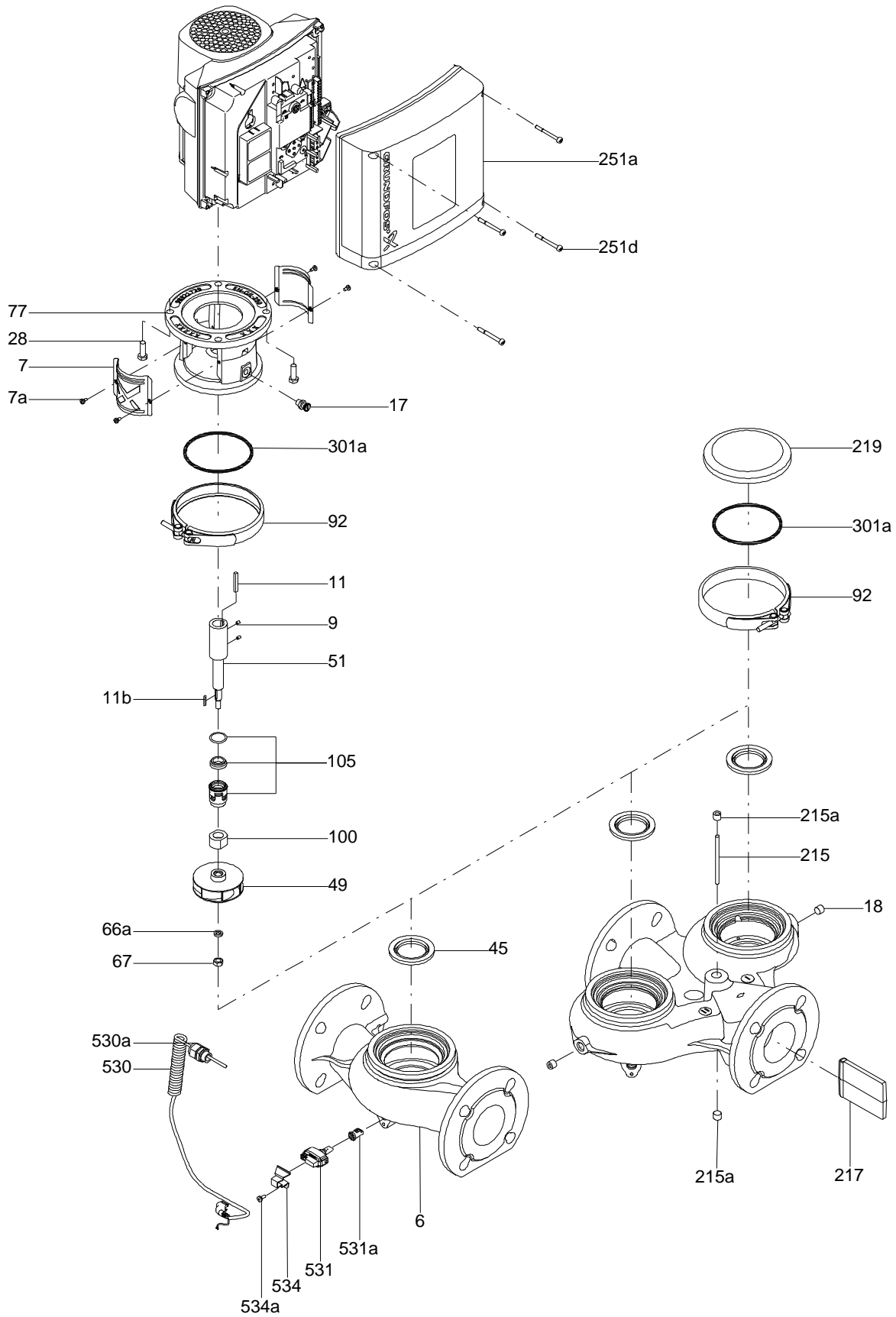


On request TPE2 40-80-N A-F-I-BUBE 50 Hz

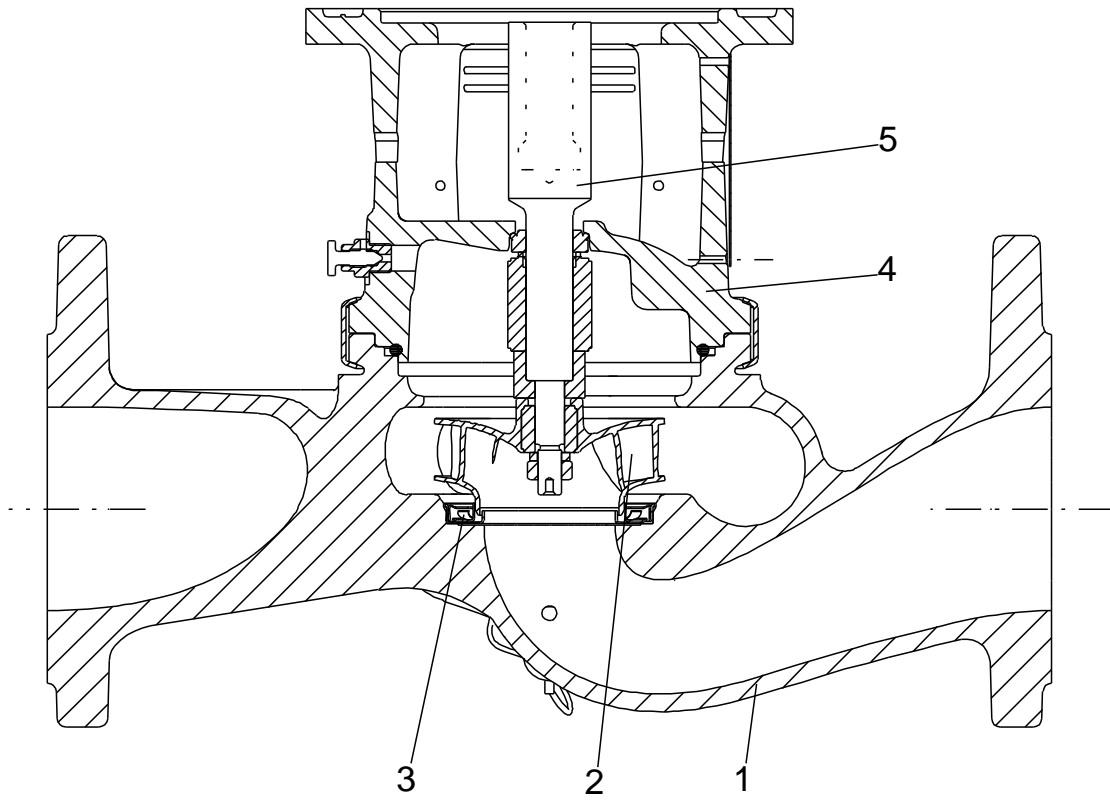


Note! All units are in [mm] unless others are stated.
Disclaimer: This simplified dimensional drawing does not show all details.

Exploded view

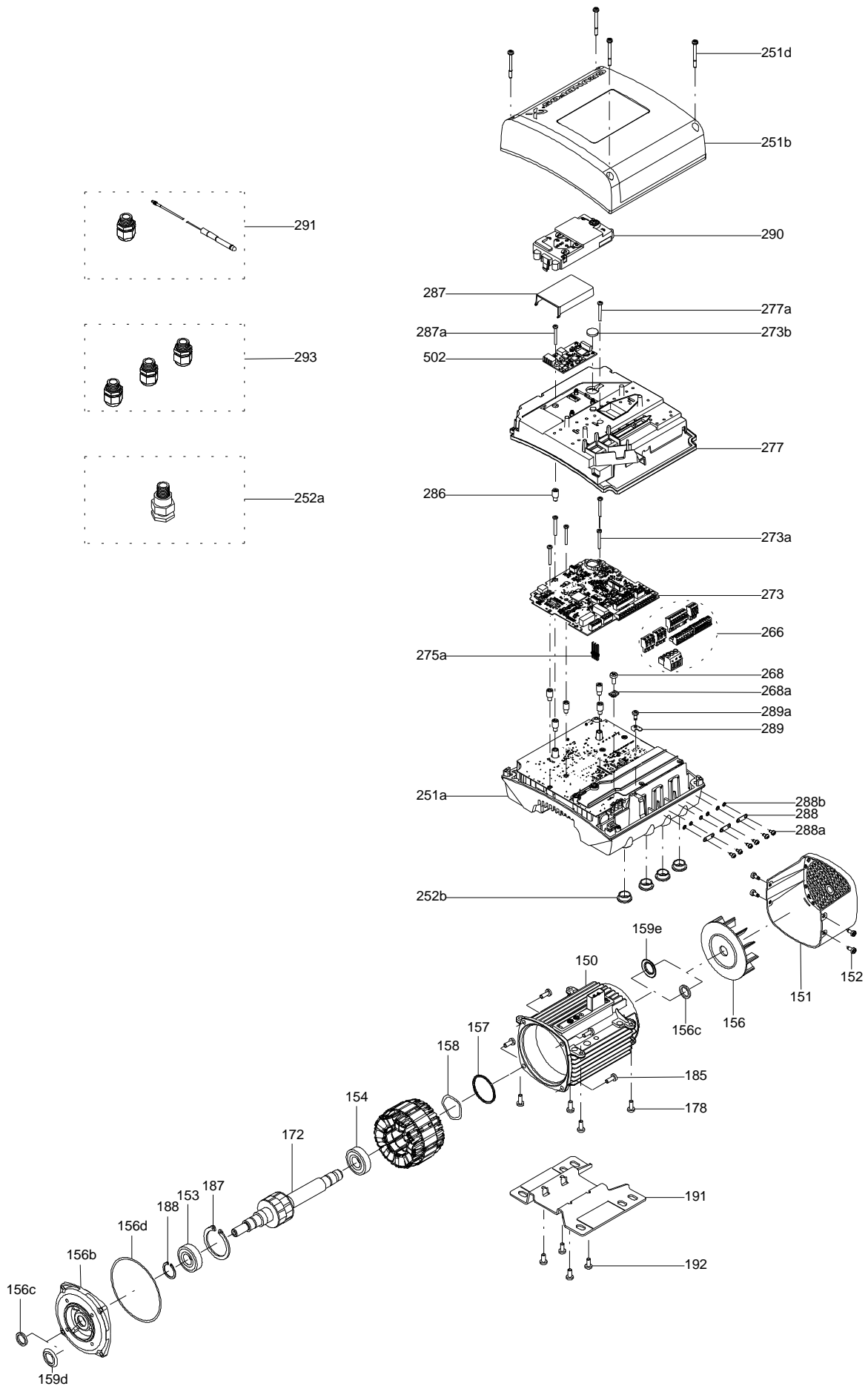


Sectional drawing (TM058200 for TPE2,TPE3)



TM058200

Exploded view (TM057026 for MGE model H/I)



Disclaimer: The information about the Grundfos pump in this document may be outdated.

Data may be subject to alterations without further notice.

Please contact us to verify the data above is still accurate/up-to-date.

All information is copyright Grundfos.



info@lenntech.com

<https://www.lenntech.com>

tel. +31 152 610 900

fax. +31 152 616 289