

TP 32-50/2-A-O-A-BUBE 1X230 50HZ

Grundfos pump 98346591




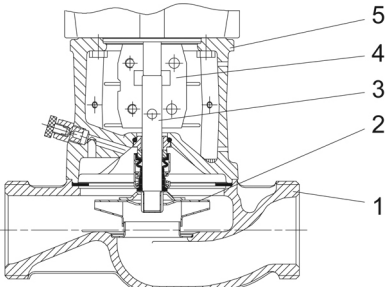
Thank you for your interest in our products. Please contact us for more information, or visit our website

<https://www.lenntech.com/grundfos/TP000/98346591/TP-32-50-2-A-O-A-BUBE.html>

info@lenntech.com

tel. +31 152 610 900

fax. +31 152 616 289

| Position | Qty. | Description |
|----------|------|--|
| | 1 | <p data-bbox="320 163 603 194">TP 32-50/2 A-O-A-BUBE</p>  <p data-bbox="320 488 600 519">Product No.: On request</p> <p data-bbox="320 546 1445 622">Single-stage, close-coupled, volute pump with in-line suction and discharge ports of identical diameter. The pump is of the top-pull-out design, i.e. the power head (motor, pump head and impeller) can be removed for maintenance or service while the pump housing remains in the pipework.</p> <p data-bbox="320 631 1422 685">The pump is fitted with an unbalanced rubber bellows seal. The shaft seal is according to EN 12756. Pipework connection is via PN 10 union connections (ISO 228-1).</p> <p data-bbox="320 689 951 721">The pump is fitted with a fan-cooled asynchronous motor.</p> <p data-bbox="320 748 639 779">Further product details</p> <p data-bbox="320 784 400 815">Pump</p> <p data-bbox="320 819 1257 851">Pump housing and pump head are electrocoated to improve the corrosion resistance.</p> <p data-bbox="320 855 584 887">Electrocoating includes:</p> <ol data-bbox="320 891 810 999" style="list-style-type: none"> 1) Alkaline-based cleaning. 2) Pretreatment with zinc phosphate coating. 3) Cathodic electrocoating (epoxy). 4) Curing of paint film at 200-250 °C.  <ol data-bbox="320 1330 507 1473" style="list-style-type: none"> 1: Pump housing 2: Impeller 3: Shaft 4: Coupling 5: Pump head <p data-bbox="320 1505 1461 1581">The pump housing is provided with a replaceable stainless steel/PTFE neck ring to reduce the amount of liquid running from the discharge side of the impeller to the suction side. The impeller is secured with a split cone pressed onto the shaft.</p> <p data-bbox="320 1621 1445 1697">The pump is fitted with an unbalanced rubber bellows seal with torque transmission across the spring and around the bellows. Due to the bellows, the seal does not wear the shaft, and the axial movement is not prevented by deposits on the shaft.</p> <p data-bbox="320 1711 464 1742">Primary seal:</p> <ul data-bbox="357 1742 1054 1796" style="list-style-type: none"> • Rotating seal ring material: tungsten carbide (WC) • Stationary seat material: carbon graphite, resin-impregnated <p data-bbox="320 1800 1430 1899">This is a widely used material pairing. If the pumped liquid contains particles, wear on the seal faces must be expected. Due to the favourable lubricating properties of carbon graphite, the seal is suitable for use even under poor lubricating conditions, such as hot water. However, under such conditions, wear on the carbon graphite face reduces seal life.</p> <p data-bbox="320 1912 1219 1966">Secondary seal material: EPDM (ethylene-propylene rubber) EPDM has excellent resistance to hot water. EPDM is not suitable for mineral oils.</p> <p data-bbox="320 2002 1445 2056">A circulation of liquid through the duct of the air vent screw ensures lubrication and cooling of the shaft seal.</p> |

The motor stool forms connection between the pump housing and the motor, and is equipped with a manual air vent screw for venting of the pump housing and the shaft seal chamber. The sealing between motor stool and pump housing is an O-ring or a flat gasket.

The central part of the motor stool is provided with guards for protection against the shaft and coupling. Motor and pump shaft are connected via a shell coupling.

Motor

The motor is a totally enclosed, fan-cooled motor with principal dimensions to IEC and DIN standards. Electrical tolerances comply with IEC 60034.

The motor is flange-mounted with tapped-hole flange (FT).

Motor-mounting designation in accordance with IEC 60034-7: IM B 14, IM V 18 (Code I) / IM 3601, IM 3611 (Code II).

The motor has built-in thermal protection (PTO current and temperature sensors) in accordance with IEC 60034-11 and requires no further motor protection. The protection reacts to both slow- and quick-rising temperatures, e.g. constant overload and stalled conditions.

As the thermal protection incorporates automatic reset, the motor must be connected in a way which ensures that the automatic reset cannot cause accidents.

Technical data

Liquid:

Pumped liquid: Water
Liquid temperature range: 0 .. 110 °C
Liquid temperature during operation: 20 °C
Density: 998.2 kg/m³

Technical:

Rated flow: 4.91 m³/h
Rated head: 3.29 m
Actual impeller diameter: 68 mm
Primary shaft seal: BUBE
Curve tolerance: ISO9906:2012 3B

Materials:

Pump housing: Cast iron
EN-JL1020
ASTM A48-25B
Impeller: Composite PES/PP 30% GF

Installation:

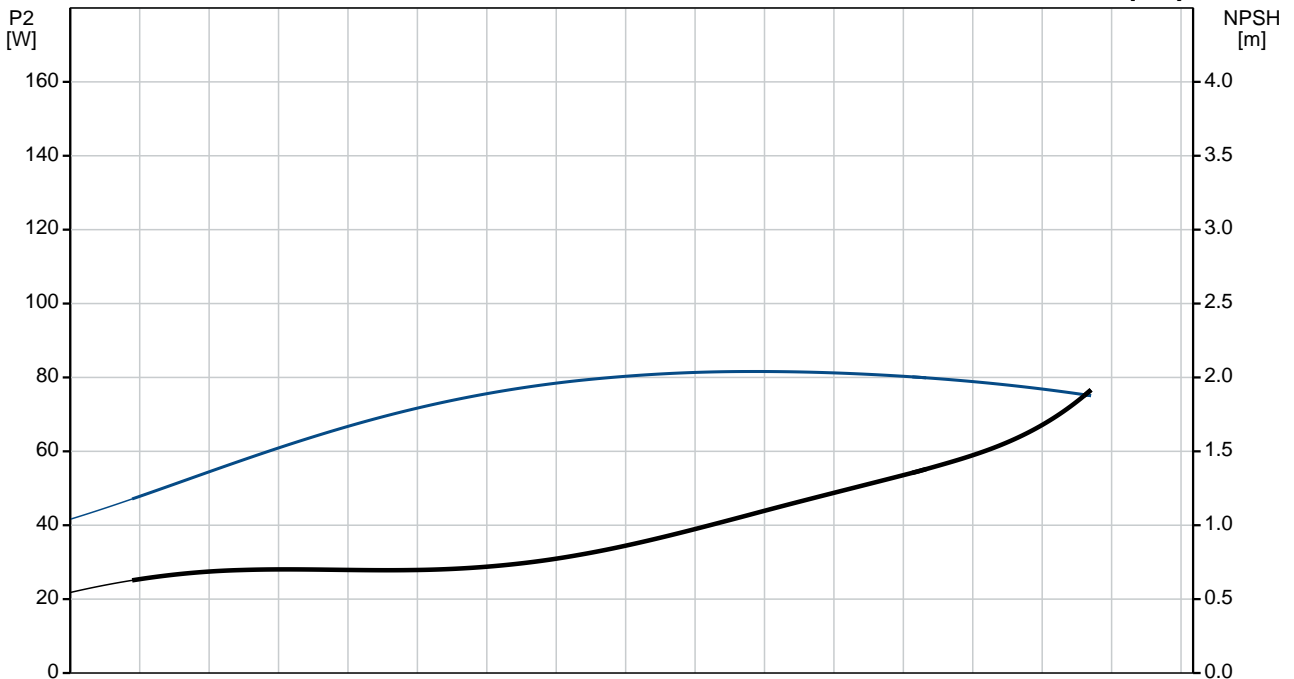
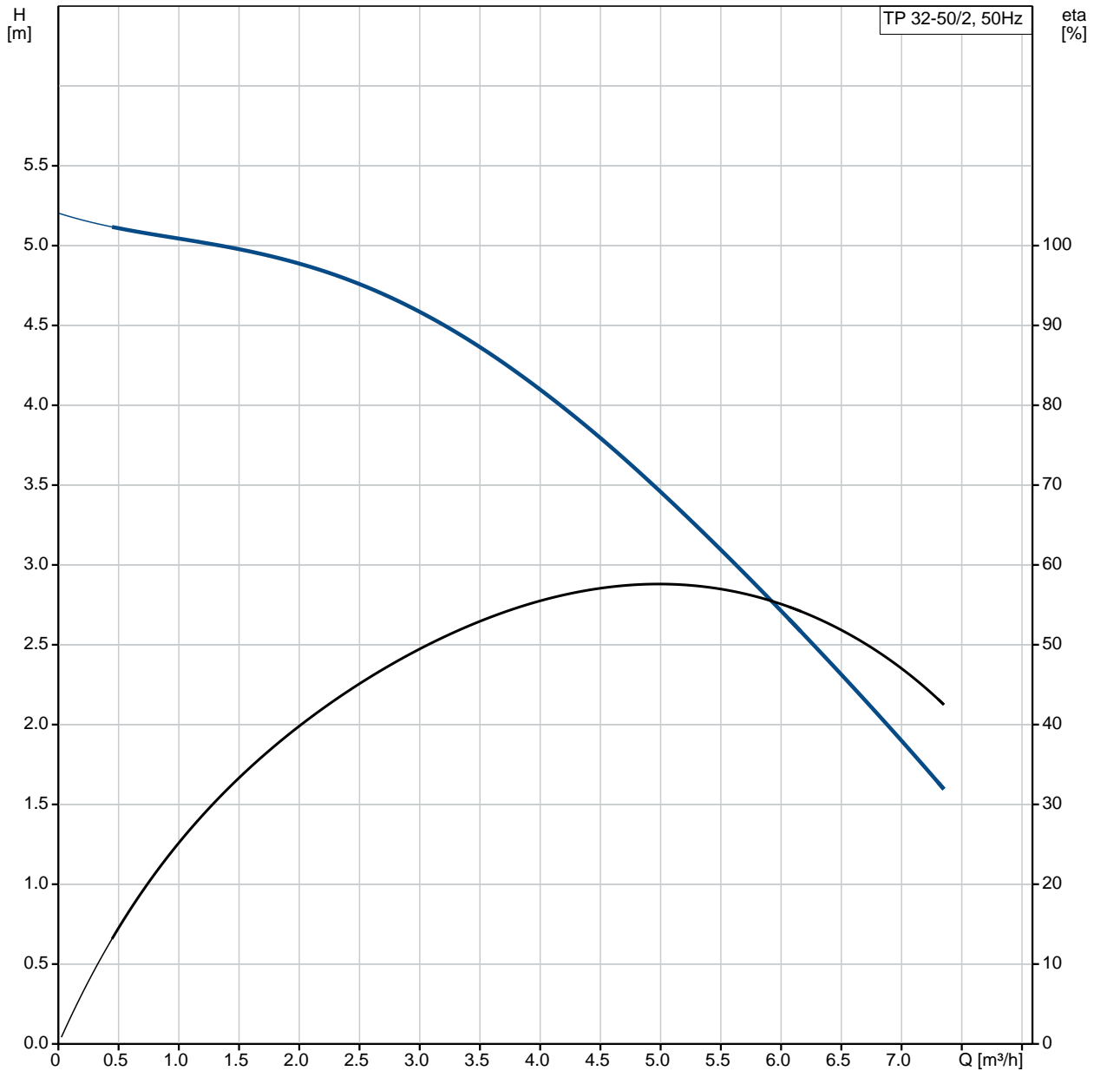
Range of ambient temperature: -30 .. 40 °C
Maximum operating pressure: 10 bar
Flange standard: UNION
Pipe connection: G 2
Pressure rating: PN 10
(@): 180 mm
Flange size for motor: FT75

Electrical data:

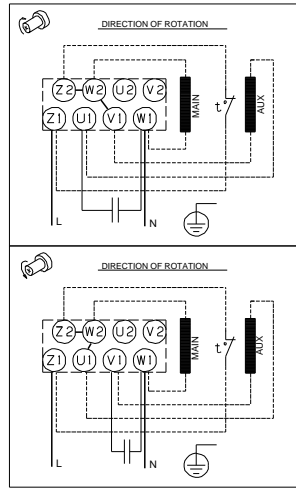
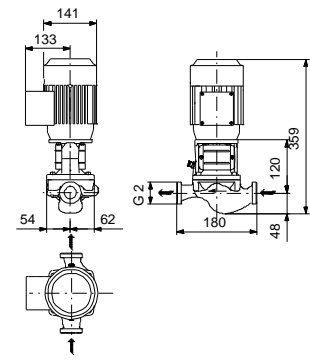
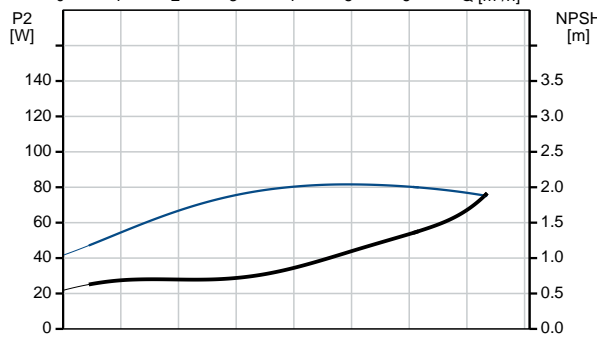
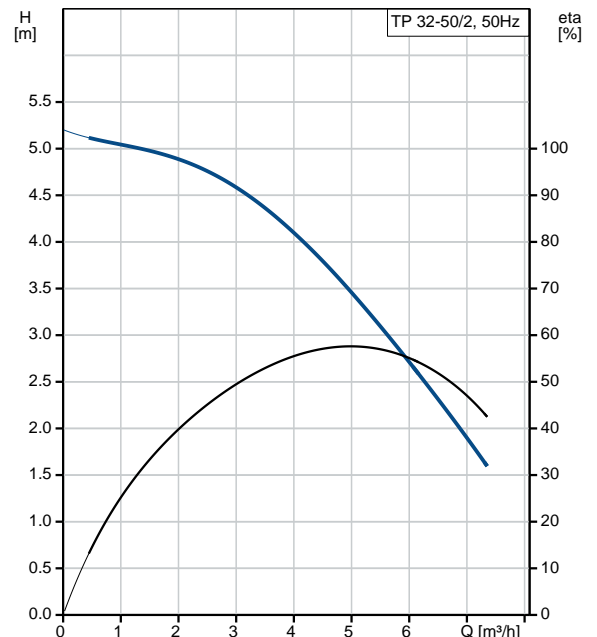
Motor type: 71A
Rated power - P2: 0.12 kW
Power (P2) required by pump: 0.12 kW
Mains frequency: 50 Hz
Rated voltage: 1 x 220-240 V
Rated current: 1.36-1.57 A
Starting current: 400-370 %
Cos phi - power factor: 0.77
Rated speed: 2815-2835 rpm
Motor efficiency at full load: 52.3-53.2 %
Number of poles: 2
Enclosure class (IEC 34-5): 55 Dust/Jetting
Insulation class (IEC 85): F

| Position | Qty. | Description |
|----------|------|--|
| | | <p>Others: Minimum efficiency index, MEI : --.- ErP status: EuP Standalone/Prod. Net weight: 9.42 kg Gross weight: 11.7 kg Shipping volume: 0.04 m³</p> |

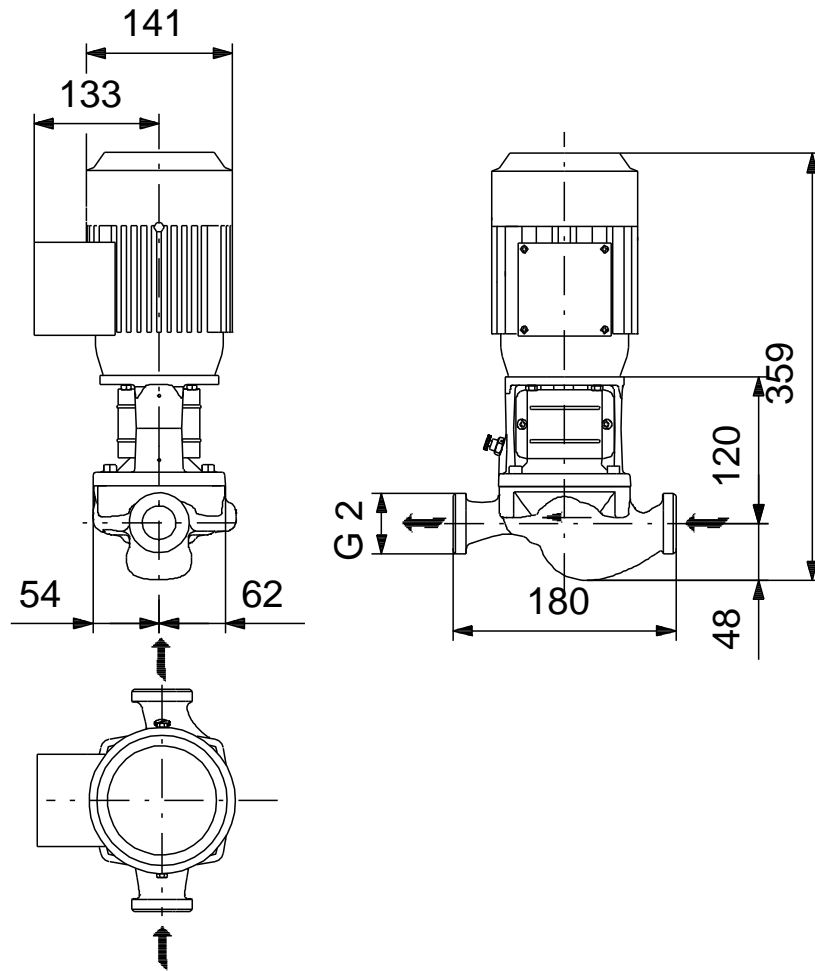
On request TP 32-50/2 A-O-A-BUBE 50 Hz



| Description | Value |
|--------------------------------------|--|
| General information: | |
| Product name: | TP 32-50/2 A-O-A-BUBE |
| Product No: | On request |
| EAN number: | On request |
| Technical: | |
| Rated flow: | 4.91 m ³ /h |
| Rated head: | 3.29 m |
| Head max: | 50 dm |
| Actual impeller diameter: | 68 mm |
| Primary shaft seal: | BUBE |
| Curve tolerance: | ISO9906:2012 3B |
| Pump version: | A |
| Model: | B |
| Materials: | |
| Pump housing: | Cast iron EN-JL1020 ASTM A48-25B |
| Impeller: | Composite PES/PP 30% GF |
| Material code: | A |
| Installation: | |
| Range of ambient temperature: | -30 .. 40 °C |
| Maximum operating pressure: | 10 bar |
| Flange standard: | UNION |
| Pipe connection: | G 2 |
| Pressure rating: | PN 10 |
| (@) | 180 mm |
| Flange size for motor: | FT75 |
| Connect code: | O |
| Liquid: | |
| Pumped liquid: | Water |
| Liquid temperature range: | 0 .. 110 °C |
| Liquid temperature during operation: | 20 °C |
| Density: | 998.2 kg/m ³ |
| Electrical data: | |
| Motor type: | 71A |
| Rated power - P2: | 0.12 kW |
| Power (P2) required by pump: | 0.12 kW |
| Mains frequency: | 50 Hz |
| Rated voltage: | 1 x 220-240 V |
| Rated current: | 1.36-1.57 A |
| Starting current: | 400-370 % |
| Cos phi - power factor: | 0.77 |
| Rated speed: | 2815-2835 rpm |
| Motor efficiency at full load: | 52.3-53.2 % |
| Number of poles: | 2 |
| Enclosure class (IEC 34-5): | 55 Dust/Jetting |
| Insulation class (IEC 85): | F |
| Motor protec: | PTO |
| Motor No: | 98714251 |
| Others: | |
| Minimum efficiency index, MEI : | -- |
| ErP status: | EuP Standalone/Prod. |
| Net weight: | 9.42 kg |
| Gross weight: | 11.7 kg |
| Shipping volume: | 0.04 m ³ |

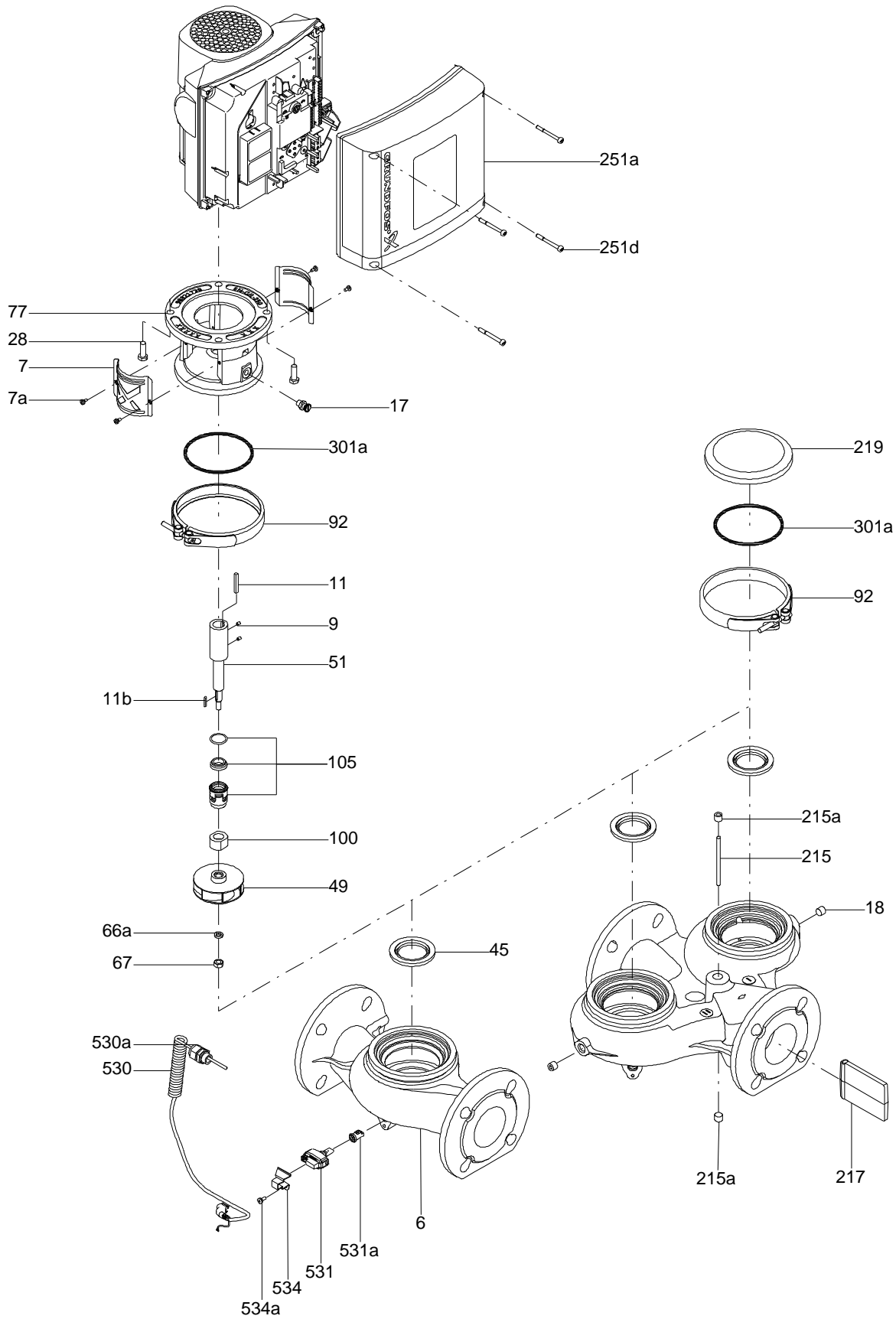


On request TP 32-50/2 A-O-A-BUBE 50 Hz



Note! All units are in [mm] unless others are stated.
Disclaimer: This simplified dimensional drawing does not show all details.

Exploded view

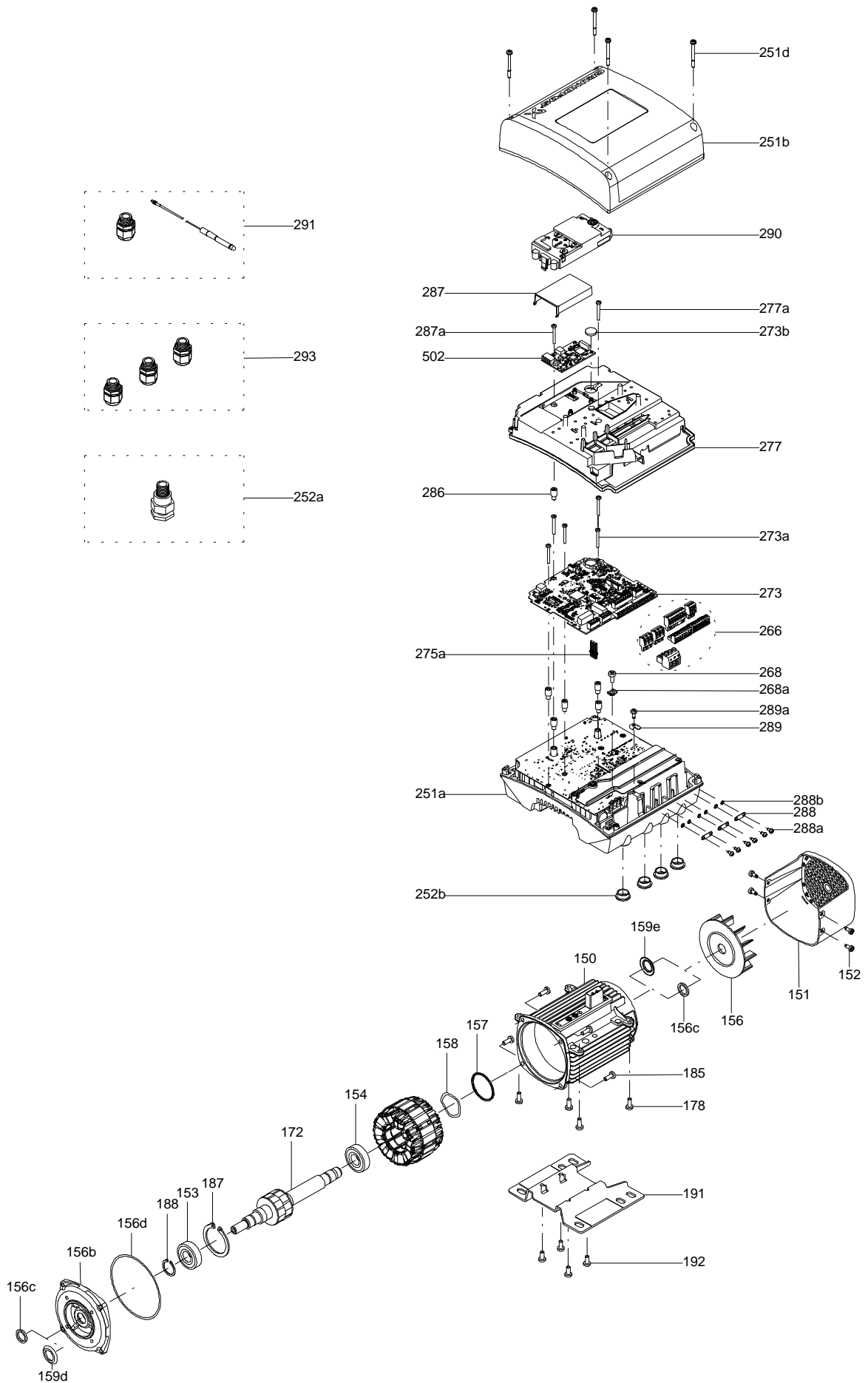


Sectional drawing (TM058200 for TPE2,TPE3)



TM058200

Exploded view (TM057026 for MGE model H/I)



Parts list TP 32-50/2, Product No. On request
Valid from 20.6.2010 (1024)

| Pos | Description | Annotation | Données de classification | Référence | Quantité | Unité |
|-----|---------------------------|------------|--|-----------|----------|-------|
| | Motor | | | | 1 | pcs |
| - | Coupling cpl. | | | | 1 | pcs |
| 9 | Hex socket head cap screw | | Designation: DIN 912 Length (mm): 20 Thread: M6 | | 4 | |
| 10 | Shaft pin | | Diameter: 5 Length (mm): 21,5 | | 1 | |
| 10a | Coupling half | | | | 2 | |
| - | Motor stool cpl. | | | | 1 | pcs |
| 2 | Motor stool | | | | 1 | |
| 26 | Hex socket head cap screw | | Designation: DIN 912 Length (mm): 20 Thread: M6 | | 4 | |
| 28 | Hex head screw | | Length (mm): 16 MM Thread: M5 | | 4 | |
| - | Pump housing cpl. | | | | 1 | pcs |
| - 6 | Pump housing cpl. | | | | 1 | |
| - | Pump housing | | | | 1 | |
| 6 | Pump housing | | | | | |
| 45 | Seal ring | | | | | |
| - | Coupling guard cpl. | | | | 1 | pcs |
| 7 | Coupling guard | | | | 2 | |
| 7a | Pan head screw | | | | 4 | |
| 66 | Lock washer | | | | 4 | |
| - | Shaft w/impeller cpl. | | | | 1 | pcs |
| - | Shaft w/impeller cpl. | | | | 1 | |
| 49 | Impeller cpl. | | | | 1 | |
| 49b | Split cone | | | | 1 | |
| 51 | Pump shaft | | | | 1 | |
| 66a | Washer | | Designation: DIN 125 A2 Internal diameter: 13 Outer diameter: 24 Thickness: 2,5 | | 1 | |
| 17 | Air vent screw | | | | 1 | pcs |
| 72a | Gasket | | Internal diameter: 97 MM Outer diameter: 77.5 Thickness: 2 MM | | 1 | pcs |
| 105 | Shaft seal | | Material type: BUBE | | 1 | pcs |

Disclaimer: The information about the Grundfos pump in this document may be outdated.

Data may be subject to alterations without further notice.

Please contact us to verify the data above is still accurate/up-to-date.

All information is copyright Grundfos.



info@lenntech.com

<https://www.lenntech.com>

tel. +31 152 610 900

fax. +31 152 616 289