

## MAGNA3 32-80 F N 220 1x230V PN6/10 Grundfos pump 98333876




Thank you for your interest in our products. Please contact us for more information, or visit our website

<https://www.lenntech.com/grundfos/MAGNA3N/98333876/MAGNA3-32-80-F-N.html>

[info@lenntech.com](mailto:info@lenntech.com)

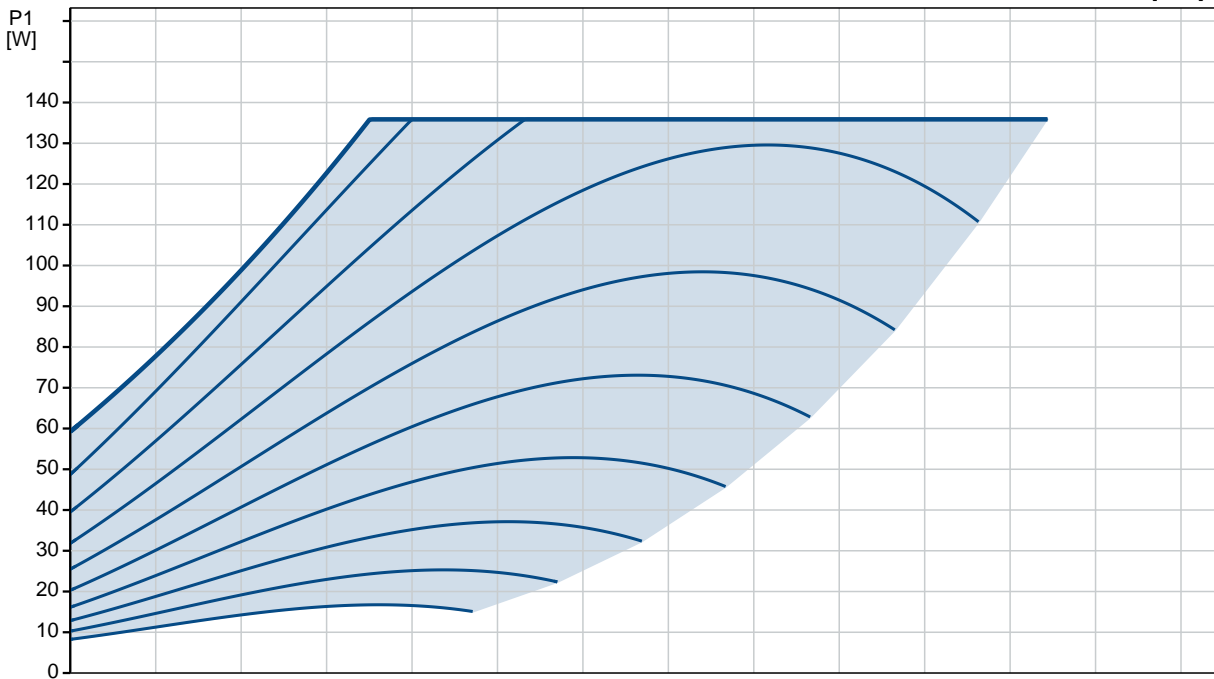
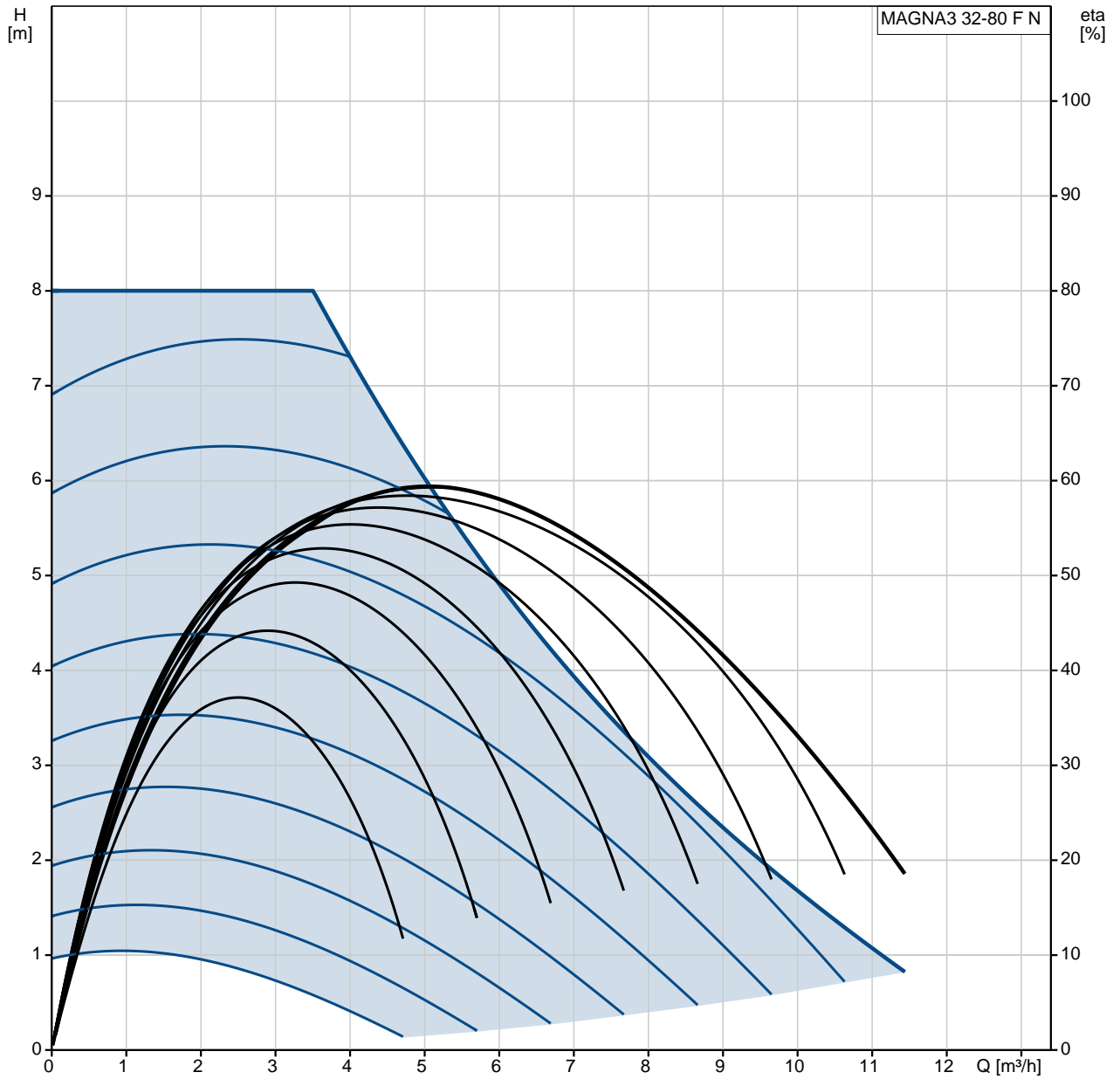
tel. +31 152 610 900

fax. +31 152 616 289

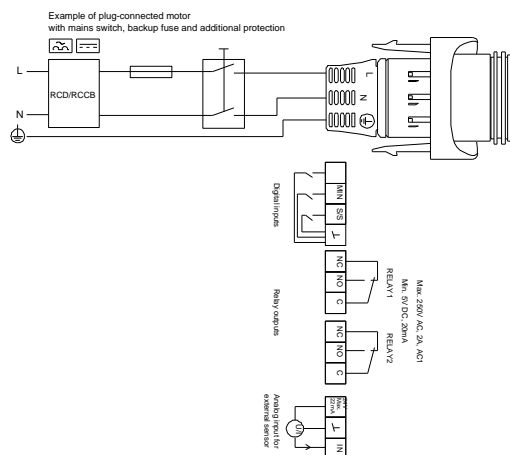
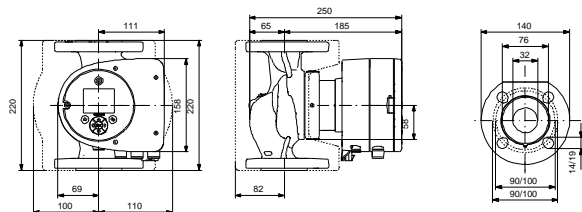
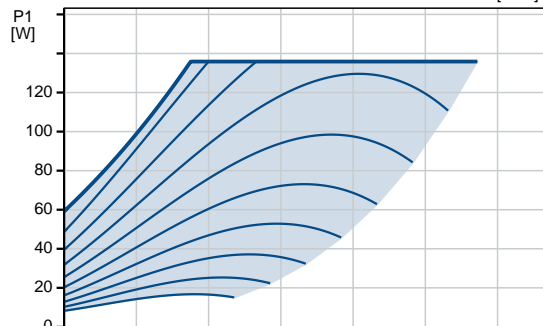
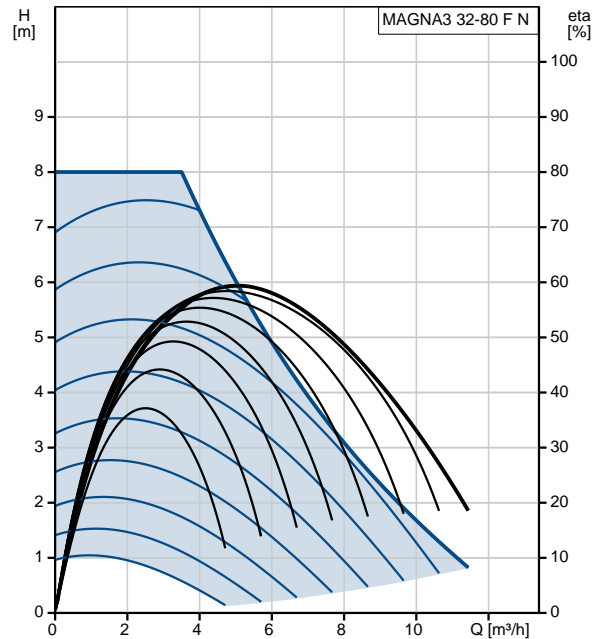
Position	Qty.	Description
	1	<p data-bbox="320 163 544 192"><b>MAGNA3 32-80 F N</b></p>  <p data-bbox="320 483 600 512">Product No.: On request</p> <p data-bbox="320 544 1436 618">With its unrivalled efficiency, all-encompassing range and built-in communication capabilities, the MAGNA3 is ideal for engineers and specifiers looking to create high-performance heating and cooling systems.</p> <p data-bbox="320 629 1114 658">MAGNA3 is the ideal choice for almost any building project – old or new.</p> <p data-bbox="320 660 1436 712">The pump is of the canned-rotor type, which means that pump and motor form an integral unit without shaft seal and with only two gaskets for sealing. The bearings are lubricated by the pumped liquid.</p> <p data-bbox="320 716 1394 745">The MAGNA3 is a pump with no maintenance requirements and with extremely low life cycle cost.</p> <p data-bbox="320 777 635 806"><b>Characteristic features</b></p> <ul data-bbox="357 813 1362 1227" style="list-style-type: none"> <li>• AUTOADAPT</li> <li>• FLOWADAPT and FLOWLIMIT (reduces the need for pump throttling valves)</li> <li>• Proportional-pressure control</li> <li>• Constant-pressure control</li> <li>• Constant-temperature control</li> <li>• Differential temperature control (requires an additional temperature sensor)</li> <li>• Constant-curve duty</li> <li>• Maximum and minimum curve duty</li> <li>• Automatic night setback</li> <li>• Heat energy monitor</li> <li>• No external motor protection required</li> <li>• Innovative clamp ring with only one screw enabling easy repositioning of the pump head</li> <li>• Insulating shells supplied with single-head pumps for heating systems</li> <li>• Large temperature range due to air cooled electronics</li> </ul> <p data-bbox="320 1258 539 1288"><b>Communication</b></p> <ul data-bbox="357 1294 1053 1440" style="list-style-type: none"> <li>• Wireless communication with the Grundfos GO Remote app</li> <li>• Fieldbus communication via CIM modules</li> <li>• Digital inputs</li> <li>• Relay outputs</li> <li>• Analog input</li> </ul> <p data-bbox="320 1471 531 1500"><b>Product details</b></p> <p data-bbox="320 1507 1118 1536">The MAGNA3 is a single-phase pump and characterised by the following</p> <ul data-bbox="357 1541 1121 1800" style="list-style-type: none"> <li>• Controller integrated in the control box</li> <li>• Control panel with TFT display on the control box</li> <li>• Control box prepared for optional CIM modules</li> <li>• Built-in differential-pressure and temperature sensor</li> <li>• Cast-iron pump housing (also available in stainless steel versions)</li> <li>• Carbon-fibre-reinforced composite rotor can</li> <li>• Stainless-steel bearing plate and rotor cladding</li> <li>• Aluminium alloy stator housing</li> <li>• Air-cooled power electronics</li> </ul> <p data-bbox="320 1832 748 1861"><b>Motor and electronic controller</b></p> <p data-bbox="320 1868 1420 1919">The MAGNA3 incorporates a 4-pole synchronous, permanent-magnet motor (PM motor). This motor type is characterised by higher efficiency than a conventional asynchronous squirrel-cage motor.</p> <p data-bbox="320 1924 1062 1953">The pump speed is controlled by an integrated frequency converter.</p> <p data-bbox="320 1984 405 2013"><b>Liquid:</b></p> <p data-bbox="320 2018 751 2047">Pumped liquid: Water</p> <p data-bbox="320 2051 823 2080">Liquid temperature range: -10 .. 110 °C</p> <p data-bbox="320 2085 804 2114">Liquid temperature during operation: 60 °C</p>



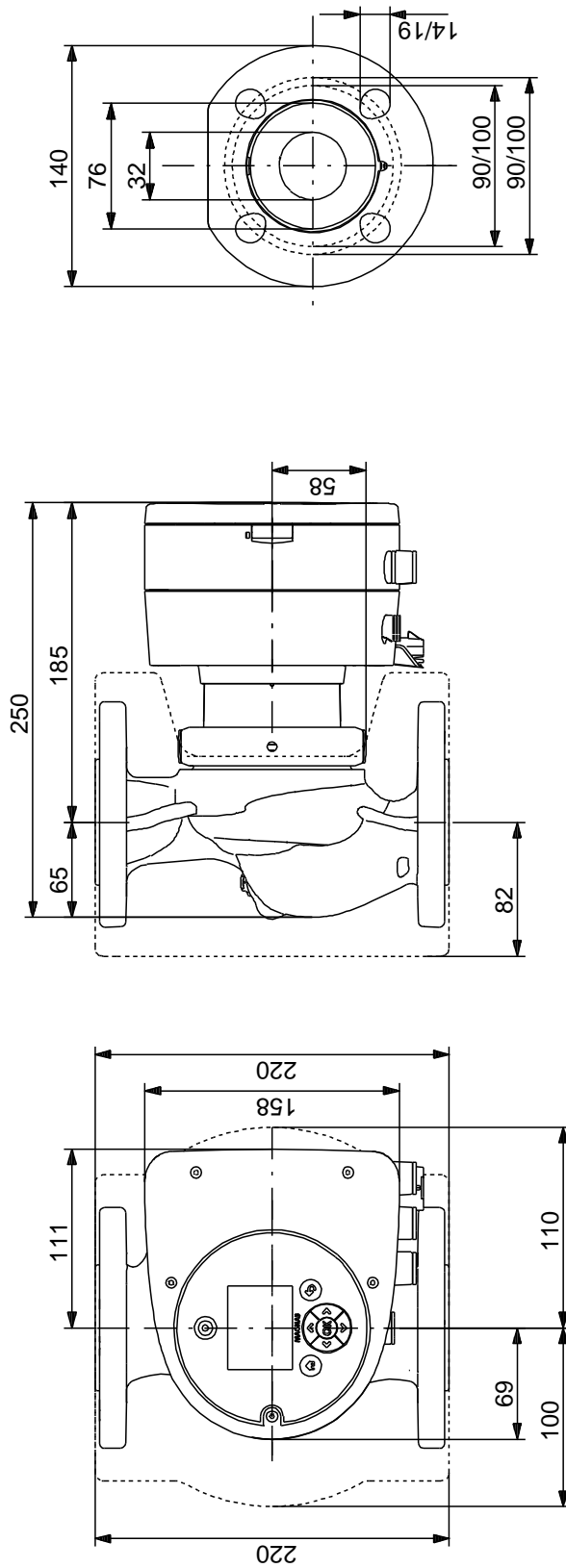
# On request MAGNA3 32-80 F N 50 Hz



Description	Value
<b>General information:</b>	
Product name:	MAGNA3 32-80 F N
Product No:	On request
EAN number:	On request
<b>Technical:</b>	
Rated flow:	5.6 m <sup>3</sup> /h
Rated head:	4.6 m
Head max:	80 dm
TF class:	110
Approvals on nameplate:	CE, VDE, EAC, CN ROHS, WEEE D
Model:	
<b>Materials:</b>	
Pump housing:	Stainless steel EN 1.4308 ASTM 351 CF8
Impeller:	PES 30%GF
<b>Installation:</b>	
Range of ambient temperature:	0 .. 40 °C
Maximum operating pressure:	10 bar
Flange standard:	DIN
Pipe connection:	DN 32
Pressure rating:	PN6/10
(@)	220 mm
<b>Liquid:</b>	
Pumped liquid:	Water
Liquid temperature range:	-10 .. 110 °C
Liquid temperature during operation:	60 °C
Density:	983.2 kg/m <sup>3</sup>
<b>Electrical data:</b>	
Power input - P1:	9 .. 136 W
Mains frequency:	50 Hz
Rated voltage:	1 x 230 V
Maximum current consumption:	0.09 .. 1.19 A
Enclosure class (IEC 34-5):	X4D
Insulation class (IEC 85):	F
<b>Others:</b>	
Energy (EEI):	0.18
Net weight:	7.79 kg
Gross weight:	8.32 kg
Shipping volume:	0.016 m <sup>3</sup>
Danish VVS No.:	380796081
Swedish RSK No.:	5803248

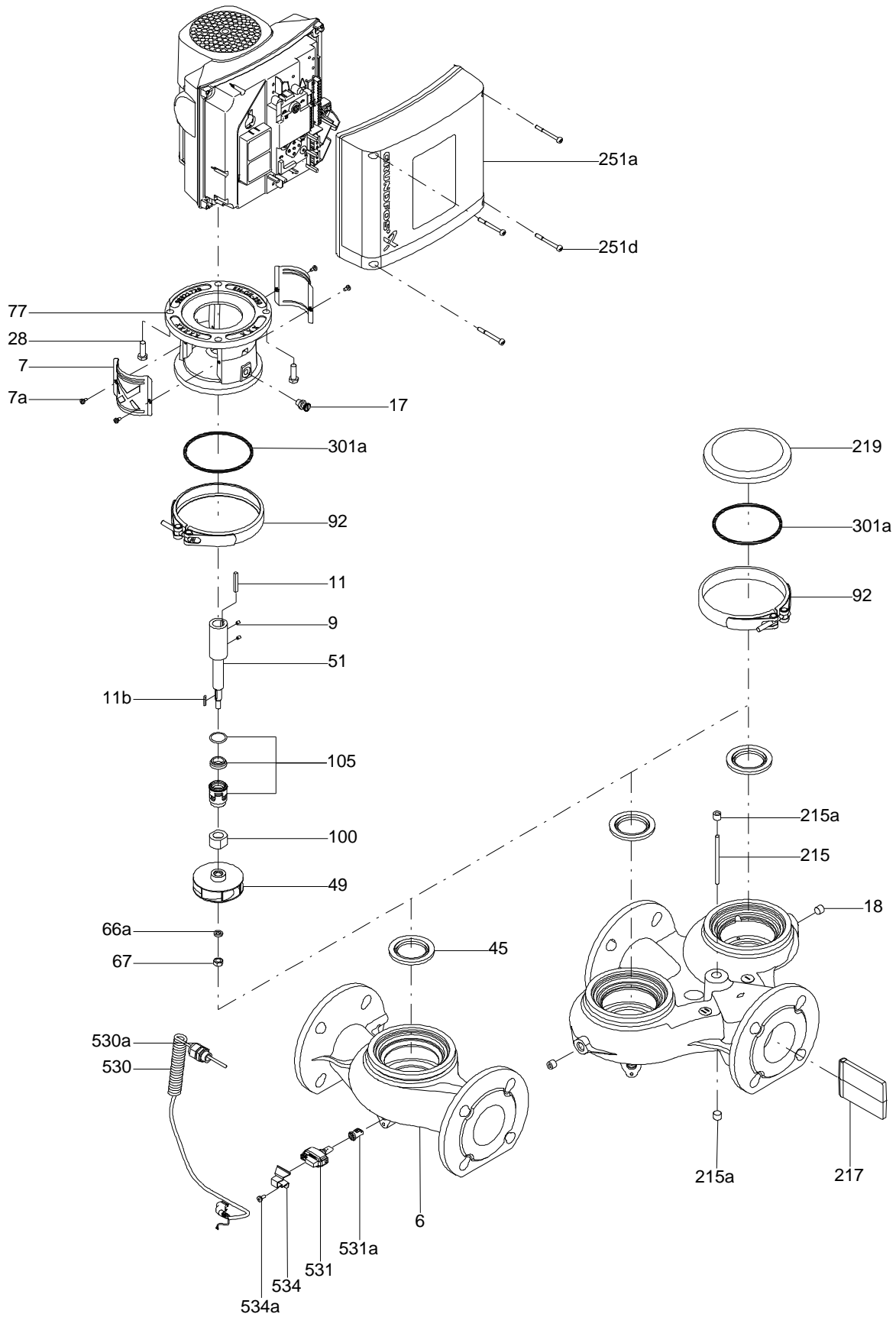


# On request MAGNA3 32-80 F N 50 Hz

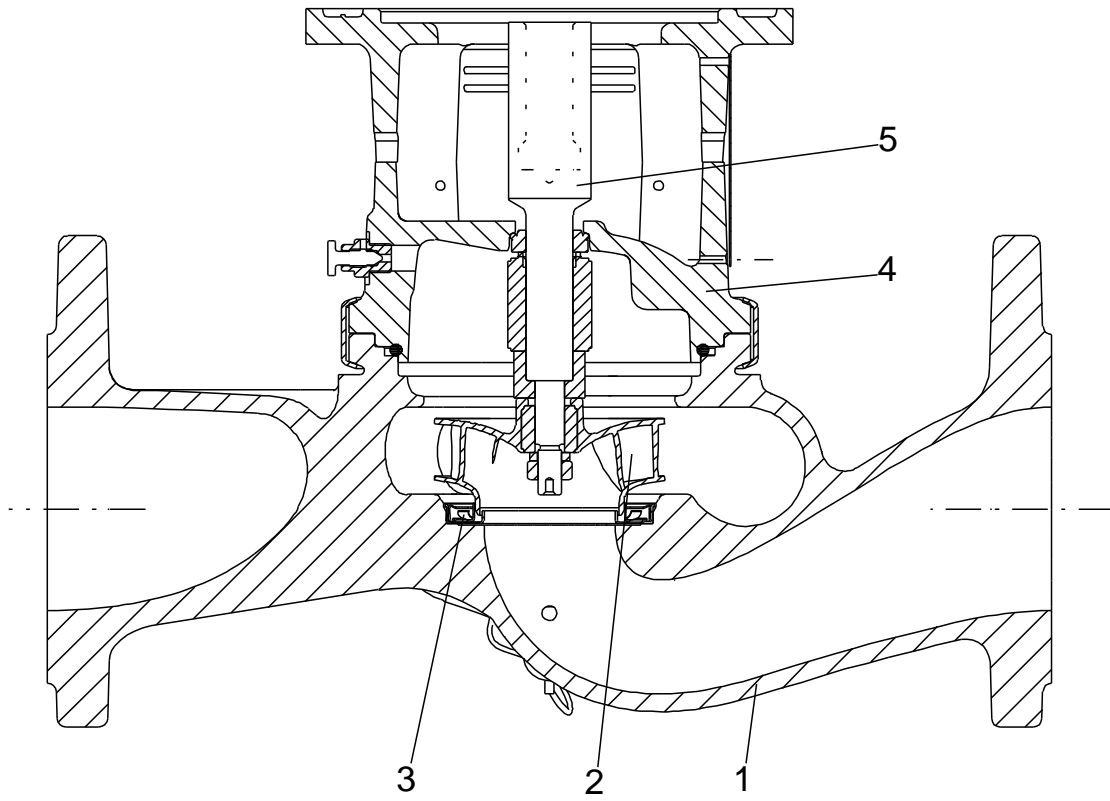


Note! All units are in [mm] unless others are stated.  
Disclaimer: This simplified dimensional drawing does not show all details.

Exploded view



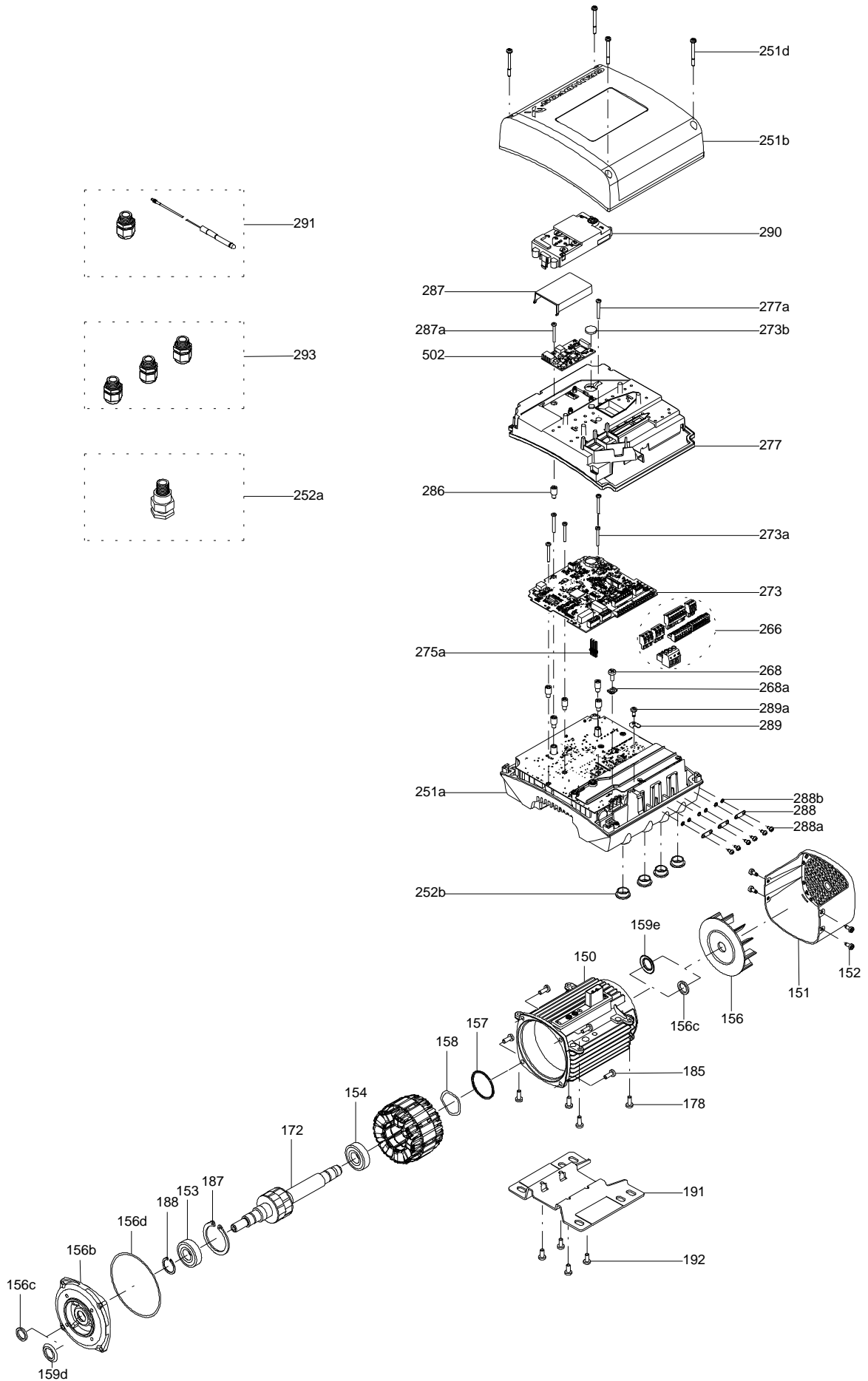
Sectional drawing (TM058200 for TPE2,TPE3)



TM058200



Exploded view ( TM057026 for MGE model H/I )



**Parts list MAGNA3 32-80 F N, Product No. On request**  
**Valid from 3.6.2013 (1323)**

Pos	Description	Annotation	Données de classification	Référence	Quantité	Unité
-	Pump housing cpl.				1	pcs
6	Pump housing				1	
45	Neck ring				1	
-	Control box cpl.				1	pcs
	Screw w/washer				2	
1.a	Screw DELTA PT				5	
162	Controlboard cpl.				1	
163	Bottom				1	
163f	Screw DELTA PT				2	
+ 164	Box				1	
164a	Screw DELTA PT				4	
	Conf.				1	pcs
92	Clamp cpl.				1	pcs
163e	Fastening pin				1	pcs
- 301	Pump head				1	pcs
301a	O-ring				1	
301c	Leaf spring				1	pcs
301d	Pan head screw				2	pcs
450	Insulation shell				1	pcs
- 531	Sensor				1	pcs
531a	Seal cap				1	
534	Bracket				1	pcs
534a	Pan head thread forming screw				1	pcs

*Disclaimer: The information about the Grundfos pump in this document may be outdated.*

*Data may be subject to alterations without further notice.*

*Please contact us to verify the data above is still accurate/up-to-date.*

All information is copyright Grundfos.



[info@lenntech.com](mailto:info@lenntech.com)

<https://www.lenntech.com>

tel. +31 152 610 900

fax. +31 152 616 289