

## MAGNA1 25-40 180 1x230V PN10 Grundfos pump 97924153




Thank you for your interest in our products. Please contact us for more information, or visit our website

<https://www.lenntech.com/grundfos/MAGNA1/97924153/MAGNA1-25-40.html>

[info@lenntech.com](mailto:info@lenntech.com)

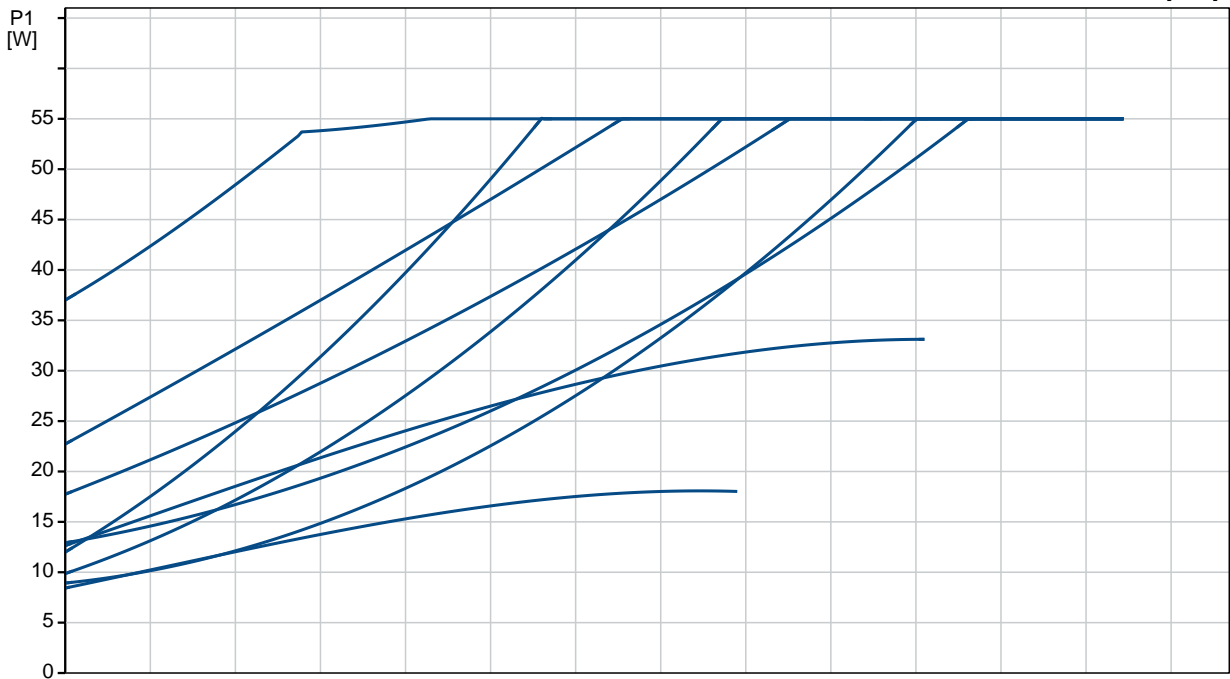
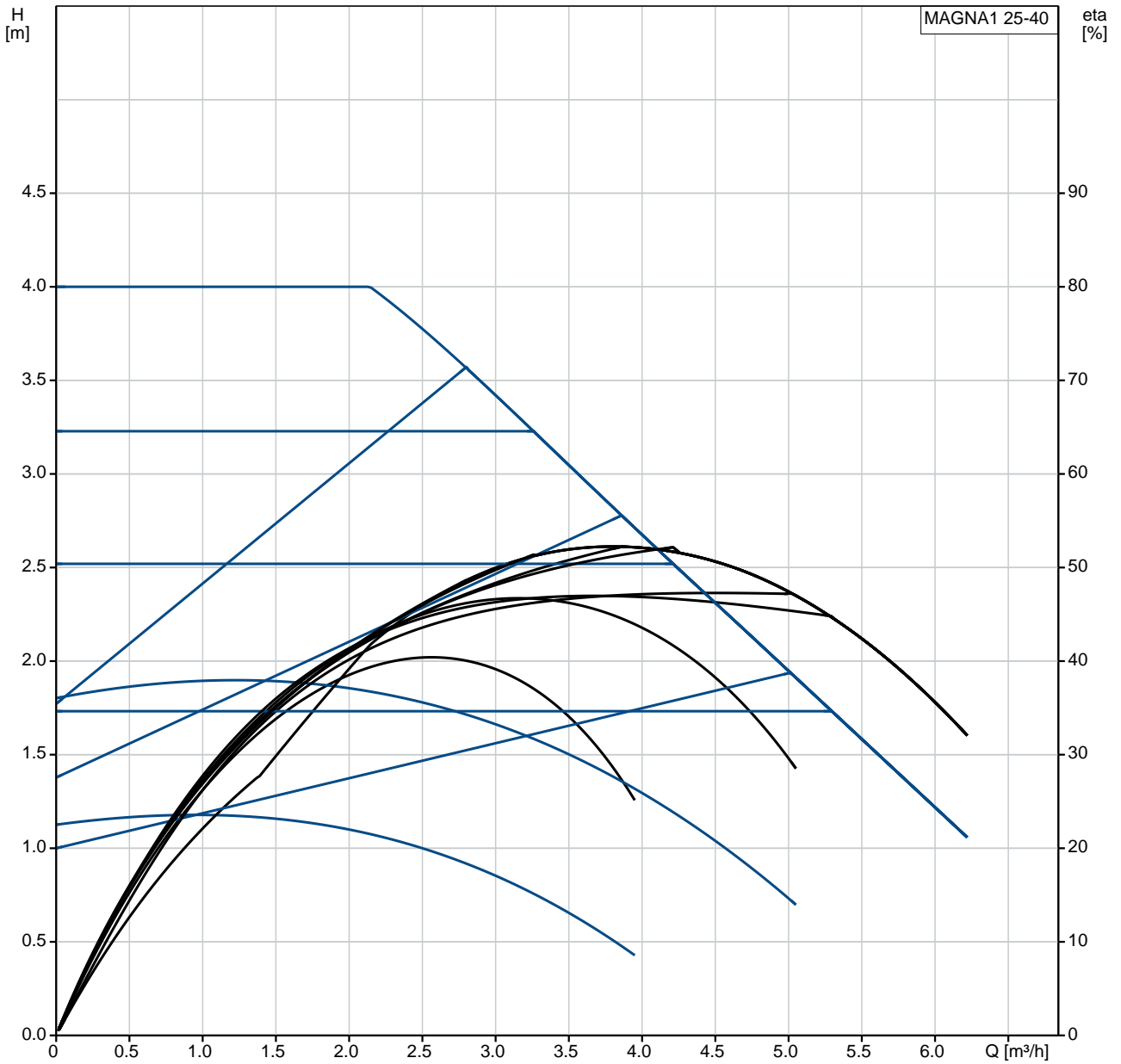
tel. +31 152 610 900

fax. +31 152 616 289

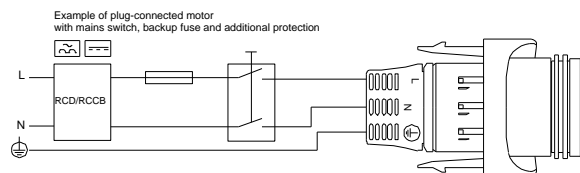
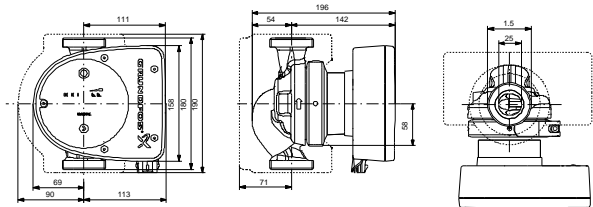
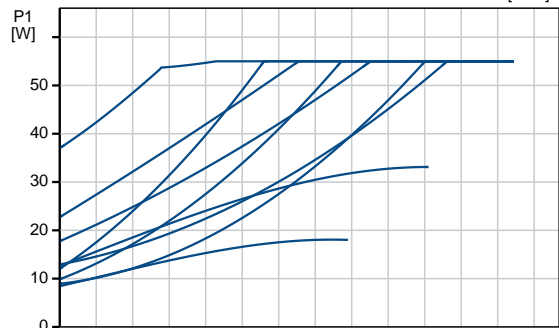
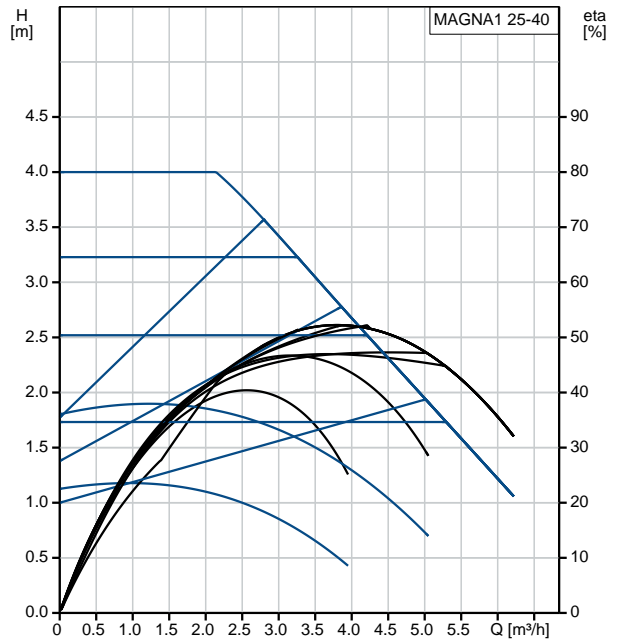
| Position | Qty. | Description   |
|----------|------|---|
|          | 1    | <p><b>MAGNA1 25-40</b></p>  <p>Product No.: On request</p> <p>MAGNA1 circulator pump with easy selection of pump setting<br/> The pump is of the canned-rotor type, i.e. pump and motor form an integral unit without shaft seal and with only two gaskets for sealing.<br/> The bearings are lubricated by the pumped liquid.<br/> In order to avoid problems in connection with disposal, great importance has been attached to using as few different materials as possible.<br/> A pump with no maintenance requirements and extremely low life cycle cost.</p> <p>Heating systems</p> <ul style="list-style-type: none"> <li>• Main pump</li> <li>• mixing loops</li> <li>• heating surfaces</li> <li>• air-conditioning surfaces.</li> </ul> <p>The MAGNA1 circulator pumps are designed for circulating liquids in heating systems with variable flows where it is desirable to optimise the setting of the pump duty point, thus reducing energy costs. The pumps are also suitable for domestic hot-water systems.</p> <p>To ensure correct operation, it is important that the sizing range of the system falls within the duty range of the pump.</p> <p>Benefits</p> <ul style="list-style-type: none"> <li>• Safe selection.</li> <li>• Simple installation.</li> <li>• Low energy consumption. All MAGNA1 pumps comply with the EuP requirements.</li> <li>• Nine light fields for indication of pump setting. Three proportional-pressure curves, three constant-pressure curves and three fixed-speed curves are available.</li> <li>• Low noise level.</li> <li>• No maintenance and long life.</li> </ul> <p><b>Liquid:</b></p> <p>Pumped liquid: Water<br/> Liquid temperature range: -10 .. 110 °C<br/> Liquid temperature during operation: 60 °C<br/> Density: 983.2 kg/m<sup>3</sup></p> <p><b>Technical:</b></p> <p>TF class: 110<br/> Approvals on nameplate: CE,VDE,EAC,CN ROHS</p> <p><b>Materials:</b></p> <p>Pump housing: Cast iron<br/> EN-GJL-200<br/> ASTM A48-200B</p> <p>Impeller: PES 30%GF</p> <p><b>Installation:</b></p> <p>Range of ambient temperature: 0 .. 40 °C<br/> Maximum operating pressure: 10 bar<br/> Pipe connection: G 1 1/2"</p> |

| Position | Qty. | Description   |
|----------|------|---|
|          |      | Pressure rating: PN10<br>(@): 180 mm<br><br><b>Electrical data:</b><br>Power input - P1: 9 .. 56 W<br>Mains frequency: 50 Hz<br>Rated voltage: 1 x 230 V<br>Maximum current consumption: 0.09 .. 0.45 A<br>Enclosure class (IEC 34-5): X4D<br>Insulation class (IEC 85): F<br><br><b>Others:</b><br>Energy (EEI): 0.22<br>Net weight: 4.21 kg<br>Gross weight: 4.89 kg<br>Shipping volume: 0.012 m <sup>3</sup><br>Danish VVS No.: 380760040<br>Finnish: LVI NO 4615255 |

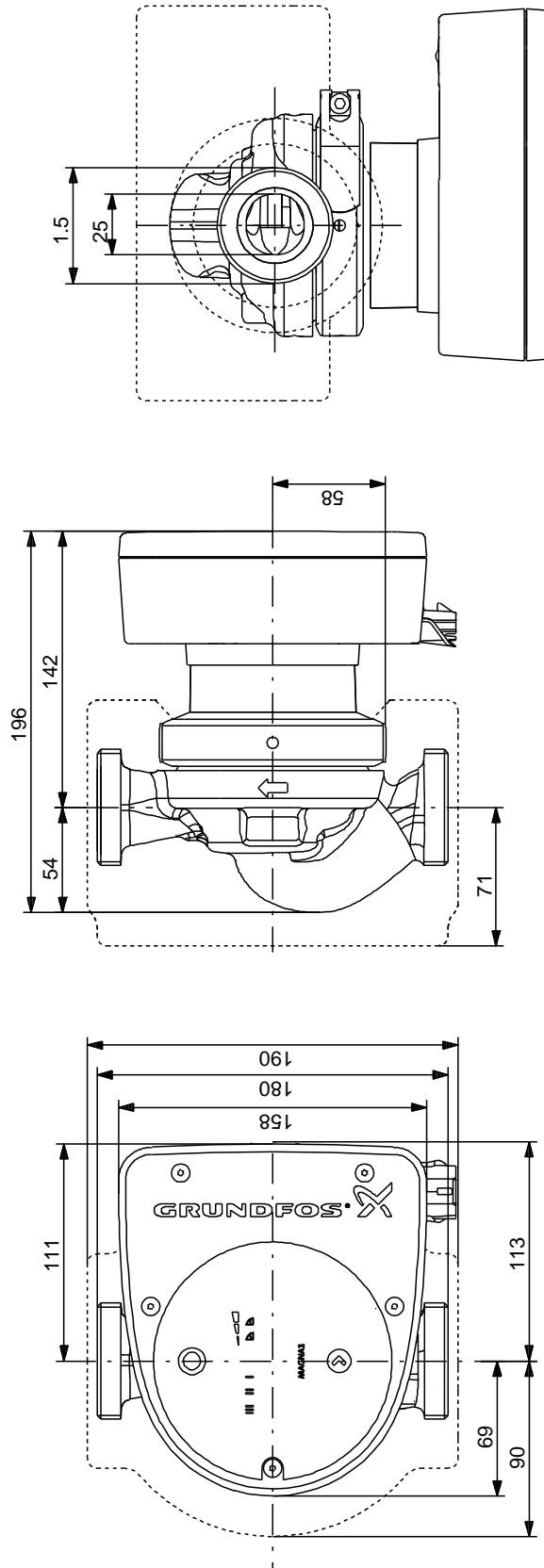
# On request MAGNA1 25-40 50 Hz



| Description                          | Value                   |
|--------------------------------------|-------------------------|
| <b>General information:</b>          |                         |
| Product name:                        | MAGNA1 25-40            |
| Product No:                          | On request              |
| EAN number:                          | On request              |
| <b>Technical:</b>                    |                         |
| Head max:                            | 40 dm                   |
| TF class:                            | 110                     |
| Approvals on nameplate:              | CE,VDE,EAC,CN ROHS      |
| Model:                               | A                       |
| <b>Materials:</b>                    |                         |
| Pump housing:                        | Cast iron               |
|                                      | EN-GJL-200              |
|                                      | ASTM A48-200B           |
| Impeller:                            | PES 30%GF               |
| <b>Installation:</b>                 |                         |
| Range of ambient temperature:        | 0 .. 40 °C              |
| Maximum operating pressure:          | 10 bar                  |
| Pipe connection:                     | G 1 1/2"                |
| Pressure rating:                     | PN10                    |
| (@)                                  | 180 mm                  |
| <b>Liquid:</b>                       |                         |
| Pumped liquid:                       | Water                   |
| Liquid temperature range:            | -10 .. 110 °C           |
| Liquid temperature during operation: | 60 °C                   |
| Density:                             | 983.2 kg/m <sup>3</sup> |
| <b>Electrical data:</b>              |                         |
| Power input - P1:                    | 9 .. 56 W               |
| Mains frequency:                     | 50 Hz                   |
| Rated voltage:                       | 1 x 230 V               |
| Maximum current consumption:         | 0.09 .. 0.45 A          |
| Enclosure class (IEC 34-5):          | X4D                     |
| Insulation class (IEC 85):           | F                       |
| <b>Others:</b>                       |                         |
| Energy (EEI):                        | 0.22                    |
| Net weight:                          | 4.21 kg                 |
| Gross weight:                        | 4.89 kg                 |
| Shipping volume:                     | 0.012 m <sup>3</sup>    |
| Danish VVS No.:                      | 380760040               |
| Finnish:                             | LVI NO 4615255          |

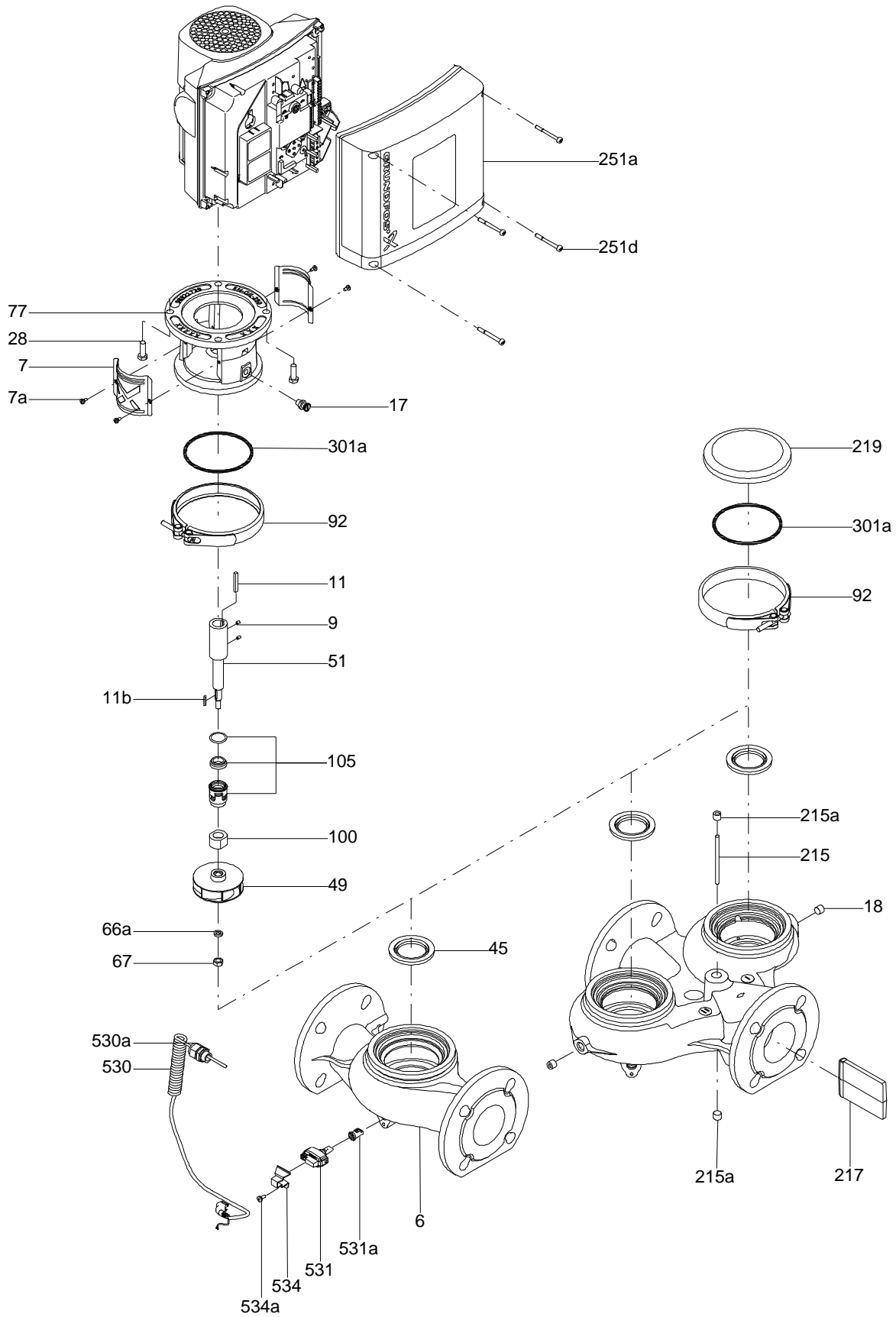


# On request MAGNA1 25-40 50 Hz



Note! All units are in [mm] unless others are stated.  
 Disclaimer: This simplified dimensional drawing does not show all details.

Exploded view



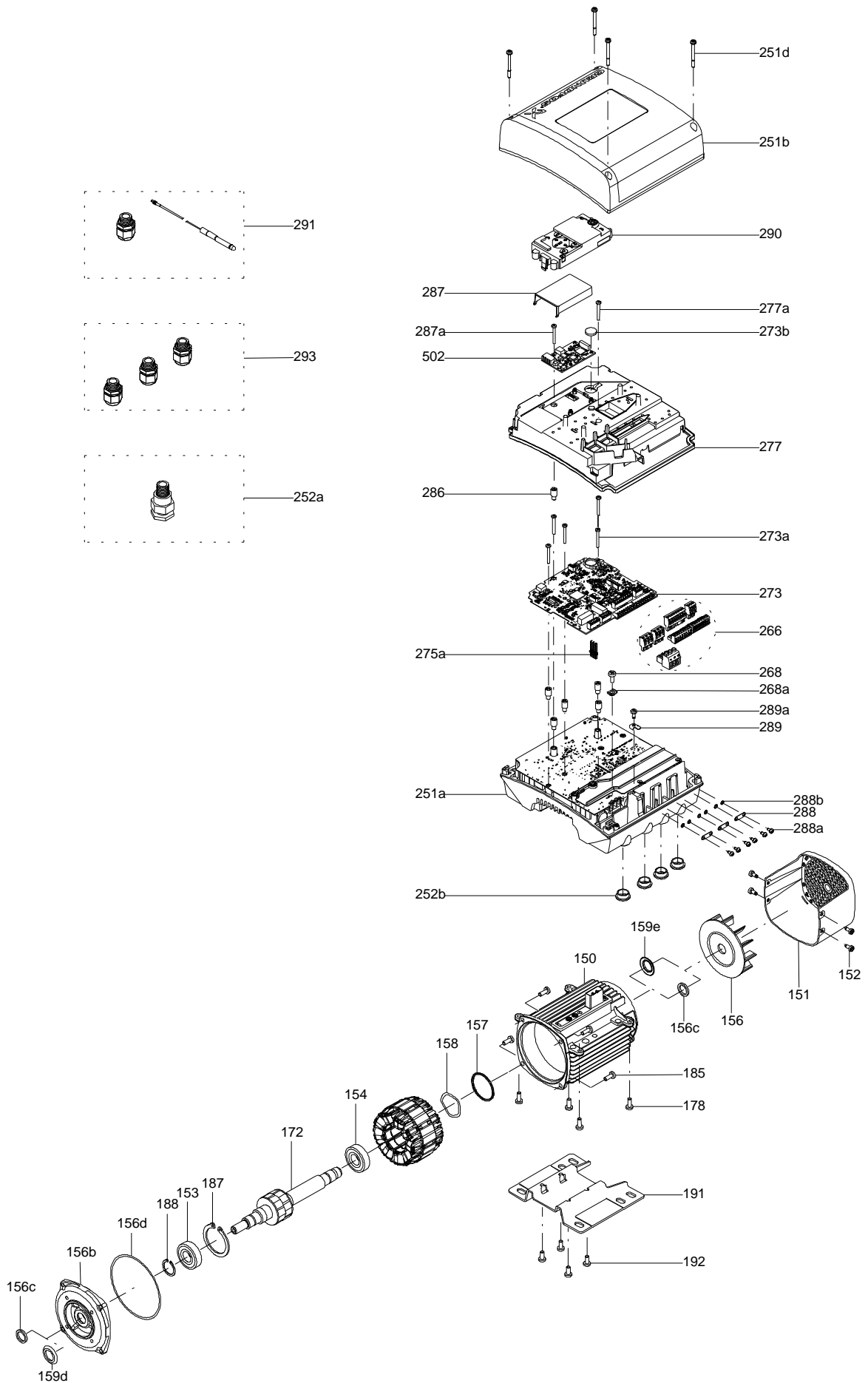
Sectional drawing (TM058200 for TPE2,TPE3)



TM058200



Exploded view ( TM057026 for MGE model H/I )



**Parts list MAGNA1 25-40, Product No. On request  
Valid from 18.10.2012 (1242)**

| Pos  | Description      | Annotation | Données de classification | Référence | Quantité | Unité |
|------|------------------|------------|---------------------------|-----------|----------|-------|
| -    | Control box      |            |                           |           | 1        | pcs   |
|      | Screw w/washer   |            |                           |           | 3        |       |
| 163  | Bottom           |            |                           |           | 1        |       |
| 164  | Cover            |            |                           |           | 1        |       |
| 164a | Screw DELTA PT   |            |                           |           | 5        |       |
|      | Foil             |            |                           |           | 1        | pcs   |
| 6    | Pump housing     |            |                           |           | 1        | pcs   |
| 92   | Clamp cpl.       |            |                           |           | 1        | pcs   |
| 163a | Pan head screw   |            |                           |           | 2        | pcs   |
| 302  | Pump head        |            |                           |           | 1        | pcs   |
| 450  | Insulation shell |            |                           |           | 1        | pcs   |

*Disclaimer: The information about the Grundfos pump in this document may be outdated.*

*Data may be subject to alterations without further notice.*

*Please contact us to verify the data above is still accurate/up-to-date.*

All information is copyright Grundfos.



[info@lenntech.com](mailto:info@lenntech.com)

<https://www.lenntech.com>

tel. +31 152 610 900

fax. +31 152 616 289