

CME25-1 A-R-G-V-AQQV L-A-D-N

Grundfos pump 97516787




Thank you for your interest in our products. Please contact us for more information, or visit our website


<https://www.lenntech.com/grundfos/CMEBASIS/97516787/CME25-1-A-R-G-V-AQQV.html>

info@lenntech.com

tel. +31 152 610 900

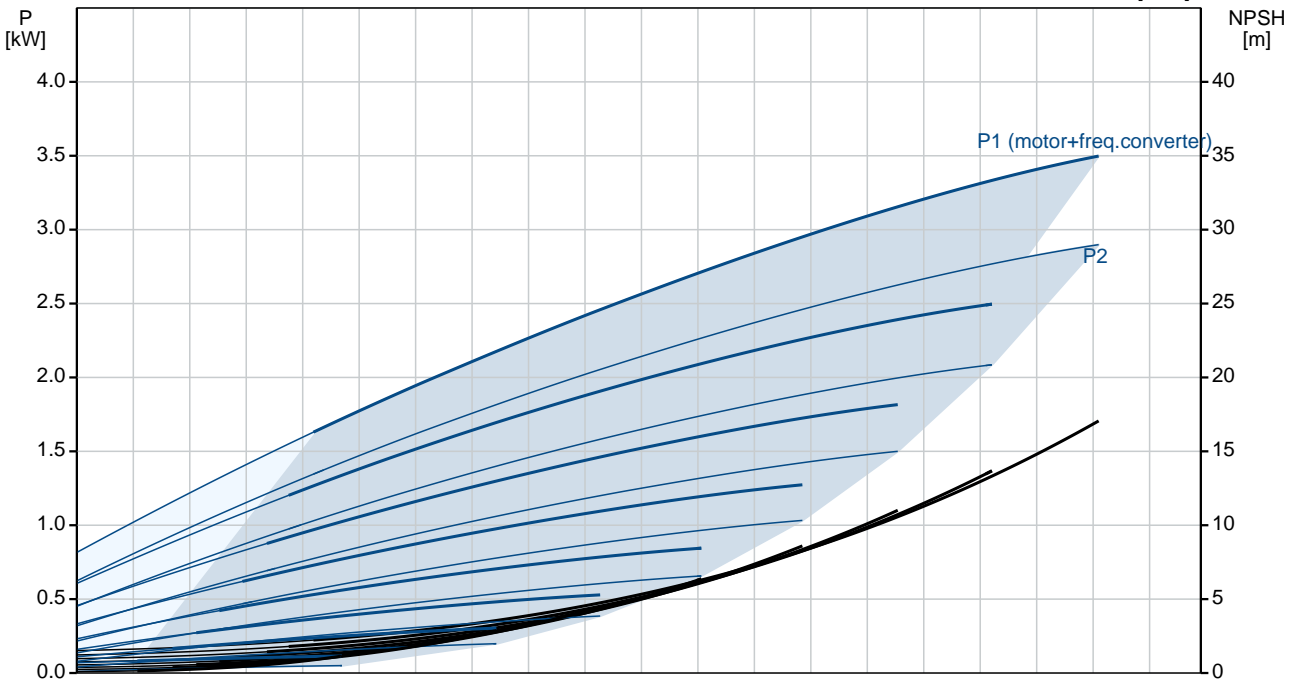
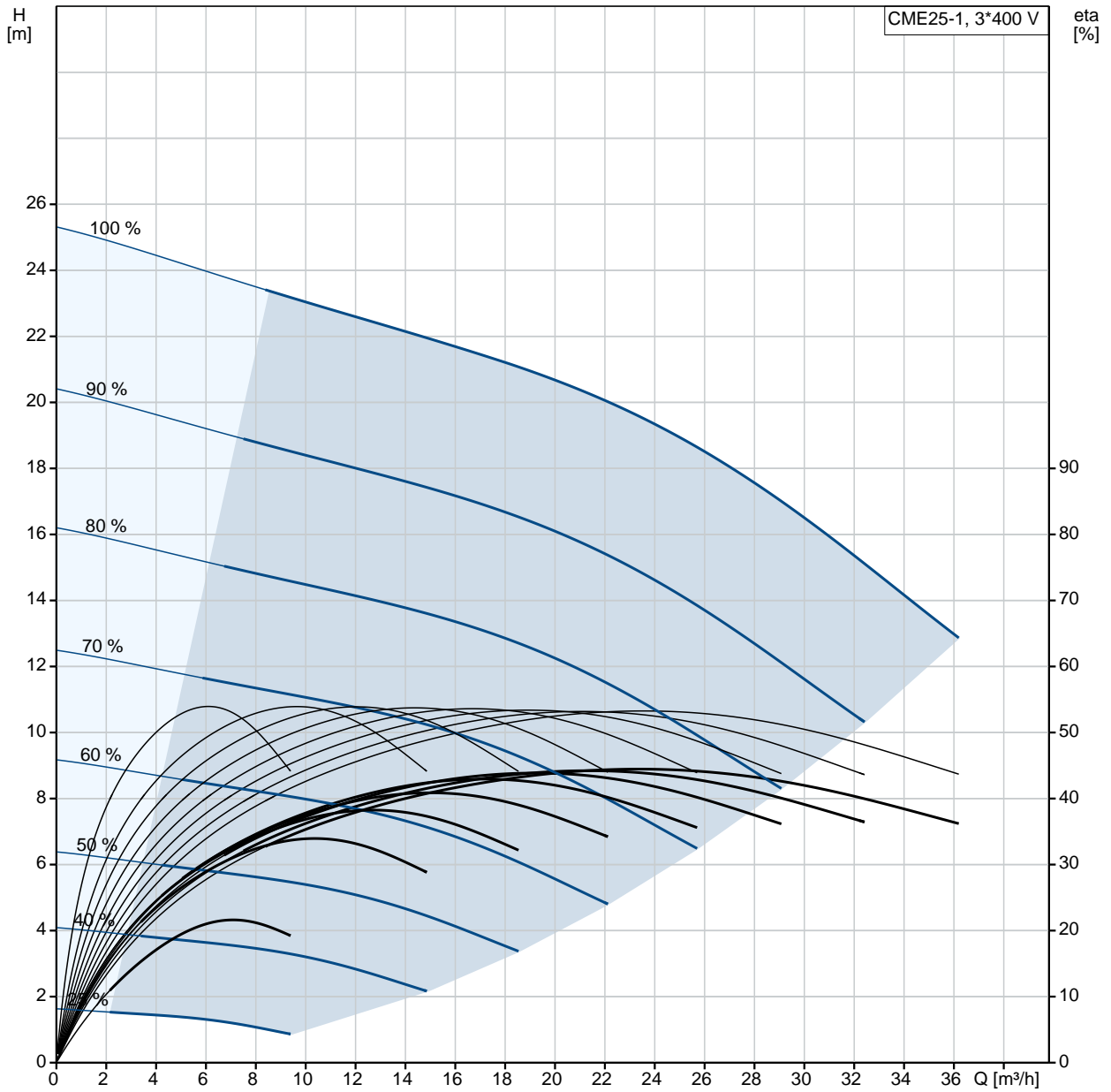
fax. +31 152 616 289

Position	Qty.	Description
	1	<p data-bbox="323 163 611 197">CME25-1 A-R-G-V-AQQV</p>  <p data-bbox="323 483 600 517">Product No.: On request</p> <p data-bbox="323 546 1453 647">Compact, reliable, horizontal, multistage, end-suction centrifugal pump with axial suction port and radial discharge port. Pump materials in contact with the liquid are in high-grade stainless steel. The mechanical shaft seal is a special designed, unbalanced O-ring seal. Pipework connection is via internal Whitworth pipe threads, Rp (ISO 7/1).</p> <p data-bbox="323 685 1453 792">The pump is fitted with a 3-phase, foot-mounted, fan-cooled asynchronous motor. The motor includes a frequency converter and PI controller in the motor terminal box. This enables continuously variable control of the motor speed, which again enables adaptation of the performance to a given requirement.</p> <p data-bbox="323 831 1453 904">An operating panel on the motor terminal box enables setting of required setpoint as well as setting of pump to "Min." or "Max." operation or to "Stop". The operating panel has indicator lights for "Operation" and "Fault".</p> <p data-bbox="323 920 1453 994">Communication with the pump is possible by means of Grundfos GO Remote (accessory). The remote control enables further settings as well as reading out of a number of parameters such as "Actual value", "Speed", "Power input" and total "Power consumption".</p> <p data-bbox="323 1032 1066 1330">The terminal box holds terminals for these connections:</p> <ul data-bbox="355 1061 1414 1330" style="list-style-type: none"> - pump start/stop input (potential-free contact) - remote setpoint setting via analog signal, 0-10 V, 0(4)-20 mA - 10 V voltage supply for setpoint potentiometer, I_{max} = 5 mA - one analog sensor input, 0-10 V, 0(4)-20 mA - 24 V voltage supply for sensor, I_{max} = 40 mA - one digital input - one potential-free fault signal relay with changeover contact, reporting "Fault", "Operation" or "Ready" - RS-485 GENIbus connection. <p data-bbox="323 1391 639 1424">Further product details</p> <p data-bbox="323 1424 1453 1476">Pump and motor are integrated in a compact and user-friendly design. The pump is fitted to a low base plate, making it ideal for installation in systems where compactness is important.</p> <p data-bbox="323 1480 1385 1532">The state-of-the-art design and materials of the shaft seal ensure high wear resistance, improved sticking and dry-running capabilities and long operating life.</p> <p data-bbox="323 1536 1430 1588">Servicing the pump requires no special service tools. Service parts are in stock for quick delivery and are available as kits, single parts or bulk. Service videos are available on www.youtube.com.</p> <p data-bbox="323 1626 932 1744">Frequency converter operation offers these functions:</p> <ul data-bbox="355 1659 932 1744" style="list-style-type: none"> - controlled operation, i.e. consumption fluctuates - constant pressure - communication with the pump. <p data-bbox="323 1783 1342 1901">Adaption of performance through frequency-controlled speed offers obvious benefits such as:</p> <ul data-bbox="355 1805 1107 1901" style="list-style-type: none"> - energy savings - increased comfort - control and monitoring of the application and pump performance. <p data-bbox="323 1928 1453 2002">An operating panel on the motor terminal box enables setting of required setpoint as well as setting of pump to "Min." or "Max." operation or to "Stop". The operating panel has indicator lights for "Operation" and "Fault".</p> <p data-bbox="323 2007 1453 2080">Communication with the pump is possible by means of Grundfos GO Remote (accessory). The remote control enables further settings as well as reading out of a number of parameters such as "Actual value", "Speed", "Power input" and total "Power consumption".</p>

Position	Qty.	Description
		<p>Pump</p> <p>A combination of a stop ring and a Nord-lock® washer secures a tight and reliable fixation of the impeller spacing pipes to the splined pump shaft. It is possible to remove and fit the hydraulic parts from the pump side. The inlet and outlet port are integrated in the pump sleeve. The inlet part, chambers and discharge part are hold together by four staybolts and a retaining flange.</p> <p>The pump is fitted with an unbalanced O-ring seal with a rigid torque-transmission system. It has a fixed seal driver ensuring a reliable rotation of all parts. The dynamic secondary seal is an O-ring.</p> <p>Primary seal:</p> <ul style="list-style-type: none"> • Rotating seal ring material: silicon carbide (SiC) • Stationary seat material: silicon carbide (SiC) <p>This material pairing is used where higher corrosion resistance is required. The high hardness of this material pairing offers good resistance against abrasive particles.</p> <p>Secondary seal material: FKM (fluorocarbon rubber)</p> <p>FKM has excellent resistance to oils and chemicals. Above 90 °C, FKM should only be used in media without water.</p>  <p>The pump shaft is connected to the motor shaft through a left thread and tight fit. The shaft cannot be dismantled.</p> <p>Motor</p> <p>The motor is a totally enclosed, fan-cooled motor with principal dimensions to EN 50347. Electrical tolerances comply with EN 60034.</p> <p>The motor efficiency is classified as IE2 in accordance with IEC 60034-30.</p> <p>The motor requires no external motor protection. The motor control unit incorporates protection against slow- and quick-rising temperatures, e.g. constant overload and stalled conditions.</p> <p>The terminal box holds terminals for these connections:</p> <ul style="list-style-type: none"> - pump start/stop input (potential-free contact) - remote setpoint setting via analog signal, 0-10 V, 0(4)-20 mA - 10 V voltage supply for setpoint potentiometer, I_{max} = 5 mA - one analog sensor input, 0-10 V, 0(4)-20 mA - 24 V voltage supply for sensor, I_{max} = 40 mA - one digital input - one potential-free fault signal relay with changeover contact, reporting "Fault", "Operation" or "Ready" - RS-485 GENIbus connection. <p>Technical data</p> <p>Liquid:</p> <p>Pumped liquid: Water</p> <p>Liquid temperature range: -20 .. 90 °C</p> <p>Liquid temperature during operation: 20 °C</p> <p>Density: 998.2 kg/m³</p> <p>Technical:</p> <p>Rated flow: 26.4 m³/h</p> <p>Rated head: 19.1 m</p> <p>Primary shaft seal: AQQV</p> <p>Approvals on nameplate: CE,WRAS,ACS,TR,CURUS,EAC</p> <p>Curve tolerance: ISO9906:2012 3B</p> <p>Materials:</p> <p>Pump housing: Stainless steel DIN W.-Nr. 1.4401 AISI 316</p> <p>Impeller: Stainless steel</p>

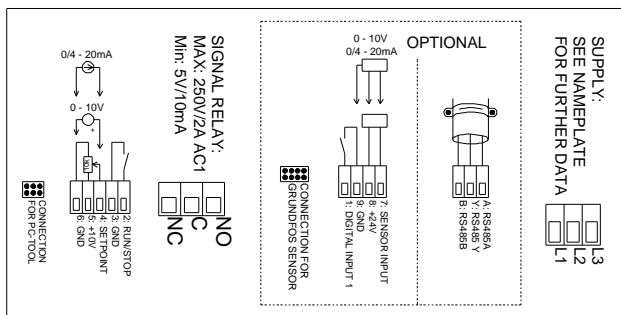
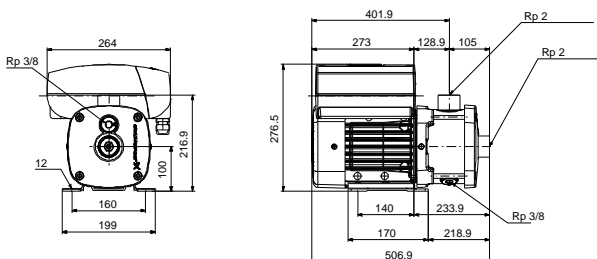
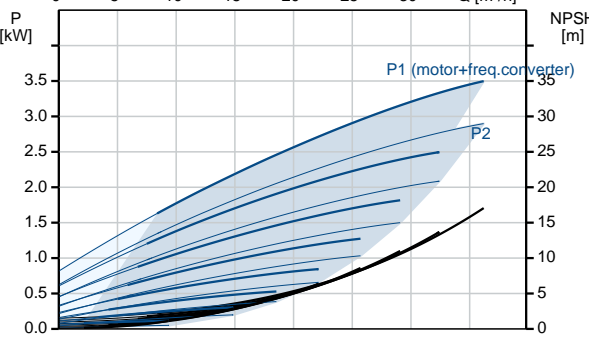
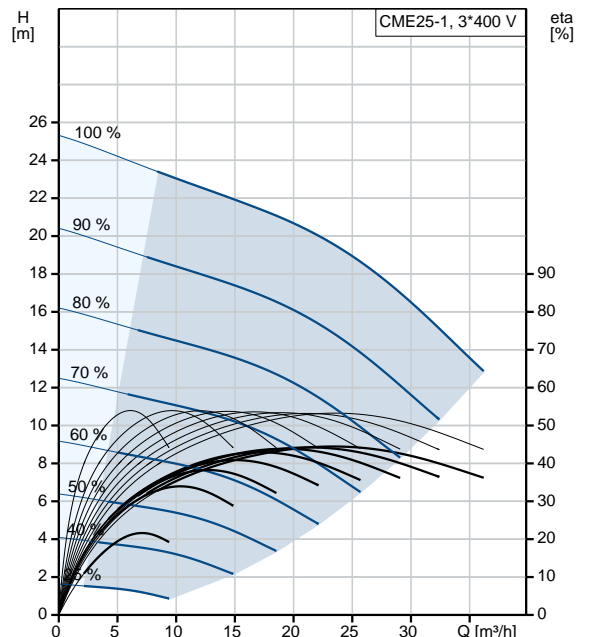
Position	Qty.	Description
		<p>DIN W.-Nr. 1.4401 AISI 316 Rubber: FKM</p> <p>Installation: Maximum ambient temperature: 40 °C Maximum operating pressure: 16 bar Max pressure at stated temp: 16 bar / 90 °C Flange standard: WHITWORTH THREAD RP Pump inlet: Rp 2 Pump outlet: Rp 2</p> <p>Electrical data: Motor type: 100LC IE Efficiency class: IE2 Rated power - P2: 3 kW Mains frequency: 50 Hz Rated voltage: 3 x 380-480 V Rated current: 6.20-5.00 A Rated speed: 360-3490 rpm Enclosure class (IEC 34-5): IP55 Insulation class (IEC 85): F</p> <p>Others: Minimum efficiency index, MEI : 0.41 Net weight: 38.1 kg Gross weight: 41.6 kg</p>

On request CME25-1 A-R-G-V-AQQV 50 Hz

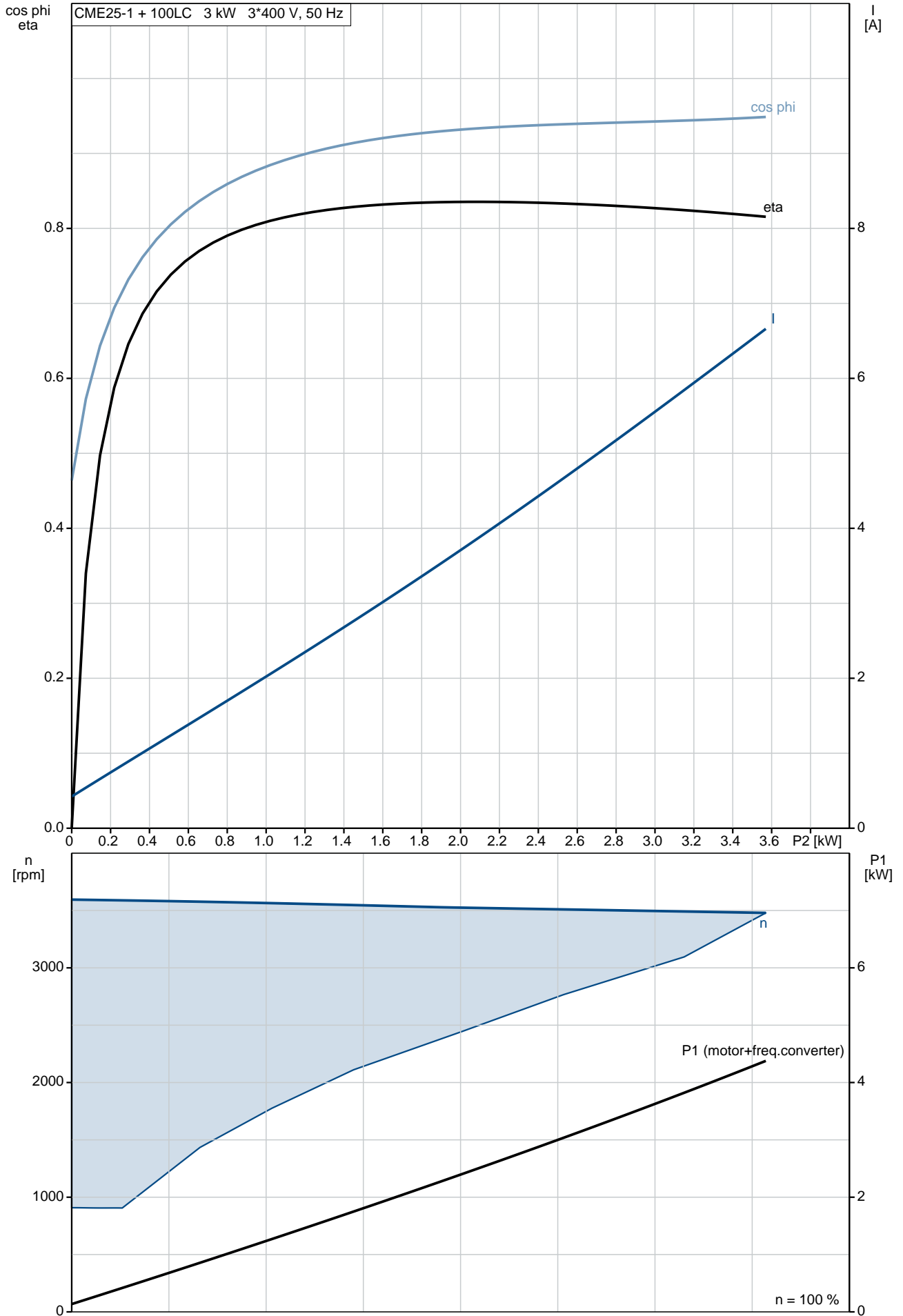


Description	Value
General information:	
Product name:	CME25-1 A-R-G-V-AQQV
Product No:	On request
EAN number:	On request
Technical:	
Rated flow:	26.4 m ³ /h
Rated head:	19.1 m
Impellers:	1
Primary shaft seal:	AQQV
Approvals on nameplate:	CE, WRAS, ACS, TR, CURUS, EAC
Curve tolerance:	ISO9906:2012 3B
Pump version:	A
Model:	A
Materials:	
Pump housing:	Stainless steel DIN W.-Nr. 1.4401 AISI 316
Impeller:	Stainless steel DIN W.-Nr. 1.4401 AISI 316
Material code:	G
Rubber:	FKM
Code for rubber:	V
Installation:	
Maximum ambient temperature:	40 °C
Maximum operating pressure:	16 bar
Max pressure at stated temp:	16 bar / 90 °C
Flange standard:	WHITWORTH THREAD RP
Pump inlet:	Rp 2
Pump outlet:	Rp 2
Connect code:	R
Liquid:	
Pumped liquid:	Water
Liquid temperature range:	-20 .. 90 °C
Liquid temperature during operation:	20 °C
Density:	998.2 kg/m ³
Electrical data:	
Motor type:	100LC
IE Efficiency class:	IE2
Rated power - P2:	3 kW
Mains frequency:	50 Hz
Rated voltage:	3 x 380-480 V
Rated current:	6.20-5.00 A
Rated speed:	360-3490 rpm
Enclosure class (IEC 34-5):	IP55
Insulation class (IEC 85):	F
Motor protec:	TP211

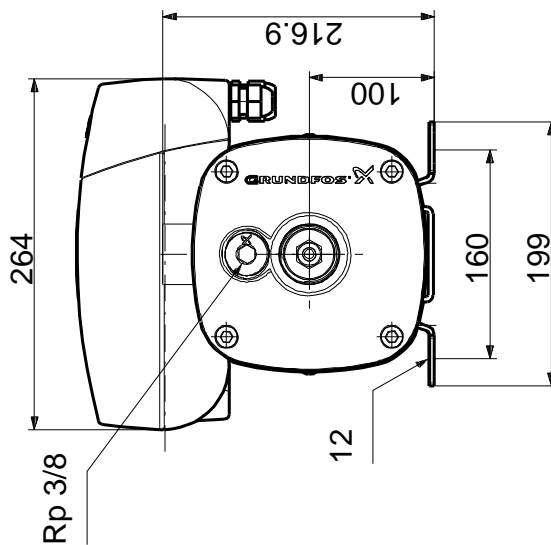
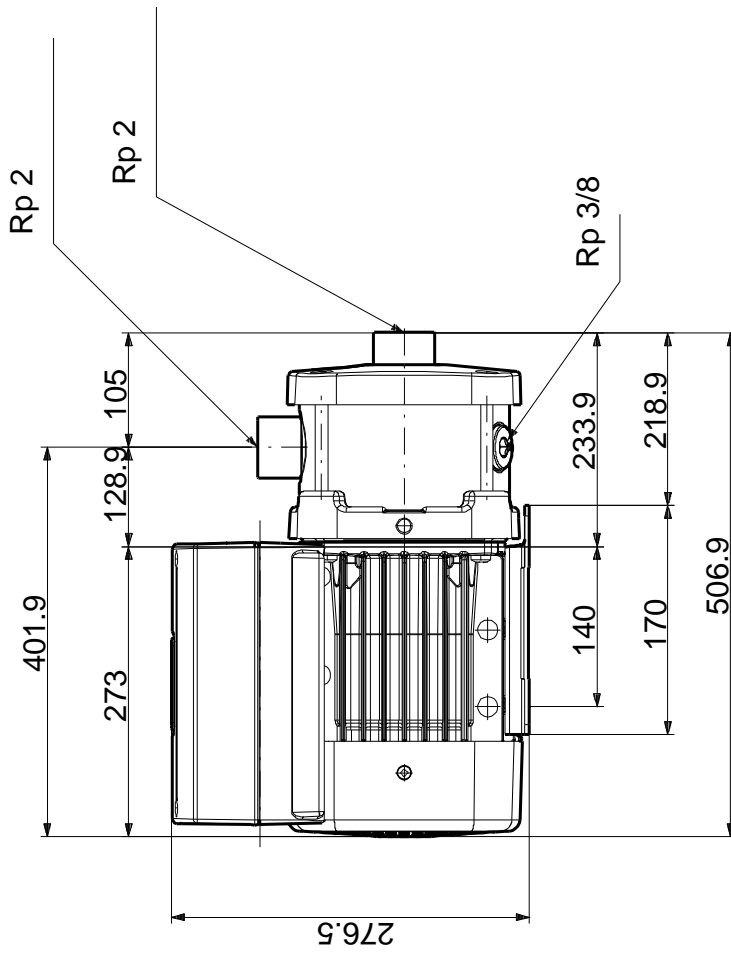
Others:	
Minimum efficiency index, MEI :	0.41
Net weight:	38.1 kg
Gross weight:	41.6 kg
Config. file no:	97845066



On request CME25-1 A-R-G-V-AQQV 50 Hz

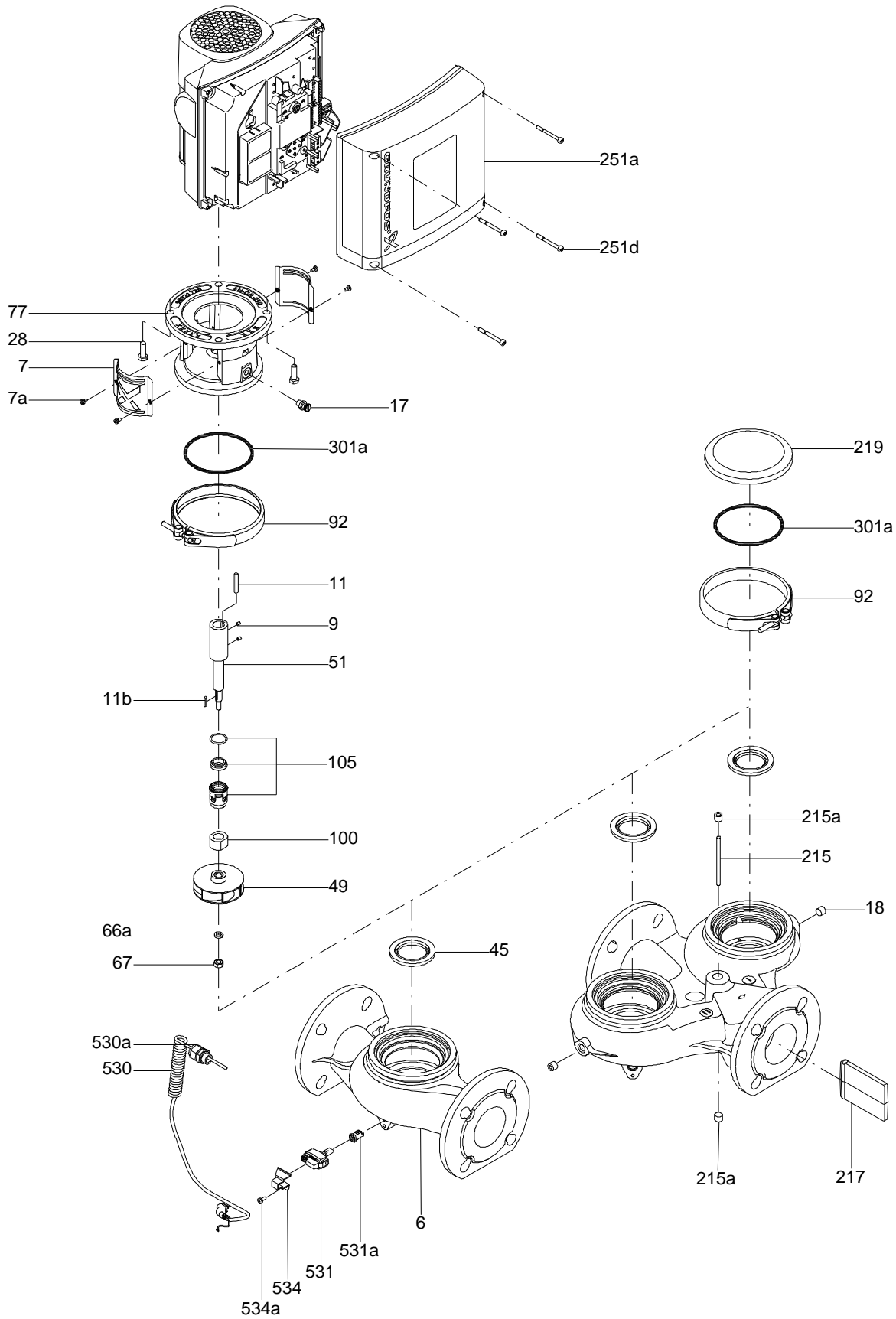


On request CME25-1 A-R-G-V-AQQV 50 Hz

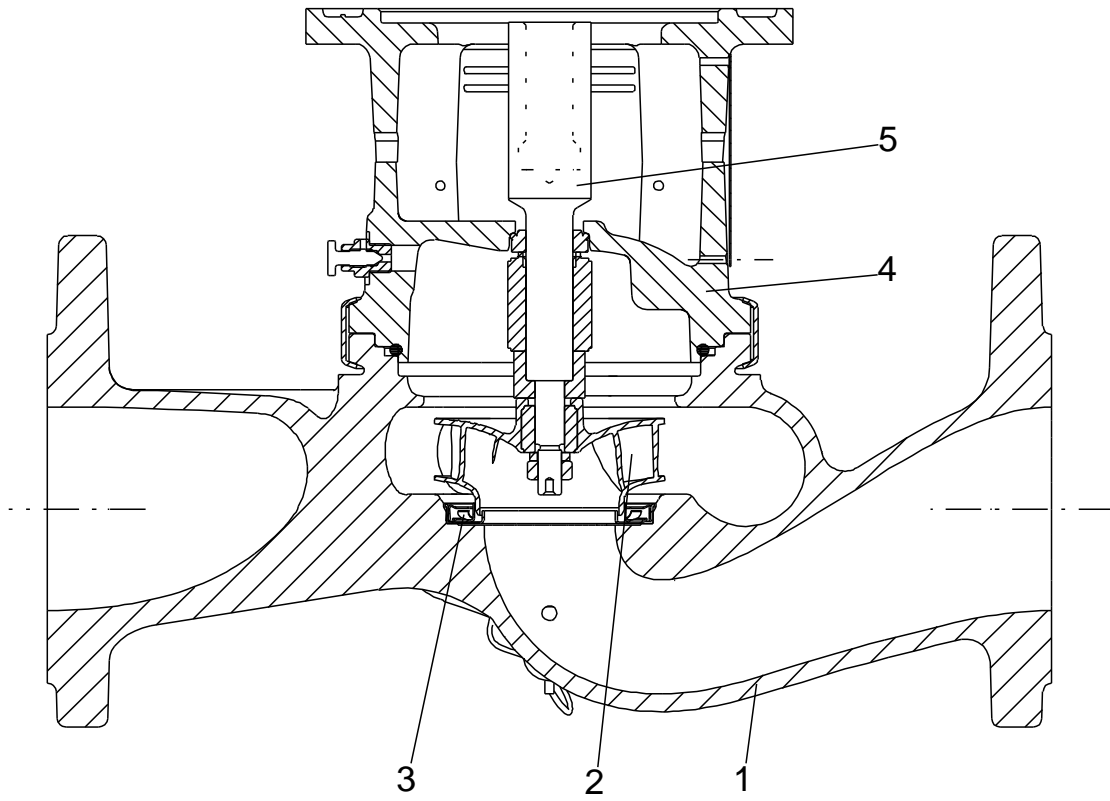


Note! All units are in [mm] unless others are stated.
Disclaimer: This simplified dimensional drawing does not show all details.

Exploded view

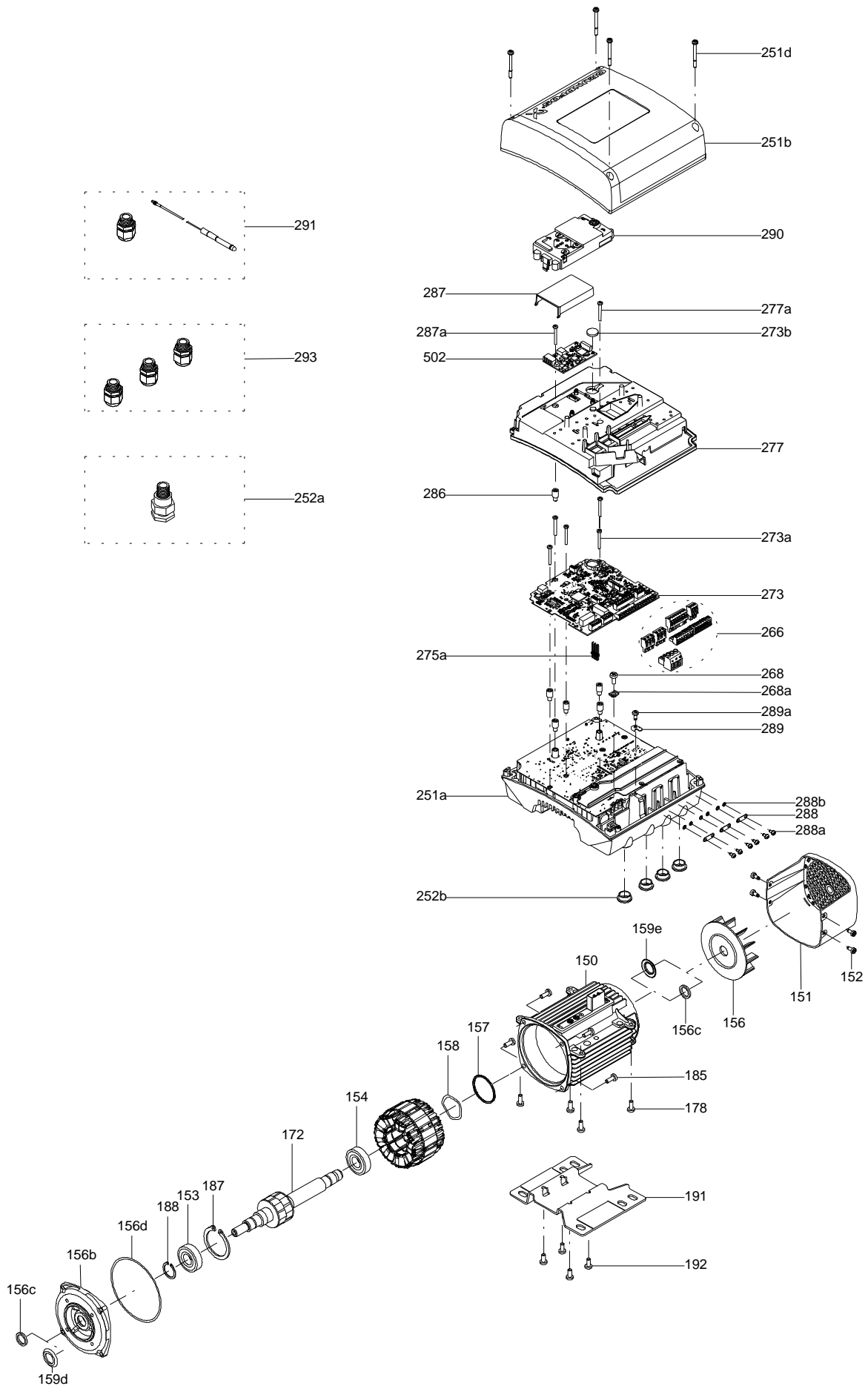


Sectional drawing (TM058200 for TPE2,TPE3)



TM058200

Exploded view (TM057026 for MGE model H/I)



Parts list CME25-1, Product No. On request
Valid from 9.2.2009 (0907)

Pos	Description	Annotation	Données de classification	Référence	Quantité	Unité
	Jumper				1	pcs
	MGE100LC				1	pcs
	Cross recess countersunk screw				4	pcs
- 4	Chamber				1	pcs
	Seal ring				1	
	Intermediate chamber				1	
	Sand Lifter				1	
45	Seal ring				1	
65	Neck ring retainer				1	
4	Chamber, empty				1	pcs
4.d	Chamber				1	pcs
- 4f	Chamber cpl.				1	pcs
	Inlet part				1	
	Sand Lifter				1	
6.a	Flange				1	pcs
16	Collar sleeve cpl.				1	pcs
- 25	Drain plug cpl.				2	pcs
11	O-ring		Diameter: 18,5 Material type: FKM Thickness: 2		1	
25	Plug				1	
26	Hex socket head cap screw		Length (mm): 140 Thread: M08		4	pcs
31	O-ring		Diameter: 153 Material type: FKM Thickness: 4,7		1	pcs
- 32	Cover plate				1	pcs
	Cover plate				1	
	Plate				1	
36	Lock nut		Thread: M8		1	pcs
49	Impeller cpl.				1	pcs
51	Pump shaft		Diameter: D16		1	pcs
64.a	Spacing pipe				1	pcs
64.c	Clamp				1	pcs
66	Wedge lock washer				1	pcs
76	Nameplate				2	pcs
- 105	Shaft seal				1	pcs
103	Seal ring, stationary				1	
104	Seal ring, rotating				1	
107	O-ring		Diameter: 15.5 Material type: FKM Thickness: 3.18		1	
108	Compression spring				1	
109	O-ring		Diameter: 22,00 Material type: FKM Thickness: 2,75		1	
111	Retainer				1	
112	Driver for shaft seal				1	
111.a	Stop ring				1	pcs
151	Fan cover				1	pcs
152	Pan head thread forming screw				4	pcs
156	Fan				1	pcs
191	Base plate				1	pcs

Disclaimer: The information about the Grundfos pump in this document may be outdated.

Data may be subject to alterations without further notice.

Please contact us to verify the data above is still accurate/up-to-date.

All information is copyright Grundfos.



info@lenntech.com

<https://www.lenntech.com>

tel. +31 152 610 900

fax. +31 152 616 289