

TP 40-190/2-A-F-A-BUBE 400Y 50HZ Grundfos pump 96463769




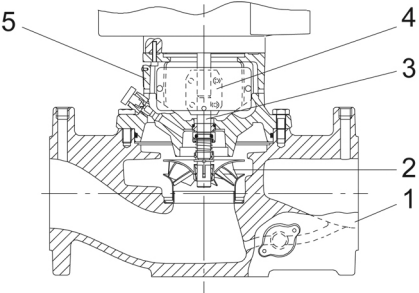
Thank you for your interest in our products. Please contact us for more information, or visit our website

<https://www.lenntech.com/grundfos/TP000/96463769/TP-40-190-2-A-F-A-BUBE.html>

info@lenntech.com

tel. +31 152 610 900

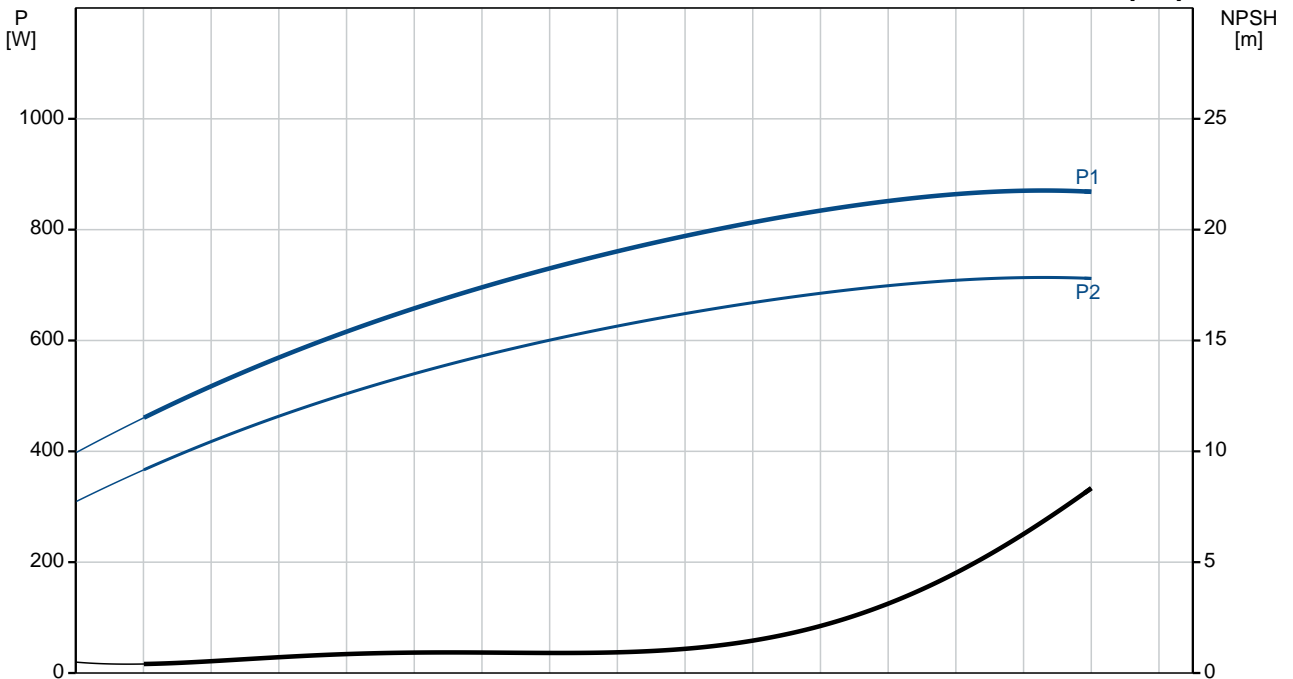
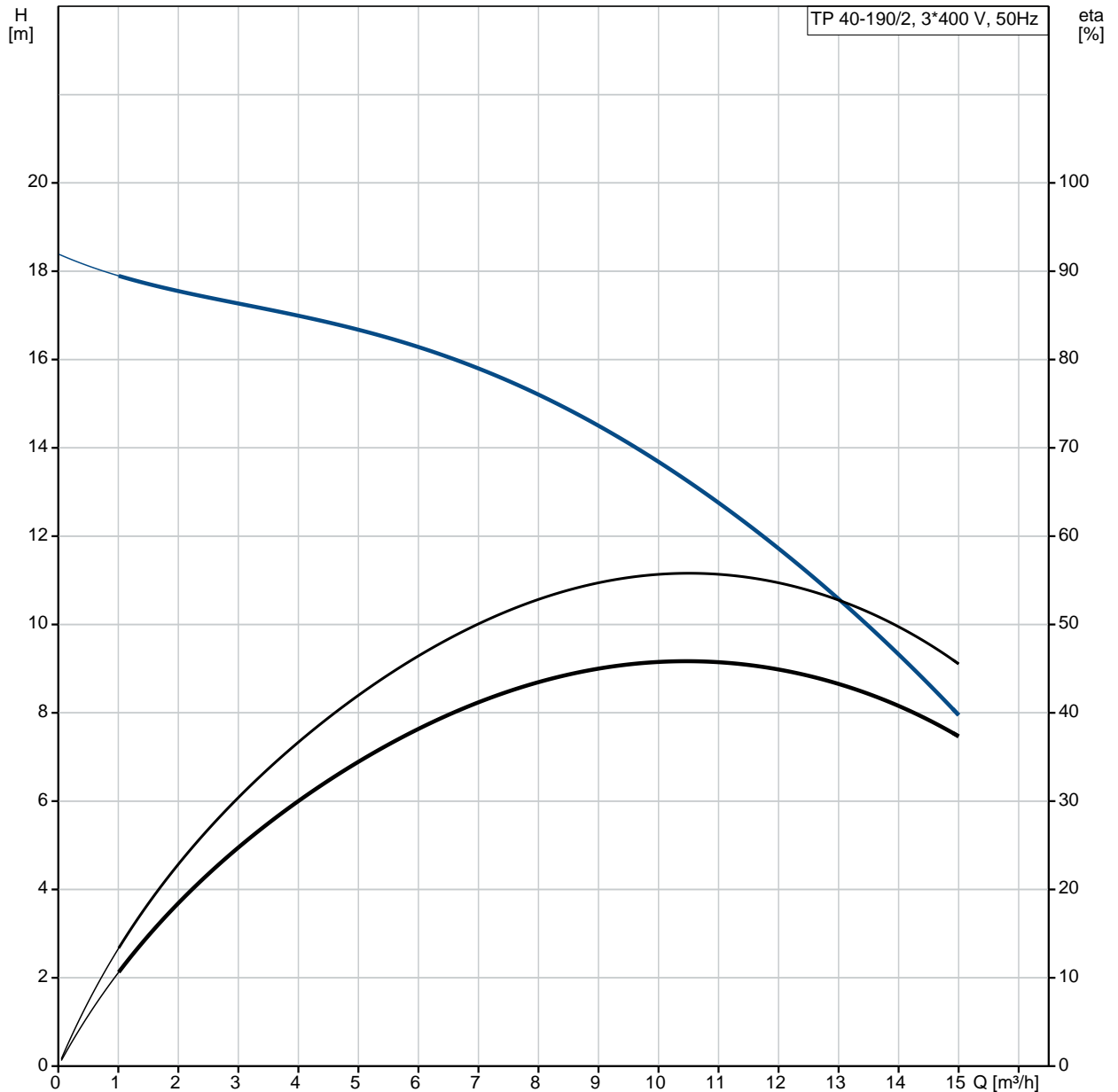
fax. +31 152 616 289

Position	Qty.	Description
	1	<p data-bbox="320 159 611 188">TP 40-190/2 A-F-A-BUBE</p>  <p data-bbox="320 483 600 512">Product No.: On request</p> <p data-bbox="320 544 1445 618">Single-stage, close-coupled, volute pump with in-line suction and discharge ports of identical diameter. The pump is of the top-pull-out design, i.e. the power head (motor, pump head and impeller) can be removed for maintenance or service while the pump housing remains in the pipework.</p> <p data-bbox="320 629 1422 680">The pump is fitted with an unbalanced rubber bellows seal. The shaft seal is according to EN 12756. Pipework connection is via PN 16 DIN flanges (EN 1092-2 and ISO 7005-2).</p> <p data-bbox="320 687 951 716">The pump is fitted with a fan-cooled asynchronous motor.</p> <p data-bbox="320 745 639 777">Further product details</p> <p data-bbox="320 781 400 813">Pump</p> <p data-bbox="320 817 1257 846">Pump housing and pump head are electrocoated to improve the corrosion resistance.</p> <p data-bbox="320 851 584 880">Electrocoating includes:</p> <ol data-bbox="320 884 810 994" style="list-style-type: none"> 1) Alkaline-based cleaning. 2) Pretreatment with zinc phosphate coating. 3) Cathodic electrocoating (epoxy). 4) Curing of paint film at 200-250 °C.  <ol data-bbox="320 1328 507 1473" style="list-style-type: none"> 1: Pump housing 2: Impeller 3: Shaft 4: Coupling 5: Pump head <p data-bbox="320 1505 1458 1579">The pump housing is provided with a replaceable stainless steel/PTFE neck ring to reduce the amount of liquid running from the discharge side of the impeller to the suction side. The impeller is secured with a split cone with nut.</p> <p data-bbox="320 1619 1441 1693">The pump is fitted with an unbalanced rubber bellows seal with torque transmission across the spring and around the bellows. Due to the bellows, the seal does not wear the shaft, and the axial movement is not prevented by deposits on the shaft.</p> <p data-bbox="320 1704 467 1733">Primary seal:</p> <ul data-bbox="357 1738 1058 1794" style="list-style-type: none"> • Rotating seal ring material: tungsten carbide (WC) • Stationary seat material: carbon graphite, resin-impregnated <p data-bbox="320 1798 1433 1895">This is a widely used material pairing. If the pumped liquid contains particles, wear on the seal faces must be expected. Due to the favourable lubricating properties of carbon graphite, the seal is suitable for use even under poor lubricating conditions, such as hot water. However, under such conditions, wear on the carbon graphite face reduces seal life.</p> <p data-bbox="320 1906 986 1935">Secondary seal material: EPDM (ethylene-propylene rubber)</p> <p data-bbox="320 1939 1219 1968">EPDM has excellent resistance to hot water. EPDM is not suitable for mineral oils.</p> <p data-bbox="320 2000 1445 2051">A circulation of liquid through the duct of the air vent screw ensures lubrication and cooling of the shaft seal.</p> <p data-bbox="320 2056 983 2085">The flanges have tapings for mounting of pressure gauges.</p>

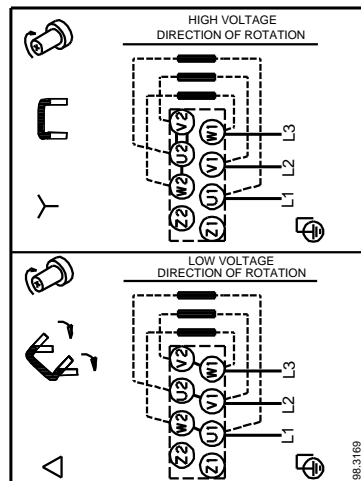
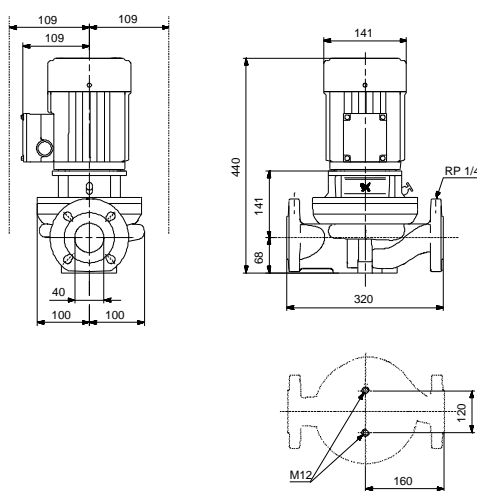
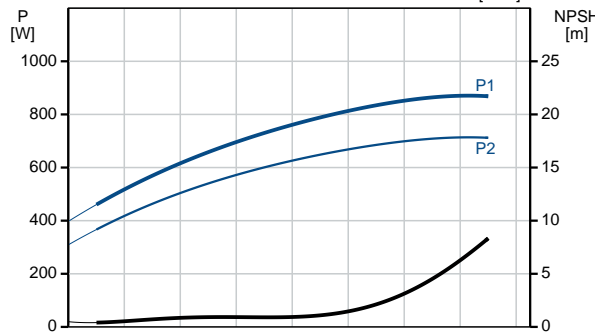
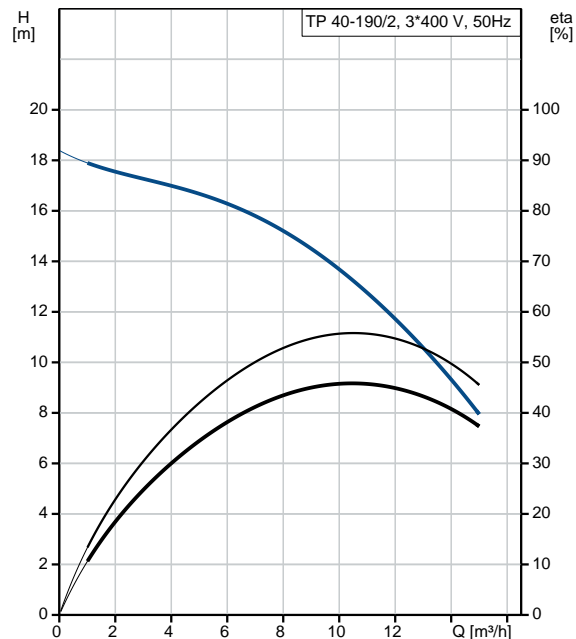
Position	Qty.	Description																																																														
		<p>The motor stool forms connection between the pump housing and the motor, and is equipped with a manual air vent screw for venting of the pump housing and the shaft seal chamber. The sealing between motor stool and pump housing is an O-ring.</p> <p>The central part of the motor stool is provided with guards for protection against the shaft and coupling. Motor and pump shaft are connected via a shell coupling.</p> <p>Motor</p> <p>The motor is a totally enclosed, fan-cooled motor with principal dimensions to IEC and DIN standards. Electrical tolerances comply with IEC 60034.</p> <p>The motor is flange-mounted with tapped-hole flange (FT). Motor-mounting designation in accordance with IEC 60034-7: IM B 14, IM V 18 (Code I) / IM 3601, IM 3611 (Code II).</p> <p>The motor efficiency is classified as IE3 in accordance with IEC 60034-30-1. The motor does not incorporate motor protection and must be connected to a motor-protective circuit breaker which can be manually reset. The motor-protective circuit breaker must be set according to the rated current of the motor (I1/1).</p> <p>Technical data</p> <p>Liquid:</p> <table> <tr> <td>Pumped liquid:</td> <td>Water</td> </tr> <tr> <td>Liquid temperature range:</td> <td>0 .. 140 °C</td> </tr> <tr> <td>Liquid temperature during operation:</td> <td>20 °C</td> </tr> <tr> <td>Density:</td> <td>998.2 kg/m³</td> </tr> </table> <p>Technical:</p> <table> <tr> <td>Rated flow:</td> <td>10.5 m³/h</td> </tr> <tr> <td>Rated head:</td> <td>13.2 m</td> </tr> <tr> <td>Actual impeller diameter:</td> <td>124 mm</td> </tr> <tr> <td>Primary shaft seal:</td> <td>BUBE</td> </tr> <tr> <td>Curve tolerance:</td> <td>ISO9906:2012 3B</td> </tr> </table> <p>Materials:</p> <table> <tr> <td>Pump housing:</td> <td>Cast iron EN-JL1040 ASTM A48-40 B</td> </tr> <tr> <td>Impeller:</td> <td>Stainless steel DIN W.-Nr. 1.4301 AISI 304</td> </tr> </table> <p>Installation:</p> <table> <tr> <td>Range of ambient temperature:</td> <td>-30 .. 60 °C</td> </tr> <tr> <td>Maximum operating pressure:</td> <td>16 bar</td> </tr> <tr> <td>Flange standard:</td> <td>DIN</td> </tr> <tr> <td>Pipe connection:</td> <td>DN 40</td> </tr> <tr> <td>Pump inlet:</td> <td>DN 40</td> </tr> <tr> <td>Pump outlet:</td> <td>DN 40</td> </tr> <tr> <td>Pressure rating:</td> <td>PN 16</td> </tr> <tr> <td>(@):</td> <td>320 mm</td> </tr> <tr> <td>Flange size for motor:</td> <td>FT100</td> </tr> </table> <p>Electrical data:</p> <table> <tr> <td>Motor type:</td> <td>80A</td> </tr> <tr> <td>IE Efficiency class:</td> <td>IE3</td> </tr> <tr> <td>Rated power - P2:</td> <td>0.75 kW</td> </tr> <tr> <td>Power (P2) required by pump:</td> <td>0.75 kW</td> </tr> <tr> <td>Mains frequency:</td> <td>50 Hz</td> </tr> <tr> <td>Rated voltage:</td> <td>3 x 220-240D/380-415Y V</td> </tr> <tr> <td>Rated current:</td> <td>3.30/1.90 A</td> </tr> <tr> <td>Starting current:</td> <td>580-620 %</td> </tr> <tr> <td>Cos phi - power factor:</td> <td>0.81-0.71</td> </tr> <tr> <td>Rated speed:</td> <td>2840-2870 rpm</td> </tr> <tr> <td>Efficiency:</td> <td>IE3 80,7%</td> </tr> </table>	Pumped liquid:	Water	Liquid temperature range:	0 .. 140 °C	Liquid temperature during operation:	20 °C	Density:	998.2 kg/m ³	Rated flow:	10.5 m ³ /h	Rated head:	13.2 m	Actual impeller diameter:	124 mm	Primary shaft seal:	BUBE	Curve tolerance:	ISO9906:2012 3B	Pump housing:	Cast iron EN-JL1040 ASTM A48-40 B	Impeller:	Stainless steel DIN W.-Nr. 1.4301 AISI 304	Range of ambient temperature:	-30 .. 60 °C	Maximum operating pressure:	16 bar	Flange standard:	DIN	Pipe connection:	DN 40	Pump inlet:	DN 40	Pump outlet:	DN 40	Pressure rating:	PN 16	(@):	320 mm	Flange size for motor:	FT100	Motor type:	80A	IE Efficiency class:	IE3	Rated power - P2:	0.75 kW	Power (P2) required by pump:	0.75 kW	Mains frequency:	50 Hz	Rated voltage:	3 x 220-240D/380-415Y V	Rated current:	3.30/1.90 A	Starting current:	580-620 %	Cos phi - power factor:	0.81-0.71	Rated speed:	2840-2870 rpm	Efficiency:	IE3 80,7%
Pumped liquid:	Water																																																															
Liquid temperature range:	0 .. 140 °C																																																															
Liquid temperature during operation:	20 °C																																																															
Density:	998.2 kg/m ³																																																															
Rated flow:	10.5 m ³ /h																																																															
Rated head:	13.2 m																																																															
Actual impeller diameter:	124 mm																																																															
Primary shaft seal:	BUBE																																																															
Curve tolerance:	ISO9906:2012 3B																																																															
Pump housing:	Cast iron EN-JL1040 ASTM A48-40 B																																																															
Impeller:	Stainless steel DIN W.-Nr. 1.4301 AISI 304																																																															
Range of ambient temperature:	-30 .. 60 °C																																																															
Maximum operating pressure:	16 bar																																																															
Flange standard:	DIN																																																															
Pipe connection:	DN 40																																																															
Pump inlet:	DN 40																																																															
Pump outlet:	DN 40																																																															
Pressure rating:	PN 16																																																															
(@):	320 mm																																																															
Flange size for motor:	FT100																																																															
Motor type:	80A																																																															
IE Efficiency class:	IE3																																																															
Rated power - P2:	0.75 kW																																																															
Power (P2) required by pump:	0.75 kW																																																															
Mains frequency:	50 Hz																																																															
Rated voltage:	3 x 220-240D/380-415Y V																																																															
Rated current:	3.30/1.90 A																																																															
Starting current:	580-620 %																																																															
Cos phi - power factor:	0.81-0.71																																																															
Rated speed:	2840-2870 rpm																																																															
Efficiency:	IE3 80,7%																																																															

Position	Qty.	Description
		Motor efficiency at full load: 80.7 % Motor efficiency at 3/4 load: 82.7 % Motor efficiency at 1/2 load: 81.7 % Number of poles: 2 Enclosure class (IEC 34-5): 55 Dust/Jetting Insulation class (IEC 85): F Others: Minimum efficiency index, MEI : 0.44 ErP status: EuP Standalone/Prod. Net weight: 27.5 kg Gross weight: 30 kg Shipping volume: 0.06 m ³

On request TP 40-190/2 A-F-A-BUBE 50 Hz

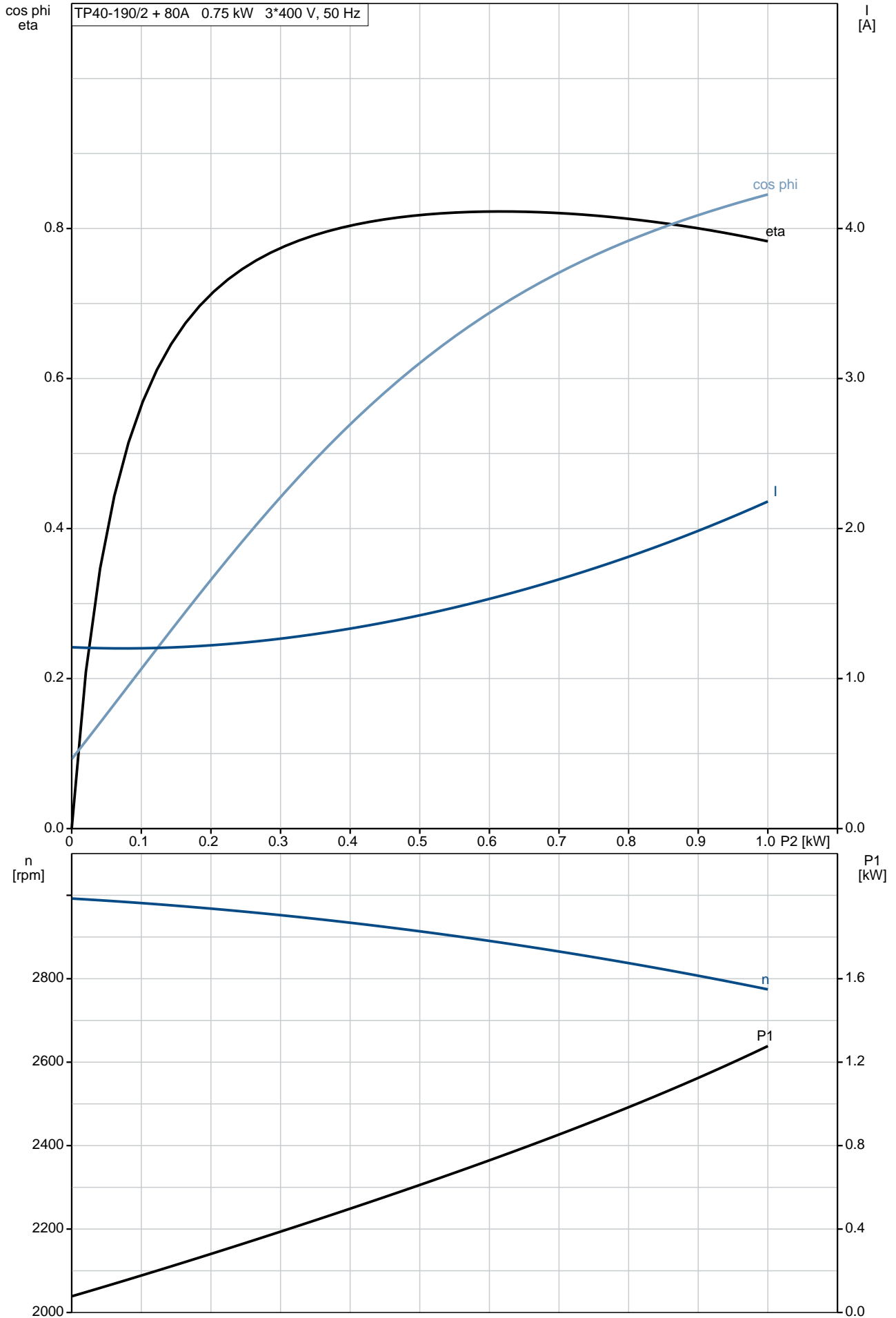


Description	Value
General information:	
Product name:	TP 40-190/2 A-F-A-BUBE
Product No:	On request
EAN number:	On request
Technical:	
Rated flow:	10.5 m ³ /h
Rated head:	13.2 m
Head max:	190 dm
Actual impeller diameter:	124 mm
Primary shaft seal:	BUBE
Curve tolerance:	ISO9906:2012 3B
Pump version:	A
Model:	A
Materials:	
Pump housing:	Cast iron EN-JL1040 ASTM A48-40 B
Impeller:	Stainless steel DIN W.-Nr. 1.4301 AISI 304
Material code:	A
Installation:	
Range of ambient temperature:	-30 .. 60 °C
Maximum operating pressure:	16 bar
Flange standard:	DIN
Pipe connection:	DN 40
Pump inlet:	DN 40
Pump outlet:	DN 40
Pressure rating:	PN 16
(@)	320 mm
Flange size for motor:	FT100
Connect code:	F
Liquid:	
Pumped liquid:	Water
Liquid temperature range:	0 .. 140 °C
Liquid temperature during operation:	20 °C
Density:	998.2 kg/m ³
Electrical data:	
Motor type:	80A
IE Efficiency class:	IE3
Rated power - P2:	0.75 kW
Power (P2) required by pump:	0.75 kW
Mains frequency:	50 Hz
Rated voltage:	3 x 220-240D/380-415Y V
Rated current:	3.30/1.90 A
Starting current:	580-620 %
Cos phi - power factor:	0.81-0.71
Rated speed:	2840-2870 rpm
Efficiency:	IE3 80,7%
Motor efficiency at full load:	80.7 %
Motor efficiency at 3/4 load:	82.7 %
Motor efficiency at 1/2 load:	81.7 %
Number of poles:	2
Enclosure class (IEC 34-5):	55 Dust/Jetting
Insulation class (IEC 85):	F
Motor protec:	NONE
Motor No:	85U05104
Others:	
Minimum efficiency index, MEI :	0.44
ErP status:	EuP Standalone/Prod.
Net weight:	27.5 kg
Gross weight:	30 kg
Shipping volume:	0.06 m ³

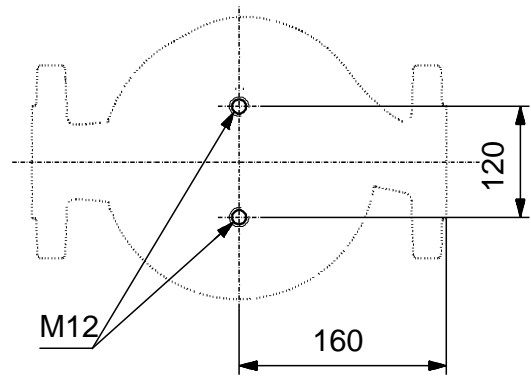
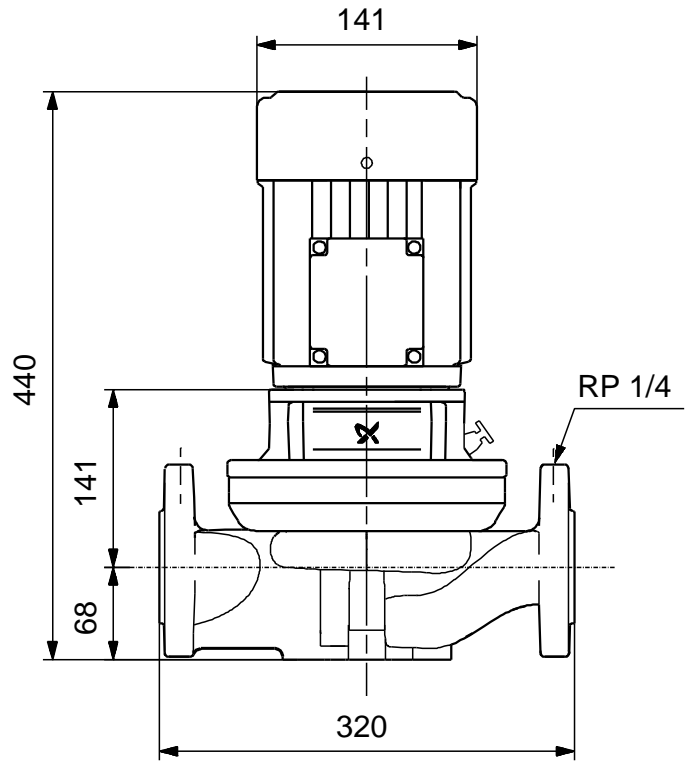
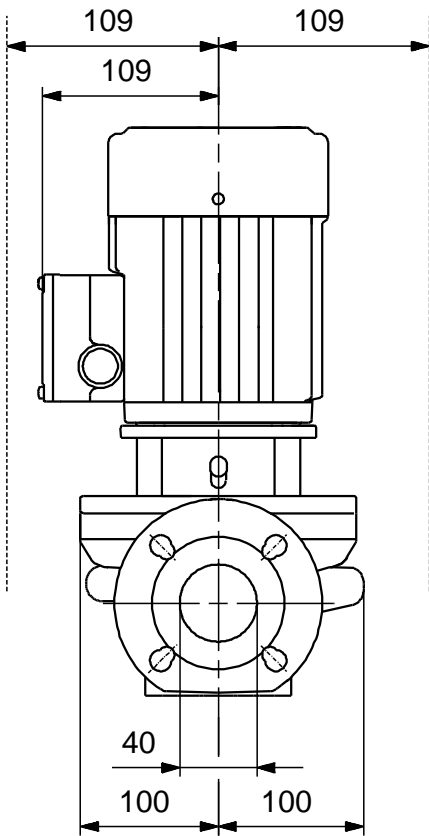


On request TP 40-190/2 A-F-A-BUBE 50 Hz

TP40-190/2 + 80A 0.75 kW 3*400 V, 50 Hz



On request TP 40-190/2 A-F-A-BUBE 50 Hz

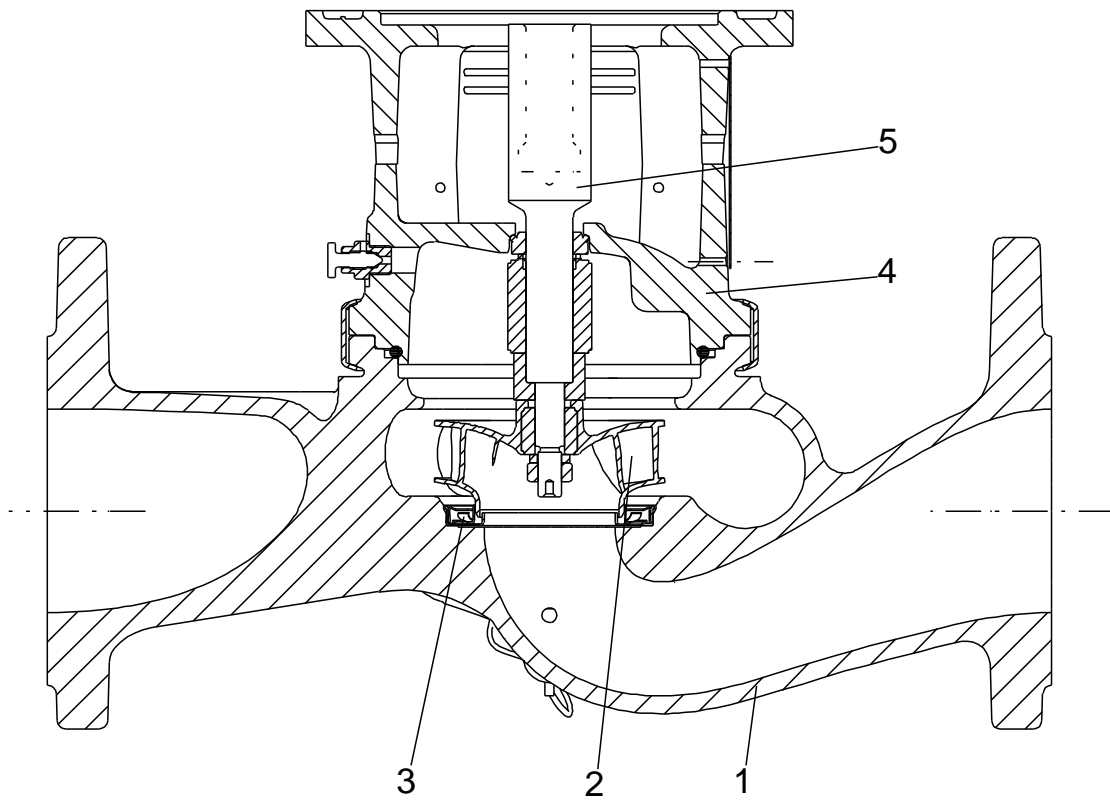


Note! All units are in [mm] unless others are stated.
Disclaimer: This simplified dimensional drawing does not show all details.

Exploded view



Sectional drawing (TM058200 for TPE2,TPE3)



TM058200

Exploded view (TM057026 for MGE model H/I)



Parts list TP 40-190/2, Product No. On request
Valid from 1.1.2011 (1152)

Pos	Description	Annotation	Données de classification	Référence	Quantité	Unité
+	Motor				1	pcs
-	Coupling cpl.				1	pcs
9	Hex socket head cap screw		Designation: DIN 912		4	
			Length (mm): 20			
			Thread: M6			
10	Shaft pin		Diameter: 5		1	
			Length (mm): 26			
10a	Coupling half				2	
-	Motor stool cpl.				1	pcs
2	Motor stool				1	
26	Hex head screw		Length (mm): 25		8	
			Thread: M10			
28	Hex head screw				4	
-	Pump housing cpl.				1	pcs
-	6 Pump housing				1	
					1	
45	Neck ring				1	
-	Coupling guard cpl.				1	pcs
7	Coupling guard				2	
7a	Pan head screw				4	
-	Shaft w/impeller cpl.				1	pcs
49	Impeller cpl.				1	
49b	Split cone				1	
49b	Split cone nut				1	
51	Pump shaft				1	
18	Air vent screw		Thread: 1/4"		1	pcs
19	Plug				2	pcs
72a	O-ring		Diameter: 154		1	pcs
			Material type: EPDM			
			Thickness: 4			
105	Shaft seal		Material type: EPDM		1	pcs

Disclaimer: The information about the Grundfos pump in this document may be outdated.

Data may be subject to alterations without further notice.

Please contact us to verify the data above is still accurate/up-to-date.

All information is copyright Grundfos.



info@lenntech.com

<https://www.lenntech.com>

tel. +31 152 610 900

fax. +31 152 616 289