

MMS8000 400/50 460/60 55kW SD Grundfos pump 96432097




Thank you for your interest in our products. Please contact us for more information, or visit our website

<https://www.lenntech.com/grundfos/MMS08/96432097/MMS-8000.html>

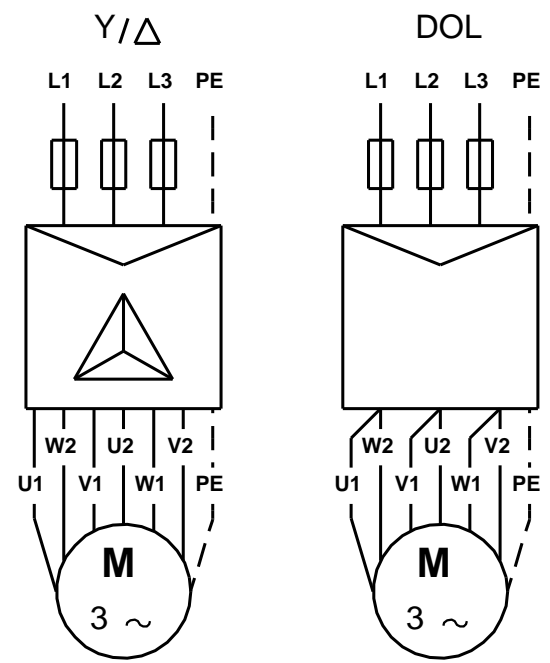
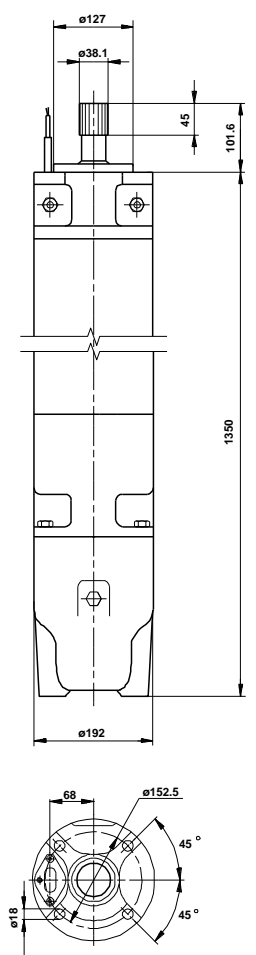
info@lenntech.com

tel. +31 152 610 900

fax. +31 152 616 289

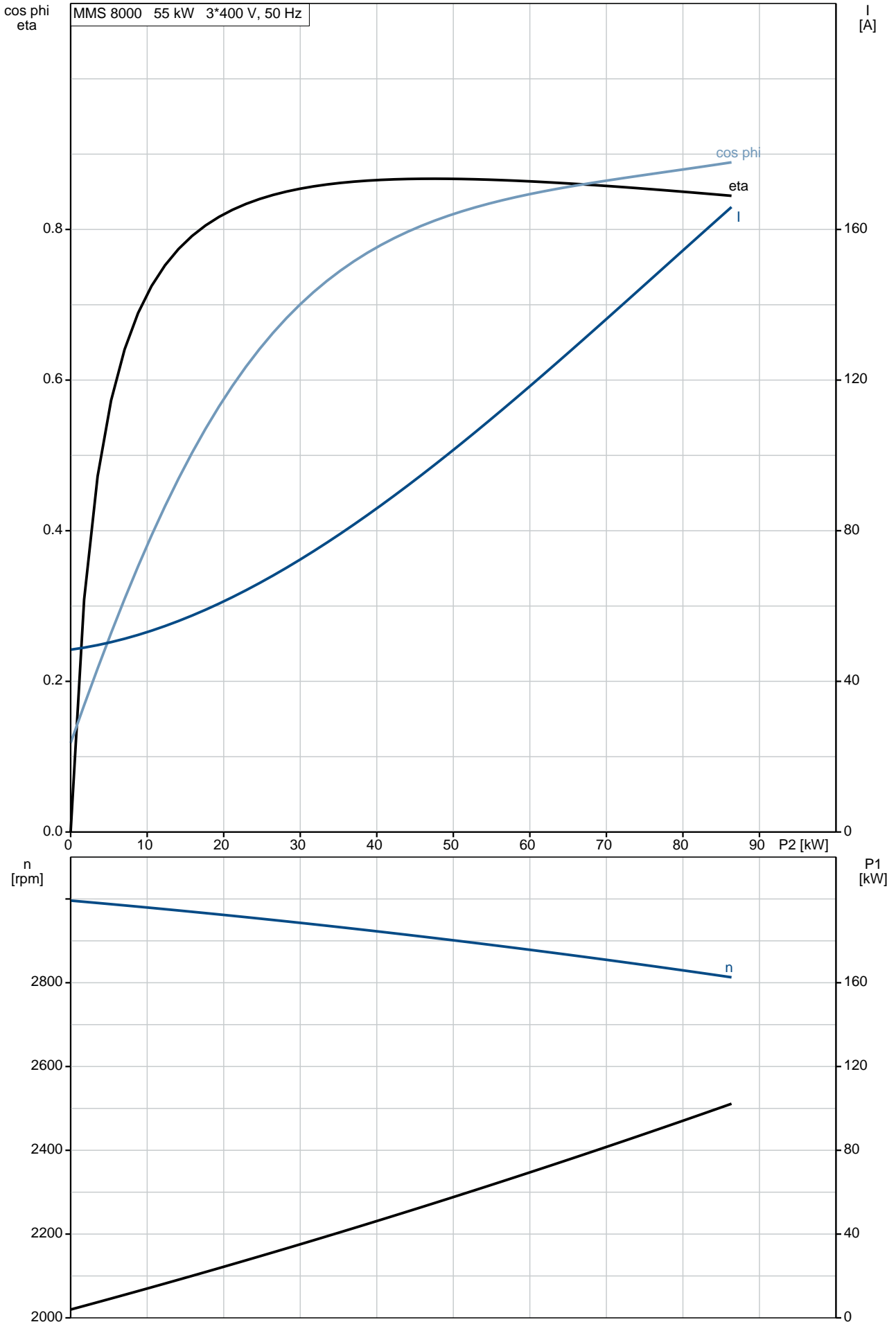
Position	Qty.	Description																																																										
	1	<p data-bbox="320 163 443 197">MMS 8000</p>  <p data-bbox="711 595 1193 618">Note! Product picture may differ from actual product</p> <p data-bbox="320 629 600 651">Product No.: On request</p> <p data-bbox="320 658 1398 707">The motor is a 3-phase motor of the wet wound rewindable type with sand shield, liquid-lubricated bearings and pressure equalizing diaphragm.</p> <p data-bbox="320 741 405 763">Liquid:</p> <table data-bbox="320 775 746 831"> <tr> <td>Max liquid t at 0.15 m/sec:</td> <td>25 °C</td> </tr> <tr> <td>Max liquid t at 0.5 m/sec:</td> <td>30 °C</td> </tr> </table> <p data-bbox="320 864 443 887">Technical:</p> <table data-bbox="320 898 847 954"> <tr> <td>Shaft seal for motor:</td> <td>CER/CARBON</td> </tr> <tr> <td>Motor version:</td> <td>T30</td> </tr> </table> <p data-bbox="320 987 437 1010">Materials:</p> <table data-bbox="320 1021 887 1099"> <tr> <td>Motor:</td> <td>Cast iron DIN W.-Nr. 0.6025 ASTM 35-40</td> </tr> </table> <p data-bbox="320 1133 459 1155">Installation:</p> <table data-bbox="320 1167 751 1189"> <tr> <td>Motor diameter:</td> <td>8 inch</td> </tr> </table> <p data-bbox="320 1223 496 1245">Electrical data:</p> <table data-bbox="320 1256 919 1872"> <tr> <td>Motor type:</td> <td>MMS8000</td> </tr> <tr> <td>Rated power - P2:</td> <td>55 kW</td> </tr> <tr> <td>Mains frequency:</td> <td>50 Hz</td> </tr> <tr> <td>Rated voltage:</td> <td>3 x 380-400-415 V</td> </tr> <tr> <td>Voltage tolerance:</td> <td>+6/-10 %</td> </tr> <tr> <td>Rated current:</td> <td>116-114-112 A</td> </tr> <tr> <td>Starting current:</td> <td>540-590-630 %</td> </tr> <tr> <td>Cos phi - power factor:</td> <td>0.88-0.85-0.83</td> </tr> <tr> <td>Rated speed:</td> <td>2890-2900-2910 rpm</td> </tr> <tr> <td>Rated full-load torque:</td> <td>182 Nm</td> </tr> <tr> <td>Locked-rotor torque:</td> <td>170-190-210 %</td> </tr> <tr> <td>Breakdown torque:</td> <td>270-310-330 %</td> </tr> <tr> <td>Moment of inertia:</td> <td>0.0446 kg m²</td> </tr> <tr> <td>Motor efficiency at full load:</td> <td>86 %</td> </tr> <tr> <td>Motor efficiency at 3/4 load:</td> <td>86 %</td> </tr> <tr> <td>Motor efficiency at 1/2 load:</td> <td>84 %</td> </tr> <tr> <td>Start. method:</td> <td>star/delta</td> </tr> <tr> <td>Enclosure class (IEC 34-5):</td> <td>IP58</td> </tr> <tr> <td>Built-in temp. transmitter:</td> <td>no</td> </tr> <tr> <td>Winding resistance:</td> <td>0.171 ohm</td> </tr> <tr> <td>Windings:</td> <td>PVC</td> </tr> </table> <p data-bbox="320 1906 411 1928">Others:</p> <table data-bbox="320 1939 783 1995"> <tr> <td>Net weight:</td> <td>192 kg</td> </tr> <tr> <td>Shipping volume:</td> <td>0.187 m³</td> </tr> </table>	Max liquid t at 0.15 m/sec:	25 °C	Max liquid t at 0.5 m/sec:	30 °C	Shaft seal for motor:	CER/CARBON	Motor version:	T30	Motor:	Cast iron DIN W.-Nr. 0.6025 ASTM 35-40	Motor diameter:	8 inch	Motor type:	MMS8000	Rated power - P2:	55 kW	Mains frequency:	50 Hz	Rated voltage:	3 x 380-400-415 V	Voltage tolerance:	+6/-10 %	Rated current:	116-114-112 A	Starting current:	540-590-630 %	Cos phi - power factor:	0.88-0.85-0.83	Rated speed:	2890-2900-2910 rpm	Rated full-load torque:	182 Nm	Locked-rotor torque:	170-190-210 %	Breakdown torque:	270-310-330 %	Moment of inertia:	0.0446 kg m ²	Motor efficiency at full load:	86 %	Motor efficiency at 3/4 load:	86 %	Motor efficiency at 1/2 load:	84 %	Start. method:	star/delta	Enclosure class (IEC 34-5):	IP58	Built-in temp. transmitter:	no	Winding resistance:	0.171 ohm	Windings:	PVC	Net weight:	192 kg	Shipping volume:	0.187 m ³
Max liquid t at 0.15 m/sec:	25 °C																																																											
Max liquid t at 0.5 m/sec:	30 °C																																																											
Shaft seal for motor:	CER/CARBON																																																											
Motor version:	T30																																																											
Motor:	Cast iron DIN W.-Nr. 0.6025 ASTM 35-40																																																											
Motor diameter:	8 inch																																																											
Motor type:	MMS8000																																																											
Rated power - P2:	55 kW																																																											
Mains frequency:	50 Hz																																																											
Rated voltage:	3 x 380-400-415 V																																																											
Voltage tolerance:	+6/-10 %																																																											
Rated current:	116-114-112 A																																																											
Starting current:	540-590-630 %																																																											
Cos phi - power factor:	0.88-0.85-0.83																																																											
Rated speed:	2890-2900-2910 rpm																																																											
Rated full-load torque:	182 Nm																																																											
Locked-rotor torque:	170-190-210 %																																																											
Breakdown torque:	270-310-330 %																																																											
Moment of inertia:	0.0446 kg m ²																																																											
Motor efficiency at full load:	86 %																																																											
Motor efficiency at 3/4 load:	86 %																																																											
Motor efficiency at 1/2 load:	84 %																																																											
Start. method:	star/delta																																																											
Enclosure class (IEC 34-5):	IP58																																																											
Built-in temp. transmitter:	no																																																											
Winding resistance:	0.171 ohm																																																											
Windings:	PVC																																																											
Net weight:	192 kg																																																											
Shipping volume:	0.187 m ³																																																											

Description	Value
General information:	
Product name:	MMS 8000
Product No:	On request
EAN number:	On request
Technical:	
Shaft seal for motor:	CER/CARBON
Motor version:	T30
Materials:	
Motor:	Cast iron
	DIN W.-Nr. 0.6025
	ASTM 35-40
Installation:	
Motor diameter:	8 inch
Liquid:	
Max liquid t at 0.15 m/sec:	25 °C
Max liquid t at 0.5 m/sec:	30 °C
Electrical data:	
Motor type:	MMS8000
Rated power - P2:	55 kW
Mains frequency:	50 Hz
Rated voltage:	3 x 380-400-415 V
Voltage tolerance:	+6/-10 %
Rated current:	116-114-112 A
Starting current:	540-590-630 %
Cos phi - power factor:	0.88-0.85-0.83
Rated speed:	2890-2900-2910 rpm
Rated full-load torque:	182 Nm
Locked-rotor torque:	170-190-210 %
Breakdown torque:	270-310-330 %
Moment of inertia:	0.0446 kg m ²
Axial load max:	5000 kg
Motor efficiency at full load:	86 %
Motor efficiency at 3/4 load:	86 %
Motor efficiency at 1/2 load:	84 %
Start. method:	star/delta
Enclosure class (IEC 34-5):	IP58
Motor protec:	NONE
Thermal protec:	external
Built-in temp. transmitter:	no
Winding resistance:	0.171 ohm
Windings:	PVC
Others:	
Net weight:	192 kg
Shipping volume:	0.187 m ³

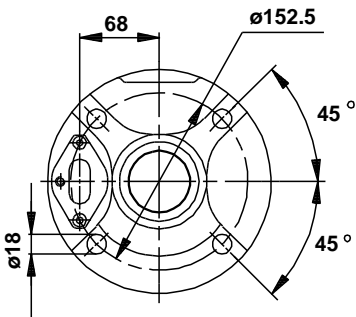
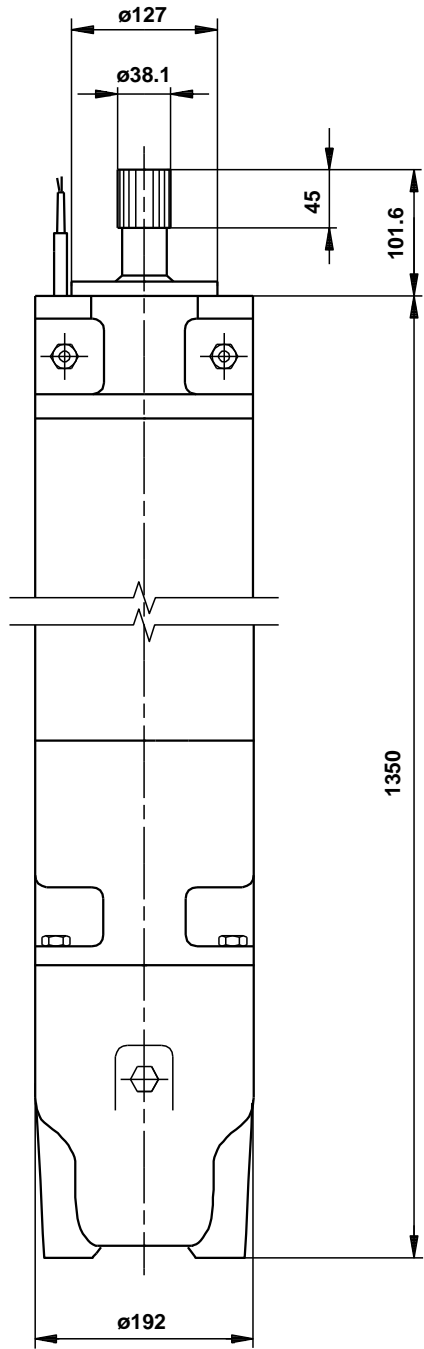


U1, W2	Brown
V1, U2	Black
W1, V2	Grey

On request MMS 8000 50 Hz

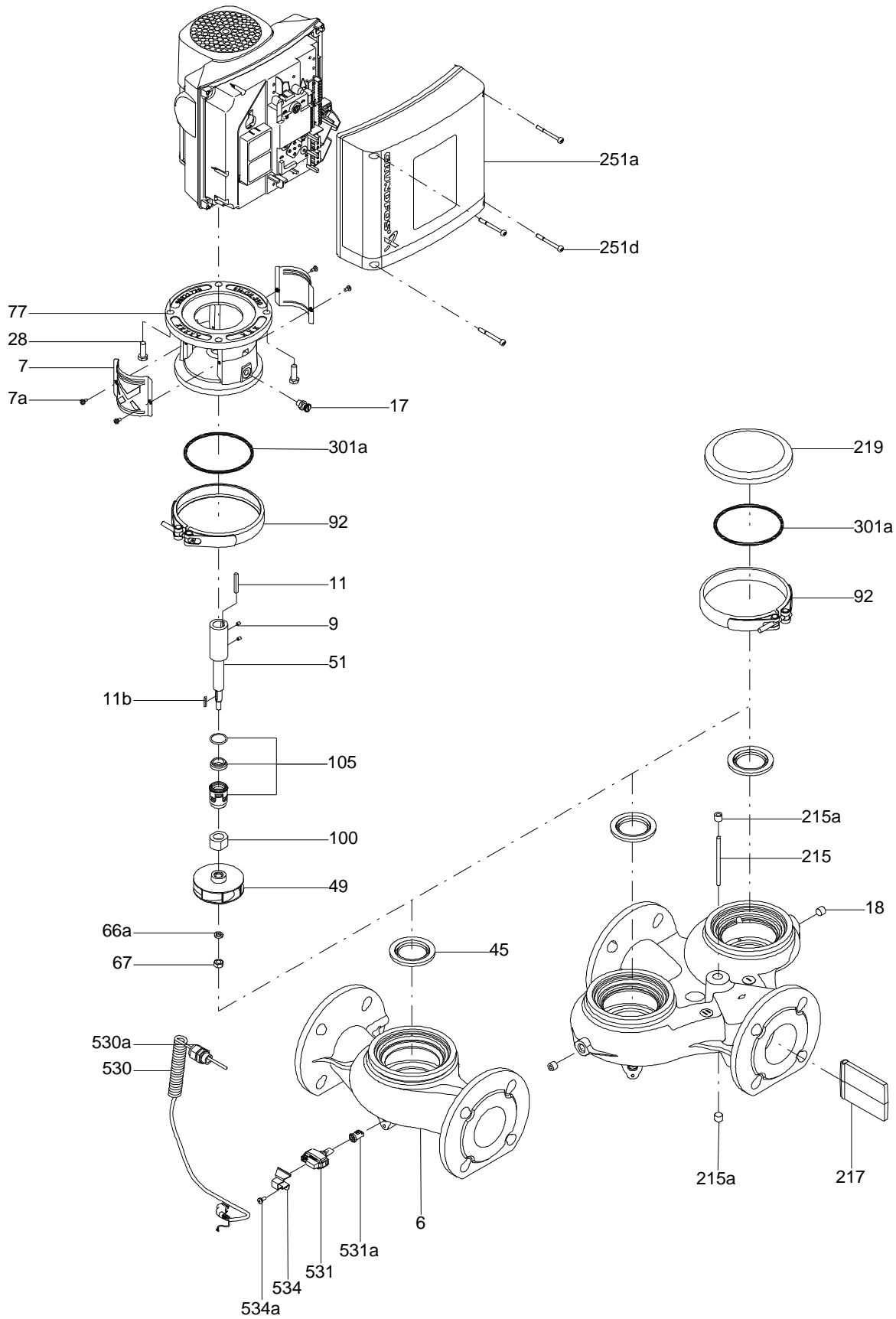


On request MMS 8000 50 Hz

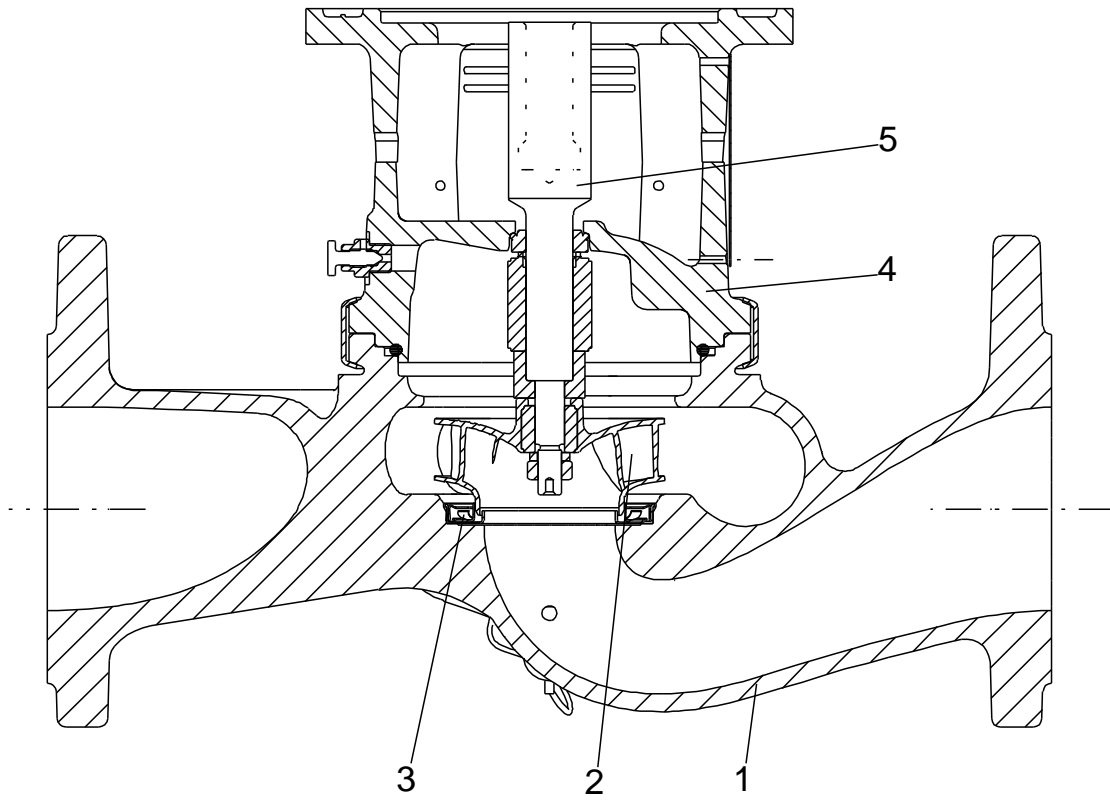


Note! All units are in [mm] unless others are stated.
Disclaimer: This simplified dimensional drawing does not show all details.

Exploded view

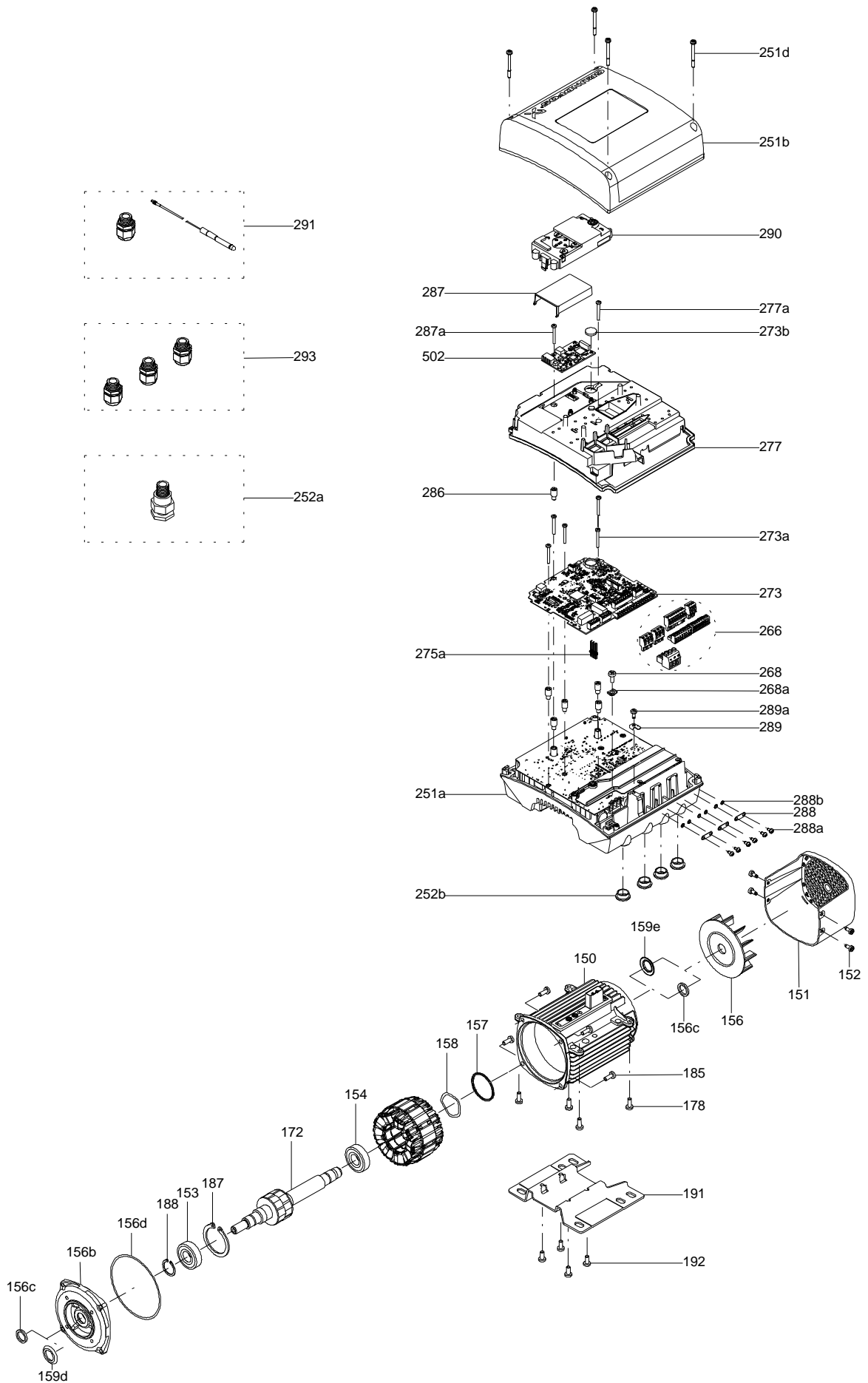


Sectional drawing (TM058200 for TPE2,TPE3)



TM058200

Exploded view (TM057026 for MGE model H/I)



Parts list MMS 8000, Product No. On request
Valid from 23.2.2004 (0409)

Pos	Description	Annotation	Données de classification	Référence	Quantité	Unité
	Stator				1	pcs
-	Bearing housing, upper				1	pcs
204	Bearing ring				2	
205	Bearing housing, upper				1	
-	Bearing bracket, lower				1	pcs
204	Bearing ring				2	
236	Bearing housing, lower				1	
242	Upthrust spacer				1	
242a	Hex socket head cap screw				4	
202	Shaft w/rotor				1	pcs
202a	Key				1	pcs
203	Thrust bearing part stationary				1	pcs
206	Thrust bearing part, rotating				1	pcs
212	Diaphragm				1	pcs
213	End shield				1	pcs
214	Washer		Internal diameter: 17 Outer diameter: 27		4	pcs
214a	Nut		Thread: M16		4	pcs
215	Stud		Length (mm): 35 Thread: M16		4	pcs
215	Socket set screw				3	pcs
216	Washer		Designation: M10 Internal diameter: 22,5 Outer diameter: 46		1	pcs
216a	Washer		Internal diameter: 35 Outer diameter: 45 Thickness: 0.2		1	pcs
216a	Washer		Internal diameter: 35 Outer diameter: 45 Thickness: 0.3		1	pcs
216a	Diverting disc				2	pcs
216b	Hex socket countersunk screw		Designation: ALLEN SCREW Length (mm): 16 Thread: M10		1	pcs
220	Motor cable		Length (M): 8		6	pcs
222a	Air vent screw				1	pcs
222b	Washer				2	pcs
223a	Plug				1	pcs
224	O-ring		Diameter: 164.7 Thickness: 3.5		2	pcs
226	Mechanical seal		Material type: CERAMIC/CARBON		1	pcs
227	Seal ring				1	pcs
228	Lock washer				1	pcs
229	Sand slinger				1	pcs
230a	Hex head screw				1	pcs
230b	Lock washer		Internal diameter: 8,4 Outer diameter: 14 Thickness: 1,6		1	pcs
230c	Plate				1	pcs
234	Gasket				2	pcs
235	Intermediate housing				1	pcs
235a	Socket set screw		Length (mm): 10 Thread: M8		2	pcs
237	Stud		Length (mm): 35 Thread: M16		4	pcs
238	Washer		Internal diameter: 17 Outer diameter: 27		4	pcs
238a	Nut		Thread: M16		4	pcs
247	Hex socket head cap screw				1	pcs

Pos	Description	Annotation	Données de classification	Référence	Quantité	Unité
248	Hex socket head cap screw		Designation: ALLEN A4 Length (mm): 20 Thread: M8		4	pcs
250	Flange, cable gland				1	pcs
250a	Grommet				1	pcs
250b	Cable ring				4	pcs
250c	Ring				2	pcs
251	Flange, cable gland				1	pcs
251a	Grommet				1	pcs

Disclaimer: The information about the Grundfos pump in this document may be outdated.

Data may be subject to alterations without further notice.

Please contact us to verify the data above is still accurate/up-to-date.

All information is copyright Grundfos.



info@lenntech.com

<https://www.lenntech.com>

tel. +31 152 610 900

fax. +31 152 616 289