

## TP 100-260/4 A-F-A-DBUE 3x400D/690Y 50Hz Grundfos pump 96162080




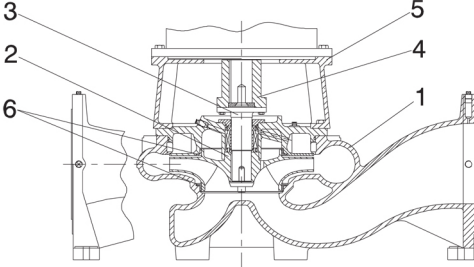
Thank you for your interest in our products. Please contact us for more information, or visit our website

<https://www.lenntech.com/grundfos/TP000/96162080/TP-100-260-4-A-F-A-DBUE.html>

[info@lenntech.com](mailto:info@lenntech.com)

tel. +31 152 610 900

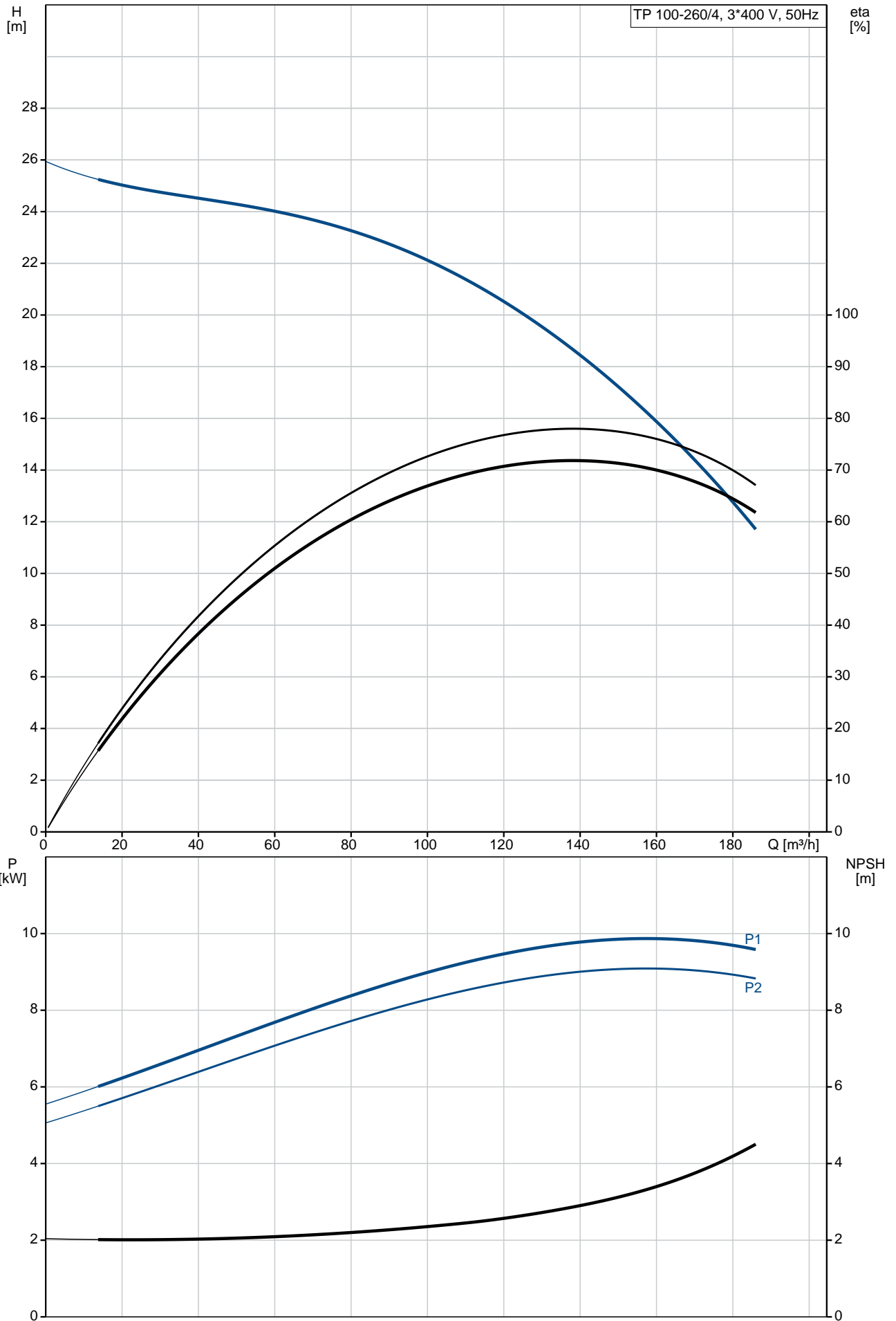
fax. +31 152 616 289

Position	Qty.	Description
	1	<p data-bbox="322 163 625 194"><b>TP 100-260/4 A-F-A-DBUE</b></p>  <p data-bbox="322 483 600 515">Product No.: On request</p> <p data-bbox="322 544 1430 622">Single-stage, close-coupled, volute pump with in-line suction and discharge ports. The pump is of the top-pull-out design, i.e. the power head (motor, pump head and impeller) can be removed for maintenance or service while the pump housing remains in the pipework.</p> <p data-bbox="322 629 1398 680">The pump is fitted with a balanced O-ring seal. The shaft seal is according to EN 12756. Pipework connection is via PN 25 DIN flanges (EN 1092-2 and ISO 7005-2).</p> <p data-bbox="322 687 951 719">The pump is fitted with a fan-cooled asynchronous motor.</p> <p data-bbox="322 748 639 779"><b>Further product details</b></p> <p data-bbox="322 786 403 817"><b>Pump</b></p> <p data-bbox="322 824 1257 855">Pump housing and pump head are electrocoated to improve the corrosion resistance.</p> <p data-bbox="322 862 584 893">Electrocoating includes:</p> <ol data-bbox="322 900 810 994" style="list-style-type: none"> <li>1) Alkaline-based cleaning.</li> <li>2) Pretreatment with zinc phosphate coating.</li> <li>3) Cathodic electrocoating (epoxy).</li> <li>4) Curing of paint film at 200-250 °C.</li> </ol>  <ol data-bbox="322 1328 509 1503" style="list-style-type: none"> <li>1: Pump housing</li> <li>2: Impeller</li> <li>3: Pump shaft</li> <li>4: Coupling</li> <li>5: Motor stool</li> <li>6: Wear rings</li> </ol> <p data-bbox="322 1536 1461 1588">The pump housing is provided with a replaceable brass neck ring to reduce the amount of liquid running from the outlet side of the impeller to the inlet side. The impeller is secured to the shaft with a nut.</p> <p data-bbox="322 1650 1458 1760">The pump is fitted with a balanced O-ring seal. Due to the balancing, this seal type is suitable for high-pressure applications. This seal type is excellent for high-viscosity, dirt- and fibre-containing liquids due to the spring location on the atmospheric side. The seal features a rigid torque-transmission design.</p> <p data-bbox="322 1767 1086 1823">Primary seal:</p> <ul data-bbox="357 1771 1086 1823" style="list-style-type: none"> <li>• Rotating seal ring material: carbon graphite, resin-impregnated</li> <li>• Stationary seat material: tungsten carbide (WC)</li> </ul> <p data-bbox="322 1830 1430 1926">This is a widely used material pairing. If the pumped liquid contains particles, wear on the seal faces must be expected. Due to the favourable lubricating properties of carbon graphite, the seal is suitable for use even under poor lubricating conditions, such as hot water. However, under such conditions, wear on the carbon graphite face reduces seal life.</p> <p data-bbox="322 1939 1219 1995">Secondary seal material: EPDM (ethylene-propylene rubber) EPDM has excellent resistance to hot water. EPDM is not suitable for mineral oils.</p> <p data-bbox="322 2029 1445 2080">A circulation of liquid through the duct of the air vent screw ensures lubrication and cooling of the shaft seal.</p>

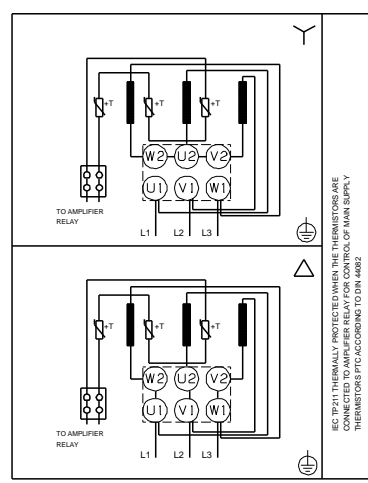
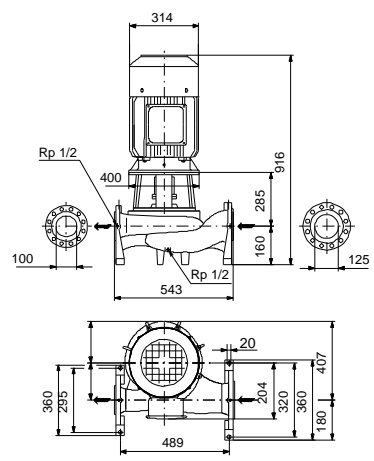
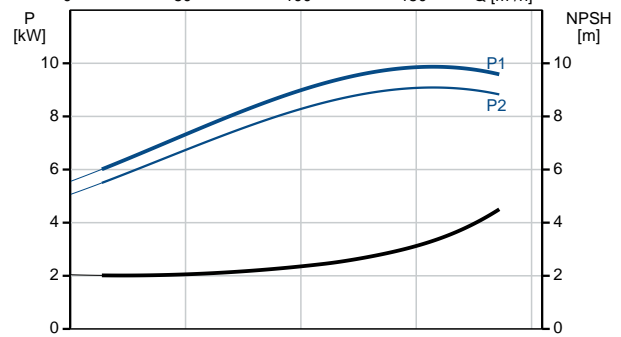
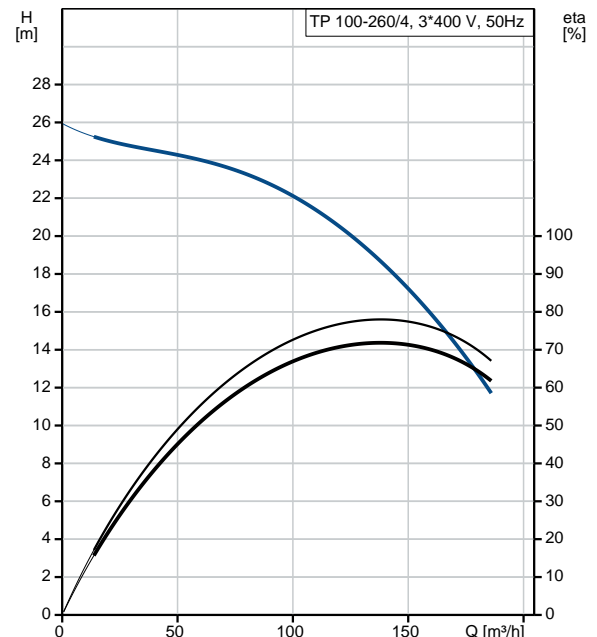
Position	Qty.	Description
		<p>The flanges have tapings for mounting of pressure gauges.</p> <p>The motor stool forms connection between the pump housing and the motor, and is equipped with a manual air vent screw for venting of the pump housing and the shaft seal chamber. The sealing between motor stool and pump housing is an O-ring.</p> <p>The central part of the motor stool is provided with guards for protection against the shaft and coupling. The pump shaft is fastened directly on the motor shaft with key and set screws.</p> <p><b>Motor</b></p> <p>The motor is a totally enclosed, fan-cooled motor with principal dimensions to IEC and DIN standards. Electrical tolerances comply with IEC 60034.</p> <p>The motor is flange-mounted with free-hole flange (FF). Motor-mounting designation in accordance with IEC 60034-7: IM B 5, IM V 1 (Code I) / IM 3001, IM 3011 (Code II).</p> <p>The motor efficiency is classified as IE3 in accordance with IEC 60034-30-1. The motor has thermistors (PTC sensors) in the windings in accordance with DIN 44081/DIN 44082. The protection reacts to both slow- and quick-rising temperatures, e.g. constant overload and stalled conditions.</p> <p>Thermal switches must be connected to an external control circuit in a way which ensures that the automatic reset cannot cause accidents. The motors must be connected to a motor-protective circuit breaker according to local regulations.</p> <p>The motor can be connected to a variable speed drive for adjustment of pump performance to any duty point. Grundfos CUE offers a range of variable speed drives. Please find more information in Grundfos Product Center.</p> <p><b>Technical data</b></p> <p><b>Liquid:</b> Pumped liquid: Water Liquid temperature range: 0 .. 150 °C Liquid temperature during operation: 20 °C Density: 998.2 kg/m<sup>3</sup></p> <p><b>Technical:</b> Rated flow: 140 m<sup>3</sup>/h Rated head: 18 m Actual impeller diameter: 275 mm Primary shaft seal: DBUE Curve tolerance: ISO9906:2012 3B</p> <p><b>Materials:</b> Pump housing: Ductile cast iron EN-JS1020 ASTM A 395 Impeller: Ductile cast iron EN-JS1030 ASTM A 536 60-40-18</p> <p><b>Installation:</b> Range of ambient temperature: -30 .. 60 °C Maximum operating pressure: 25 bar Flange standard: DIN Pipe connection: DN 125 / DN 100 Pump inlet: DN 125 Pump outlet: DN 100 Pressure rating: PN 25 (@): 543 mm Flange size for motor: FF300</p> <p><b>Electrical data:</b> Motor type: 160MA IE Efficiency class: IE3</p>

Position	Qty.	Description
		<p>Rated power - P2: 11 kW</p> <p>Power (P2) required by pump: 11 kW</p> <p>Mains frequency: 50 Hz</p> <p>Rated voltage: 3 x 380-415 D/660-690 Y V</p> <p>Rated current: 21,2-20,4/12,2-12,0 A</p> <p>Starting current: 710-810 %</p> <p>Cos phi - power factor: 0.86-0.81</p> <p>Rated speed: 1470-1475 rpm</p> <p>Efficiency: IE3 91,4%</p> <p>Motor efficiency at full load: 91.4 %</p> <p>Motor efficiency at 3/4 load: 92.1 %</p> <p>Motor efficiency at 1/2 load: 91.6 %</p> <p>Number of poles: 4</p> <p>Enclosure class (IEC 34-5): 55 Dust/Jetting</p> <p>Insulation class (IEC 85): F</p> <p><b>Others:</b></p> <p>Net weight: 241 kg</p> <p>Gross weight: 271 kg</p> <p>Shipping volume: 0.724 m<sup>3</sup></p>

# On request TP 100-260/4 A-F-A-DBUE 50 Hz

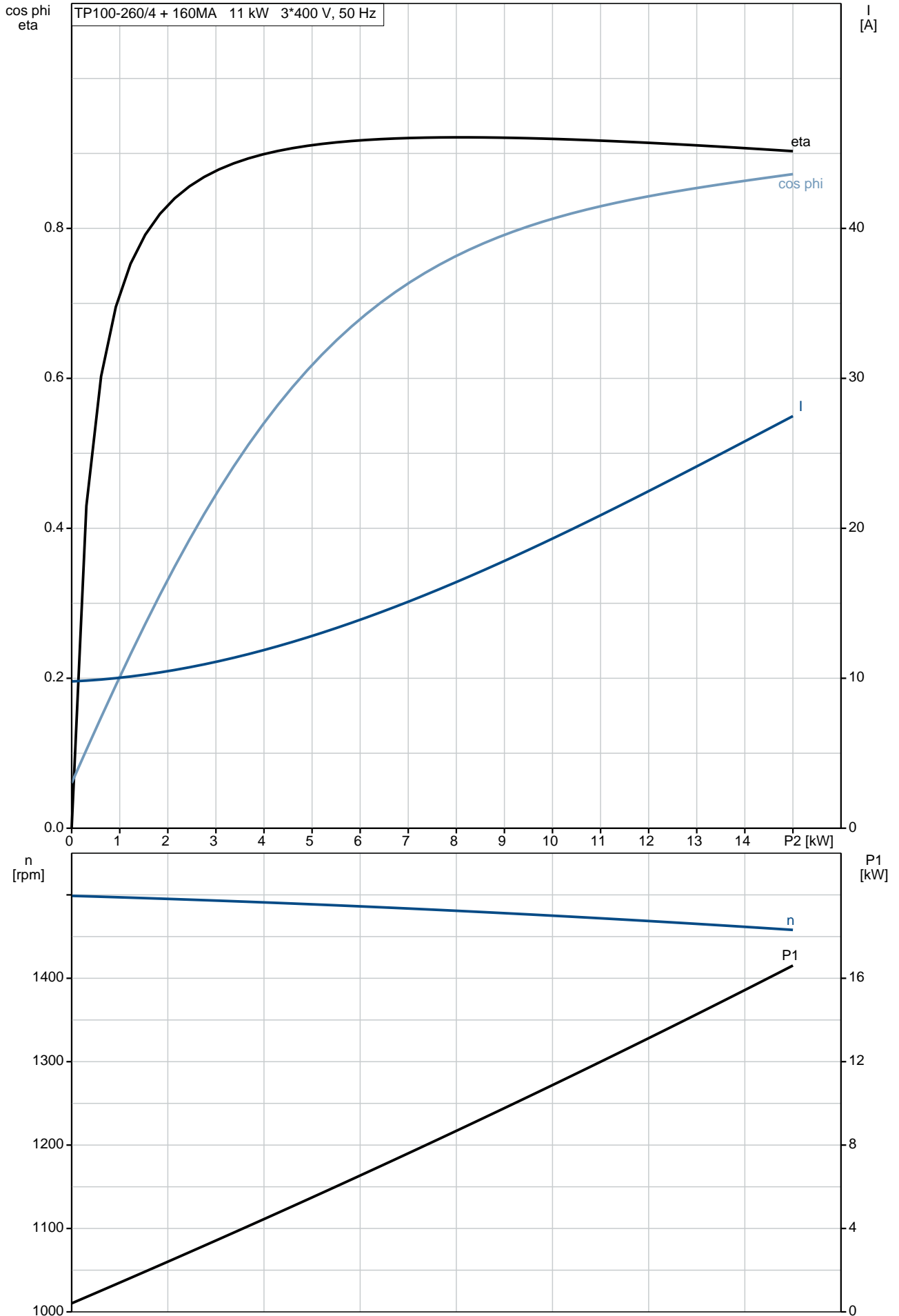


Description	Value
<b>General information:</b>	
Product name:	TP 100-260/4 A-F-A-DBUE
Product No:	On request
EAN number:	On request
<b>Technical:</b>	
Rated flow:	140 m <sup>3</sup> /h
Rated head:	18 m
Head max:	260 dm
Actual impeller diameter:	275 mm
Primary shaft seal:	DBUE
Curve tolerance:	ISO9906:2012 3B
Pump version:	A
Model:	A
<b>Materials:</b>	
Pump housing:	Ductile cast iron EN-JS1020 ASTM A 395
Impeller:	Ductile cast iron EN-JS1030 ASTM A 536 60-40-18
Material code:	A
<b>Installation:</b>	
Range of ambient temperature:	-30 .. 60 °C
Maximum operating pressure:	25 bar
Flange standard:	DIN
Pipe connection:	DN 125 / DN 100
Pump inlet:	DN 125
Pump outlet:	DN 100
Pressure rating:	PN 25
(@)	543 mm
Flange size for motor:	FF300
Connect code:	F
<b>Liquid:</b>	
Pumped liquid:	Water
Liquid temperature range:	0 .. 150 °C
Liquid temperature during operation:	20 °C
Density:	998.2 kg/m <sup>3</sup>
<b>Electrical data:</b>	
Motor type:	160MA
IE Efficiency class:	IE3
Rated power - P2:	11 kW
Power (P2) required by pump:	11 kW
Mains frequency:	50 Hz
Rated voltage:	3 x 380-415 D/660-690 Y V
Rated current:	21,2-20,4/12,2-12,0 A
Starting current:	710-810 %
Cos phi - power factor:	0.86-0.81
Rated speed:	1470-1475 rpm
Efficiency:	IE3 91,4%
Motor efficiency at full load:	91.4 %
Motor efficiency at 3/4 load:	92.1 %
Motor efficiency at 1/2 load:	91.6 %
Number of poles:	4
Enclosure class (IEC 34-5):	55 Dust/Jetting
Insulation class (IEC 85):	F
Motor protec:	PTC
Motor No:	87420031
<b>Others:</b>	
Net weight:	241 kg
Gross weight:	271 kg
Shipping volume:	0.724 m <sup>3</sup>

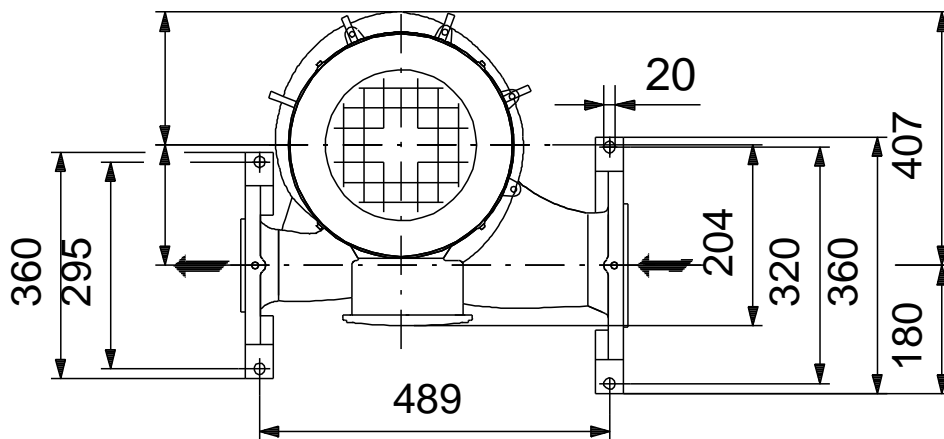
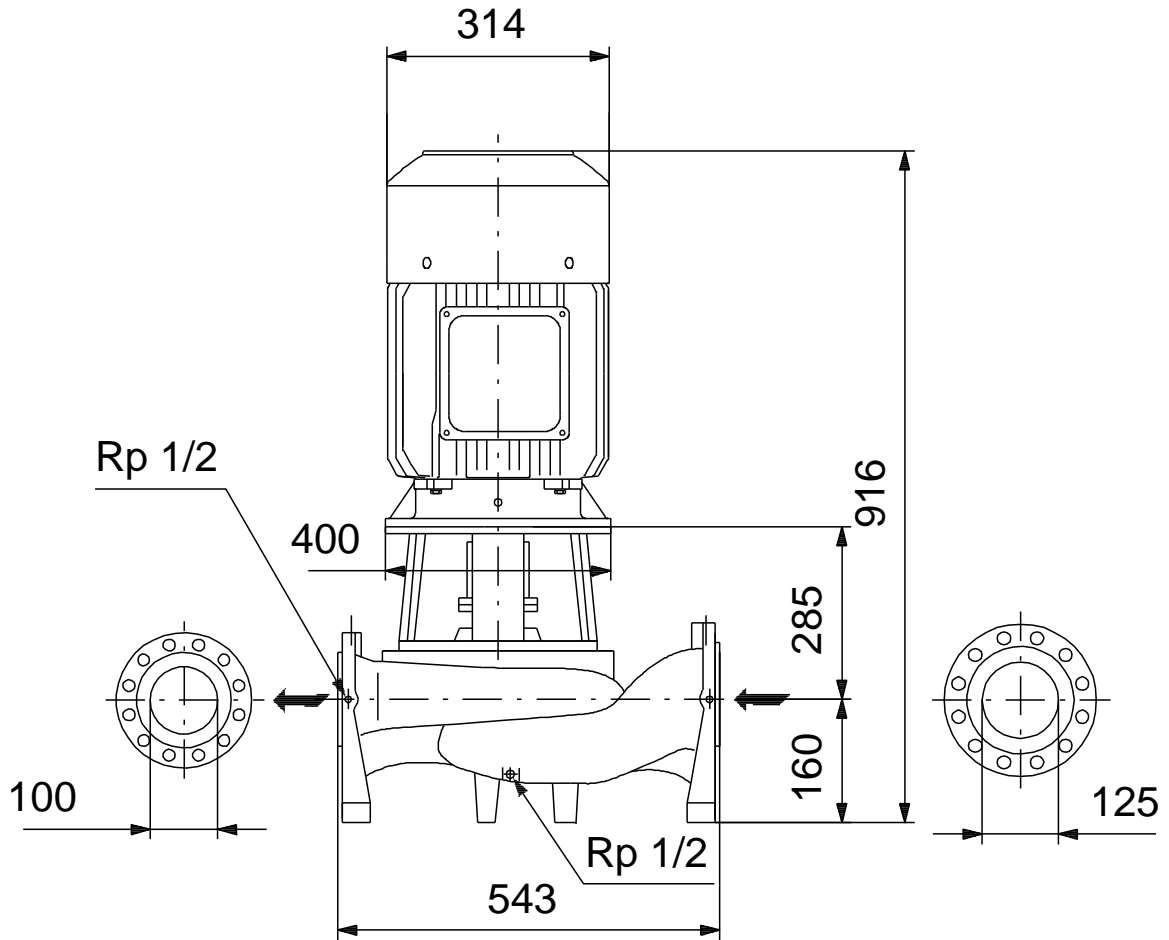


IEC TP211 THERMALLY PROTECTED WHEN THE THERMISTORS ARE CONNECTED TO AMPLIFIER RELAY FOR CONTROL OF MAIN SUPPLY THERMISTORS ARE CONNECTED TO GROUND TO UN 400V.

# On request TP 100-260/4 A-F-A-DBUE 50 Hz



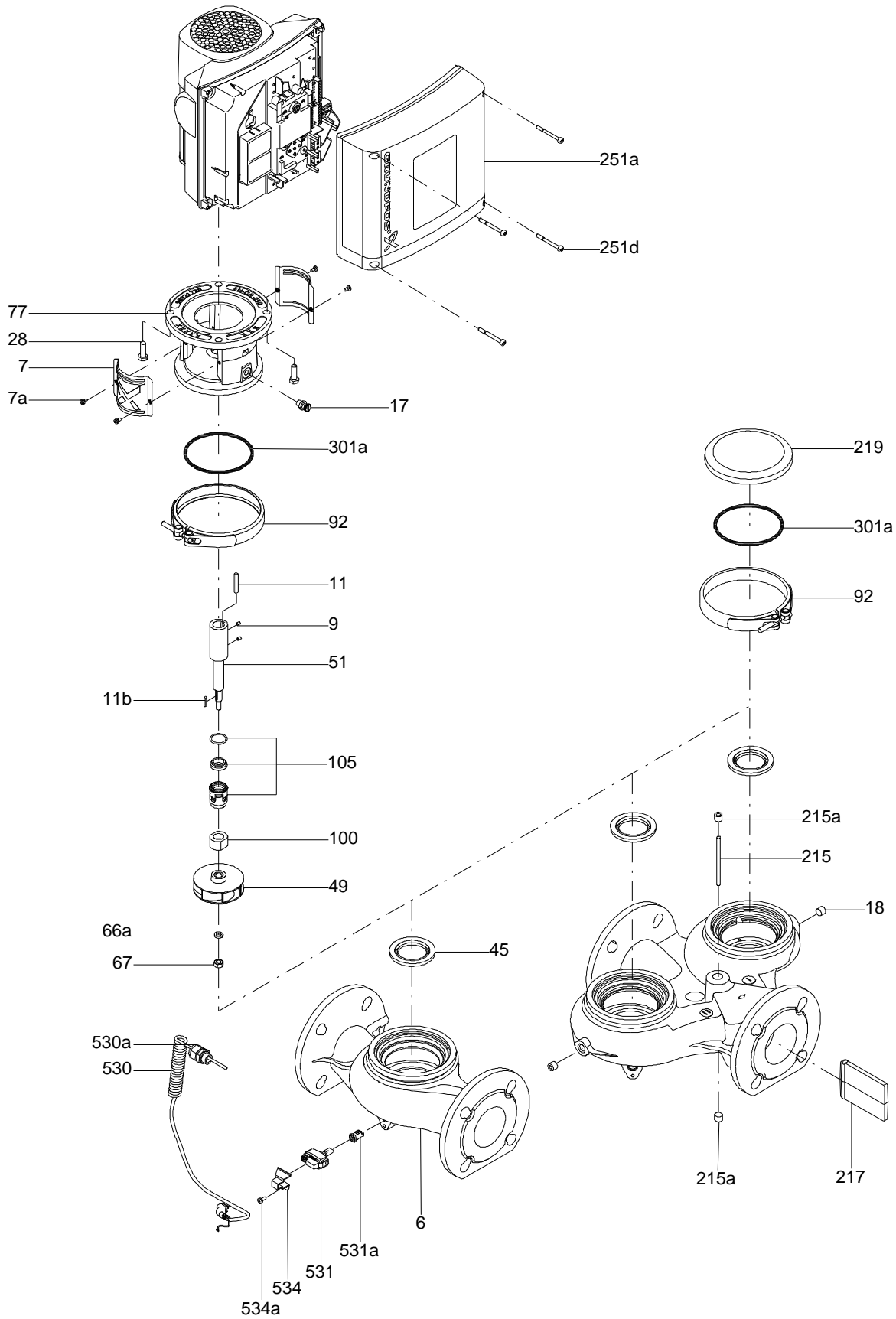
**On request TP 100-260/4 A-F-A-DBUE 50 Hz**



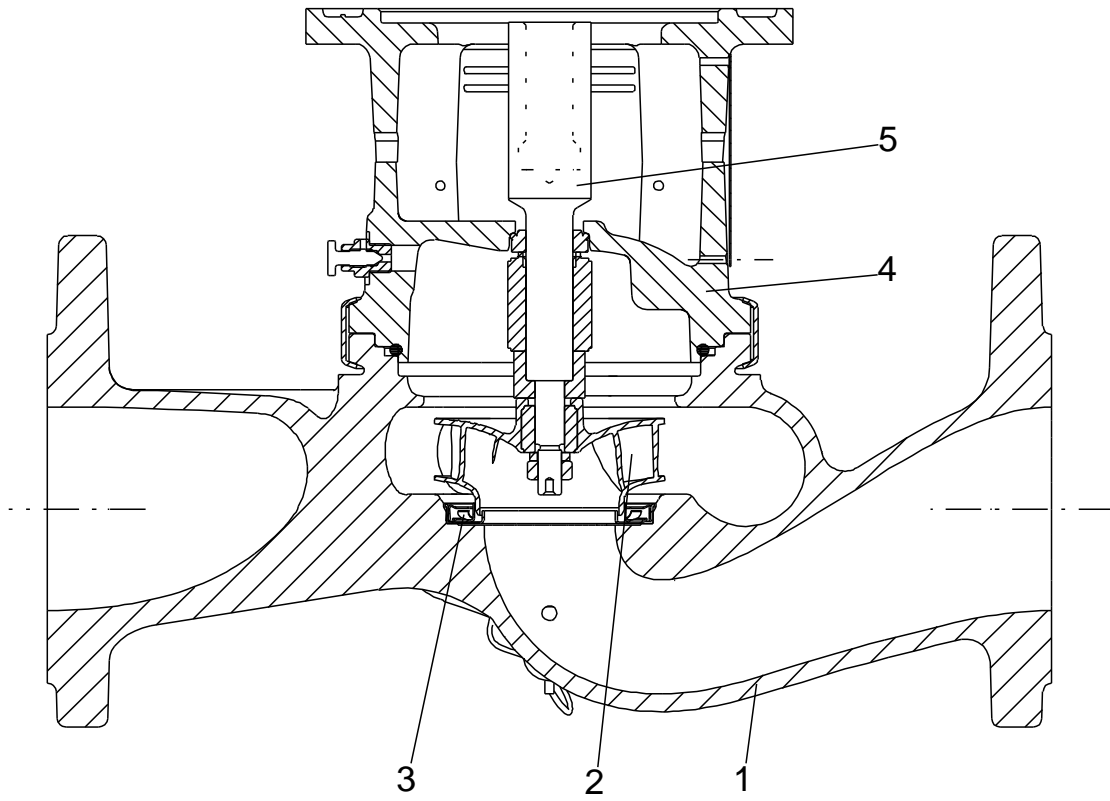
Note! All units are in [mm] unless others are stated.  
Disclaimer: This simplified dimensional drawing does not show all details.



Exploded view

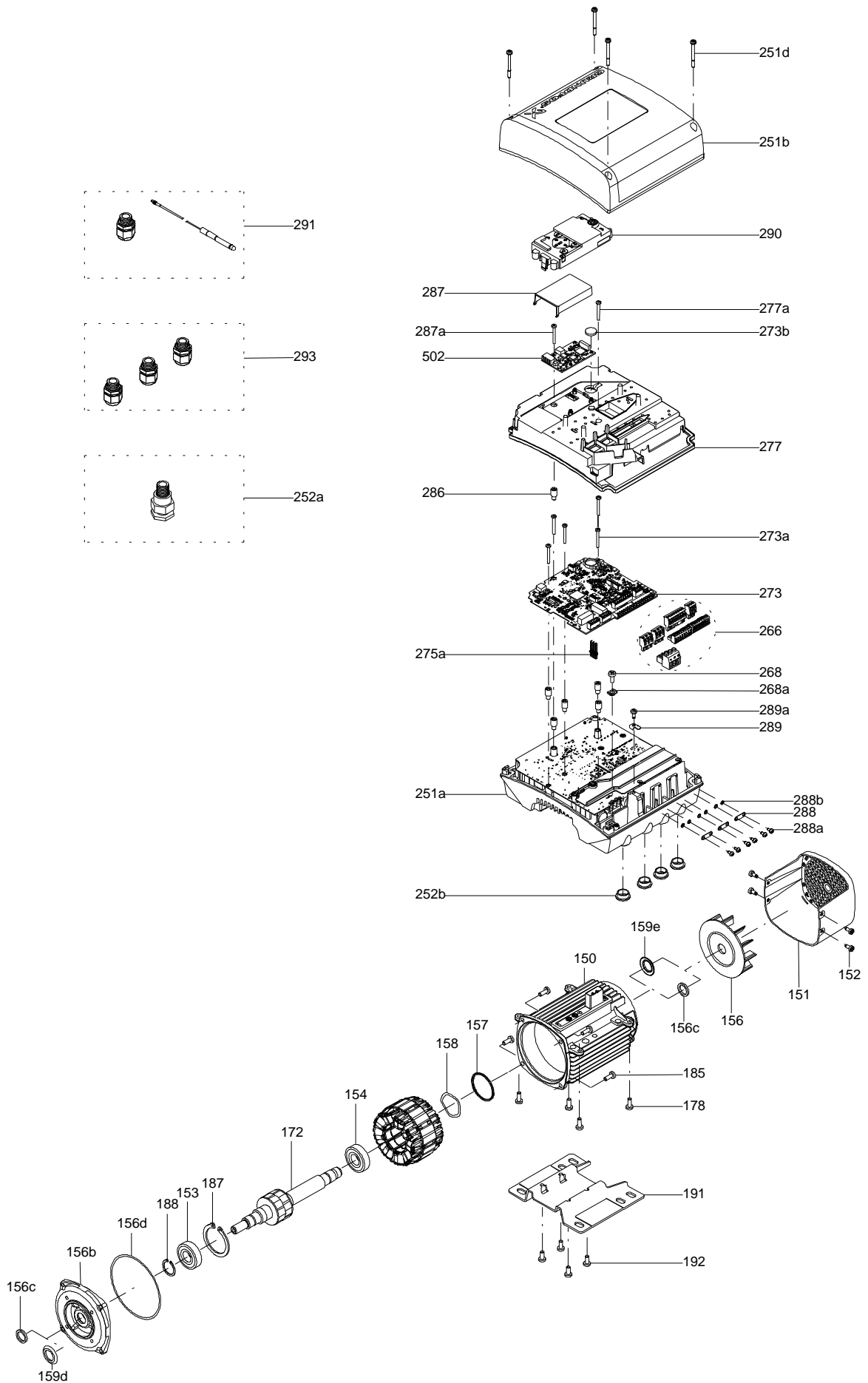


Sectional drawing (TM058200 for TPE2,TPE3)



TM058200

Exploded view ( TM057026 for MGE model H/I )



**Parts list TP 100-260/4, Product No. On request**  
**Valid from 1.1.2011 (1152)**

Pos	Description	Annotation	Données de classification	Référence	Quantité	Unité
+	Motor				1	pcs
-	Coupling cpl.				1	pcs
8a	Coupling				1	
9	Socket set screw		Length (mm): 12 Thread: M8		1	
13	Hex socket countersunk screw				1	
14	Washer				1	
23	Hex head screw		Length (mm): 30 Thread: M8		6	
-	Cover cpl.				1	pcs
25	Hex head cap screw				4	
72a	O-ring		Diameter: 269.3 Thickness: 5.7		1	
77	Cover cpl.				1	
-	Shaft seal cpl.				1	pcs
	Pin				1	
17	Air vent screw				1	
58	Cover for shaft seal				1	
61	Bush				1	
62	O-ring		Diameter: 34.59 Thickness: 2.62		1	
105	Shaft seal		Material type: DBUE		1	
109	O-ring		Diameter: 119.5 Thickness: 3		1	
-	Shaft cpl.				1	pcs
11	Parallel key				1	
51	Pump shaft				1	
68	Hex socket head cap screw				1	
- 2a	Motor stool cpl.				1	pcs
2	Motor stool				1	
29	Hex head cap screw		Length (mm): 40 Thread: M16		8	
76	Plate				1	
76a	Cross recess countersunk screw				4	
- 49a	Impeller cpl.				1	pcs
49	Impeller				1	
66	Washer				1	
- 50	Pump housing cpl.				1	pcs
6	Pump housing				1	
20	Plug				5	
24	Cross recess countersunk screw				4	
26	Hex head screw		Length (mm): 45 Thread: M16		8	
45	Wear ring				1	

*Disclaimer: The information about the Grundfos pump in this document may be outdated.*

*Data may be subject to alterations without further notice.*

*Please contact us to verify the data above is still accurate/up-to-date.*

All information is copyright Grundfos.



[info@lenntech.com](mailto:info@lenntech.com)

<https://www.lenntech.com>

tel. +31 152 610 900

fax. +31 152 616 289