

CRT16-12 A-P-A-E-AUUE 3x380-415DV, 50Hz Grundfos pump 96117252




Thank you for your interest in our products. Please contact us for more information, or visit our website

<https://www.lenntech.com/grundfos/CRT16/96117252/CRT-16-12-A-P-A-E-AUUE.html>

info@lenntech.com

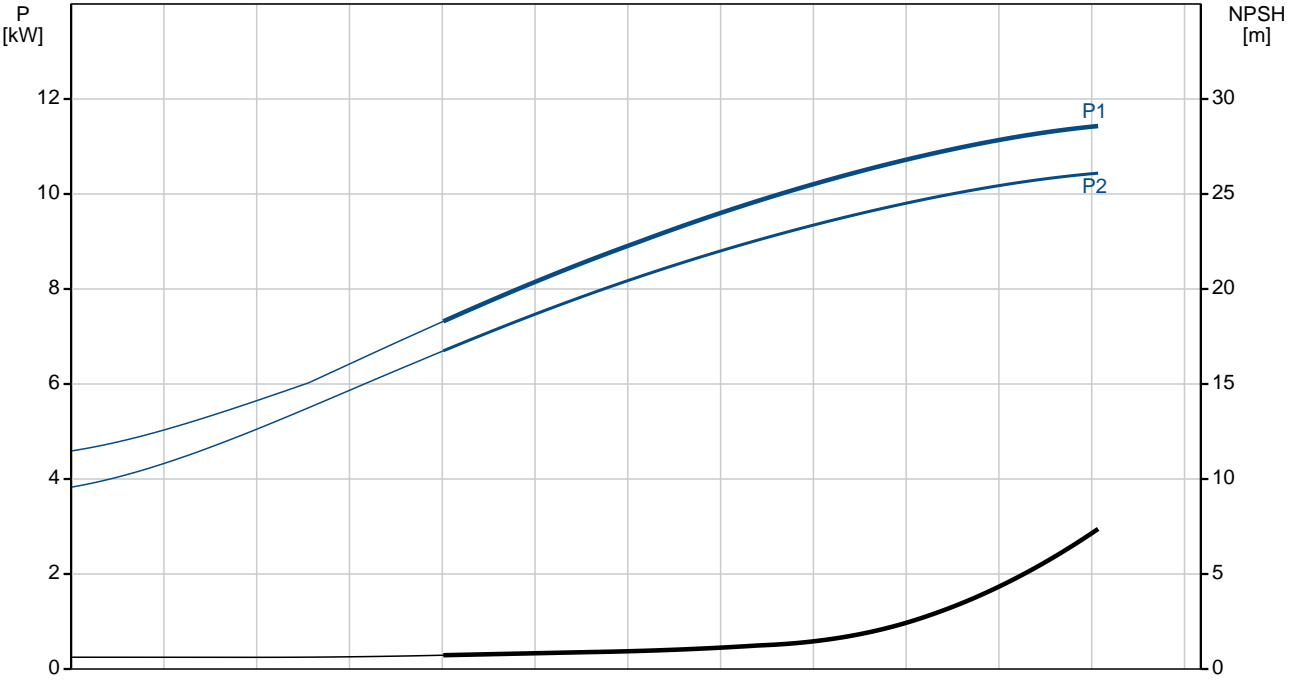
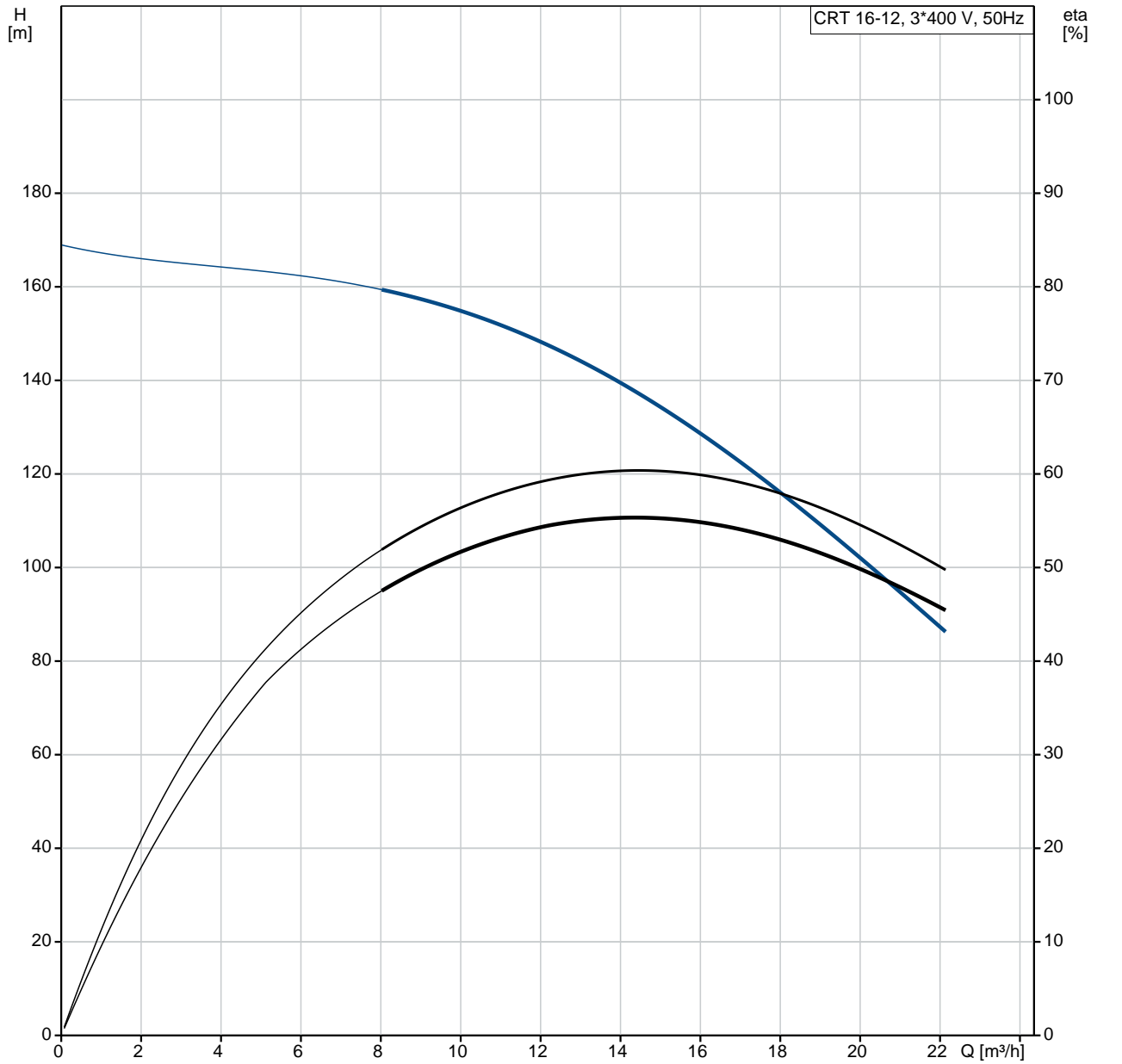
tel. +31 152 610 900

fax. +31 152 616 289

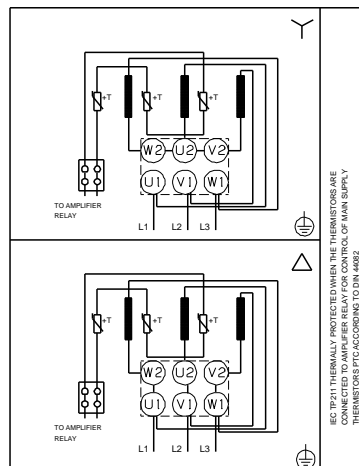
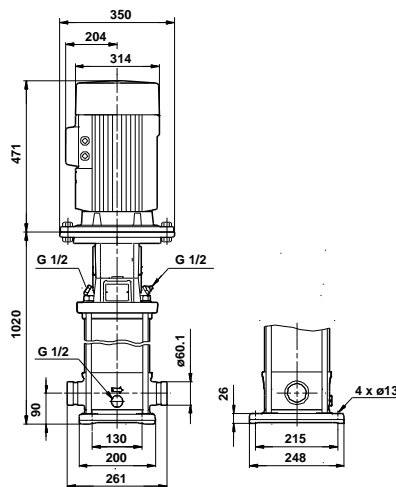
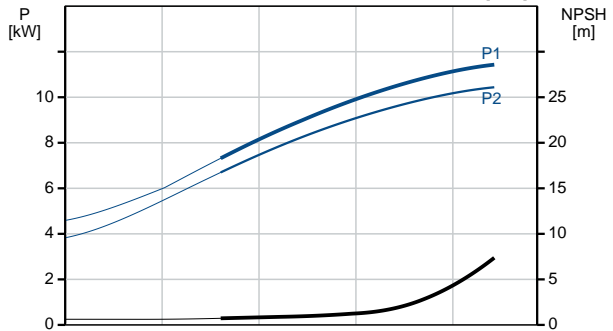
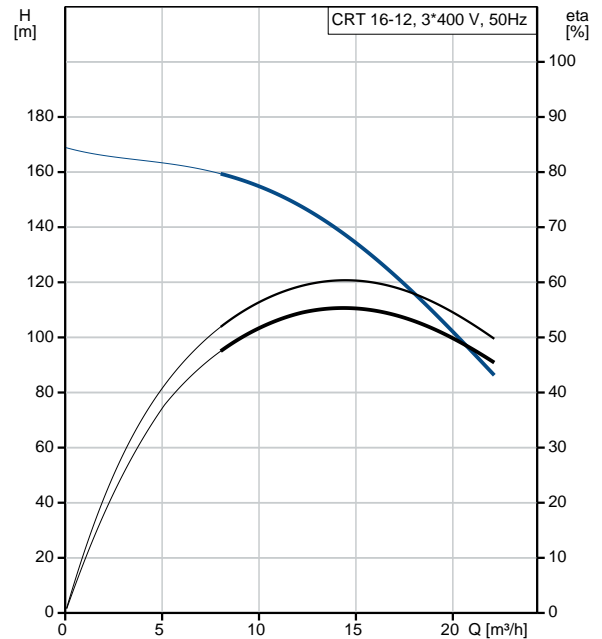
| Position | Qty. | Description |
|----------|------|---|
| | 1 | <p data-bbox="320 163 624 197">CRT 16-12 A-P-A-E-AUUE</p>  <p data-bbox="320 483 842 600">Product No.: On request Vertical, non-self-priming, multistage, in-line, centrifugal pump for installation in pipe systems and mounting on a foundation.</p> <p data-bbox="320 633 948 927">The pump has the following characteristics:</p> <ul style="list-style-type: none"> - Impellers, intermediate chambers and outer sleeve are made of Titanium. - Pump head cover and base are made of Titanium. - The shaft seal has assembly length according to EN 12756. - Power transmission is via cast iron split coupling. - Pipework connection is via PJE flanges/couplings. <p data-bbox="320 960 695 987">The motor is a 3-phase AC motor.</p> <p data-bbox="320 1021 405 1048">Liquid:</p> <p data-bbox="320 1052 823 1167">Pumped liquid: Water Liquid temperature range: -20 .. 120 °C Liquid temperature during operation: 20 °C Density: 998.2 kg/m³</p> <p data-bbox="320 1200 443 1227">Technical:</p> <p data-bbox="320 1232 882 1375">Rated flow: 16 m³/h Rated head: 133 m Primary shaft seal: AUUE Approvals on nameplate: CE, TR Curve tolerance: ISO9906:2012 3B</p> <p data-bbox="320 1408 437 1435">Materials:</p> <p data-bbox="320 1440 826 1583">Pump housing: Titanium ASTM B 265 Impeller: Titanium ASTM B 265 Bush material: NONE</p> <p data-bbox="320 1617 461 1644">Installation:</p> <p data-bbox="320 1648 860 1821">Maximum ambient temperature: 60 °C Max pressure at stated temp: 25 bar / 120 °C 25 bar / -20 °C Flange standard: PJE Pipe connection: 60,3 mm Flange size for motor: FF300</p> <p data-bbox="320 1854 497 1881">Electrical data:</p> <p data-bbox="320 1886 971 2089">Motor type: 160MB IE Efficiency class: IE3 Rated power - P2: 11 kW Power (P2) required by pump: 11 kW 11 kW Mains frequency: 50 Hz Rated voltage: 3 x 380-415D/660-690Y V</p> |

| Position | Qty. | Description |
|----------|------|---|
| | | <p>Rated current: 20,8-19,8/12,0-11,8 A</p> <p>Starting current: 660-780 %</p> <p>Cos phi - power factor: 0.88-0.84</p> <p>Rated speed: 2940-2950 rpm</p> <p>Efficiency: IE3 91,2%</p> <p>Motor efficiency at full load: 91.2-91.2 %</p> <p>Motor efficiency at 3/4 load: 91.8 %</p> <p>Motor efficiency at 1/2 load: 91.3 %</p> <p>Number of poles: 2</p> <p>Enclosure class (IEC 34-5): 55 Dust/Jetting</p> <p>Insulation class (IEC 85): F</p> <p>Others:</p> <p>Minimum efficiency index, MEI : 0.69</p> <p>Net weight: 138 kg</p> <p>Gross weight: 148 kg</p> |

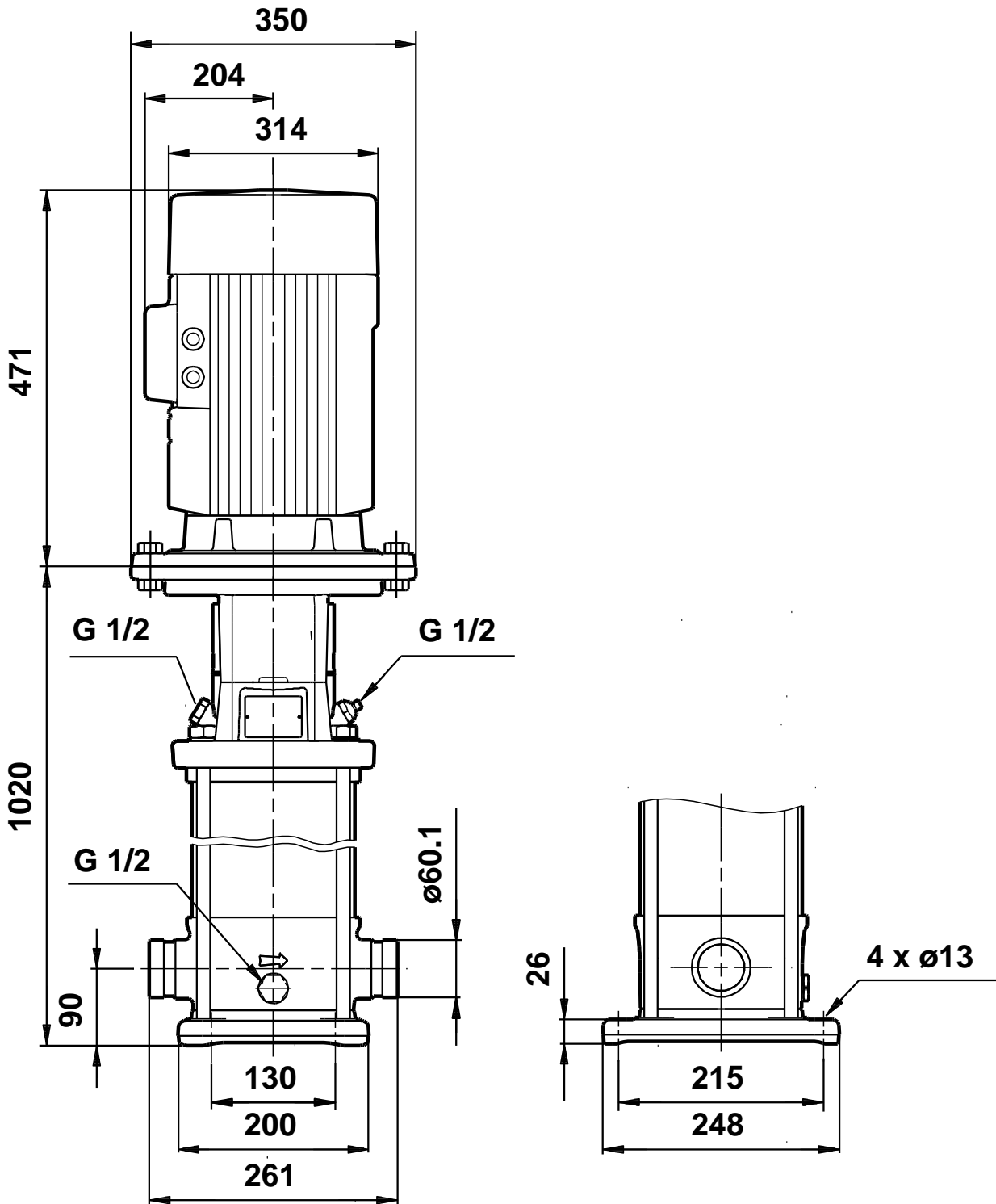
On request CRT 16-12 A-P-A-E-AUUE 50 Hz



| Description | Value |
|--------------------------------------|------------------------------------|
| General information: | |
| Product name: | CRT 16-12 A-P-A-E-AUUE |
| Product No: | On request |
| EAN number: | On request |
| Technical: | |
| Rated flow: | 16 m ³ /h |
| Rated head: | 133 m |
| Head max: | 173.5 m |
| Stages: | 14 |
| Impellers: | 12 |
| Primary shaft seal: | AUUE |
| Approvals on nameplate: | CE, TR |
| Curve tolerance: | ISO9906:2012 3B |
| Pump version: | A |
| Model: | A |
| Materials: | |
| Pump housing: | Titanium ASTM B 265 |
| Impeller: | Titanium ASTM B 265 |
| Material code: | A |
| Code for rubber: | E |
| Bush material: | NONE |
| Installation: | |
| Maximum ambient temperature: | 60 °C |
| Max pressure at stated temp: | 25 bar / 120 °C 25 bar / -20 °C |
| Flange standard: | PJE |
| Pipe connection: | 60,3 mm |
| Flange size for motor: | FF300 |
| Connect code: | P |
| Liquid: | |
| Pumped liquid: | Water |
| Liquid temperature range: | -20 .. 120 °C |
| Liquid temperature during operation: | 20 °C |
| Density: | 998.2 kg/m ³ |
| Electrical data: | |
| Motor type: | 160MB |
| IE Efficiency class: | IE3 |
| Rated power - P2: | 11 kW |
| Power (P2) required by pump: | 11 kW |
| Mains frequency: | 50 Hz |
| Rated voltage: | 3 x 380-415D/660-690Y V |
| Rated current: | 20,8-19,8/12,0-11,8 A |
| Starting current: | 660-780 % |
| Cos phi - power factor: | 0.88-0.84 |
| Rated speed: | 2940-2950 rpm |
| Efficiency: | IE3 91,2% |
| Motor efficiency at full load: | 91.2-91.2 % |
| Motor efficiency at 3/4 load: | 91.8 % |
| Motor efficiency at 1/2 load: | 91.3 % |
| Number of poles: | 2 |
| Enclosure class (IEC 34-5): | 55 Dust/Jetting |
| Insulation class (IEC 85): | F |
| Motor protec: | PTC |
| Motor No: | 85U17524 |
| Others: | |
| Minimum efficiency index, MEI : | 0.69 |
| Net weight: | 138 kg |
| Gross weight: | 148 kg |

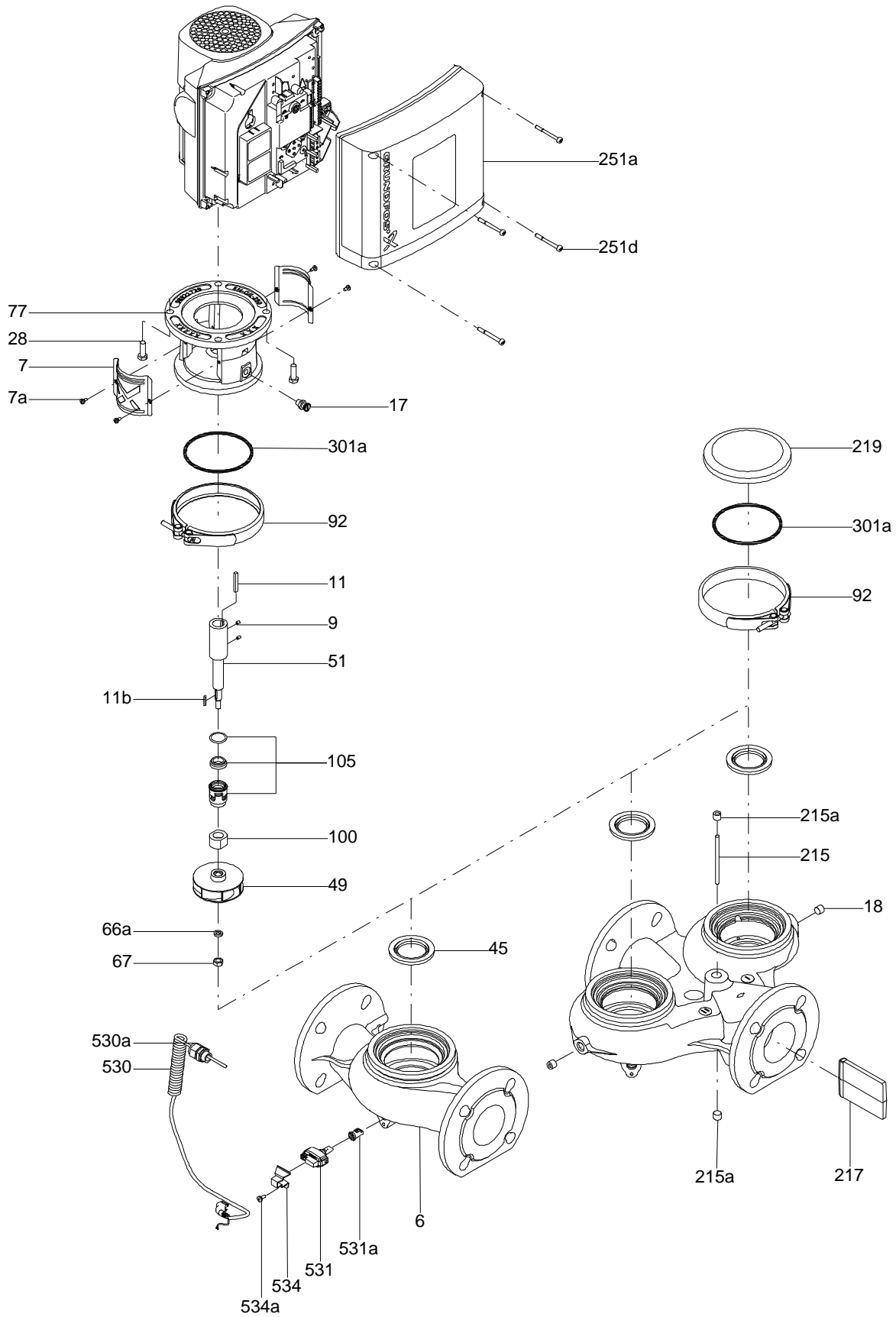


On request CRT 16-12 A-P-A-E-AUUE 50 Hz



Note! All units are in [mm] unless others are stated.
Disclaimer: This simplified dimensional drawing does not show all details.

Exploded view

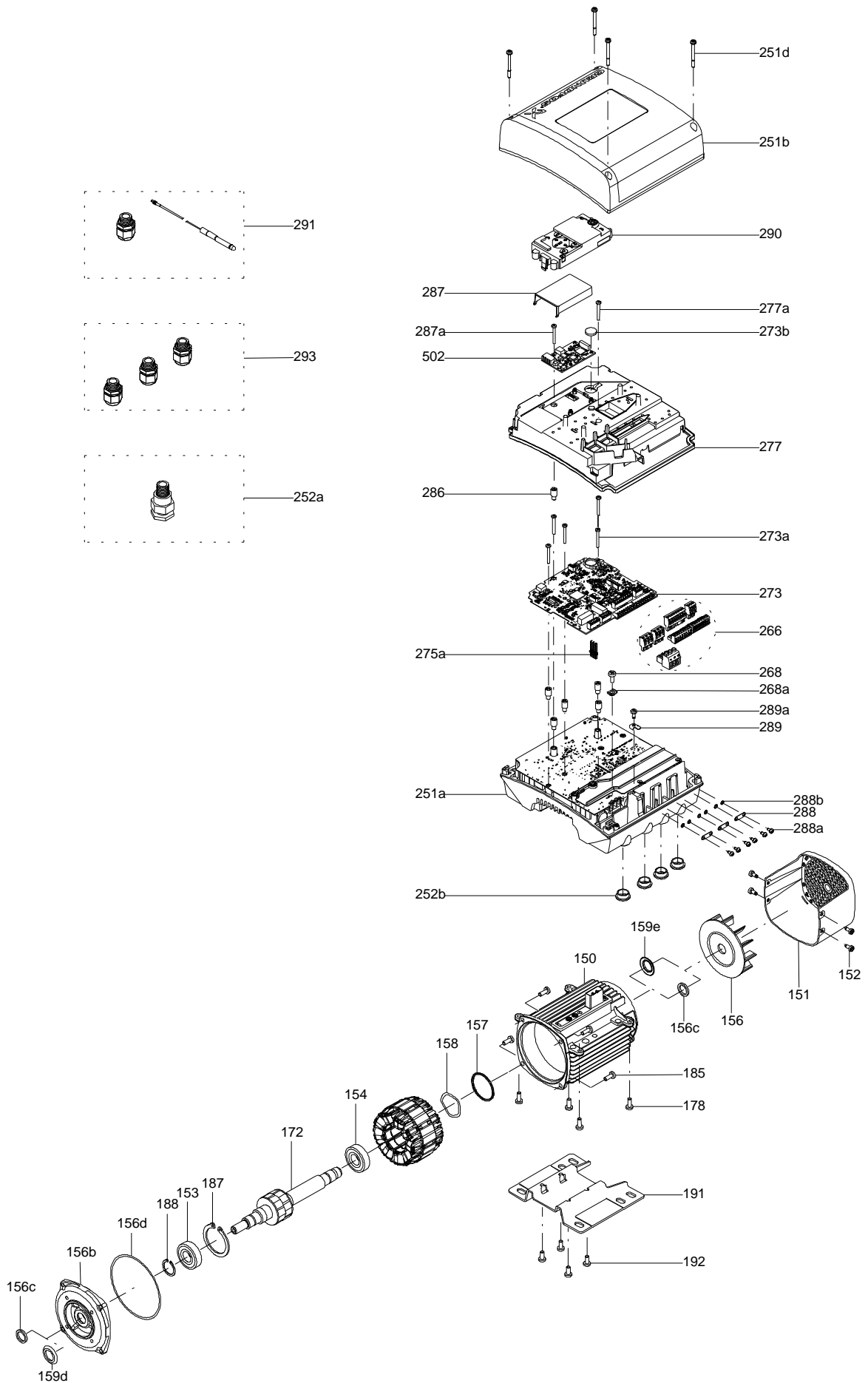


Sectional drawing (TM058200 for TPE2,TPE3)



TM058200

Exploded view (TM057026 for MGE model H/I)



Parts list CRT 16-12, Product No. On request
Valid from 25.3.2011 (1112)

| Pos | Description | Annotation | Données de classification | Référence | Quantité | Unité |
|------|---------------------------|------------|---------------------------|-----------|----------|-------|
| + | Motor | | | | 1 | pcs |
| - | Base cpl. | | | | 1 | pcs |
| 6 | Base | | | | 1 | |
| 25 | Drain plug | | | | 1 | |
| 56 | Base plate | | | | 1 | |
| - | Pump head cpl. | | | | 1 | pcs |
| 1 | Flange | | | | 1 | |
| 2 | Pump head | | | | 1 | |
| 7 | Coupling guard | | | | 2 | |
| 7a | Combi Slot Torx screw | | | | 4 | |
| - 8 | Coupling | | | | 1 | |
| 9 | Hex socket head cap screw | | Designation: DIN 912 | | 4 | |
| | | | Length (mm): 25 | | | |
| | | | Thread: M10 | | | |
| 10 | Shaft pin | | Diameter: 5 | | 1 | |
| | | | Length (mm): 26 | | | |
| 10a | Coupling | | Dimension: Å 90X90 | | 1 | |
| | | | Type: NEMA | | | |
| 18 | Air vent screw | | Thread: RG 1/2 | | 1 | |
| 23 | Plug | | | | 1 | |
| 28 | Hex head screw | | Length (mm): 25 | | 4 | |
| | | | Thread: M12 | | | |
| 28a | Hex head screw | | Length (mm): 45 | | 4 | |
| | | | Thread: M16 | | | |
| 36 | Nut | | Thread: M16 | | 4 | |
| 36 | Hex nut | | Thread: M16 | | 4 | |
| 37 | O-ring | | | | 1 | |
| 66a | Washer | | Designation: DIN 125 A2 | | 4 | |
| | | | Internal diameter: 17 | | | |
| | | | Outer diameter: 30 | | | |
| | | | Thickness: 3 | | | |
| 77 | Pump head cover | | | | 1 | |
| 107 | Plug | | | | 1 | |
| - | Rubber module, EPDM | | | | 1 | pcs |
| 20 | Spring | | | | 4 | |
| 37 | O-ring | | | | 2 | |
| 38 | O-ring | | Diameter: 5,3 | | 1 | |
| | | | Material type: EPDM | | | |
| | | | Thickness: 2,4 | | | |
| 100 | O-ring | | Diameter: 16,3 | | 2 | |
| | | | Material type: EPDM | | | |
| | | | Thickness: 2,4 | | | |
| 106 | O-ring | | Diameter: 27.5 | | 1 | |
| | | | Material type: EPDM | | | |
| | | | Thickness: 2.75 | | | |
| 26 | Staybolt | | | | 4 | pcs |
| 55 | Sleeve | | Material type: TITAN | | 1 | pcs |
| 76 | Nameplate | | | | 1 | pcs |
| 76a | Rivet | | | | 1 | pcs |
| - 80 | Chamber stack | | | | 1 | pcs |
| 3 | Chamber top | | | | 1 | |
| - 4 | Intermediate chamber cpl. | | | | 9 | |
| | Intermediate chamber | | | | 1 | |
| 45 | Seal ring | | | | 1 | |
| 65 | Neck ring retainer | | | | 1 | |
| 4 | Intermediate chamber | | | | 1 | |
| 4.a | Intermediate chamber cpl. | | | | 3 | |
| 26a | Strap cpl. | | | | 2 | |
| 26b | Hex head screw | | Length (mm): 25 | | 2 | |

| Pos | Description | Annotation | Données de classification | Référence | Quantité | Unité |
|------|-----------------|------------|---------------------------|-----------|----------|-------|
| | | | Thread: M8 | | | |
| 26c | Washer | | Internal diameter: 8.4 | | 2 | |
| | | | Outer diameter: 16 | | | |
| | | | Thickness: 1.6 | | | |
| 44a | Inlet part cpl. | | | | 1 | |
| 44b | Inlet part | | | | 1 | |
| 47a | Bearing ring | | | | 2 | |
| - 49 | Impeller cpl. | | | | 12 | |
| 49c | Impeller | | | | 1 | |
| 51 | Shaft cpl. | | Diameter: 16 | | 1 | |
| | | | Length (mm): 744 | | | |
| 61 | Seal driver | | | | 1 | |
| 64 | Spacing pipe | | Internal diameter: 17,50 | | 1 | |
| | | | Outer diameter: 21,50 | | | |
| | | | Length (mm): 29,05 | | | |
| 64 | Spacing pipe | | Internal diameter: 17,50 | | 9 | |
| | | | Outer diameter: 21,50 | | | |
| | | | Length (mm): 43,60 | | | |
| 64a | Spacing bush | | | | 3 | |
| 64c | Spacing pipe | | Internal diameter: 17,50 | | 1 | |
| | | | Outer diameter: 21,50 | | | |
| | | | Length (mm): 8,50 | | | |
| 64d | Spacing bush | | | | 3 | |
| 67 | Lock nut | | Thread: M12 | | 1 | |
| 67a | Split pin | | | | 1 | |
| 69a | Spacing pipe | | Internal diameter: 17,50 | | 1 | |
| | | | Outer diameter: 21,50 | | | |
| | | | Length (mm): 45 | | | |
| 105 | Shaft seal | | Material type: AUUE | | 1 | pcs |

Disclaimer: The information about the Grundfos pump in this document may be outdated.

Data may be subject to alterations without further notice.

Please contact us to verify the data above is still accurate/up-to-date.

All information is copyright Grundfos.



info@lenntech.com

<https://www.lenntech.com>

tel. +31 152 610 900

fax. +31 152 616 289