

## CRT4-10 A-P-A-E-AUUE 3x380-415DV Grundfos pump 96100929




Thank you for your interest in our products. Please contact us for more information, or visit our website

<https://www.lenntech.com/grundfos/CRT04/96100929/CRT-4-10-A-P-A-E-AUUE.html>

[info@lenntech.com](mailto:info@lenntech.com)

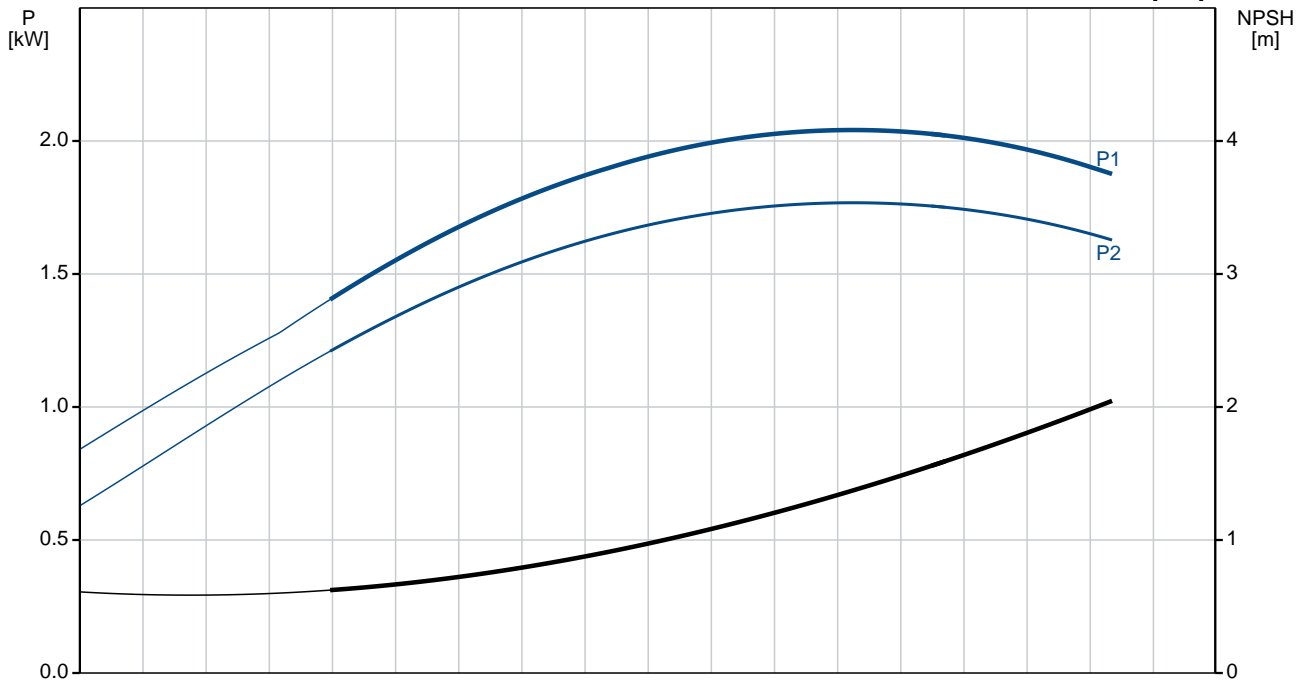
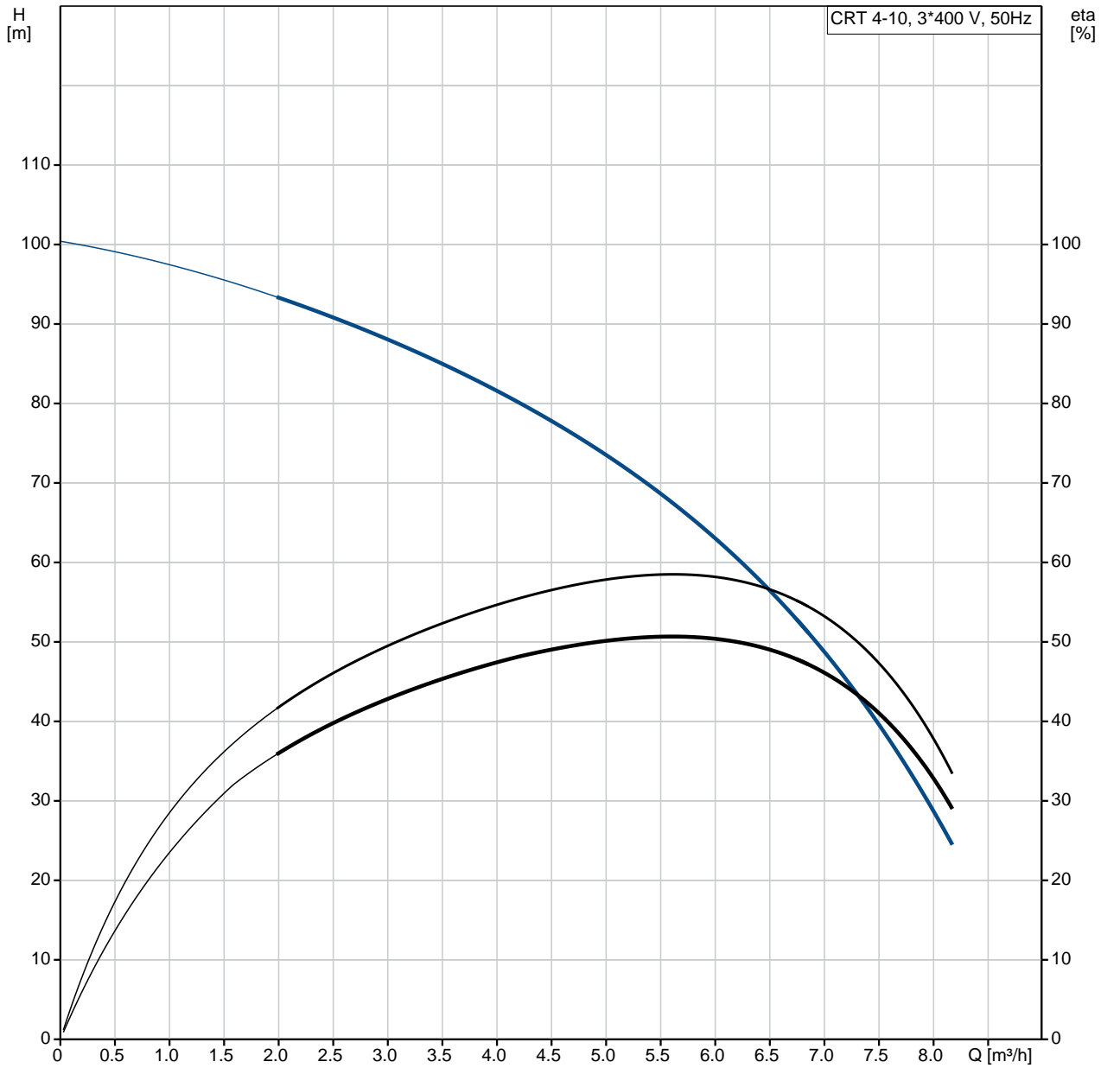
tel. +31 152 610 900

fax. +31 152 616 289

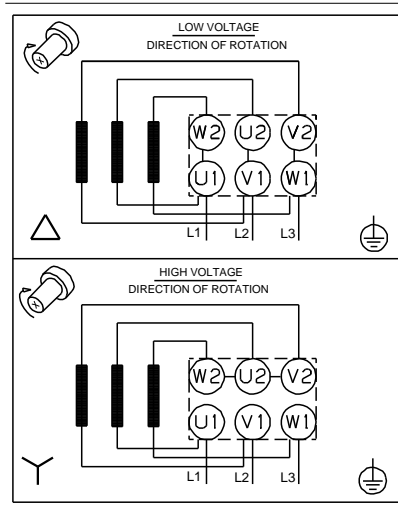
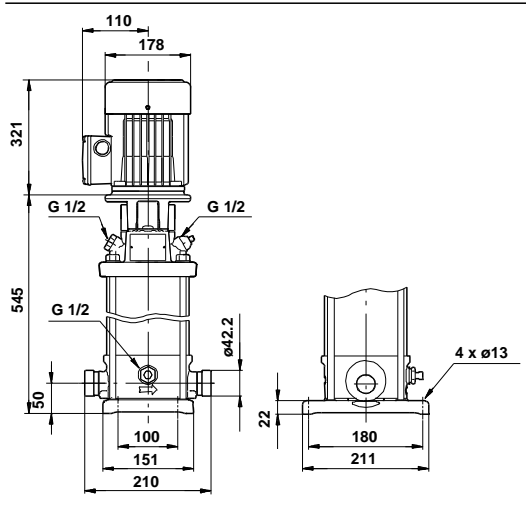
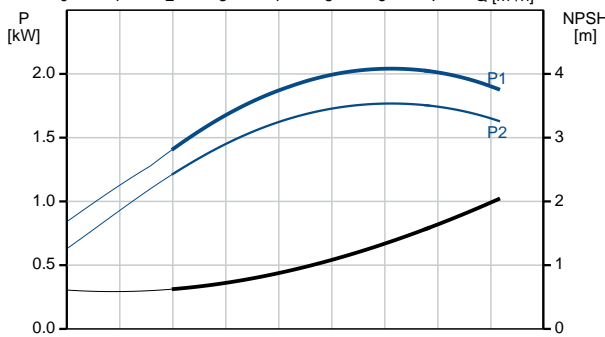
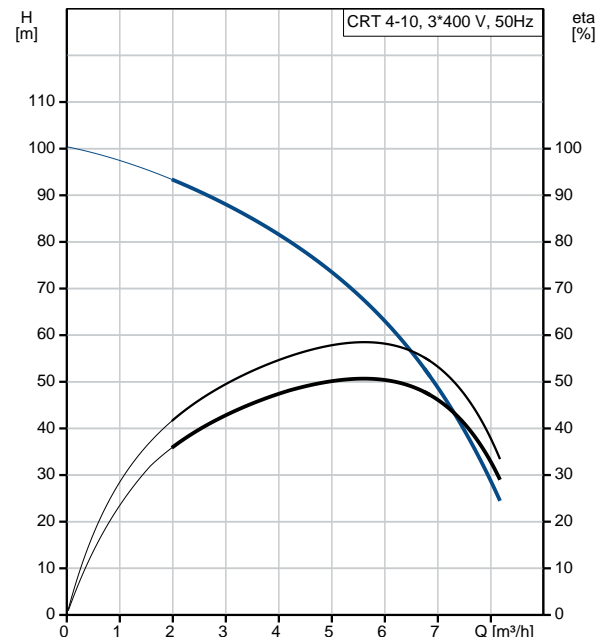
Position	Qty.	Description
	1	<p data-bbox="320 163 608 194"><b>CRT 4-10 A-P-A-E-AUUE</b></p>  <p data-bbox="320 488 842 600">Product No.: On request Vertical, non-self-priming, multistage, in-line, centrifugal pump for installation in pipe systems and mounting on a foundation.</p> <p data-bbox="320 633 948 927">The pump has the following characteristics:</p> <ul data-bbox="357 667 948 898" style="list-style-type: none"> <li>- Impellers, intermediate chambers and outer sleeve are made of Titanium.</li> <li>- Pump head cover and base are made of Titanium.</li> <li>- The shaft seal has assembly length according to EN 12756.</li> <li>- Power transmission is via cast iron split coupling.</li> <li>- Pipework connection is via PJE flanges/couplings.</li> </ul> <p data-bbox="320 960 695 992">The motor is a 3-phase AC motor.</p> <p data-bbox="320 1025 826 1167"><b>Liquid:</b> Pumped liquid: Water Liquid temperature range: -20 .. 120 °C Liquid temperature during operation: 20 °C Density: 998.2 kg/m<sup>3</sup></p> <p data-bbox="320 1200 882 1375"><b>Technical:</b> Rated flow: 6 m<sup>3</sup>/h Rated head: 63.2 m Primary shaft seal: AUUE Approvals on nameplate: CE, TR Curve tolerance: ISO9906:2012 3B</p> <p data-bbox="320 1408 826 1583"><b>Materials:</b> Pump housing: Titanium ASTM B 265 Impeller: Titanium ASTM B 265 Bush material: NONE</p> <p data-bbox="320 1617 858 1821"><b>Installation:</b> Maximum ambient temperature: 60 °C Max pressure at stated temp: 25 bar / 120 °C 25 bar / -20 °C Flange standard: PJE Pipe connection: 42,4 mm Flange size for motor: FT115</p> <p data-bbox="320 1854 858 2089"><b>Electrical data:</b> Motor type: 90LC IE Efficiency class: IE3 Rated power - P2: 2.2 kW Power (P2) required by pump: 2.2 kW 2.2 kW Mains frequency: 50 Hz Rated voltage: 3 x 380-415D V</p>

Position	Qty.	Description
		<p>Rated current: 4.45 A</p> <p>Starting current: 850-950 %</p> <p>Cos phi - power factor: 0.89-0.87</p> <p>Rated speed: 2890-2910 rpm</p> <p>Efficiency: IE3 85,9%</p> <p>Motor efficiency at full load: 85.9 %</p> <p>Motor efficiency at 3/4 load: 86.8 %</p> <p>Motor efficiency at 1/2 load: 86.0 %</p> <p>Number of poles: 2</p> <p>Enclosure class (IEC 34-5): 55 Dust/Jetting</p> <p>Insulation class (IEC 85): F</p> <p><b>Others:</b></p> <p>Minimum efficiency index, MEI : 0.7</p> <p>Net weight: 11.7 kg</p> <p>Gross weight: 16.7 kg</p>

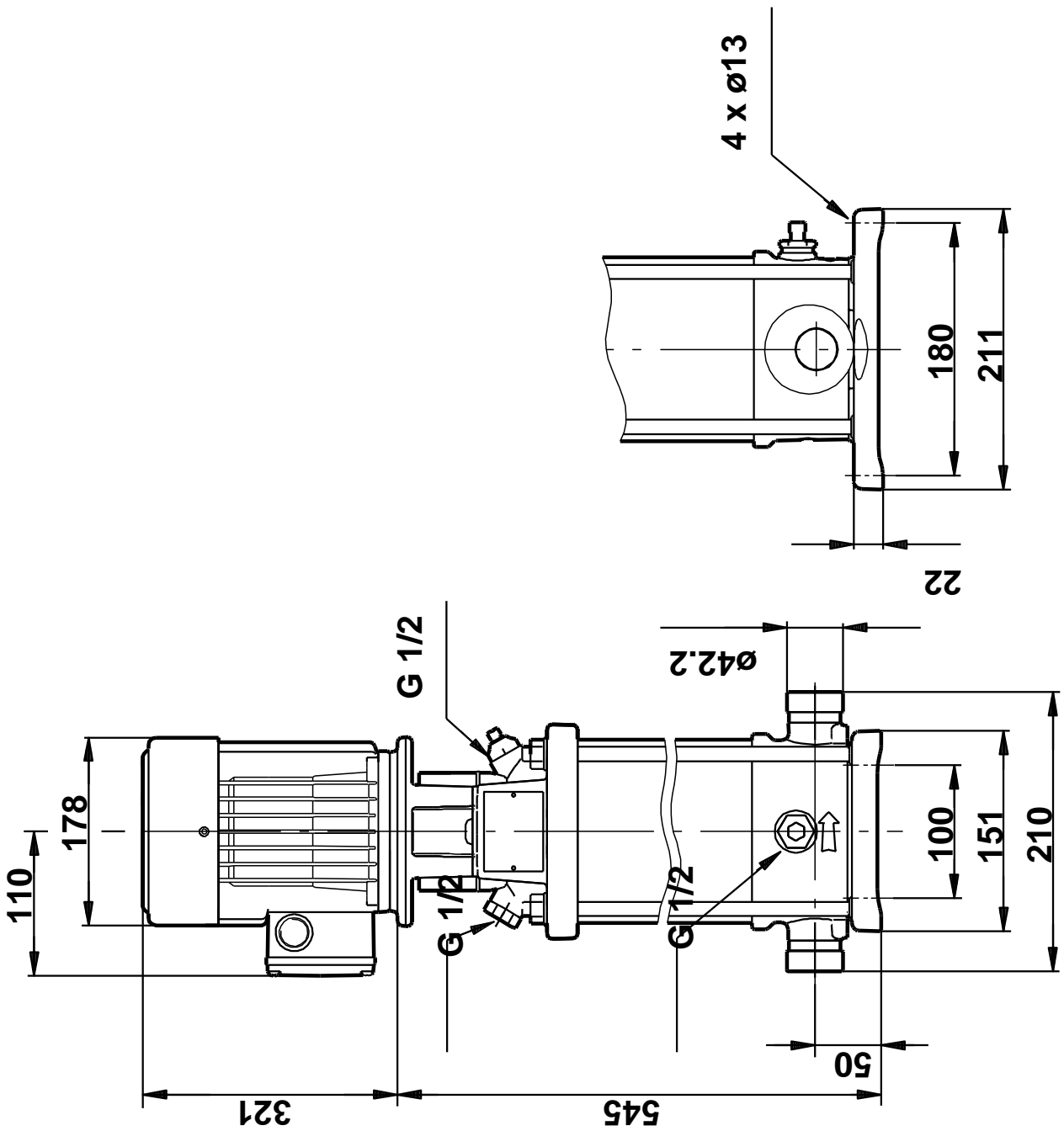
# On request CRT 4-10 A-P-A-E-AUUE 50 Hz



Description	Value
<b>General information:</b>	
Product name:	CRT 4-10 A-P-A-E-AUUE
Product No:	On request
EAN number:	On request
<b>Technical:</b>	
Rated flow:	6 m <sup>3</sup> /h
Rated head:	63.2 m
Head max:	101 m
Stages:	12
Impellers:	10
Primary shaft seal:	AUUE
Approvals on nameplate:	CE, TR
Curve tolerance:	ISO9906:2012 3B
Pump version:	A
Model:	A
<b>Materials:</b>	
Pump housing:	Titanium ASTM B 265
Impeller:	Titanium ASTM B 265
Material code:	A
Code for rubber:	E
Bush material:	NONE
<b>Installation:</b>	
Maximum ambient temperature:	60 °C
Max pressure at stated temp:	25 bar / 120 °C 25 bar / -20 °C
Flange standard:	PJE
Pipe connection:	42,4 mm
Flange size for motor:	FT115
Connect code:	P
<b>Liquid:</b>	
Pumped liquid:	Water
Liquid temperature range:	-20 .. 120 °C
Liquid temperature during operation:	20 °C
Density:	998.2 kg/m <sup>3</sup>
<b>Electrical data:</b>	
Motor type:	90LC
IE Efficiency class:	IE3
Rated power - P2:	2.2 kW
Power (P2) required by pump:	2.2 kW 2.2 kW
Mains frequency:	50 Hz
Rated voltage:	3 x 380-415D V
Rated current:	4.45 A
Starting current:	850-950 %
Cos phi - power factor:	0.89-0.87
Rated speed:	2890-2910 rpm
Efficiency:	IE3 85,9%
Motor efficiency at full load:	85.9 %
Motor efficiency at 3/4 load:	86.8 %
Motor efficiency at 1/2 load:	86.0 %
Number of poles:	2
Enclosure class (IEC 34-5):	55 Dust/Jetting
Insulation class (IEC 85):	F
Motor protec:	NONE
Motor No:	85U15908
<b>Others:</b>	
Minimum efficiency index, MEI :	0.7
Net weight:	11.7 kg
Gross weight:	16.7 kg

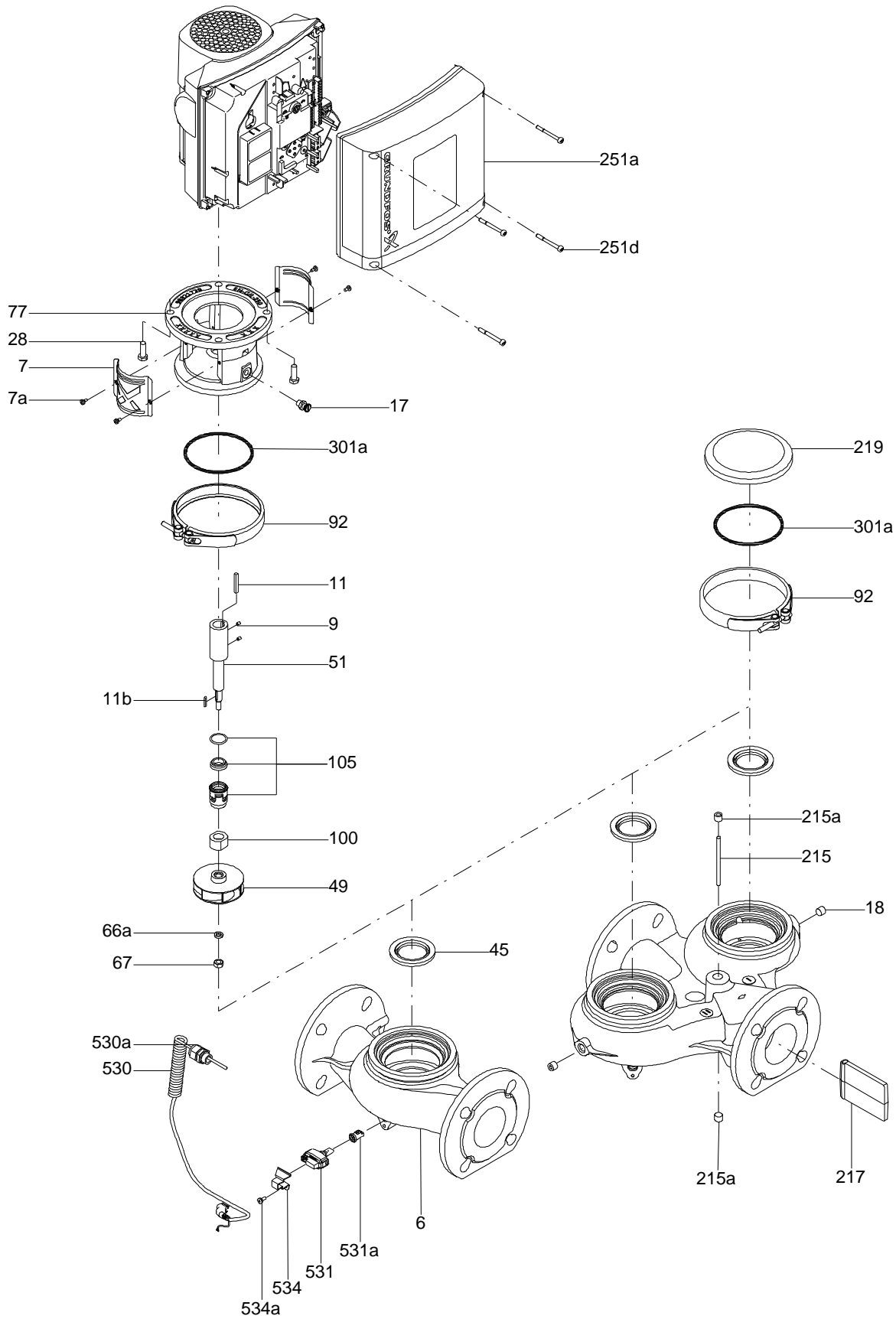


On request CRT 4-10 A-P-A-E-AUUE 50 Hz



Note! All units are in [mm] unless others are stated.  
Disclaimer: This simplified dimensional drawing does not show all details.

Exploded view



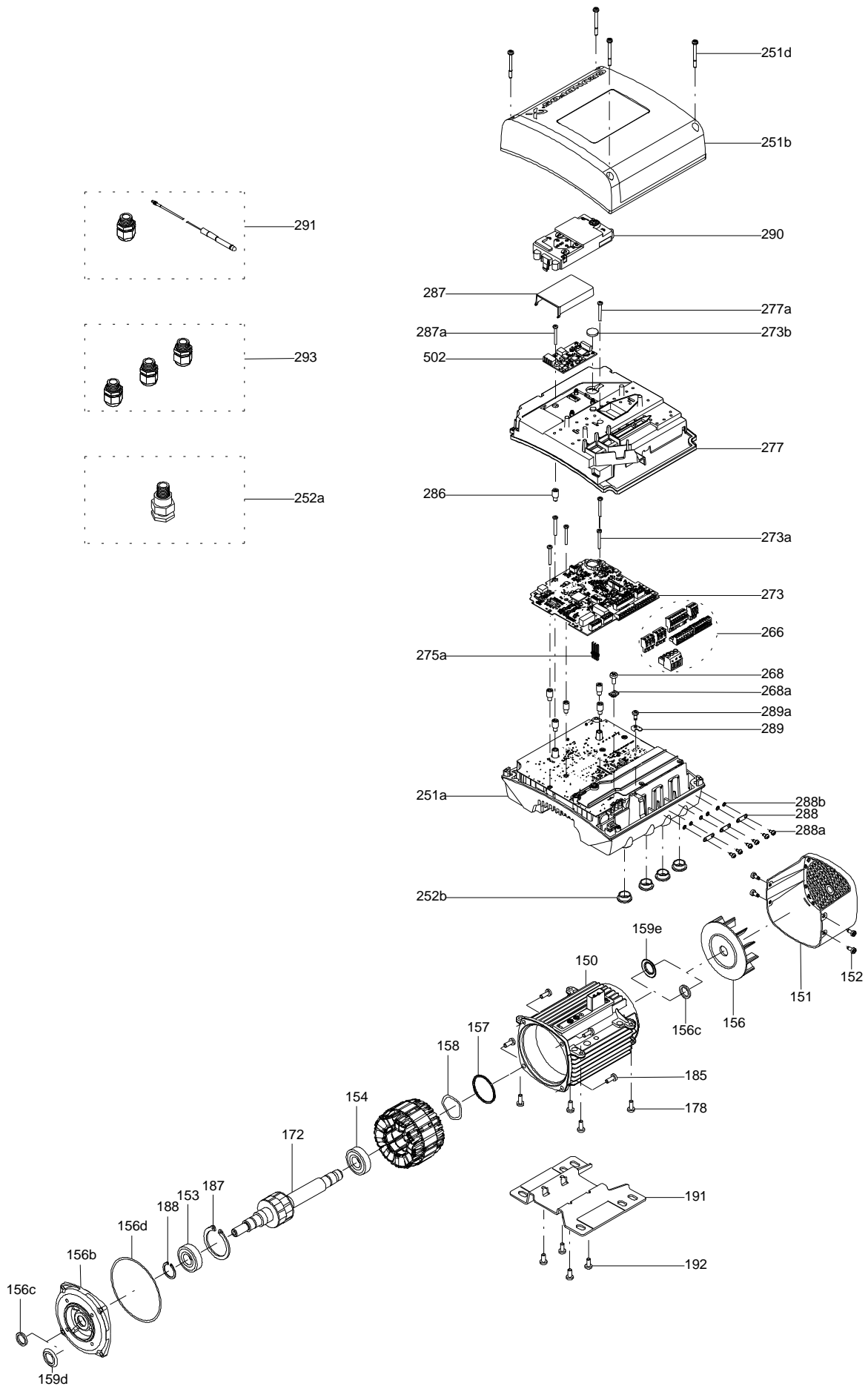
Sectional drawing (TM058200 for TPE2,TPE3)



TM058200



Exploded view ( TM057026 for MGE model H/I )



**Parts list CRT 4-10, Product No. On request**  
**Valid from 1.1.2011 (1152)**

Pos	Description	Annotation	Données de classification	Référence	Quantité	Unité
-	Base cpl.				1	pcs
	Plug				2	
6	Base				1	
56	Base plate				1	
-	Pump head cpl.				1	pcs
2	Pump head				1	
7	Coupling guard				2	
7a	Combi Slot Torx screw				4	
9	Hex socket head cap screw		Designation: DIN 912		4	
			Length (mm): 25			
			Thread: M8			
10	Shaft pin		Diameter: 5		1	
			Length (mm): 26			
10a	Coupling half				2	
18	Air vent screw		Thread: RG 1/2		1	
23	Plug				1	
28	Hex head screw		Length (mm): 20		4	
			Thread: M8			
36	Nut		Thread: M12		4	
60	Formed wire spring				1	
66a	Washer		Designation: DIN 125 A2		4	
			Internal diameter: 13			
			Outer diameter: 24			
			Thickness: 2,5			
77	Pump head cover				1	
107	Plug				1	
-	Rubber parts cpl.				1	pcs
25	Priming valve cpl.				1	
37	O-ring				2	
100	O-ring		Diameter: 16,3		2	
			Material type: EPDM			
			Thickness: 2,4			
106	O-ring		Diameter: 22,00		1	
			Material type: EPDM			
			Thickness: 2,75			
-	Documentation / labels				1	pcs
76	Nameplate				1	
76a	Rivet				2	
26	Staybolt				4	pcs
55	Sleeve		Material type: TITAN		1	pcs
			Dimension: L=314,6			
-	80 Chamber stack		Bearing type: SIC100		1	pcs
3	Intermediate chamber cpl.				1	
3b	Intermediate chamber				1	
-	4 Impeller cpl.				7	
	Intermediate chamber				1	
45	Neck ring				1	
65	Retainer for seal ring				1	
4a	Chamber w. bearing cpl.				2	
-	5a Intermediate chamber				1	
	Chamber				1	
45	Neck ring				1	
65	Retainer for seal ring				1	
47a	Bearing ring, rotating				2	
49	Impeller cpl.				10	
50a	Plate for top chamber				1	
51	Pump shaft cpl.		Diameter: M12		1	
			Length (mm): 421.4			
61	Spacer for shaft seal				1	

Pos	Description	Annotation	Données de classification	Référence	Quantité	Unité
64	Spacing pipe		Internal diameter: 12,7 Outer diameter: 15 Length (mm): 26,0		7	
64a	Spacing pipe				2	
64c	Spacing pipe		Internal diameter: 12,7 Outer diameter: 16,2 Length (mm): 10,5		1	
67	Lock nut		Thread: M8		1	
67a	Split pin		Designation: DIN 94 Diameter: 2,5 Length (mm): 20		1	
69	Spacing pipe		Internal diameter: 12,7 Outer diameter: 15 Length (mm): 27,0		2	
69	Spacing pipe		Internal diameter: Å~12,7 Outer diameter: Å~15 Length (mm): 10,0		1	
105	Shaft seal		Material type: AUUE		1	pcs
+ 2099	Motor				1	pcs

*Disclaimer: The information about the Grundfos pump in this document may be outdated.*

*Data may be subject to alterations without further notice.*

*Please contact us to verify the data above is still accurate/up-to-date.*

All information is copyright Grundfos.



[info@lenntech.com](mailto:info@lenntech.com)

<https://www.lenntech.com>

tel. +31 152 610 900

fax. +31 152 616 289