

CRK 2- 90/ 9 A-W-A-AUUV 3x230D/400Y V Grundfos pump 40907109




Thank you for your interest in our products. Please contact us for more information, or visit our website

<https://www.lenntech.com/grundfos/CRK02/40907109/CRK-2-90-9-A-W-A-AUUV.html>

info@lenntech.com

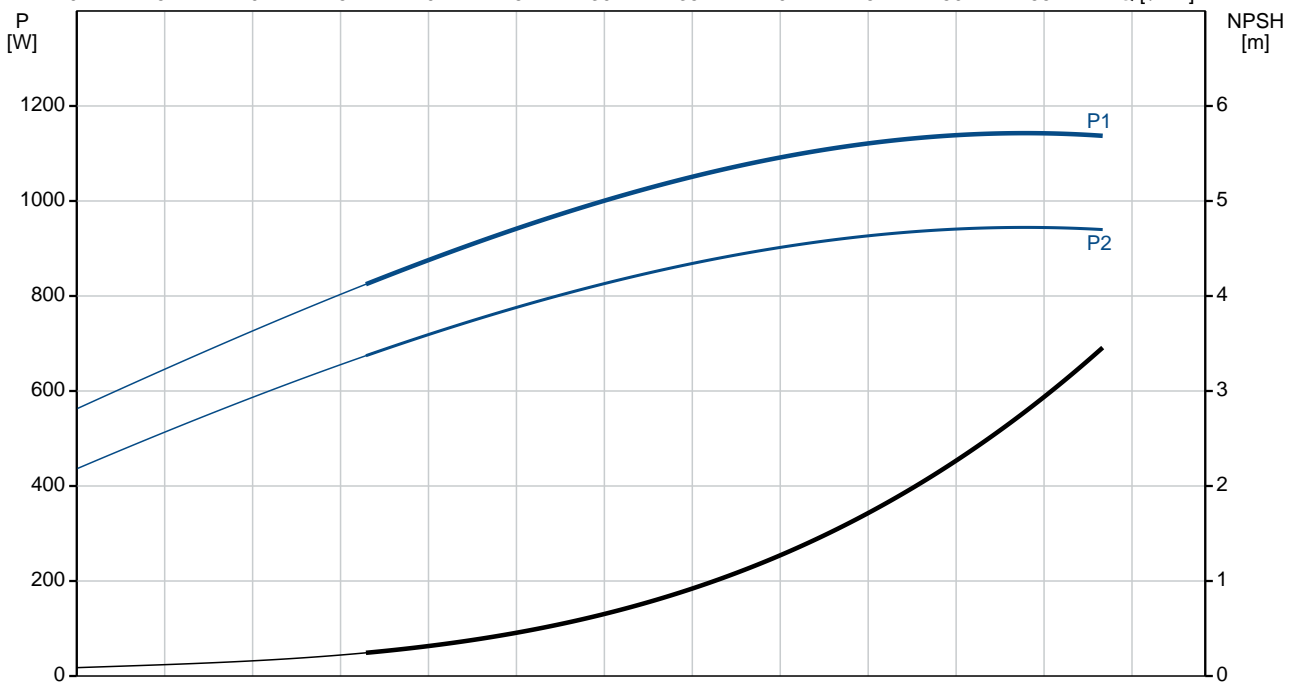
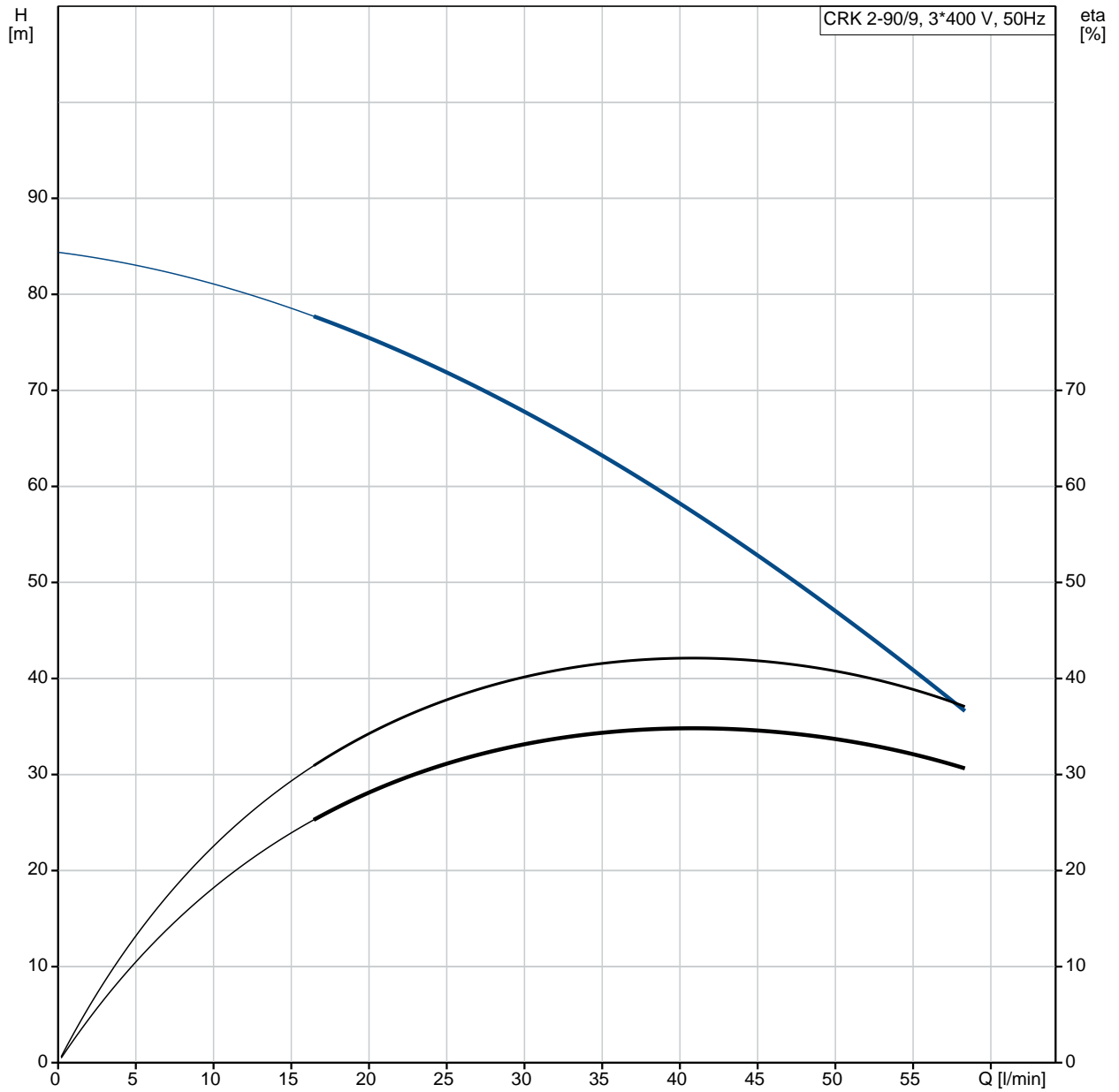
tel. +31 152 610 900

fax. +31 152 616 289

Position	Qty.	Description
	1	<p data-bbox="320 163 614 194">CRK 2-90/9 A-W-A-AUUV</p>  <p data-bbox="710 734 1197 761" style="text-align: right;">Note! Product picture may differ from actual product</p> <p data-bbox="320 768 837 853">Product No.: On request Multistage, immersible, self-priming, centrifugal pump for vertical installation in tanks etc.</p> <p data-bbox="320 887 901 1093">The pump has the following characteristics:</p> <ul style="list-style-type: none"> - Installation length according to DIN 5440. - Impellers, intermediate chambers and spline shaft are made of Stainless steel. - Mechanical shaft seal according to EN 12756. - Power transmission via cast iron split coupling. <p data-bbox="320 1126 694 1182">The motor is a 3-phase AC motor. Immersion depth: 277 mm</p> <p data-bbox="320 1216 821 1361">Liquid: Pumped liquid: Water Liquid temperature range: -10 .. 90 °C Liquid temperature during operation: 20 °C Density: 998.2 kg/m³</p> <p data-bbox="320 1395 885 1541">Technical: Rated flow: 41.7 l/min Rated head: 58.6 m Primary shaft seal: AUUV Curve tolerance: ISO9906:2012 3B</p> <p data-bbox="320 1574 885 1776">Materials: Pump head: Cast iron EN-JL1030 ASTM A48-30 B Impeller: Stainless steel DIN W.-Nr. 1.4301 AISI 304</p> <p data-bbox="320 1809 774 1933">Installation: Maximum ambient temperature: 60 °C Pipe connection: G 1 1/4 Flange size for motor: FT100</p> <p data-bbox="320 1966 774 2112">Electrical data: Motor type: 80B IE Efficiency class: IE2 Rated power - P2: 1.1 kW Power (P2) required by pump: 1.1 kW</p>

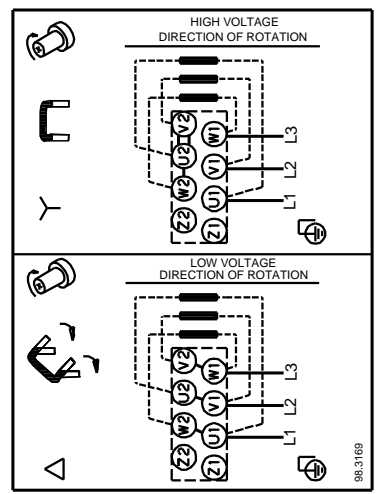
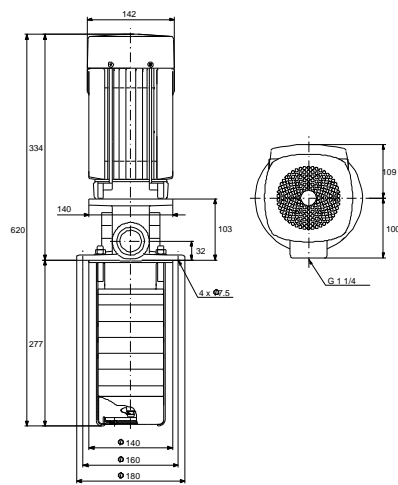
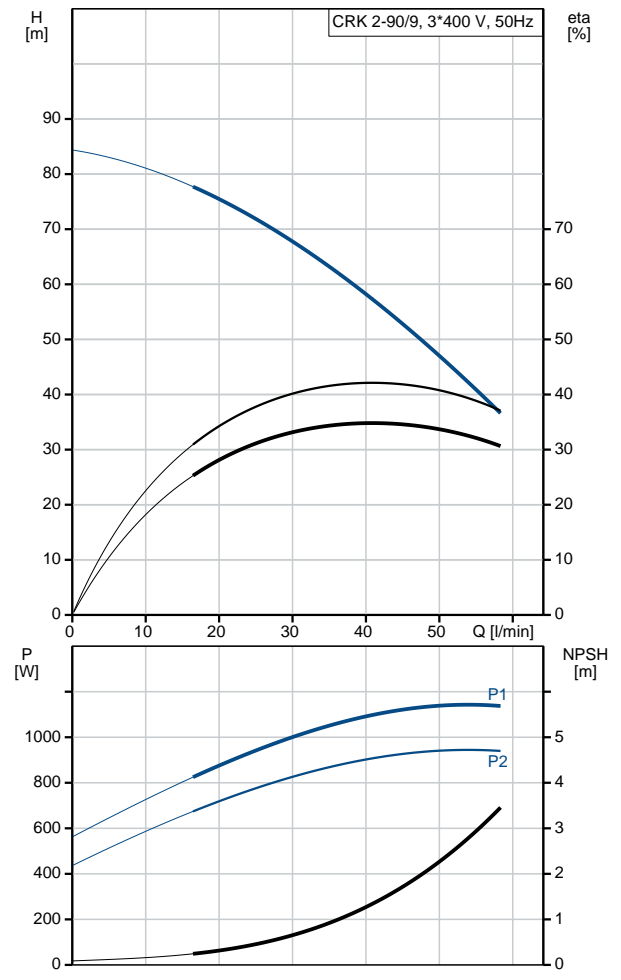
Position	Qty.	Description
		<p>Mains frequency: 50 Hz</p> <p>Rated voltage: 3 x 220-240D/380-415Y V</p> <p>Rated current: 4.45/2.55 A</p> <p>Starting current: 640-700 %</p> <p>Cos phi - power factor: 0.84-0.76</p> <p>Rated speed: 2820-2860 rpm</p> <p>Motor efficiency at full load: 79.6 %</p> <p>Motor efficiency at 3/4 load: 84.5 %</p> <p>Motor efficiency at 1/2 load: 84.5 %</p> <p>Number of poles: 2</p> <p>Enclosure class (IEC 34-5): 55 Dust/Jetting</p> <p>Insulation class (IEC 85): F</p> <p>Others:</p> <p>Minimum efficiency index, MEI : 0.70</p> <p>Net weight: 17 kg</p>

On request CRK 2-90/9 A-W-A-AUUV 50 Hz



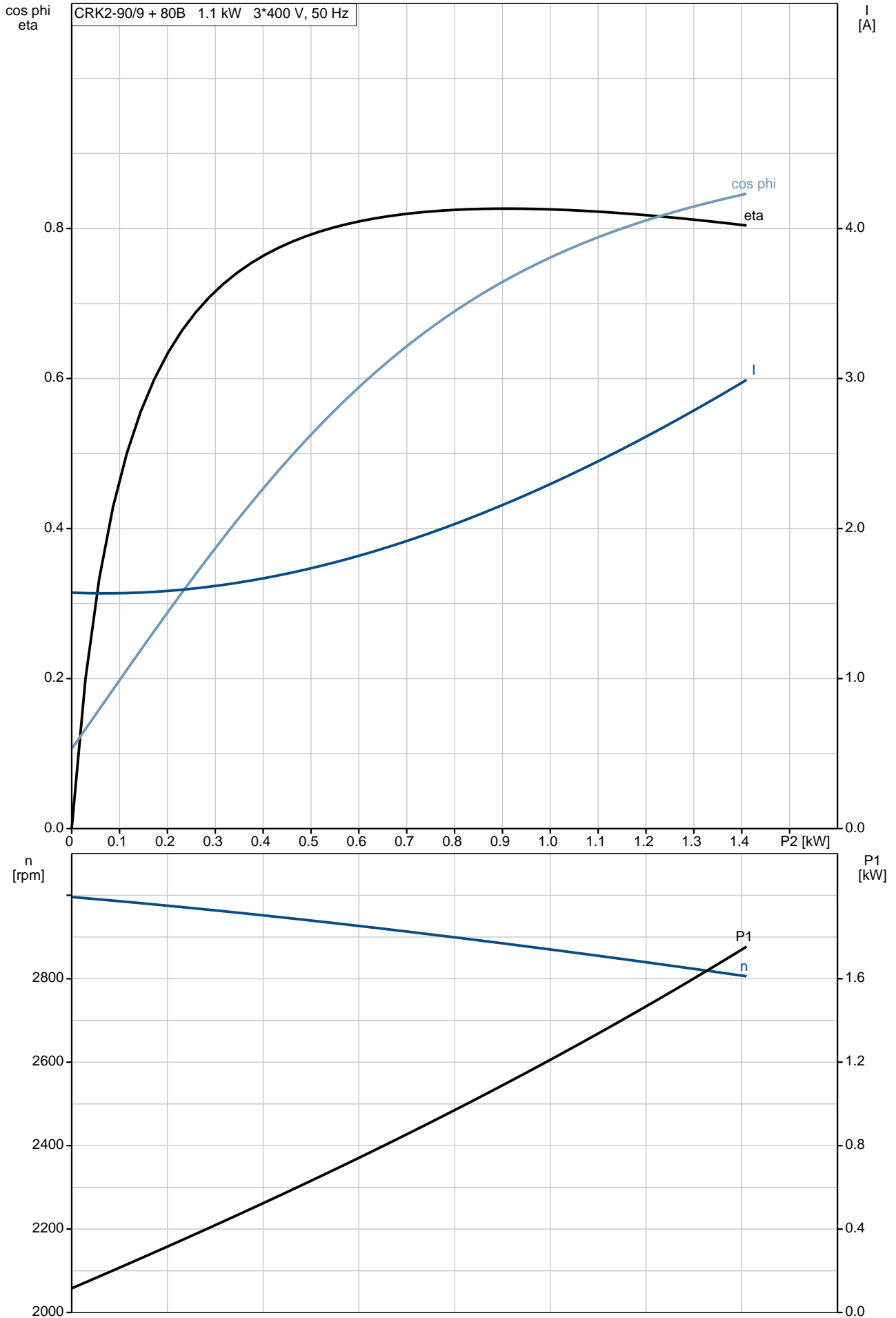
Description	Value
General information:	
Product name:	CRK 2-90/9 A-W-A-AUUV
Product No:	On request
EAN number:	On request
Technical:	
Rated flow:	41.7 l/min
Rated head:	58.6 m
Stages:	9
Impellers:	9
Primary shaft seal:	AUUV
Curve tolerance:	ISO9906:2012 3B
Pump version:	A
Model:	C
Materials:	
Pump head:	Cast iron
	EN-JL1030
	ASTM A48-30 B
Impeller:	Stainless steel
	DIN W.-Nr. 1.4301
	AISI 304
Material code:	A
Installation:	
Maximum ambient temperature:	60 °C
Pipe connection:	G 1 1/4
Flange size for motor:	FT100
Connect code:	W
Liquid:	
Pumped liquid:	Water
Liquid temperature range:	-10 .. 90 °C
Liquid temperature during operation:	20 °C
Density:	998.2 kg/m ³
Electrical data:	
Motor type:	80B
IE Efficiency class:	IE2
Rated power - P2:	1.1 kW
Power (P2) required by pump:	1.1 kW
Mains frequency:	50 Hz
Rated voltage:	3 x 220-240D/380-415Y V
Rated current:	4.45/2.55 A
Starting current:	640-700 %
Cos phi - power factor:	0.84-0.76
Rated speed:	2820-2860 rpm
Motor efficiency at full load:	79.6 %
Motor efficiency at 3/4 load:	84.5 %
Motor efficiency at 1/2 load:	84.5 %
Number of poles:	2
Enclosure class (IEC 34-5):	55 Dust/Jetting
Insulation class (IEC 85):	F
Motor protec:	NONE
Motor No:	85D05105

Others:	
Minimum efficiency index, MEI :	0.70
Net weight:	17 kg

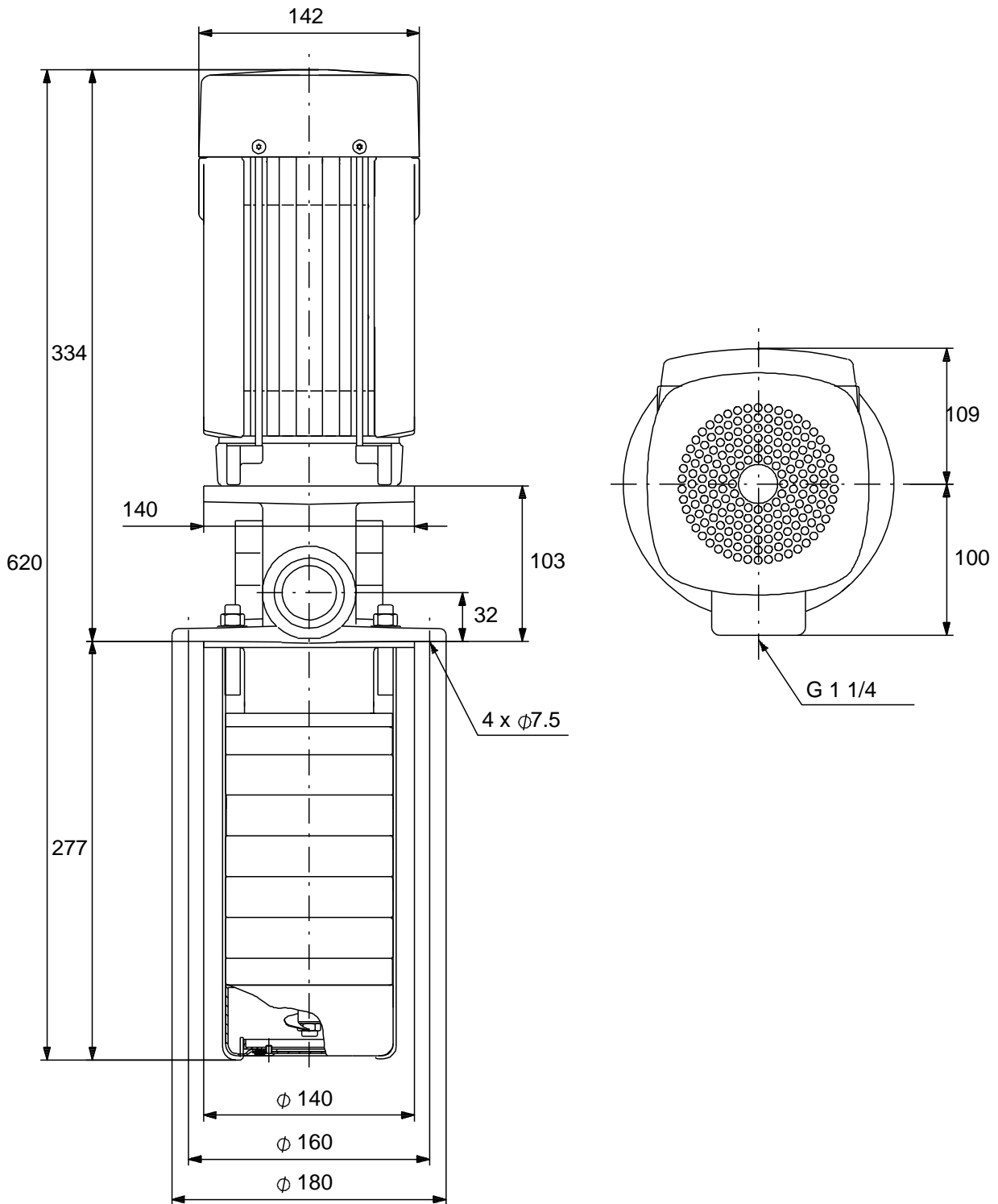


On request CRK 2-90/9 A-W-A-AUUV 50 Hz

CRK2-90/9 + 80B 1.1 kW 3*400 V, 50 Hz

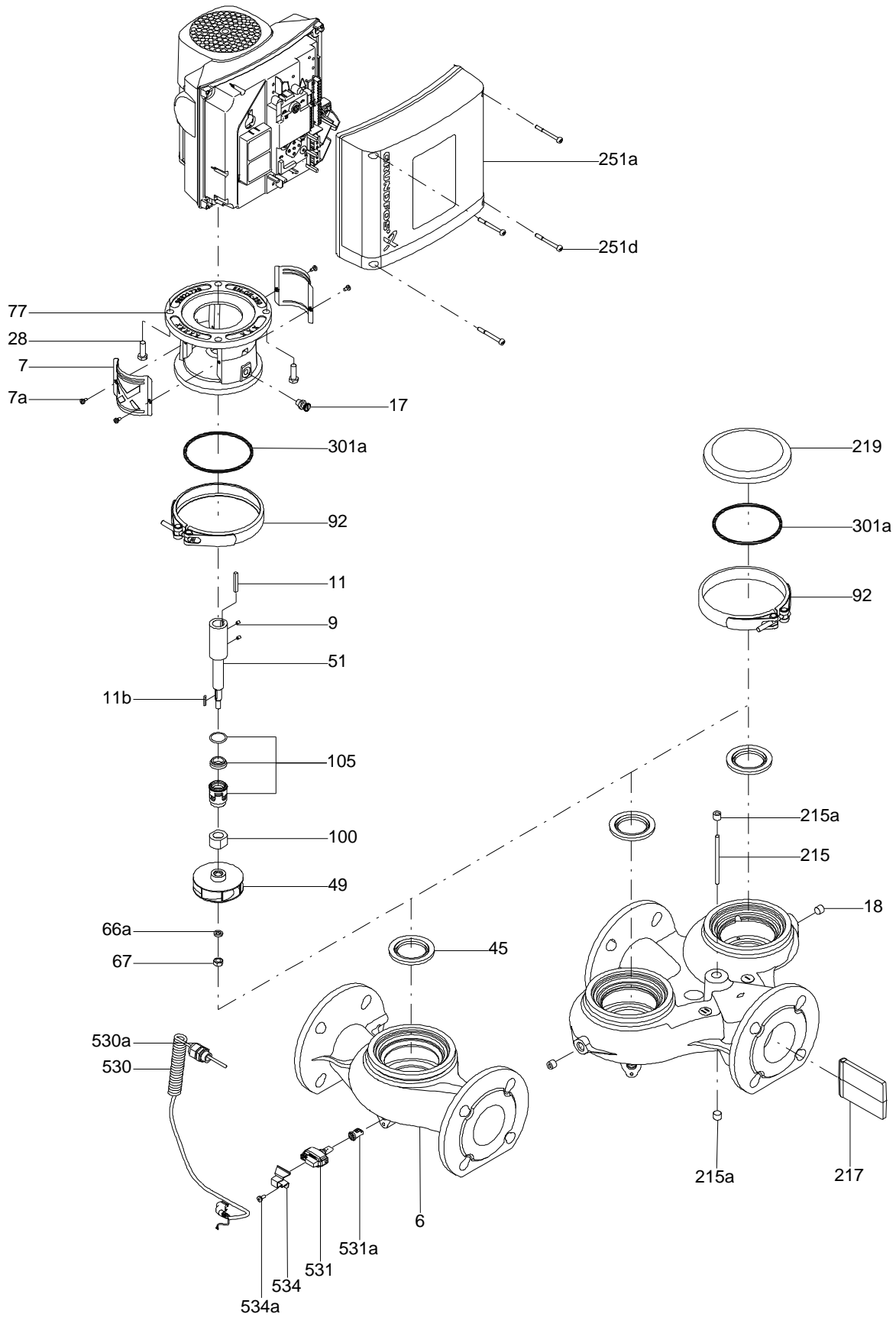


On request CRK 2-90/9 A-W-A-AUUV 50 Hz



Note! All units are in [mm] unless others are stated.
Disclaimer: This simplified dimensional drawing does not show all details.

Exploded view

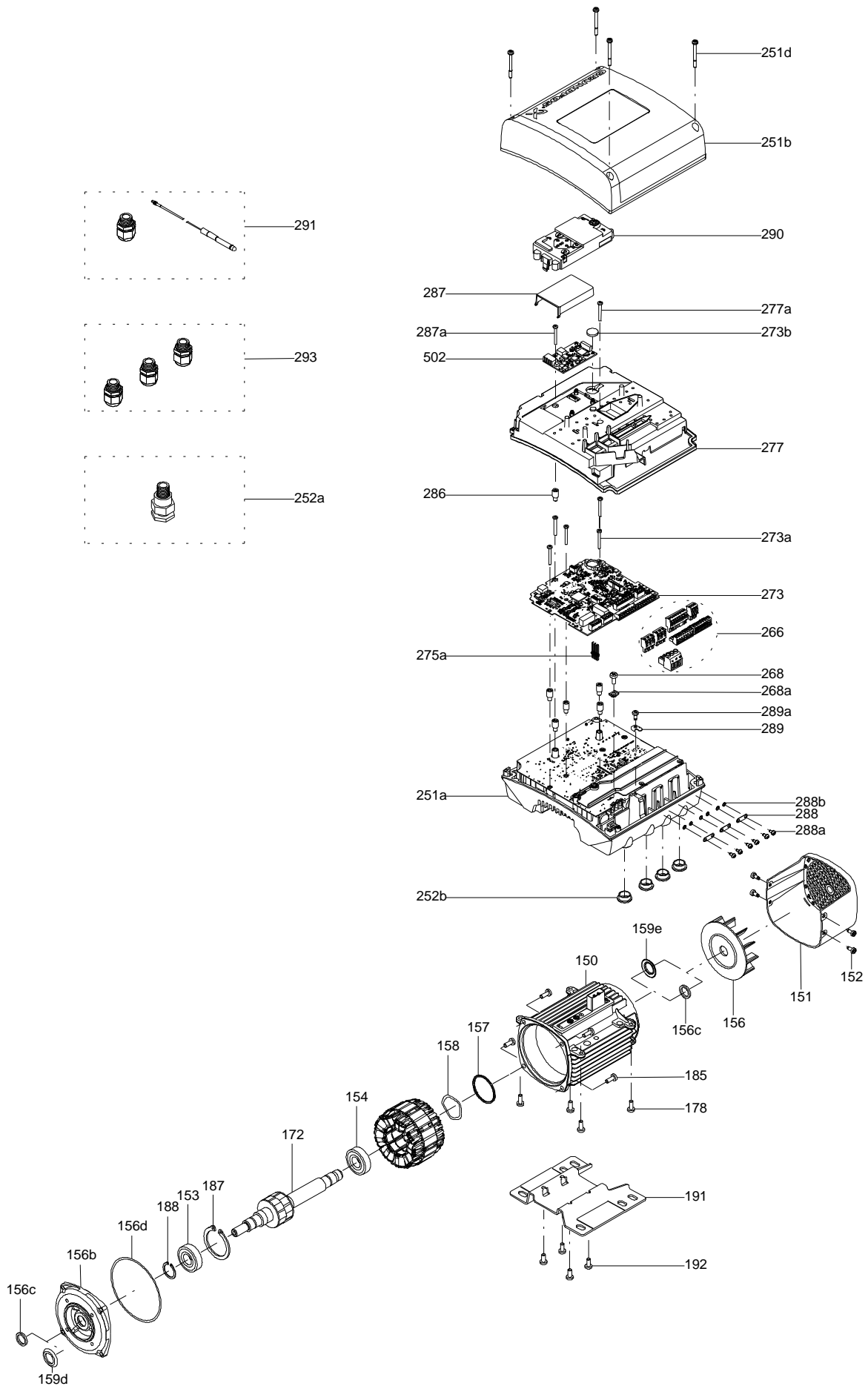


Sectional drawing (TM058200 for TPE2,TPE3)



TM058200

Exploded view (TM057026 for MGE model H/I)



Parts list CRK 2-90/9, Product No. On request
Valid from 1.4.2003 (0314)

Pos	Description	Annotation	Données de classification	Référence	Quantité	Unité
-	Pump w/o motor				1	pcs
+ 2	Pump head				1	
2k	Adapter flange				1	
- 4	Intermediate chamber cpl.				8	
	Intermediate chamber				1	
45	Neck ring				1	
65	Retainer				1	
- 4a	Intermediate chamber cpl.				1	
	Intermediate chamber				1	
45	Neck ring				1	
65	Retainer				1	
- 5a	Chamber, bottom				1	
3a	Intermediate chamber				1	
7	Coupling guard				2	
7a	Pan head screw				4	
9	Hex socket head cap screw		Designation: DIN 912		4	
			Length (mm): 20			
			Thread: M6			
10	Shaft pin		Diameter: 5		1	
			Length (mm): 26			
10a	Coupling half				2	
26	Strap cpl.				4	
28	Hex head screw		Length (mm): 20		4	
			Thread: M6			
36	Lock nut				4	
37	Gasket		Internal diameter: 80,5		1	
			Outer diameter: 87			
			Thickness: 0,4			
37.a	Gasket		Internal diameter: 103,0		1	
			Outer diameter: 110,0			
			Thickness: 0,25			
47a	Bearing ring, rotating		Internal diameter: 13.0		1	
			Outer diameter: 15.2			
			Length (mm): 9.0			
			Material type: TUNGSTEN CARBIDE			
49	Impeller cpl.				8	
49.d	Impeller cpl.				1	
- 51	Pump shaft cpl.		Diameter: 12		1	
			Length (mm): 311MM			
	Pump shaft				1	
62	Retaining ring				1	
61	Spacer for shaft seal				1	
64	Spacing pipe		Internal diameter: 12,7		7	
			Outer diameter: 15,0			
			Length (mm): 17,0			
64.c	Spacing pipe		Internal diameter: 12,7		1	
			Outer diameter: 15			
			Length (mm): 4,15			
64a	Spacing pipe		Internal diameter: 12,7		1	
			Outer diameter: 15,0			
			Length (mm): 7,3			
66	Wedge lock washer				1	
66a	Washer		Internal diameter: 10,5		4	
			Outer diameter: 21			
			Thickness: 2,00			
67	Lock nut		Designation: A2 DIN985		1	
			Thread: M8			
69a	Spacing pipe		Internal diameter: 12,7		1	
			Outer diameter: 15			

Pos	Description	Annotation	Données de classification	Référence	Quantité	Unité
			Length (mm): 40,5			
76	Nameplate				1	
76a	Rivet				2	
84	Strainer				1	
84.b	Combi Slot Torx screw				1	
84c	Disc spring				1	
105	Shaft seal		Material type: AUUV		1	
- 121	Retainer for strainer				1	
	Retainer for strainer				1	
85	Strainer, internal				1	
- 122	Priming screw				1	
	Priming screw				1	
	Spacer				1	
+	Motor				1	pcs

Disclaimer: The information about the Grundfos pump in this document may be outdated.

Data may be subject to alterations without further notice.

Please contact us to verify the data above is still accurate/up-to-date.

All information is copyright Grundfos.



info@lenntech.com

<https://www.lenntech.com>

tel. +31 152 610 900

fax. +31 152 616 289