

Submersible Mixer Type ABS RW 200 and 280

50 Hz

Compact submersible mixer for flushing and cleaning of pump sumps.

Applications

The compact submersible mixers of the RW 200 / RW 280 series are designed for mixing applications in pump sumps, i.e. the prevention of sedimentation deposits and floating scum. They have a maximum continuous running time of one hour, and up to a total of eight hours in every twenty four.

The RW 200 / 280 series can be installed regardless of the tank shape and is suitable for the cleaning of pump sumps up to Ø 5 m or 24 m². Depending on the intensity of mixing required, one or more mixers may be installed.

The optimum flow direction for a particular application can be achieved quite simply by adjusting the mixer position horizontally or vertically ($\pm 30^\circ$) on the mounting bracket.

Horizontal adjustment is not possible in a guide rail installation. In a hanging installation, swivelling in the horizontal plane is facilitated by the conical threaded pipe connection.

The coupling bracket, adjusting plate, and 10 m cable with free cable ends, are supplied as standard.

For optimum selection in general mixing applications the following information is required:

- Application
- Tank / sump dimensions
- Medium to be mixed
- Viscosity and specific weight of medium
- Temperature, dry matter content etc.

Construction

- Water-pressure-tight encapsulated modular motor with cast iron housing, oil chamber and propeller, form a compact, robust, unit construction.
- 3-phase, 4-pole motor, 1 450 minimum r/min, insulation class F, protection class IP 68.
- Rotor shaft supported in lubricated-for-life ball bearings.
- Tandem shaft sealing with lip seal and silicon carbide mechanical seal as standard. Option of viton mechanical seal.
- Patented solids deflection ring protects the mechanical seal from damage by ingress of solid or fibrous matter.
- Blockage-free, cast iron, 2-blade propeller.
- Thermal sensors in the stator give a warning and switch off the unit if excessive temperatures are reached in the motor.
- Maximum allowable temperature of the medium is 40 °C.

Materials

Description	Material
Motor housing	Cast iron EN-GJL-250
Motor shaft	Stainless steel 1.4021 (AISI 420)
Oil chamber	Cast iron EN-GJL-250
Propeller	Cast iron EN-GJL-250
Fasteners	Stainless steel 1.4401 (AISI 316)



Features

- Easy installation
- Small space requirements
- Adjustable bracket allows direction to be altered
- Guide rail mounting option
- Cast iron housing
- Wear-resisting propeller
- High power reserves
- Patented solids deflection ring
- Modular motor
- Available as standard or explosion-proof

Identification code: e.g. RW 2022 13/4 Ex

Hydraulics:

RW.....Mixer series
20Propeller diameter (cm) nominal
2Propeller type
2Hydraulic number

Motor:

13 Motor power P_2 kW x 10
4 Number of poles
Ex Motor version (EX only on request)

Accessories

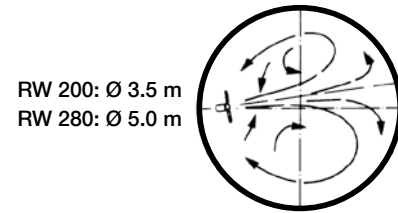
Description	Part no.	
Mounting brackets	wall or floor	62995000
	wall (extended)	62990006
	pipe G 1½"	62990007
	guide rail 60 x 60 mm open	61265048
	guide rail 60 x 60 mm closed	61265049
	guide rail 50 x 50 mm open	61265050
	guide rail 50 x 50 mm closed	61265051
Concrete base	62990008	

Technical Data

RW	2022	2822
Motor	S13/4	S25/4
Propeller diameter [mm]	200	280
Propeller angle	16°	16°
Speed [r/min]	1 450	1 450
Motor power [kW]*	$P_1 = 1.9$ $P_2 = 1.3$	$P_1 = 3.3$ $P_2 = 2.5$
Rated voltage [V]	230 3~, 400 3~	230 3~, 400 3~
Rated current [A]: 230 V 400 V	6.3 3.6	10.1 5.8
Cable type [TL90 07RN-F]	4G1.5 + 3x0.5	4G1.5 + 3x0.5
Cable length [m]	10, 20, 30, 40, 50	10, 20, 30, 40, 50
Weight [kg]	26.0	32.0

* P_1 = Power taken from mains. P_2 = Power at motor shaft.

Maximum Tank Sizes



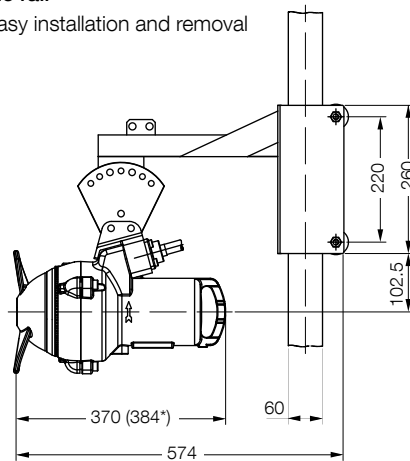
RW 200: 3.0 x 5.0 m
RW 280: 4.0 x 6.0 m



Dimensions (mm)

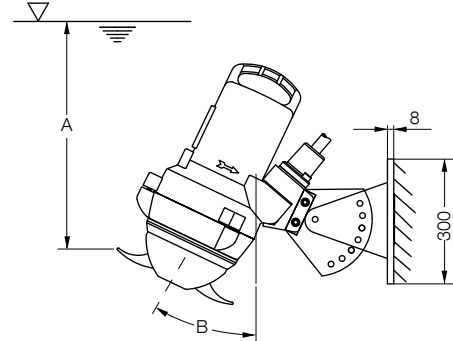
Guide rail

for easy installation and removal



* RW 280

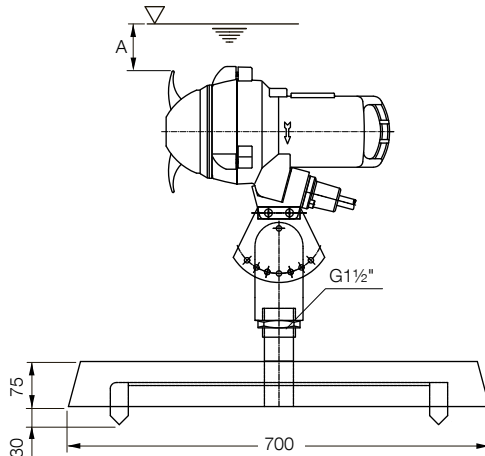
Wall mounted



A = min. 500 mm B = max. 30°

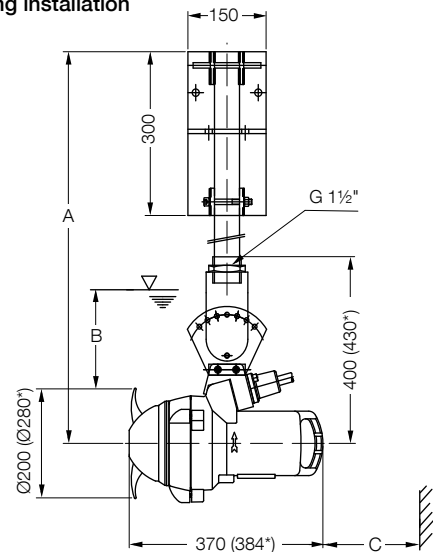
Floor mounted

on moveable concrete base



A = min. 400 mm

Hanging installation



A = max. 2 m B = min. 400 mm C = min. 450 mm

* RW 280

www.sulzer.com

en (27.02.2019), Copyright © Sulzer Ltd 2019

This document does not provide a warranty or guarantee of any kind. Please contact us for a description of the warranties and guarantees offered with our products. Directions for use and safety will be given separately. All information herein is subject to change without notice.

LENNTECH
Water Treatment Solutions
info@lennotech.com Tel. +31-152-610-900
www.lennotech.com Fax. +31-152-616-289