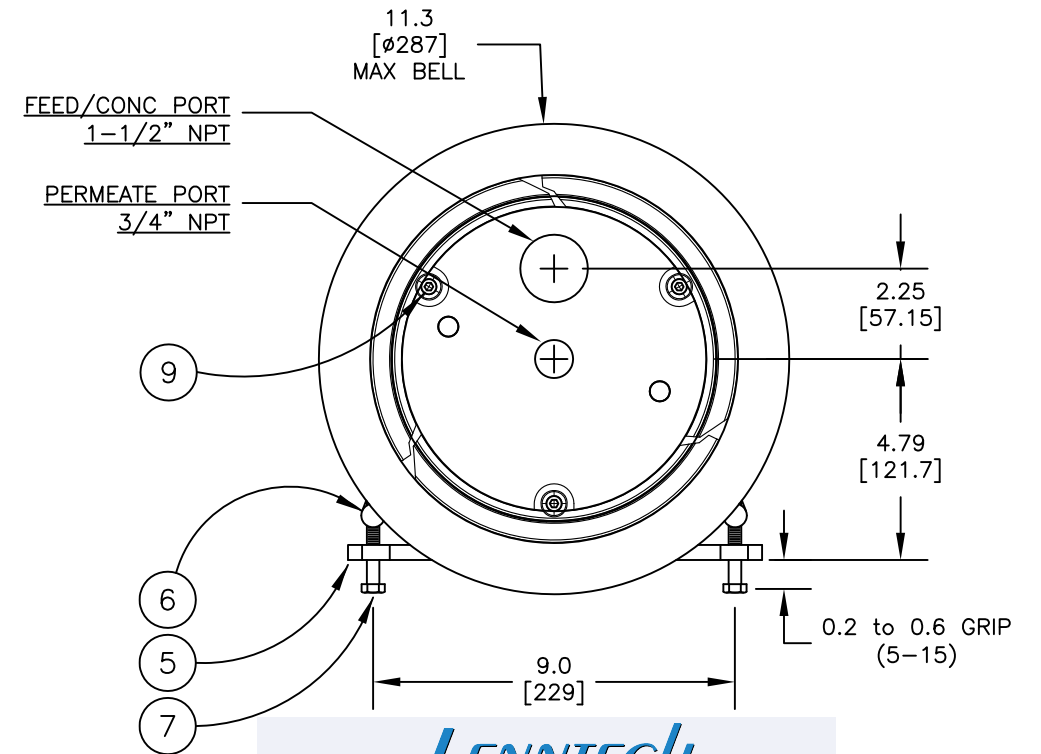
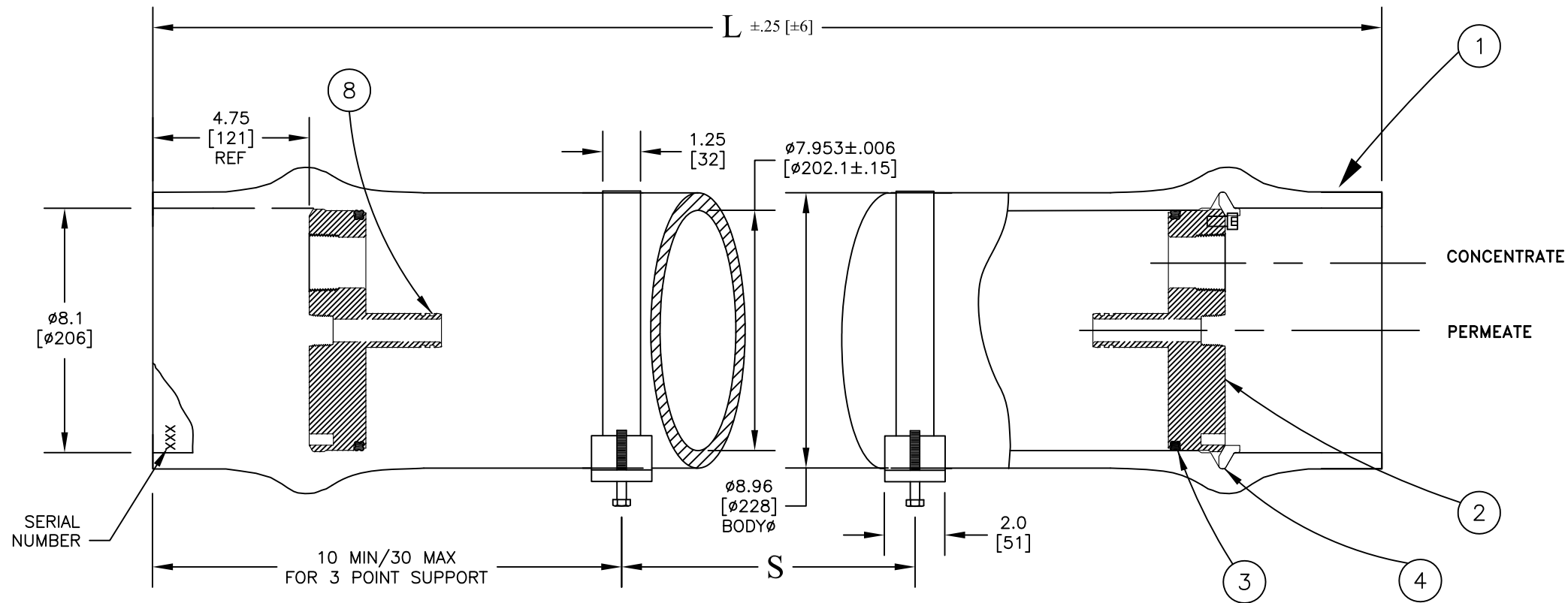


**1800 PSI**  
END PORT



**LENNTECH**  
WATER TREATMENT SOLUTIONS

info@lennotech.com Tel. +31-152-610-900  
www.lennotech.com Fax. +31-152-616-289

**NOTES:**

FOR REFERENCE ONLY, NOT FOR CONSTRUCTION UNLESS CERTIFIED

SHIMMING OF THE SADDLES MAY BE REQUIRED

CENTER VESSEL ON 2 SUPPORTS AT SPAN(S) "S". OPTIONAL 3 POINT SUPPORT QUOTED SEPARATELY FOR SHELL LENGTHS -4 AND LONGER.

INCORRECT MANIFOLDING WILL CAUSE SEVERE LOCAL STRESS AROUND PORT AND MAY RESULT IN LEAKS AND PREMATURE FAILURE. TAKE EVERY PRECAUTION LISTED IN THIS PACKET.

INTERNAL PERMEATE PRESSURE MUST NOT EXCEED 125 PSI.

SPECIFICATIONS SUBJECT TO CHANGE WITHOUT NOTICE



**BPV 8-1800-EP**

ENGR  
DG  
1/10/18  
QLTY  
KK  
1/10/18  
DRAWN  
DG  
1/10/18

ECO	REVISED	DRAWING	REV
N/A	1/10/18	1010053	A2

Shell Length Code	L inch [mm]	S Span In [mm]	Empty Weight lb [kg]
-1	54.5 [1384]	26 [660]	TBD [53]
-2	94.5 [2400]	48 [1219]	TBD [69]
-3	134.5 [3416]	72 [1829]	TBD [87]
-4	174.5 [4432]	96 [2438]	TBD [103]
-5	214.5 [5448]	117 [2972]	TBD [119]
-6	254.5 [6464]	142 [3607]	TBD [136]
-7	294.5 [7480]	3 PTS.	TBD [153]
-8	334.5 [8496]	3 PTS.	TBD [169]

ITEM	QTY	P/N	DESCRIPTION	MATERIAL
1	1	4080XXX	Shell	Filament Wound, Epoxy FRP
2	2	4080533	Head Assembly	ST Super Duplex, SA-790
3	2	6100442MK	Head Seal	Ethylene Propylene
4	6	4080474	Locking Segments	Stainless Steel, 316
5	2	4080175	Support Saddle	Thermoplastic Rubber
6	2	4080137	Strap Assembly	Stainless Steel, 316
7	4	6150001	Strap Screw	Stainless Steel, 18-8
8	4	A/R	PWT Seal	Ethylene Propylene
9	6	6150048	Head Screw	Stainless Steel, 18-8