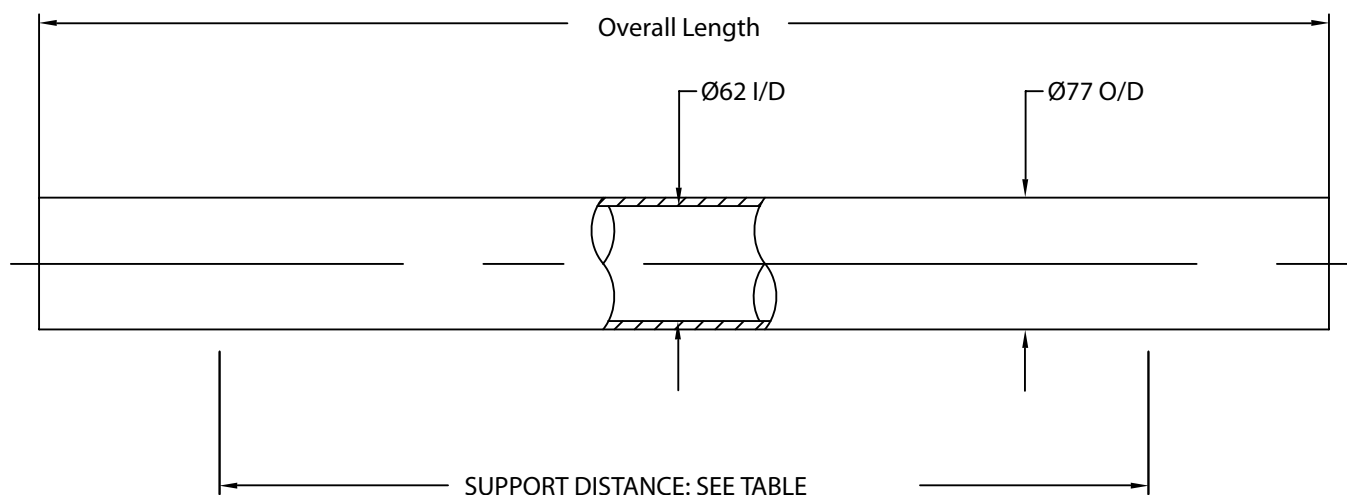


## 2.5" End Port Pressure Vessel 1000 psi (69.0 bar)

**ORDER REFERENCE**  
See Box Below



**Working Pressure:** 1000 psi

**Working Temperature:** -7<sup>0</sup> to 45<sup>0</sup> C

**Assembly Drawing:** 1MNC 1503

**Design Code:** PED

Body of vessel is manufactured completely from glass reinforced epoxy resins. Pressure vessels can be produced to cover all leading manufacturers membranes regardless of length.

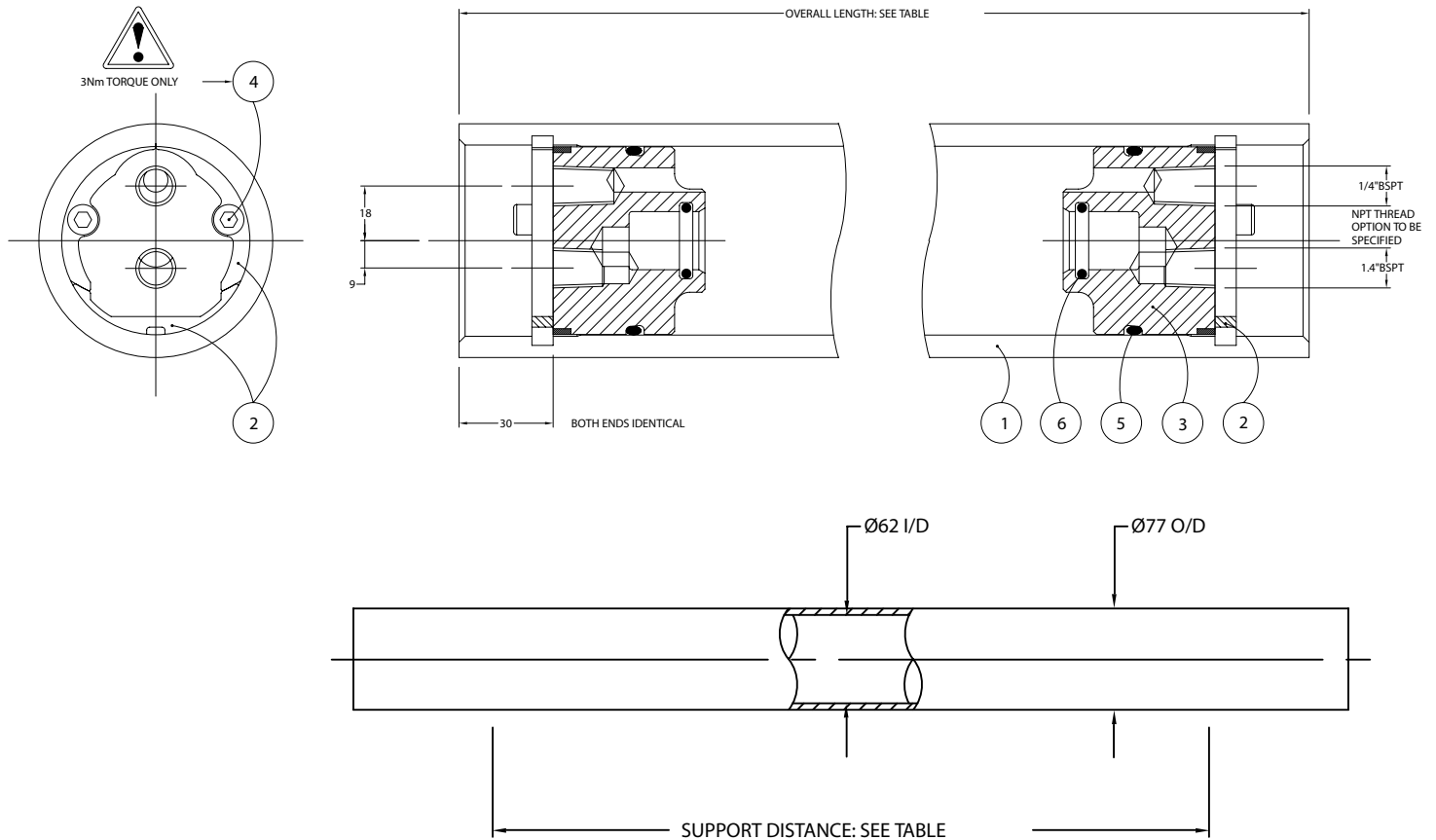
Please advise membrane type and length when requesting further details. Please adhere to recommended support positions, if in doubt contact Phoenix Vessel Technology.

**Feed and concentrate connections:** 1/4" BSPT (Female)

**Product connections:** 1/4" BSPT (Female)

Order Reference	No of 40" Elements	Overall Length +/-4mm	Max Suport Position	Min Support Position	Max Dry Weight
2.5E 1000N.(14)	14"	473	473	100	2.1 kg
2.5E 1000N.(21)	21"	651	550	200	2.8 kg
2.5E 1000N.(40)	40"	1133	1000	400	4.6 kg
2.5E 1000N.(40x2)	40"x2	2149	1500c	860	8.3 kg

## 2.5" End Port Pressure Vessel 1000 psi (69.0 bar)



Item	Description	Material	Part No.	No.off
1	Vessel Body	Glass Fibre Epoxy Resin	BDY 1438	1
2	Retaining Ring Segment	St.Steel 316	CMP 1537	2 Sets of 3
3	End Cap	Thermoplastic	BSPT CMP 1536.A	2
			NPT CMP 1789.A	2
4	Cap Head Screw	St. Steel Grade A4	M6 x CMP 902	4
5	'O' Seal (End Cap)	EPDM Included in item 3	BS227	2
6	'O' Seal (End Cap)	EPDM Included in item 3	BS210	2

The company reserves the right to alter specifications without prior notice.  
This data sheet supersedes all previous issues. Product Code: 2.5E1000N ISSUE:G

### LENNTECH

info@lenntech.com Tel. +31-152-610-900  
www.lenntech.com Fax. +31-152-616-289

For lubricants and general assembly refer to  
the **User Guide** on our website.