



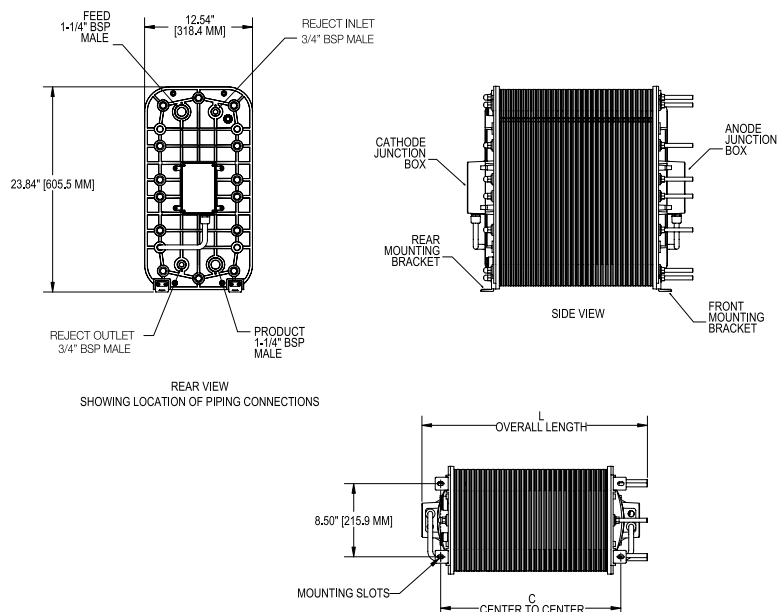
## IONPURE® LX-X INDUSTRIAL CONTINUOUS ELECTRODEIONIZATION (CEDI) MODULES

### IONPURE LX-X — INDUSTRIAL CEDI MODULE

The Ionpure® LX-X industrial modules generate mixed bed deionized water through electrodeionization and are specifically designed for industrial applications. Ionpure modules consistently deliver maximum reliability and superior performance for power, HPI/CPI, general electronics, food and beverage and laboratory applications without regeneration downtime.

### LX-X Series Features

- Double O-ring seal guarantees leak-free operation
- Generate mixed-bed quality deionized water without the use of chemicals
- No need for acid/caustic, neutralization system or exchangeable DI tanks
- Continuous production instead of batch, with consistent quality
- Superior electrical isolation
- 100 psi (7 bar), 113°F (45°C) continuous operation
- Proprietary “all-filled” concentrating compartments eliminate recirculation pump and brine injection
- Significantly lower operating costs, than conventional ion exchange



## OPERATING ENVIRONMENT

Installation should be indoors with no direct sunlight and should have a maximum ambient room temperature of 113°F (45°C).

## QUALITY ASSURANCE STANDARDS

CE marked. Each module is factory tested to meet strict industry standards and is manufactured in an ISO 9001 and ISO 14000 quality and environmental management system.

## Maximum Feed Water Specifications

Feed Water Conductivity Equivalent, including CO <sub>2</sub> and Silica	< 40 µS/cm
Feed Water Source	RO permeate
Temperature	41 - 113°F (5 - 45°C)
Inlet Pressure	100 psi (7 bar)
Maximum Total Chlorine (as Cl <sub>2</sub> )	< 0.02 ppm
Iron (as Fe)	< 0.01 ppm
Manganese (as Mn)	< 0.01 ppm
Sulfide (S <sup>2-</sup> )	< 0.01 ppm
pH	4 - 11
Total Hardness (as CaCO <sub>3</sub> )	< 1.0 ppm
Dissolved Organics (TOC as C)	< 0.5 ppm
Silica (SiO <sub>2</sub> )	< 1.0 ppm

## Physical Specifications

Item Number	Dimensions	
	L +/- 0.25" (6.4 mm)	C +/- 0.13" (3.2 mm)
LXM04X	10.12" (257 mm)	5.78" (146.8 mm)
LXM10X	13.69" (347.7 mm)	9.28" (235.7 mm)
LXM18X	19.22" (488.2 mm)	13.93" (353.8 mm)
LXM24X	23.69" (601.7 mm)	17.43" (442.7 mm)
LXM30X	27.42" (696.5 mm)	20.92" (531.3 mm)
LXM45X	35.72" (907.3 mm)	29.44" (747.7 mm)

## Typical Module Performance

### Operating Parameters

Recovery	90 - 95%
Maximum Feed Pressure	100 psi (7 bar)
Pressure Drop Range at Nominal Flow	20 - 30 psi (1.4 - 2.1 bar)
Maximum Feed Temperature	113°F (45°C)
DC Voltage	0 - 600
DC Amperage	0 - 6.0

### Product Water Quality

Product Resistivity	> 16 megohm-cm*
Silica (SiO <sub>2</sub> ) Removal	90 - 99%, depending on feed conditions

\*Actual performance may be determined using the IP-Pro projection software available from Ionpure.

## FLOW AND PHYSICAL SPECIFICATIONS

Model Number	Product Flow min. gpm (m <sup>3</sup> /hr)	Product Flow nominal gpm (m <sup>3</sup> /hr)	Product Flow max. gpm (m <sup>3</sup> /hr)	Shipping Weight lbs (kg)	Operating Weight lbs (kg)
IP-LXM04X	1.0 (0.22)	2.0 (0.44)	3.0 (0.67)	150 (68)	100 (45)
IP-LXM10X	2.5 (0.55)	5.0 (1.1)	7.5 (1.65)	200 (91)	150 (68)
IP-LXM18X	4.5 (1.1)	9.0 (2.0)	13.5 (3.1)	220 (100)	170 (77)
IP-LXM24X	6.3 (1.4)	12.5 (2.8)	18.8 (4.2)	250 (113)	200 (91)
IP-LXM30X	7.5 (1.65)	15.0 (3.3)	22.5 (5.11)	270 (123)	220 (100)
IP-LXM45X	11.3 (2.55)	22.5 (5.1)	33.8 (7.67)	320 (145)	270 (122.5)



**LENNTECH**

info@lenntech.com Tel. +31-152-610-900  
www.lenntech.com Fax. +31-152-616-289

Ionpure is a trademark of Evoqua, its subsidiaries or affiliates, in some countries.

All information presented herein is believed reliable and in accordance with accepted engineering practices. Evoqua makes no warranties as to the completeness of this information. Users are responsible for evaluating individual product suitability for specific applications. Evoqua assumes no liability whatsoever for any special, indirect or consequential damages arising from the sale, resale or misuse of its products.

© 2014 Evoqua Water Technologies LLC Subject to change without notice ION-LXX-DS-0514