

# Data Sheet



Brackish Water  
Reverse Osmosis (RO) Membranes

**LG BW 400 AFR**  
Anti-Fouling, High Rejection

## Overview

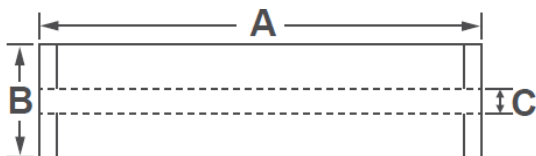
LG Chem's NanoH<sub>2</sub>O™ brackish water RO membranes serve various municipal and industrial applications and have been operating in the major utilities around the world. Incorporating innovative Thin Film Nanocomposite (TFN) technology, all LG BWRO membranes provide superior performance along with intrinsic anti-fouling property and are suitable for applications where consistent and reliable performance is a must.

LG BW 400 AFR membranes offer a combination of enhanced fouling resistance and high rejection: suitable for brackish water and water reuse applications with a challenging feed water.

## Product Specifications

Active Membrane Area, ft <sup>2</sup> (m <sup>2</sup> )	Permeate flow rate, GPD (m <sup>3</sup> /d)	Stabilized Salt Rejection, %	Minimum Salt Rejection, %	Feed Spacer, mil
400 (37)	10,500 (39.7)	99.6	99.5	34

Test Conditions : 2,000 ppm NaCl at 25°C (77°F), 225 psi (15.5 bar), pH 7, Recovery 15%.  
Permeate flows for individual elements may vary +25% / -15%.



A, mm (in.)	B, mm (in.)	C, mm (in.)	Weight, kg (lbs.)
1,016 (40)	200 (7.9)	28.6 (1.125)	16 (35)

All dimensional information is indicative and for reference purpose only. Please contact LG Chem for detailed technical specification.

## Operating Specifications

Max. Applied pressure	600 psi (41 bar)
Max. Chlorine concentration	< 0.1 ppm
Max. Operating temperature	45°C (113°F)
pH Range, Continuous (Cleaning)	2-11 (2-12)
Max. Feedwater turbidity	1.0 NTU
Max. Feedwater SDI (15 mins)	5.0
Max. Feed flow	75 gpm (17 m <sup>3</sup> /h)
Max. Pressure drop (ΔP) for each element	15 psi (1.0 bar)

The information and data contained herein are deemed to be accurate and reliable and are offered in good faith, but without guarantee of performance. LG Chem assumes no liability for results obtained or damages incurred through the application of the information contained herein. Customer is responsible for determining whether the products and information presented herein are appropriate for the customer's use and for ensuring that customer's workplace and disposal practices are in compliance with applicable laws and other governmental enactments. Specifications subject to change without notice. NanoH<sub>2</sub>O is the Trademark of The LG Water Solutions or an affiliated company of LG Chem. All rights reserved. © LG Chem, Ltd.



info@lenntech.com Tel. +31-152-610-900  
www.lenntech.com Fax. +31-152-616-289

Rev. M (09.27)

