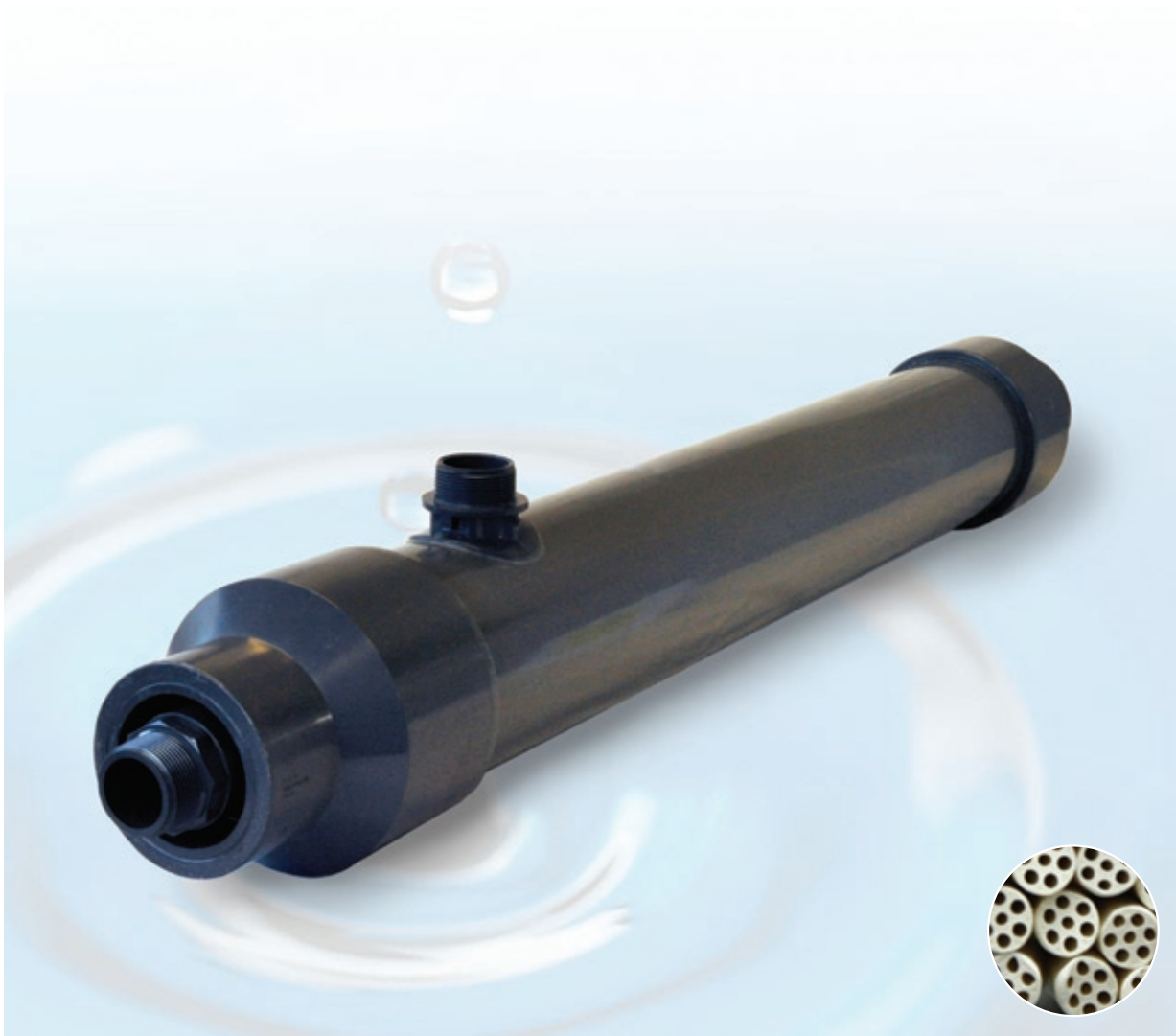
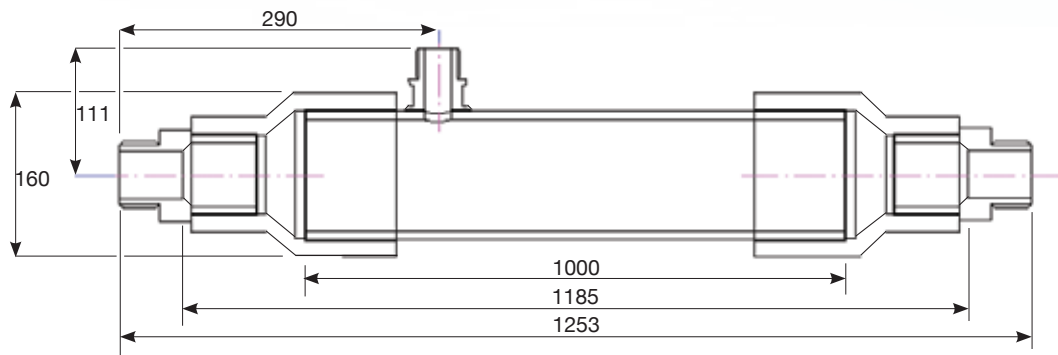


Ultrafiltration element

6100 UF/MB/TAP



Ultrafiltration element

6100 UF/MB/TAP

Specifications 6100 UF/MB/TAP		SI		US	
Element data					
Material housing			PVC		PVC
Material connector			PVC		PVC
Housing length	mm	1000 +/- 2,0		inch	30
Element length**	mm	1185 +/- 3,0		inch	35
Element length	mm	1253 +/- 3,0		inch	37
Distance permeate connector-feed connector**	mm	256 +/- 2,0		inch	9
Distance permeate connector-feed connector	mm	290 +/- 2,0		inch	10
Distance permeate connector-element center	mm	111 +/- 2,0		inch	0
Permeate connection male OD		1½"			1½"
Feed connection male OD		1½"			1½"
Housing OD	mm	140		inch	6
Element OD	mm	160		inch	6
Endcaps ID**	mm	50		inch	2
Weight	kg	9,8		lbs	22
Membrane Type					
Material		PES			PES
Type		SevenBore®			SevenBore®
Diameter bores ID	mm	0,9		inch	0,04
Diameter fiber OD	mm	4,0		inch	0,16
MWCO		kD 100-150			kD 100-150
Area	m²	12		ft²	129
Typical Process Conditions					
Maximum operating temperature	°C	40		°F	104
Maximum system pressure	bar	10		psi	145
Trans membrane pressure operation	bar	< 1,0		psi	< 14,5
maximum	bar	2,5		psi	36
Productivity clean water at 25° C (77°F)	l/m²barh	1300-1600		gfd/psi	53-65
process	l/m²h	100 to 350		gfd	60 to 210
backwash/forward flush	l/m²h	250		gfd	150
Permeate flow at 100 l/m² h	m³	1,2		gpm	5
pH range during operation		3-10			3-10
Cleaning					
Soaking time during cleaning		min 5			
pH range during cleaning		1-13			
Disinfecting chemicals	hypochlorite (NaOCl)	ppm 50-200			
	hydrogenperoxide (H₂O₂)	ppm 100-200			

** without screw ends (provided separately)

modifications reserved

LENNTECH
WATER TREATMENT SOLUTIONS

info@lennotech.com Tel. +31-152-610-900
www.lennotech.com Fax. +31-152-616-289

IMT
revision februari 2011