

65. RCME

50/60 Hz

The service kits below apply to RCME systems with the following product number:

- RCME0503.

Controller, CU 361

Pos.	Description/Kit no	98102600
6	Controller, CU 361 (programmed)	1

Mains water valve

Pos.	Description/Kit no	98102588
12	Mains water valve, complete	1

Mains water valve coil

Pos.	Description/Kit no	98102588
12a	Mains water valve coil incl. plug	1

Mains water valve diaphragm

Pos.	Description/Kit no	98102590
12b	Mains water valve diaphragm	1

Power supply, 24 VDC

Pos.	Description/Kit No	98102595
1	Power supply, 24 VDC	1

The service kits below apply to RCME systems with the following product numbers:

- 98442752
- 98442754.

Controller, CU 372

Pos.	Description/Kit no	98146954
6	Controller, CU 372 (programmed)	1

Mains water valve

Pos.	Description/Kit no	98102594
12	Mains water valve, complete	1

Mains water valve coil

Pos.	Description/Kit no	98102599
12a	Mains water valve coil incl. plug	1

The service kits below apply to RCME systems with the following product numbers:

- RCME0503
- 98442752
- 98442754.

Ball valve

Pos.	Description/Kit no	98102603
25	Ball valve and tank adaptor	1

Booster pump sensor

Pos.	Description/Kit no	98102593
4	Booster pump sensor	1

Booster tank level sensor

Pos.	Description/Kit no	98102586
5	Booster tank level sensor	1

Cable for booster tank level sensor

Pos.	Description/Kit no	98102587
5a	Cable for booster tank level sensor	1

Drain cock

Pos.	Description/Kit no	98102604
26	Drain cock	1

Flow sensor

Pos.	Description/Kit no	98102601
7	Flow sensor, 2.9 m cable	1

Flow sensor pipe

Pos.	Description/Kit no	98102602
7a	Flow sensor pipe incl. O-rings, nipples and unions	1

Ground tank level sensor

Pos.	Description/Kit no	98102596
8	Ground tank level sensor	1

Lid for booster tank

Pos.	Description/Kit no	98102585
3	Lid for booster tank	1

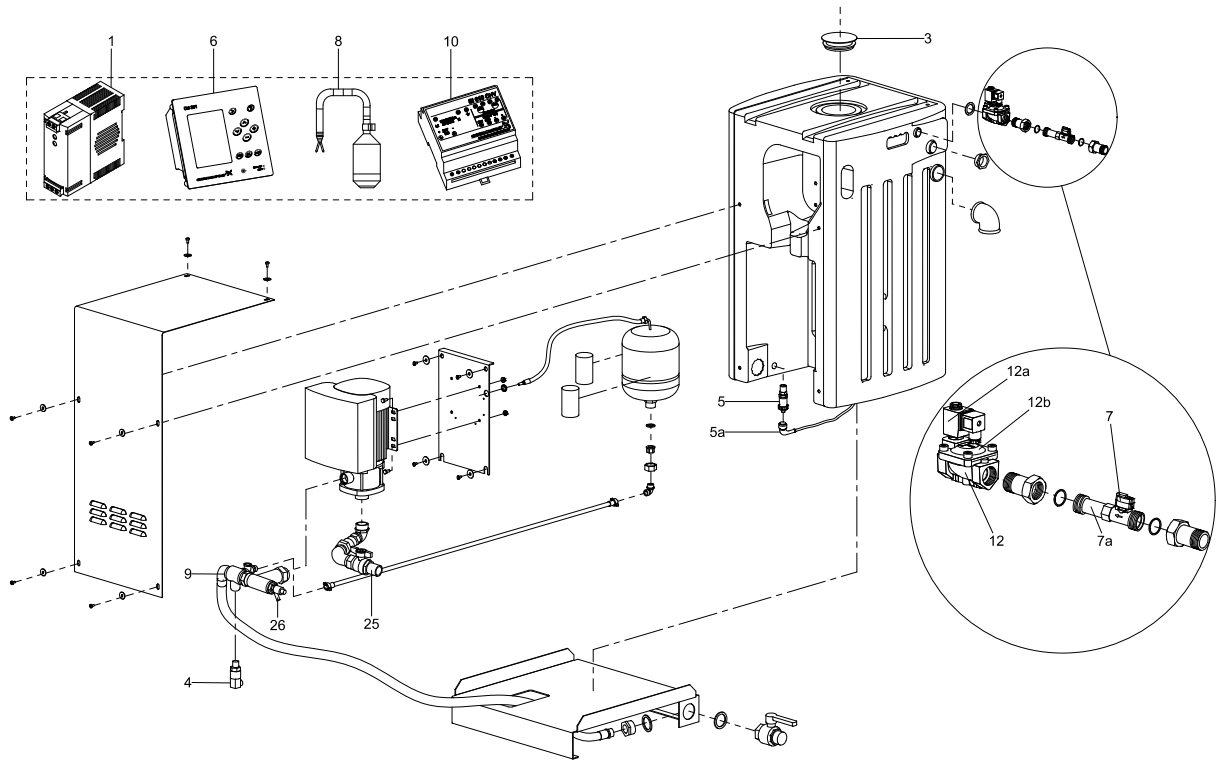
Non-return valve

Pos.	Description/Kit no	98102591
9	Non-return valve	1

Sensor interface module

Pos.	Description/Kit no	98102598
10	Sensor interface module, SI 010 CNV	1

RCME



TM05 6019 4713