

ECOCART Single Cartridge Filter Housings

ECOCART (EKF) "E" series cartridge filters are made for double open end (DOE) cartridges. Manufactured in SS 304, they consist of a head and a sump, connected by a center rod with a cap nut. Head, sump, head and cap nut are sealed with flat ring gaskets.

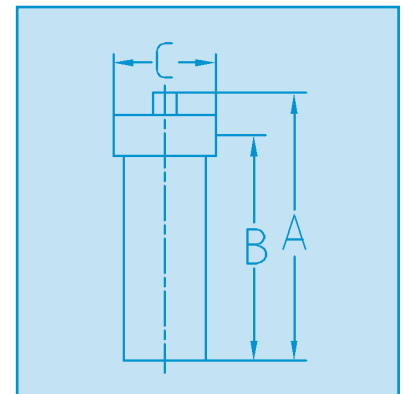
The sump is equipped with a bottom drain. An optional bracket is available for mounting the filter to the wall.

Technical Data:

ECOCART Type	EKF-109-E	EKF-120-E	EKF-130-E
Max. Flow Rate (m ³ /h)	2.4	4.8	4.8
Max. Operating Conditions (bar/°C)	10/121	10/121	10/121
Housing Dimensions (mm)	A	349	603
	B	281	535
	C	105	105
Volume (l)	1.47	2.9	4.4
Weight (kg)	3.5	4.5	5.5
Inlet/Outlet (BSP female)	1"	1"	1"
Drain (NPT female)	3/16"	3/16"	3/16"
Length of Filter Cartridge	9 3/4" = 248 mm	20" = 508 mm	30" = 762 mm
No. of Filter Cartridges	1	1	1
Max. Cartridge Outside Diameter	72 mm	72 mm	72 mm



Series EKF "E"



ECOCART "BE" series cartridge filters are made of brass (head and union nut) and SS 304 (sump) for the use with DOE filter cartridges. The union nut is pulled over the sump and screwed to the head. The sump and head are sealed by a NBR head O-ring. The O-ring can also be supplied in FPM. An optional bracket is available for wall mounting.

Technical Data:

ECOCART Type	EKF-109-BE-3/4 EKF-109-BE-1	EKF-120-BE-3/4 EKF-120-BE-1
Max. Flow Rate (m ³ /h)	2.4	4.8
Max. Operating Conditions (bar/°C)	17/121	17/121
Housing Dimensions (mm)	A	337
	B	317
	C	114
Volume (l)	1.5	2.97
Weight (kg)	3.5	4.5
Inlet/Outlet (BSP female)	3/4" or 1"	3/4" or 1"
Drain (NPT female)	1/8"	1/8"
Length of Filter Cartridge	9 3/4" = 248 mm	20" = 508 mm
No. of Filter Cartridges	1	1
Max. Cartridge Outside Diameter	72 mm	72 mm



Series EKF "BE"

