



Submittal Data Information

KV Series Vertical Close Coupled Pumps

301-1054

EFFECTIVE: JANUARY 8, 2010

SUPERSEDES: NOVEMBER 1, 2009

1160 RPM MODEL 4013

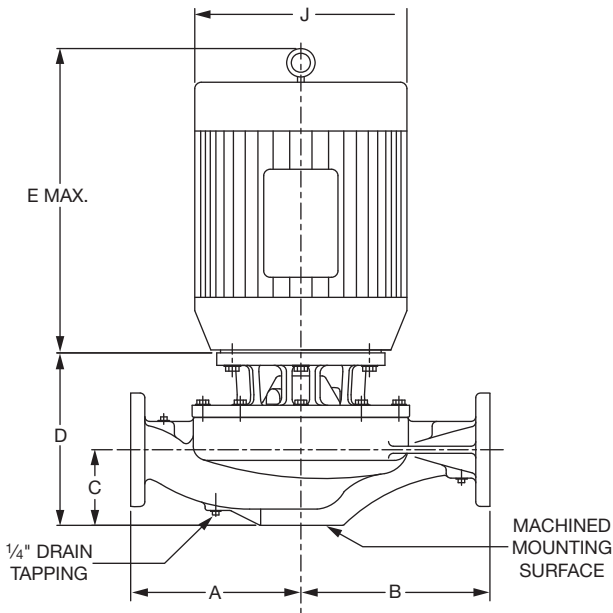
JOB _____ ENGINEER _____

CONTRACTOR _____ REP. _____

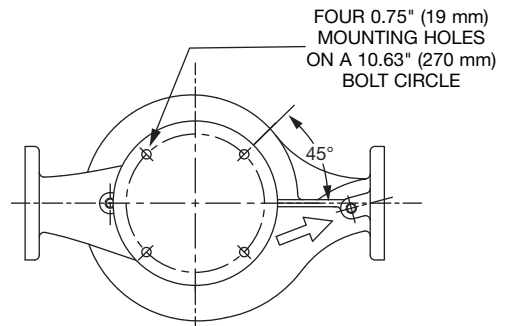
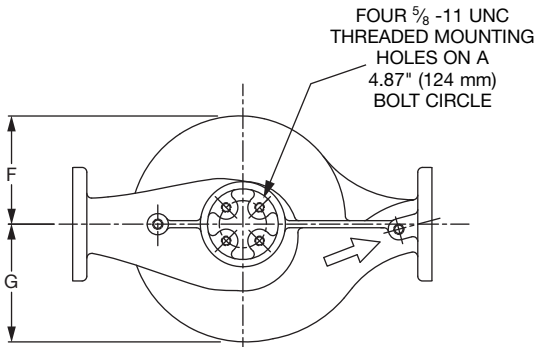
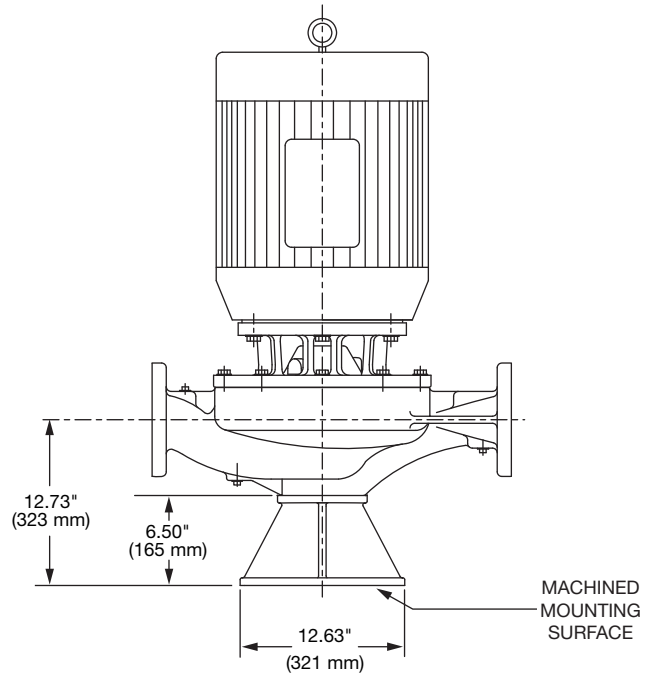
| ITEM NO. | MODEL NO. | IMPELLER DIA. | G.P.M. | HEAD/FT. | H.P. | ELEC. CHAR. |
|----------|-----------|---------------|--------|----------|------|-------------|
|----------|-----------|---------------|--------|----------|------|-------------|



WEIGHT _____ PUMP/MOTOR _____



PUMP WITH OPTIONAL SUPPORT STAND



DIMENSIONS

*A & B Dimensions apply for all pump sizes.

| Model No. | Conn. | Motor Frame | HP 1160 RPM | Flange Size ASA | A* | B* | C | D | E MAX | F | G | H | J DIA |
|-----------|----------------------|-------------|-------------|-----------------|-------------------------------------|-------------------------------------|---------------|-------------|-------------|---------------|---------------|-------------|-------------|
| 4013 | 4 x 4 (102 x 102) | 184JM | 2 | 4 (102) | 15.50 (394) if ANSI Class 125 | 15.50 (394) if ANSI Class 125 | 6.23 (158) | 10.89 (277) | 15.58 (396) | 8.53 (217) | 9.52 (242) | 0.25 (6) | 7.88 (200) |
| | | 213JM | 3 | | | | | 11.07 (281) | 16.68 (424) | | | | 9.56 (243) |
| | | 215JM | 5 | | | | | 11.07 (281) | 18.18 (462) | | | | 9.56 (243) |
| | | 254JM | 7.5 | | | | | 11.70 (297) | 17.83 (453) | | | | 12.94 (329) |
| | | 256JM | 10 | | | | | 11.70 (297) | 19.91 (506) | | | | 12.94 (329) |
| | | | | | | | | | | | | | |

English dimensions are in inches. Metric dimensions are in millimeters. Metric data is presented in ().
Do not use for construction purposes unless certified.

MATERIALS OF CONSTRUCTION

| Item | BRONZE FITTED | | ALL IRON | |
|-----------------|------------------------------|---|------------------------------|---|
| | Standard Pump Construction | Optional | Standard | Optional |
| Casing | Cast Iron ASTM A48 Class 30A | N/A | Cast Iron ASTM A48 Class 30A | N/A |
| Impeller | Bronze ASTM B584-836 | CF | Cast Iron ASTM A48 Class 30A | CF |
| Wear Ring | None | Bronze ASTM B584-932 SAE660 | None | N/A |
| Shaft | Carbon Steel | St. Steel AISI 416 ASTM A582 | Carbon Steel | St. Steel AISI 416 ASTM A582 |
| Shaft Sleeve | Bronze ASTM B584-932 SAE660 | St. Steel AISI 303 ASTM A276 | St. Steel AISI 303 ASTM A276 | CF |
| Mechanical Seal | Ceramic / EPT | Tungsten Carbide / EPT | Ceramic / EPT | Tungsten Carbide / EPT |
| Seal Flush Line | Copper | CF | Stainless Steel | CF |
| Support Stand | N/A | Ductile Iron ASTM A536-84 Grade: 65-45-12 | N/A | Ductile Iron ASTM A536-84 Grade: 65-45-12 |

CF - Consult Factory

N/A - Not Available

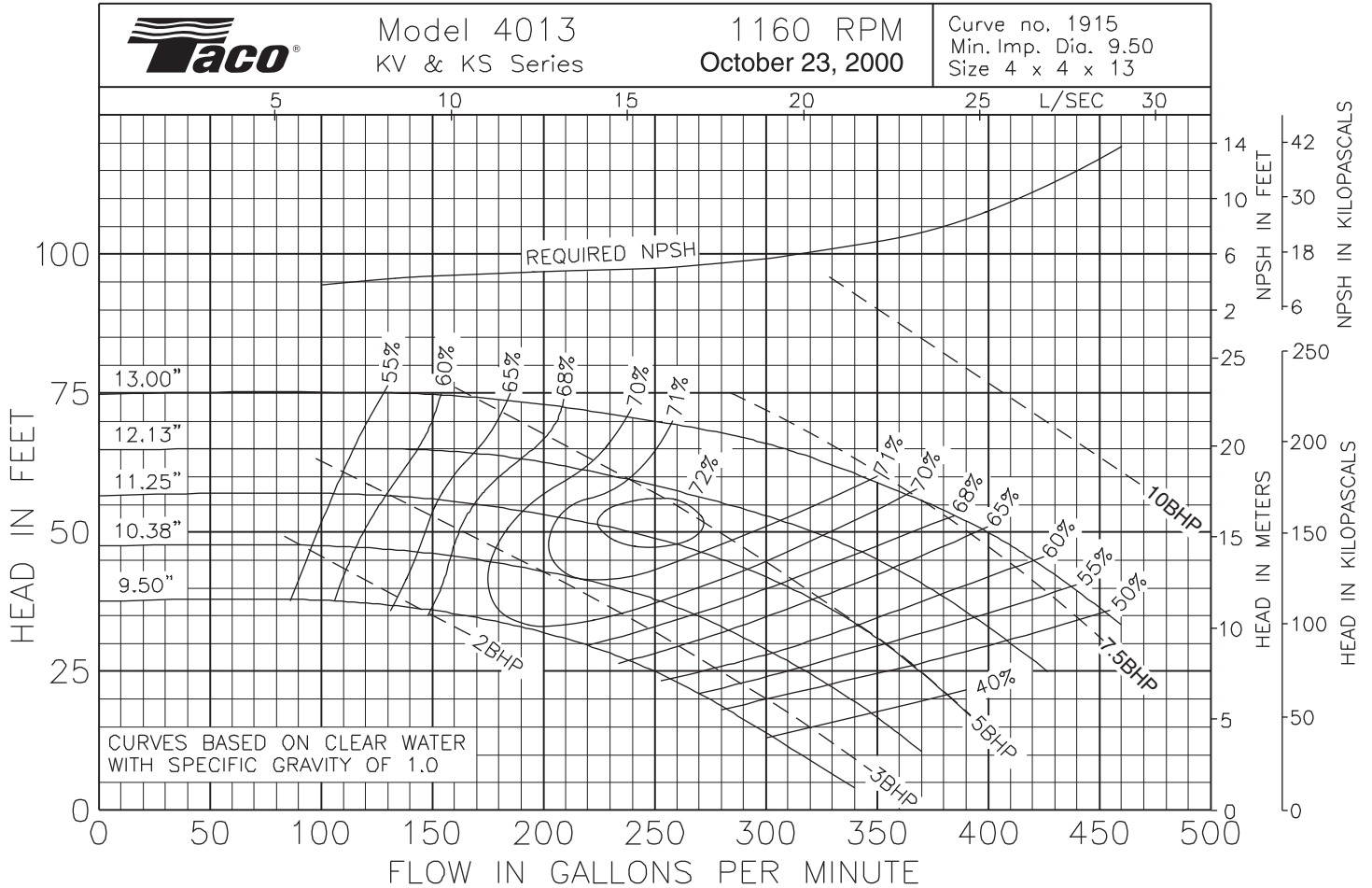
OPERATING SPECIFICATIONS

| | Standard | | Optional |
|-------------|----------------------|-----------------------|----------|
| | ANSI Class 125 | ANSI Class 250 | |
| Flange | | | |
| Pressure | 175 PSIG* (1210 KPA) | 300 PSIG** (2070 KPA) | CF |
| Temperature | 250°F (120°C) | 250°F (120°C) | CF |

Motors: All NEMA Standard (T Frame)
 * In accordance with ANSI Standard B16.1 Class 125
 ** In accordance with ANSI Standard B16.1 Class 250 Dim.

MAXIMUM ASSEMBLY WEIGHT

| Motor Frame | Weight without Optional Stand Lbs (Kg) | Weight with Optional Stand Lbs (Kg) |
|---------------|--|-------------------------------------|
| 182JM - 184JM | 333 (151) | 380 (172) |
| 213JM - 215JM | 378 (171) | 425 (193) |
| 254JM - 256JM | 532 (241) | 579 (263) |





Submittal Data Information

KV Series Vertical Close Coupled Pumps

301-1061

EFFECTIVE: MAY 1, 2010

SUPERSEDES: JANUARY 8, 2010

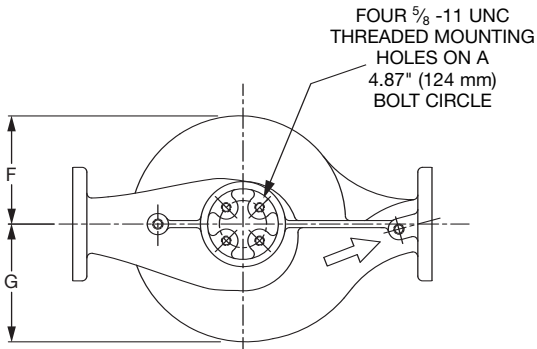
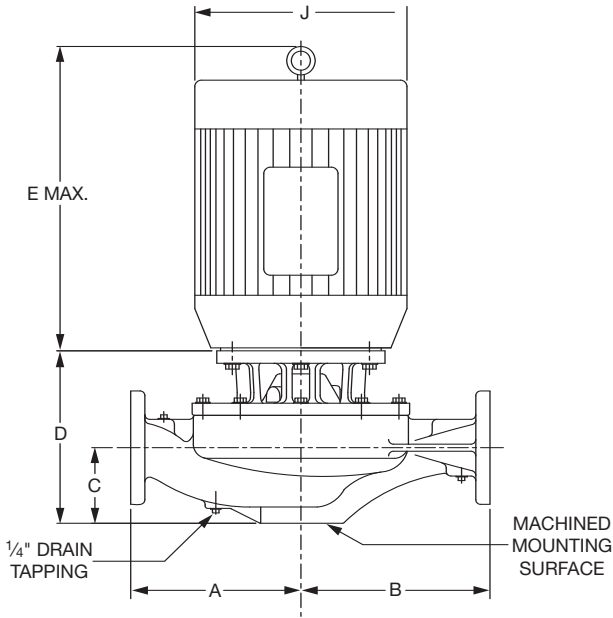
1760 RPM MODEL 4013

JOB _____ ENGINEER _____

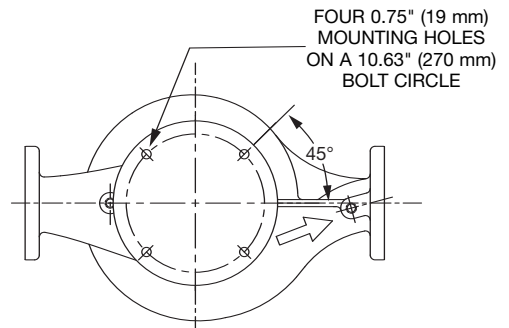
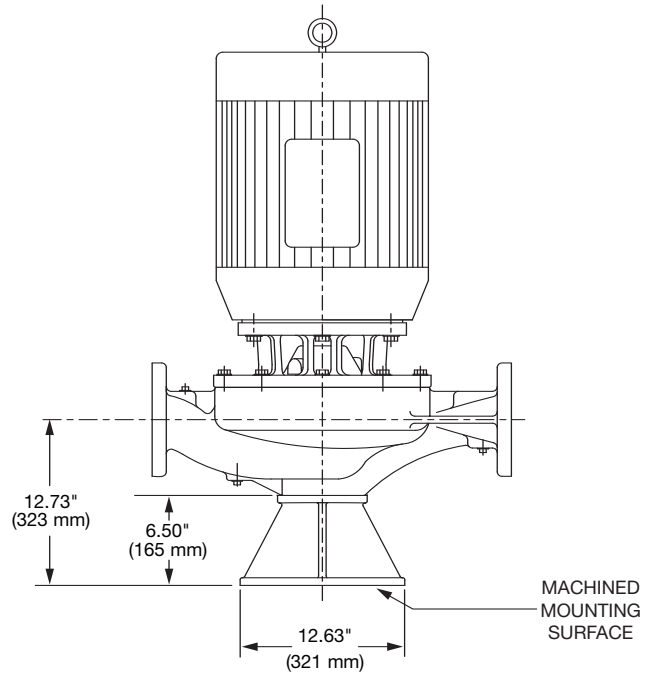
CONTRACTOR _____ REP. _____

| ITEM NO. | MODEL NO. | IMPELLER DIA. | G.P.M. | HEAD/FT. | H.P. | ELEC. CHAR. |
|----------|-----------|---------------|--------|----------|------|-------------|
|----------|-----------|---------------|--------|----------|------|-------------|

WEIGHT _____ PUMP/MOTOR _____



PUMP WITH OPTIONAL SUPPORT STAND



DIMENSIONS

*A & B Dimensions apply for all pump sizes.

| Model No. | Conn. | Motor Frame | HP 1760 RPM | Flange Size ASA | A* | B* | C | D | E MAX | F | G | H | J DIA |
|-----------|----------------------|-------------|-------------|-----------------|-------------------------------------|-------------------------------------|---------------|-------------|-------------|---------------|---------------|-------------|-------------|
| 4013 | 4 x 4 (102 x 102) | 213JM | 7.5 | 4 (102) | 15.50 (394) if ANSI Class 125 | 15.50 (394) if ANSI Class 125 | 6.23 (158) | 11.07 (281) | 16.68 (424) | 8.53 (217) | 9.52 (242) | 0.25 (6) | 9.56 (243) |
| | | 215JM | 10 | | | | | 11.07 (281) | 18.18 (462) | | | | 9.56 (243) |
| | | 254JM | 15 | | | | | 11.70 (297) | 17.83 (453) | | | | 12.94 (329) |
| | | 256JM | 20 | | | | | 11.70 (297) | 19.91 (506) | | | | 12.94 (329) |
| | | 284JM | 25 | | | | | 11.70 (297) | 23.39 (594) | | | | 15.29 (388) |
| | | 286JM | 30 | | | | | 11.70 (297) | 23.39 (594) | | | | 15.29 (388) |

English dimensions are in inches. Metric dimensions are in millimeters. Metric data is presented in ().
Do not use for construction purposes unless certified.

MATERIALS OF CONSTRUCTION

| Item | BRONZE FITTED | | ALL IRON | |
|-----------------|------------------------------|---|------------------------------|---|
| | Standard Pump Construction | Optional | Standard | Optional |
| Casing | Cast Iron ASTM A48 Class 30A | N/A | Cast Iron ASTM A48 Class 30A | N/A |
| Impeller | Bronze ASTM B584-836 | CF | Cast Iron ASTM A48 Class 30A | CF |
| Wear Ring | None | Bronze ASTM B584-932 SAE660 | None | N/A |
| Shaft | Carbon Steel | St. Steel AISI 416 ASTM A582 | Carbon Steel | St. Steel AISI 416 ASTM A582 |
| Shaft Sleeve | Bronze ASTM B584-932 SAE660 | St. Steel AISI 303 ASTM A276 | St. Steel AISI 303 ASTM A276 | CF |
| Mechanical Seal | Ceramic / EPT | Tungsten Carbide / EPT | Ceramic / EPT | Tungsten Carbide / EPT |
| Seal Flush Line | Copper | CF | Stainless Steel | CF |
| Support Stand | N/A | Ductile Iron ASTM A536-84 Grade: 65-45-12 | N/A | Ductile Iron ASTM A536-84 Grade: 65-45-12 |

CF - Consult Factory

N/A - Not Available

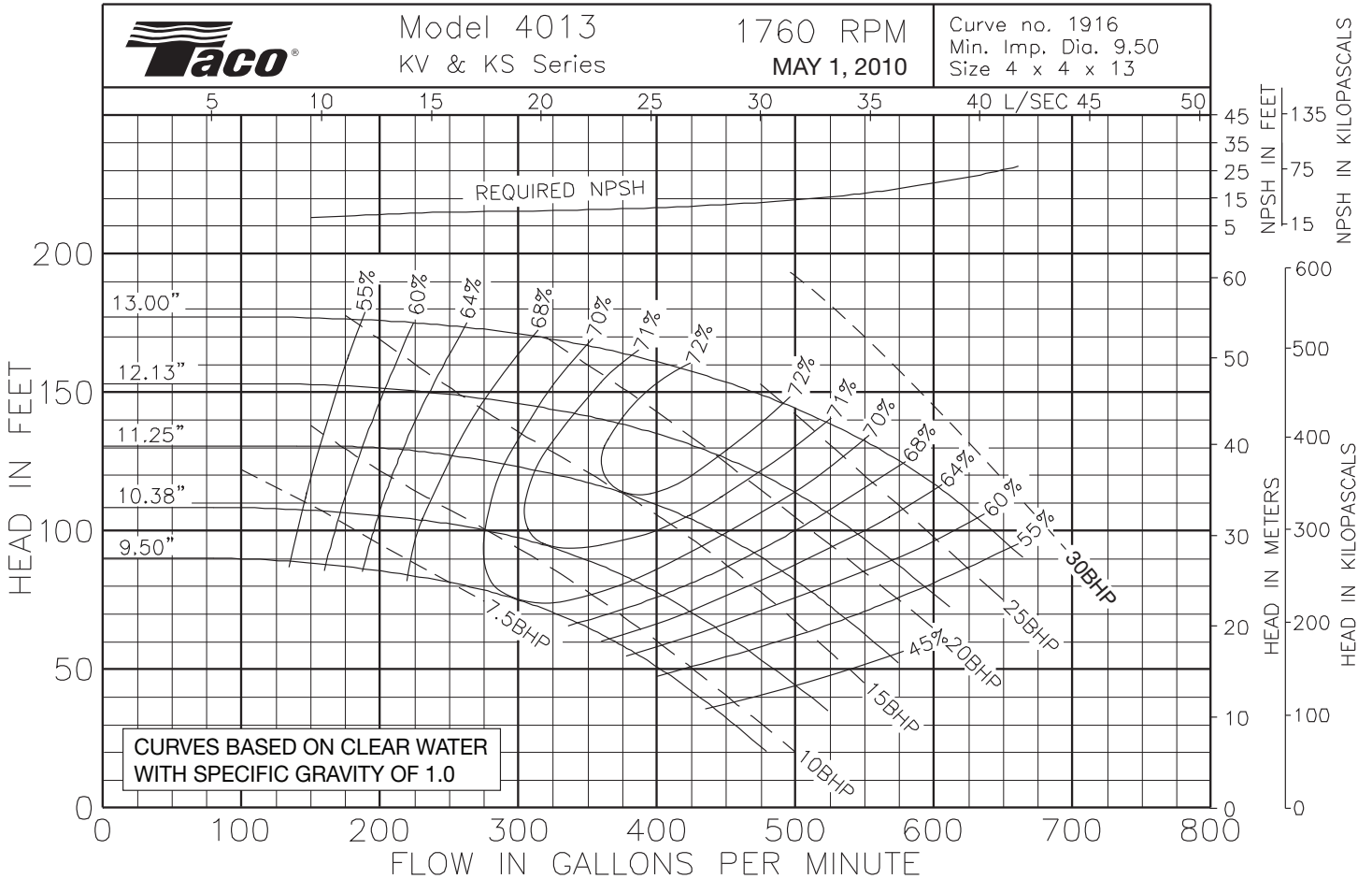
OPERATING SPECIFICATIONS

| | Standard | | Optional |
|-------------|----------------------|-----------------------|----------|
| | ANSI Class 125 | ANSI Class 250 | |
| Flange | | | |
| Pressure | 175 PSIG* (1210 KPA) | 300 PSIG** (2070 KPA) | CF |
| Temperature | 250°F (120°C) | 250°F (120°C) | CF |

Motors: All NEMA Standard (T Frame)
 * In accordance with ANSI Standard B16.1 Class 125
 ** In accordance with ANSI Standard B16.1 Class 250 Dim.

MAXIMUM ASSEMBLY WEIGHT

| Motor Frame | Weight without Optional Stand Lbs (Kg) | Weight with Optional Stand Lbs (Kg) |
|---------------|--|-------------------------------------|
| 213JM - 215JM | 416 (189) | 463 (210) |
| 254JM - 256JM | 552 (250) | 599 (272) |
| 284JM - 286JM | 703 (319) | 750 (340) |



info@lenntech.com Tel. +31-152-610-900
 www.lenntech.com Fax. +31-152-616-289

