



Submittal Data Information FI Series Pumps

301-1415

EFFECTIVE: MARCH 1, 2010

SUPERSEDES: OCTOBER 1, 2009

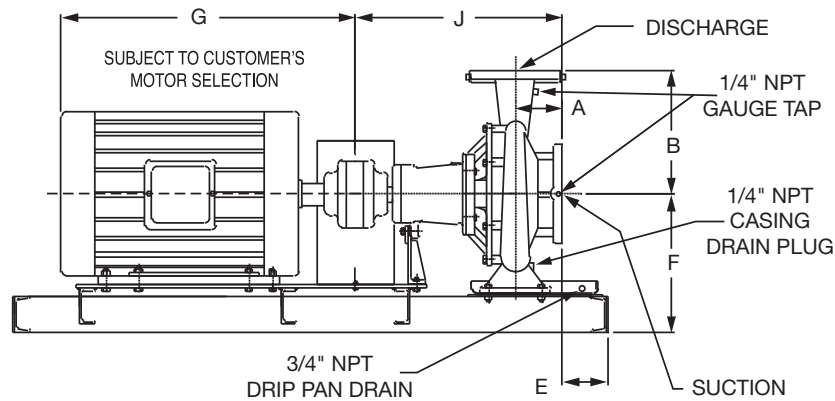
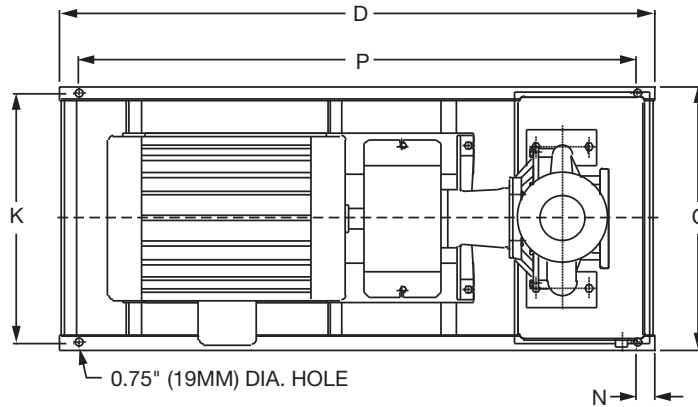
1160 RPM MODEL 3007

JOB _____ ENGINEER _____

CONTRACTOR _____ REP. _____

ITEM NO.	MODEL NO.	IMPELLER DIA.	G.P.M.	HEAD/FT.	H.P.	ELEC. CHAR.
----------	-----------	---------------	--------	----------	------	-------------

WEIGHT _____ PUMP/MOTOR _____



DIMENSIONS

50 Cycle Performance Curves attached when applicable.

Model No. Flange Size (Suction x Discharge)	Motor Frame	HP 1160 (RPM)	A		B		C	D	E		F	G	J		K	N	P	
			ANSI Class 125	ANSI Class 250	ANSI Class 125	ANSI Class 250			ANSI Class 125	ANSI Class 250			ANSI Class 125	ANSI Class 250				
3007 4 x 3 (102 x 76)	143T	0.75	4.72 (120)	5.03 (128)	10.00 (254)	10.37 (263)	16.17 (411)	41.5 (1054)	1.05 (27)	0.73 (18)	11.40 (290)	11.94 (311)	23.92 (608)	24.24 (616)	14.67 (373)	2.00 (51)	37.5 (923)	
	145T	1					16.17 (411)	41.5 (1054)	1.05 (27)	0.73 (18)		13.00 (330)			14.67 (373)		37.5 (923)	
	182T	1.5					16.17 (411)	41.5 (1054)	1.05 (27)	0.73 (18)		15.38 (391)			14.67 (373)		37.5 (923)	
	184T	2					16.17 (411)	41.5 (1054)	1.05 (27)	0.73 (18)		16.56 (421)			14.67 (373)		37.5 (923)	

English dimensions are in inches. Metric dimensions are in millimeters. Metric data is presented in ().
Do not use for construction purposes unless certified.

MATERIALS OF CONSTRUCTION

Item	BRONZE FITTED		ALL IRON	
	Std. Pump Constr.	Optional	Standard	Optional
Casing	Cast Iron ASTM A48 Class 30A	N/A	Cast Iron ASTM A48 Class 30A	N/A
Impeller	Bronze ASTM B584-836	N/A	Cast Iron ASTM A48 Class 30A	N/A
Wear Ring	N/A	Bronze ASTM B584-932 SAE660	N/A	N/A
Shaft	Carbon Steel AISI 1045	St. Steel AISI 416 ASTM A582	Carbon Steel AISI 1045	St. Steel AISI 416 ASTM A582
Shaft Sleeve	Bronze ASTM B584-932 SAE660	St. Steel AISI 303 ASTM A276	St. Steel AISI 303 ASTM A276	N/A
Mech. Seal	Ceramic/ EPT	CF	Ceramic/ EPT	CF
Seal Flush Line	N/A	Copper	N/A	Stainless Steel

CF - Consult Factory

N/A - Not Available

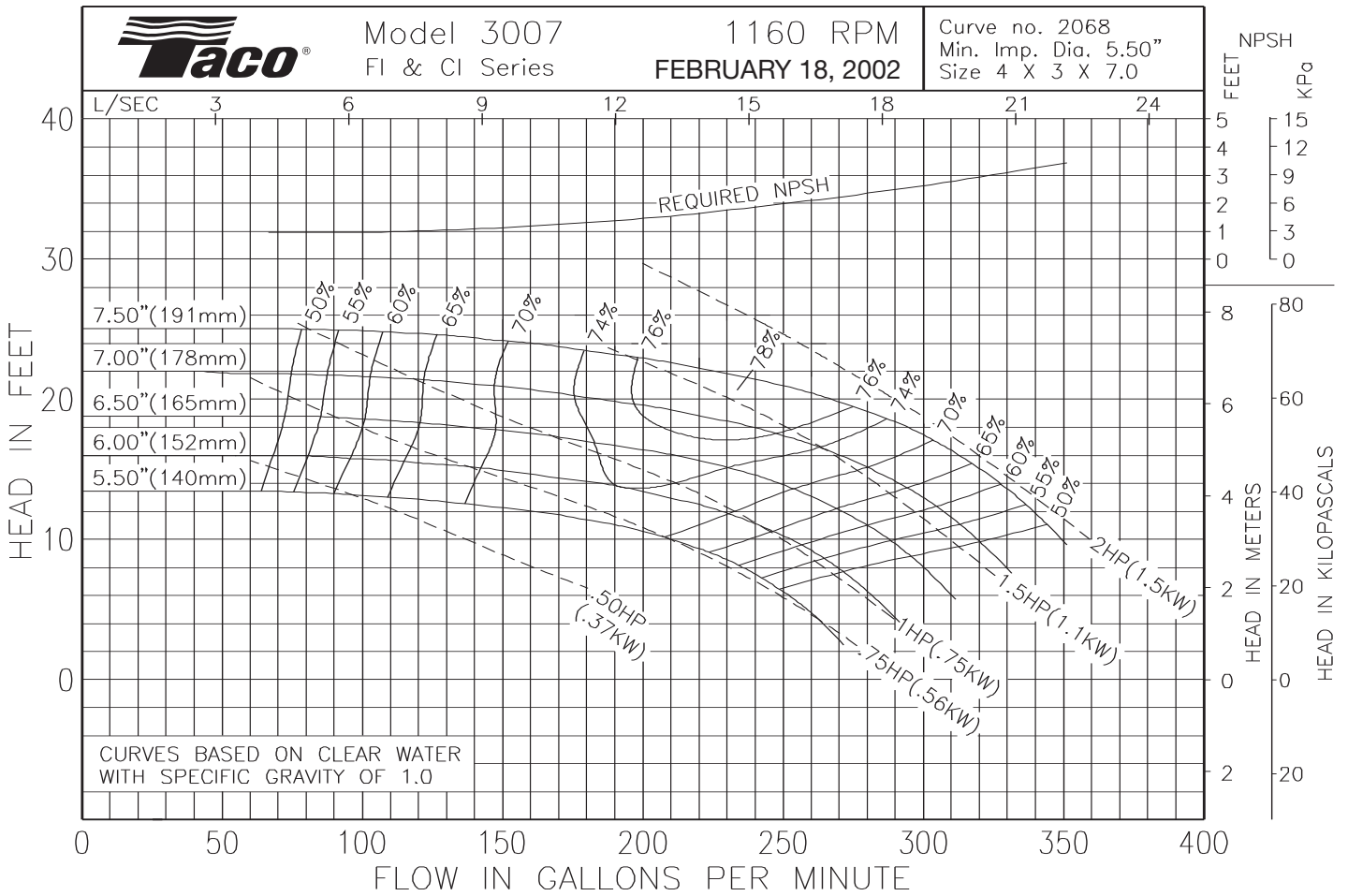
OPERATING SPECIFICATIONS

	Standard	Optional
Flange	ANSI Class 125	ANSI Class 250
Pressure	175 PSIG* (1210 KPA)	300 PSIG** (2070 KPA)
Temperature	250°F (120°C)	250°F (120°C)

Motors: All NEMA Standard (T Frame)
 * In accordance with ANSI Standard B16.1 Class 125
 ** In accordance with ANSI Standard B16.1 Class 250 Dim.

MAXIMUM ASSEMBLY WEIGHT

Motor Frame	Weight Lbs (Kg)
143T - 145T	344 (156)
182T - 184T	394 (179)





Submittal Data Information

FI Series Pumps

301-1416

EFFECTIVE: NOVEMBER 1, 2010

SUPERSEDES: MARCH 1, 2010

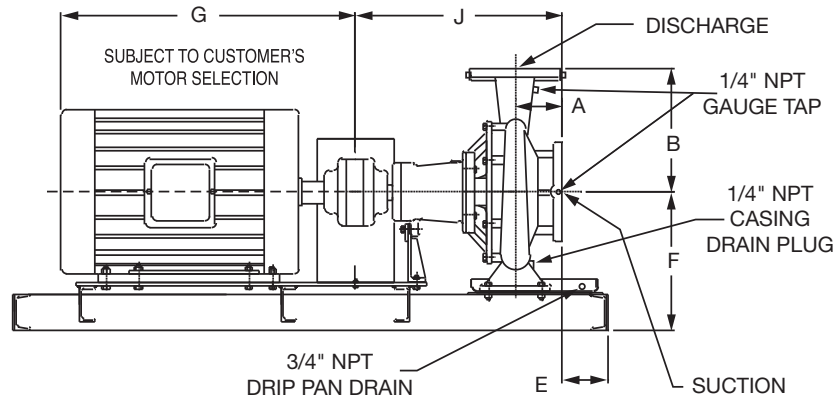
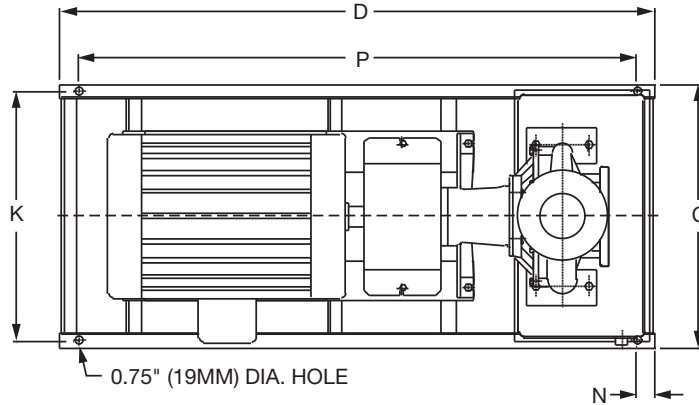
1760 RPM MODEL 3007

JOB _____ ENGINEER _____

CONTRACTOR _____ REP. _____

ITEM NO.	MODEL NO.	IMPELLER DIA.	G.P.M.	HEAD/FT.	H.P.	ELEC. CHAR.

WEIGHT _____ PUMP/MOTOR _____



DIMENSIONS

50 Cycle Performance Curves attached when applicable.

Model No. Flange Size (Suction x Discharge)	Motor Frame	HP 1760 (RPM)	A		B		C	D	E		F	G	J		K	N	P
			ANSI Class 125	ANSI Class 250	ANSI Class 125	ANSI Class 250			ANSI Class 125	ANSI Class 250			ANSI Class 125	ANSI Class 250			
3007 4 x 3 (102 x 76)	145T	2	4.72 (120)	5.03 (128)	10.00 (254)	10.37 (263)	16.17 (411)	41.5 (1054)	1.05 (27)	0.73 (18)	11.40 (290)	13.00 (330)	23.92 (608)	24.24 (616)	14.67 (373)	2.00 (51)	37.5 (923)
	182T	3					16.17 (411)	41.5 (1054)	1.05 (27)	0.73 (18)		15.38 (391)			14.67 (373)		37.5 (923)
	184T	5					16.17 (411)	41.5 (1054)	1.05 (27)	0.73 (18)		16.56 (421)			14.67 (373)		37.5 (923)
	213T	7.5					16.17 (411)	41.5 (1054)	1.05 (27)	0.73 (18)		17.94 (456)			14.67 (373)		37.5 (923)

English dimensions are in inches. Metric dimensions are in millimeters. Metric data is presented in ().
Do not use for construction purposes unless certified.

MATERIALS OF CONSTRUCTION

Item	BRONZE FITTED		ALL IRON	
	Std. Pump Constr.	Optional	Standard	Optional
Casing	Cast Iron ASTM A48 Class 30A	N/A	Cast Iron ASTM A48 Class 30A	N/A
Impeller	Bronze ASTM B584-836	N/A	Cast Iron ASTM A48 Class 30A	N/A
Wear Ring	N/A	Bronze ASTM B584-932 SAE660	N/A	N/A
Shaft	Carbon Steel AISI 1045	St. Steel AISI 416 ASTM A582	Carbon Steel AISI 1045	St. Steel AISI 416 ASTM A582
Shaft Sleeve	Bronze ASTM B584-932 SAE660	St. Steel AISI 303 ASTM A276	St. Steel AISI 303 ASTM A276	N/A
Mech. Seal	Ceramic/EPT	CF	Ceramic/EPT	CF
Seal Flush Line	N/A	Copper	N/A	Stainless Steel

CF - Consult Factory

N/A - Not Available

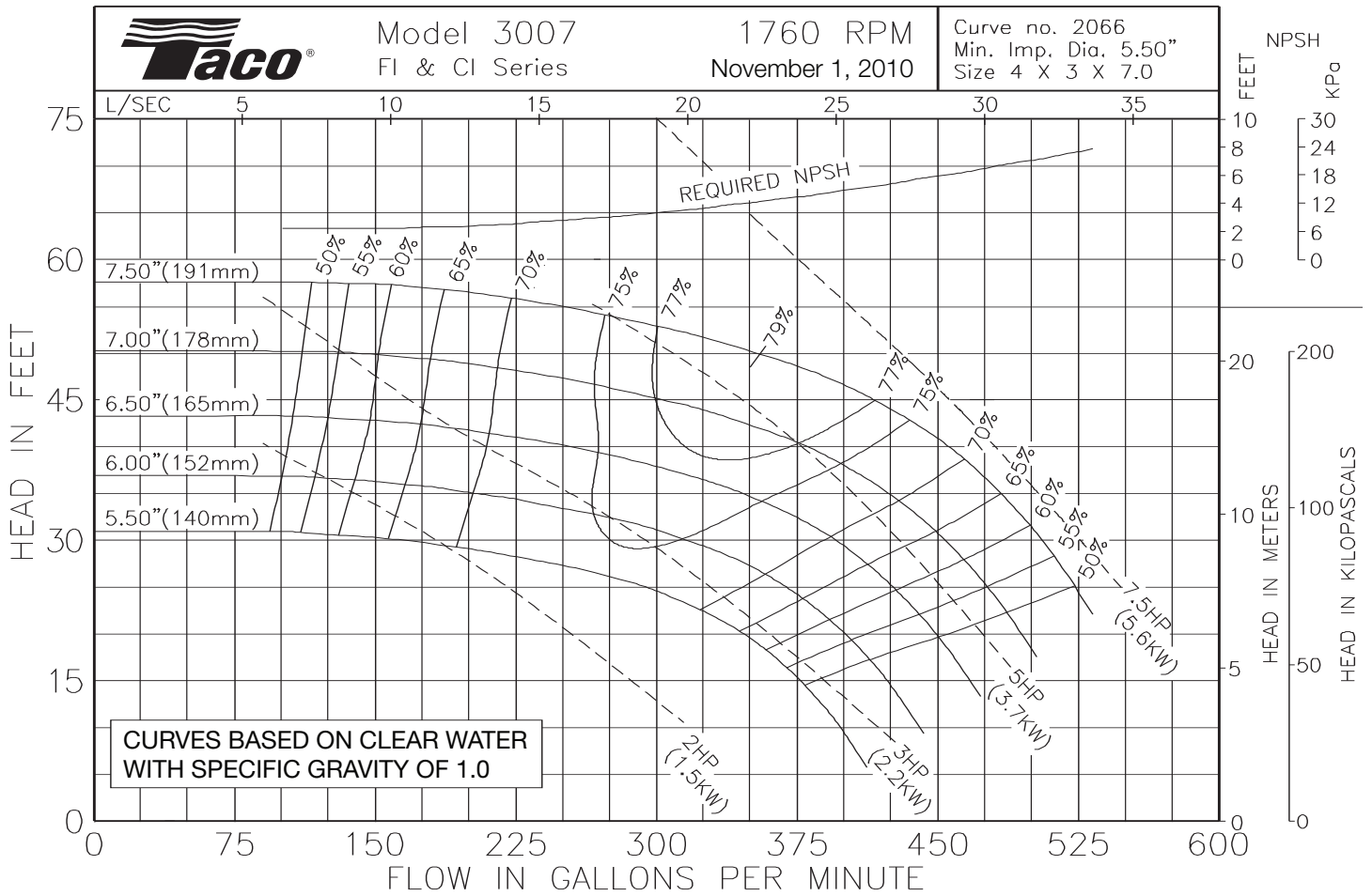
OPERATING SPECIFICATIONS

	Standard	Optional
Flange	ANSI Class 125	ANSI Class 250
Pressure	175 PSIG* (1210 KPA)	300 PSIG** (2070 KPA)
Temperature	250°F (120°C)	250°F (120°C)

Motors: All NEMA Standard (T Frame)
 * In accordance with ANSI Standard B16.1 Class 125
 ** In accordance with ANSI Standard B16.1 Class 250 Dim.

MAXIMUM ASSEMBLY WEIGHT

Motor Frame	Weight Lbs (Kg)
143T - 145T	348 (158)
182T - 184T	399 (181)
213T - 215T	461 (209)





Submittal Data Information

FI Series Pumps

301-1417

EFFECTIVE: MARCH 1, 2010

SUPERSEDES: OCTOBER 1, 2009

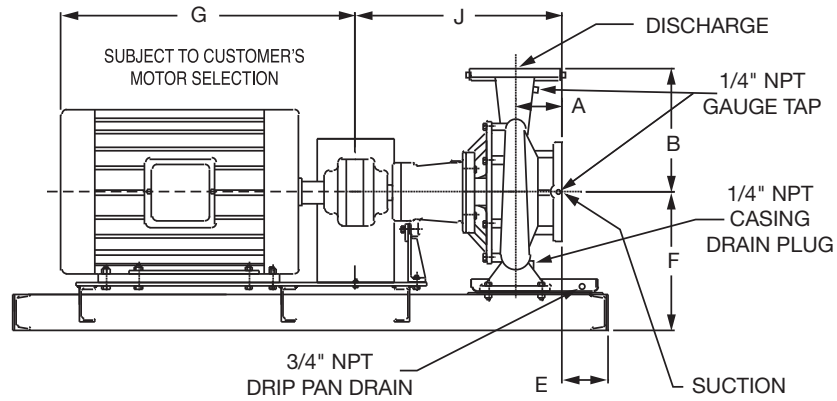
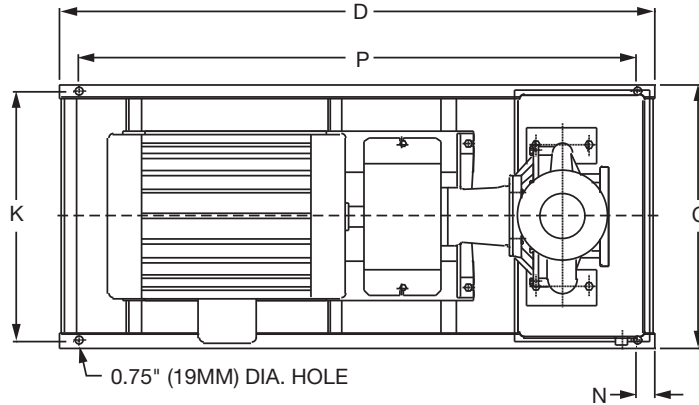
3500 RPM MODEL 3007

JOB _____ ENGINEER _____

CONTRACTOR _____ REP. _____

ITEM NO.	MODEL NO.	IMPELLER DIA.	G.P.M.	HEAD/FT.	H.P.	ELEC. CHAR.
----------	-----------	---------------	--------	----------	------	-------------

WEIGHT _____ PUMP/MOTOR _____



DIMENSIONS

50 Cycle Performance Curves attached when applicable.

Model No. Flange Size (Suction x Discharge)	Motor Frame	HP 3500 (RPM)	A		B		C	D	E		F	G	J		K	N	P
			ANSI Class 125	ANSI Class 250	ANSI Class 125	ANSI Class 250			ANSI Class 125	ANSI Class 250			ANSI Class 125	ANSI Class 250			
3007 4 x 3 (102 x 76)	256T	20	4.72 (120)	5.03 (128)	10.00 (254)	10.37 (263)	19.17 (487)	50.0 (1270)	0.79 (20)	0.69 (18)	11.40 (290)	23.19 (589)	23.92 (608)	24.24 (616)	17.67 (449)	2.00 (51)	46.0 (1168)
	284TS	25					19.17 (487)	50.0 (1270)	0.79 (20)	0.69 (18)		24.94 (633)			17.67 (449)		46.0 (1168)
	286TS	30					19.17 (487)	50.0 (1270)	0.79 (20)	0.69 (18)		25.06 (637)			17.67 (449)		46.0 (1168)
	324TS	40					19.17 (487)	50.0 (1270)	0.79 (20)	0.69 (18)		26.69 (678)			17.67 (449)		46.0 (1168)
	326TS	50					19.17 (487)	50.0 (1270)	0.79 (20)	0.69 (18)		27.69 (703)			17.67 (449)		46.0 (1168)
	364TS	60					19.17 (487)	50.0 (1270)	0.79 (20)	0.69 (18)		29.69 (754)			17.67 (449)		46.0 (1168)

English dimensions are in inches. Metric dimensions are in millimeters. Metric data is presented in ().
Do not use for construction purposes unless certified.

MATERIALS OF CONSTRUCTION

Item	BRONZE FITTED		ALL IRON	
	Std. Pump Constr.	Optional	Standard	Optional
Casing	Cast Iron ASTM A48 Class 30A	N/A	Cast Iron ASTM A48 Class 30A	N/A
Impeller	Bronze ASTM B584-836	N/A	Cast Iron ASTM A48 Class 30A	N/A
Wear Ring	N/A	Bronze ASTM B584-932 SAE660	N/A	N/A
Shaft	Carbon Steel AISI 1045	St. Steel AISI 416 ASTM A582	Carbon Steel AISI 1045	St. Steel AISI 416 ASTM A582
Shaft Sleeve	Bronze ASTM B584-932 SAE660	St. Steel AISI 303 ASTM A276	St. Steel AISI 303 ASTM A276	N/A
Mech. Seal	Ceramic/EPT	CF	Ceramic/EPT	CF
Seal Flush Line	N/A	Copper	N/A	Stainless Steel

CF - Consult Factory

N/A - Not Available

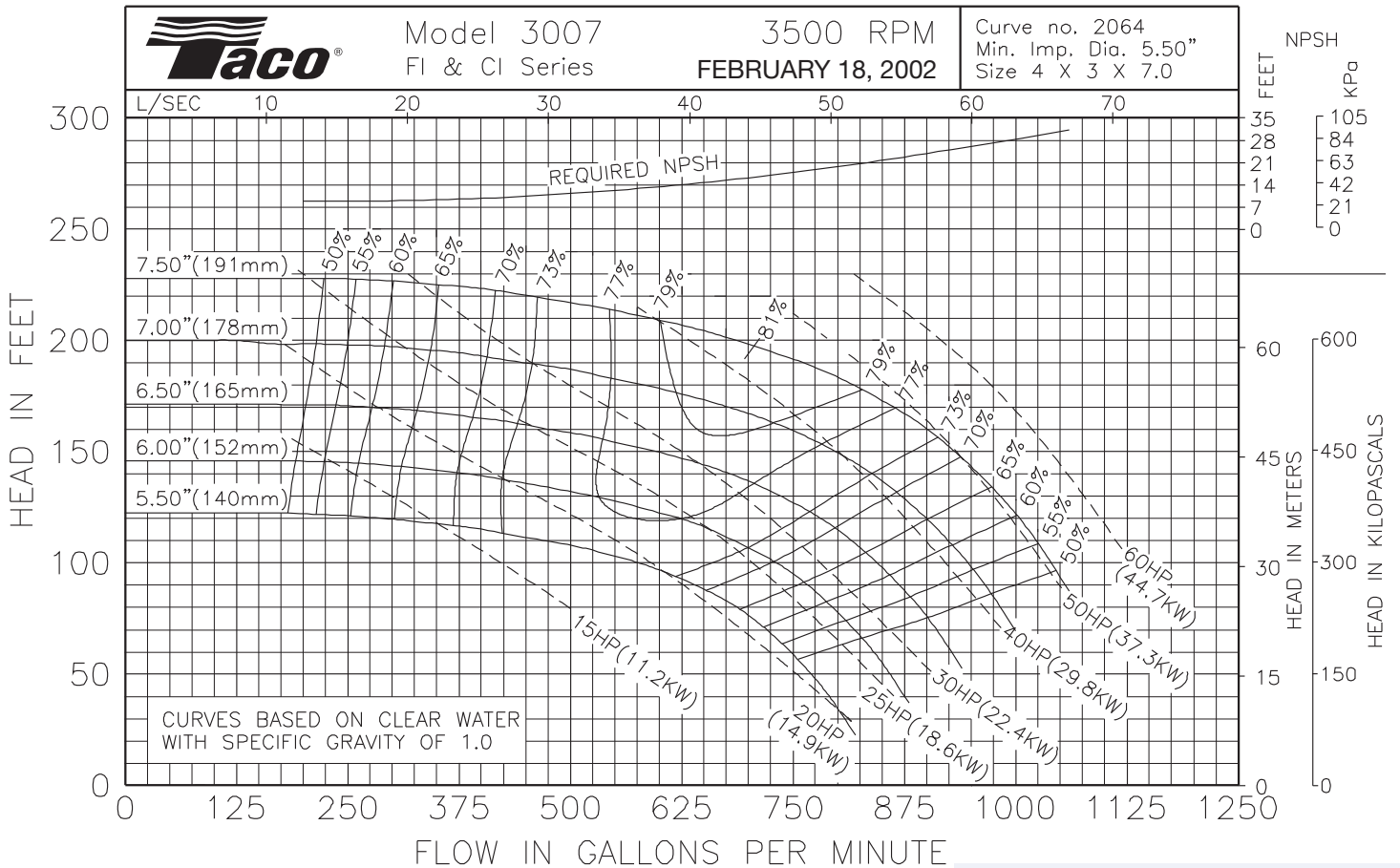
OPERATING SPECIFICATIONS

	Standard	Optional
Flange	ANSI Class 125	ANSI Class 250
Pressure	175 PSIG* (1210 KPA)	300 PSIG** (2070 KPA)
Temperature	250°F (120°C)	250°F (120°C)

Motors: All NEMA Standard (T Frame)
 * In accordance with ANSI Standard B16.1 Class 125
 ** In accordance with ANSI Standard B16.1 Class 250 Dim.

MAXIMUM ASSEMBLY WEIGHT

Motor Frame	Weight Lbs (Kg)
254T - 256T	543 (246)
284T - 286T	667 (303)
324T - 326T	860 (390)
364T - 365T	1021 (463)



LENNTECH
 WATER TREATMENT SOLUTIONS
 info@lennotech.com Tel. +31-152-610-900
 www.lennotech.com Fax. +31-152-616-289