

Specification Sheet

# Series 3000 European Version T-Line Single-Round Housings

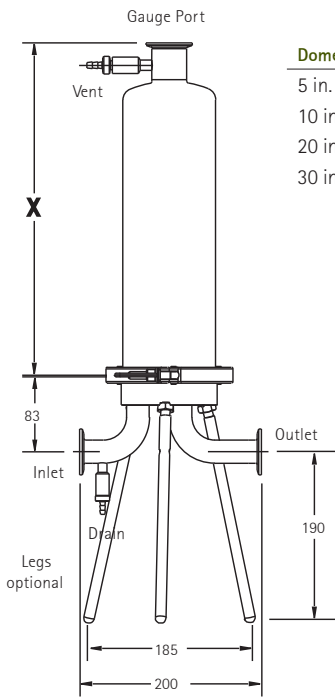


## Specifications

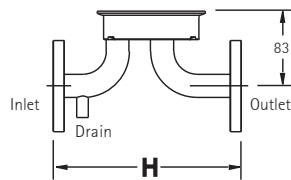
CE Pressure Equipment	European ISO® and DIN compatible housings have been designed and manufactured according to the essential requirements of the European Pressure Equipment Directive 97/23/EC. Series 3000 30-inch T-line housings are CE marked.
CFR Compliance	The sealing materials supplied comply with the Title 21 Code of Federal Regulations, section 177.2600 for rubber compounds or 177.1550 for fluorocarbon resin, 177.1520 for olefin polymers.
USP Class VI Compliance	All seal materials comply with USP <88> Biological Reactivity Tests for Class VI plastics.
Operating Conditions Range:	10 bar (145 psig) at 25 °C (77 °F) 7 bar (100 psig) at 60 °C (140 °F) 6 bar (87 psig) at 80 °C (176 °F) 3.2 bar (46 psig) at 145 °C (293 °F)
Materials of Construction (Wetted Parts) All metal surfaces in contact with the product: Plunger valve seal tip: Diaphragm valve membrane: Gasket and plunger valve seal: Optional gasket materials:	316L (DIN 1.4404 and DIN 1.4435) stainless steel PTFE EPDM Silicone EPDM, PTFE encapsulated fluoroelastomer
Surface Finish	All stainless steel wetted parts are electropolished Ra ≤ 0.5 µm internal, Ra ≤ 0.8 µm external.
Connections Gauge Port: Inlet/Outlet:	Ferrule (1½ in.) ISO Butt weld end, Ferrule or Flange (DN15, DN20 or DN25) DIN Butt weld end, Ferrule or Flange (DN15, DN20, or DN25)
Cartridge Code	Code 7 (tab)
Clamp	4 in. Ferrule, 3-piece 304 (DIN 1.4301) stainless steel clamp

# T-Line Housing Dimensions

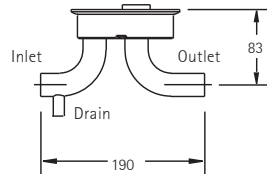
## Base Options



Dome Size	X (mm)	Connection	H (mm)
5 in.	239	DN15	200
10 in.	366	DN20	200
20 in.	620	DN25	214
30 in.	861		



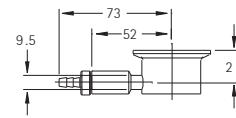
T-line Base with Flange Inlet and Outlet Connections



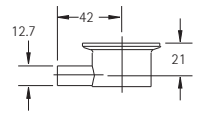
T-line Base with Butt Weld Inlet and Outlet Connections

T-line Housing with Ferrule Inlet and Outlet Connections

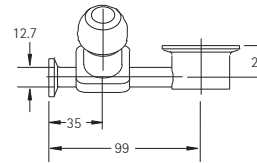
## Vent and Drain Options



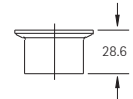
Plunger Valve



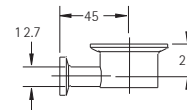
Butt Weld



Gemü Diaphragm Valve

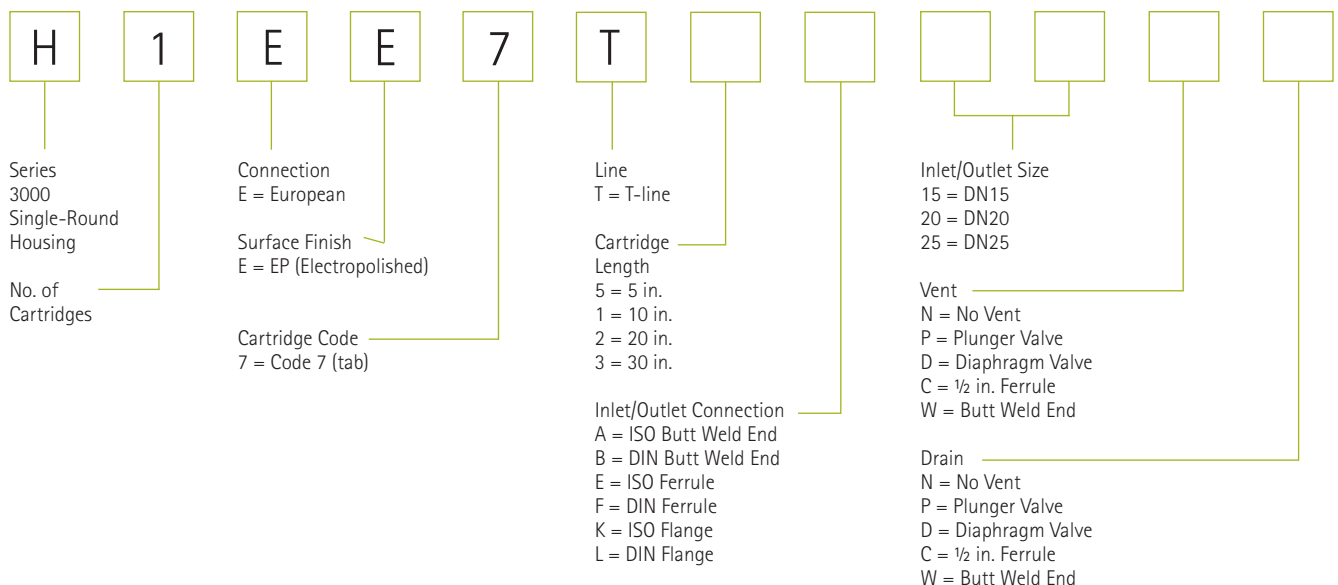


No Vent



1/2 in. Ferrule

## Catalogue No. Structure



## Ordering Information

### Accessories

Description	Qty/Pk	Catalogue No.
Legs (stand)	3	H1S31LEG3
Pressure gauge, 0 ÷ 1,100 Kpa	1	P90005
Pressure gauge, 0 ÷ 160 psi, 0 ÷ 11 bar	1	P90001

### Spare Parts

Description	Qty/Pk	Catalogue No.
<b>Valves</b>		
Plunger valve stem	2	H1PVSTEM2
Sanitary vent/drain valve seal kit with silicone O-rings and virgin PTFE sealing tips	10	HGPVSOKIT
Sanitary vent/drain valve seal kit with fluoroelastomer O-rings and virgin PTFE sealing tips	10	HGPVWOKIT
Sanitary vent/drain valve seal kit with EPDM O-rings and virgin PTFE sealing tips	10	HGPVEPKIT
Diaphragm for Gemü® diaphragm valve	2	H1DVDEP02
Gemü® diaphragm valve kit (bolts and washers)	1 kit	H1DVBWKIT

### Gaskets

Silicone is the standard gasket material. EPDM and PTFE are optional and must be ordered separately.

Description	Size/Fits	Silicone	EPDM	PTFE encapsulated fluoroelastomer
Ferrule Connections, 10/pk	ISO DN15	HGIS0E015S10	HGIS0E015E10	HGIS0E015T10
	ISO DN20	HGIS0E020S10	HGIS0E020E10	HGIS0E020T10
	ISO DN25	HGIS0E025S10	HGIS0E025E10	HGIS0E025T10
	DIN DN15	HGDINF015S10	HGDINF015E10	HGDINF015T10
	DIN DN20	HGDINF020S10	HGDINF020E10	HGDINF020T10
	DIN DN25	HGDINF025S10	HGDINF025E10	HGDINF025T10
	¾ in.	HGTC075SP	HGTC075EP	HGTC075TO
Flange Connections, 10/pk	4 in.	HGTC400SP	HGTC400EP	HGTC400TO
	ISO DN15	HGIS0K015S10	HGIS0K015E10	
	ISO DN20	HGIS0K020S10	HGIS0K020E10	
	ISO DN25	HGIS0K025S10	HGIS0K025E10	
	DIN DN15	HGDINL015S10	HGDINL015E10	
	DIN DN20	HGDINL020S10	HGDINL020E10	
	DIN DN25	HGDINL025S10	HGDINL025E10	

### End Caps

All end caps are 316L (DIN 1.4404 and 1.4435) stainless steel.

Description	Size/Fits	Qty/Pk	Catalogue No.
Ferrule Connections	ISO DN15; DIN DN15 or DN20	2	HPLG03400MM2
	ISO DN20 or DN25; DIN DN25	2	HPLG05050MM2
	¾ in. / ½ in.	2	HPLG00075IN2

### Clamps

All clamps are 304 (DIN 1.4301) stainless steel.

Description	Size/Fits	Qty/Pk	Catalogue No.
Ferrule Connections, 2-piece	ISO DN15; DIN DN15 or DN20	2	HCLMP3400MM2
	ISO DN20 or DN25; DIN DN25	2	HCLMP5050MM2
	¾ in.	2	HCLMP0075IN2
Ferrule Connections, 3-piece	4 in.	1	P34303

## Literature for Series 3000 Single-Round Housings

### Data Sheet

Series 3000 Single-Round Housings	DS4112EN00
-----------------------------------	------------

### Specification Sheets

Version	Line Style	Literature No.
U.S. Version	T-line Housings	SP1002ENUS
	In-line Housings	SP1001ENUS
	C-line Housings	SP1000ENUS
European Version	T-line Housings	SP1020EN00
	In-line Housings	SP1040EN00
	C-line Housings	SP1030EN00
Japanese Version	T-line Housings	SP1050EN00
	In-line Housings	SP1060EN00
	C-line Housings	SP1070EN00

To Place an Order or Receive  
Technical Assistance

**Moouf di !cw**

**Rotterdamseweg 402m**

**2629HH Delft**

**The Netherlands**

**info@lenntech.com**

**www.lenntech.com**

**Tel. +31-15-261.09.00**

**Fax. +31-15-261.62.89**



