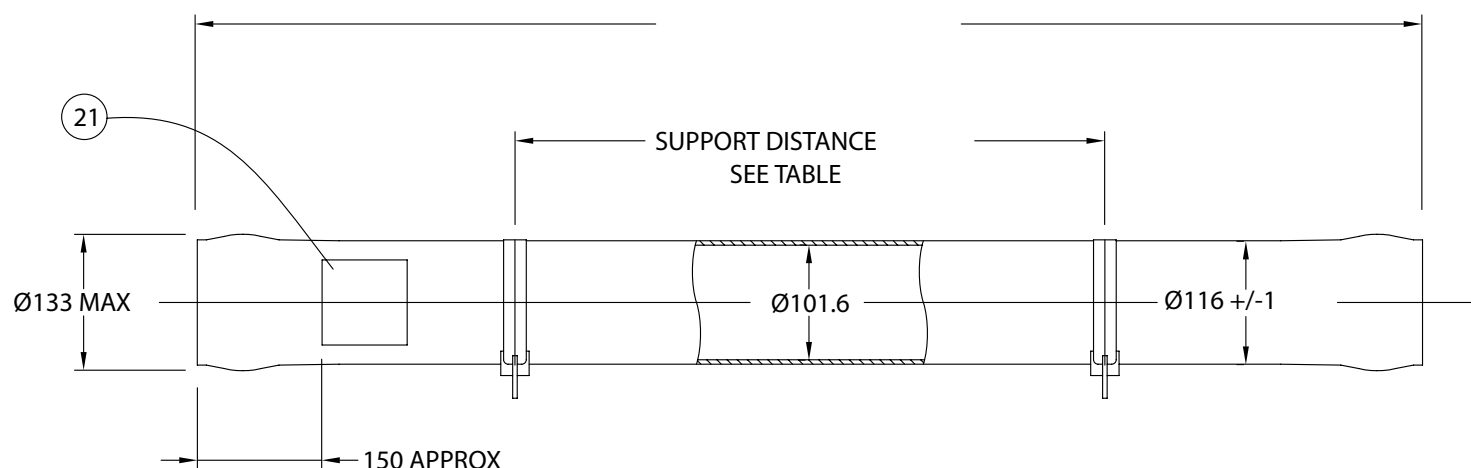


4" End Port Pressure Vessel 600 psi (41.4 bar)

ORDER REFERENCE
See Box Below



Working Pressure: 600 psi

Working Temperature: 0° to 45°C

Assembly Drawing: 1MNC 1619

Design Code: PED

Body of vessel is manufactured completely from glass reinforced epoxy resins. Pressure vessels can be produced to cover all leading manufacturers membranes regardless of length.

Please advise membrane type and length when requesting further details. Please adhere to recommended support positions, if in doubt contact Phoenix Vessel Technology.

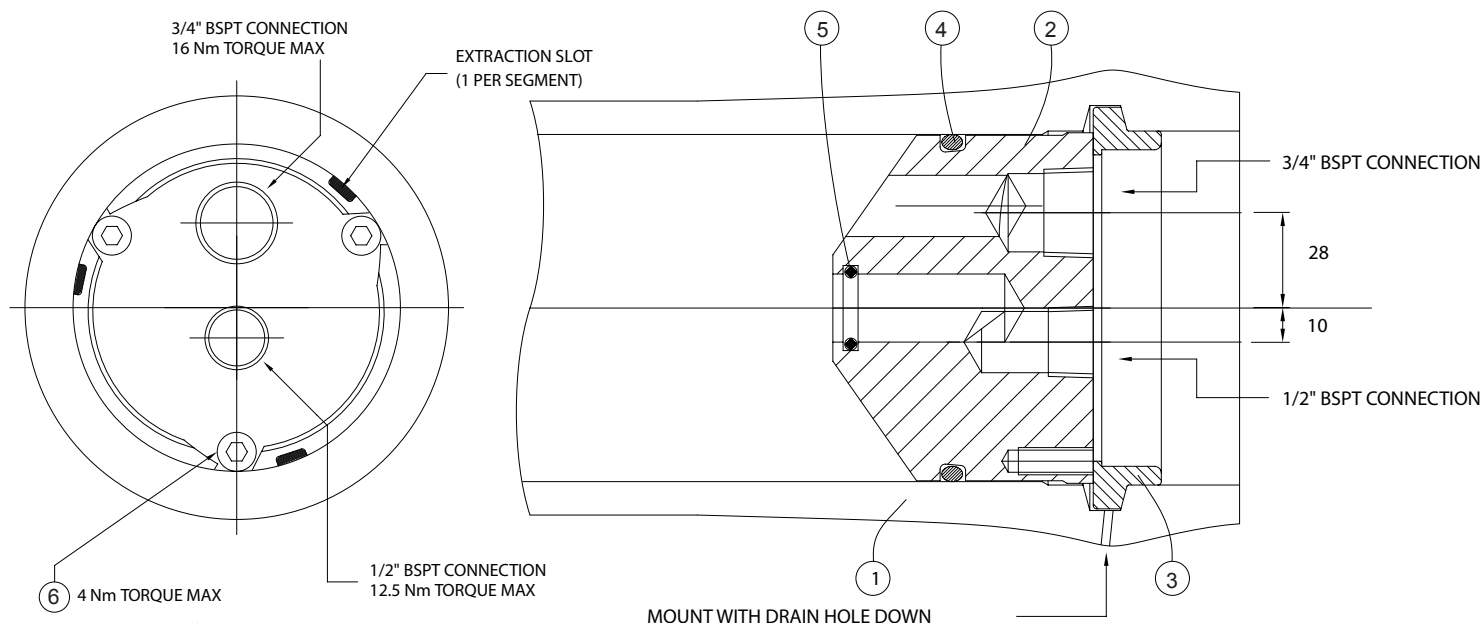
Feed and concentrate connections: 3/4" BSP (Female)

Product connections: 1/2" BSP (Female)

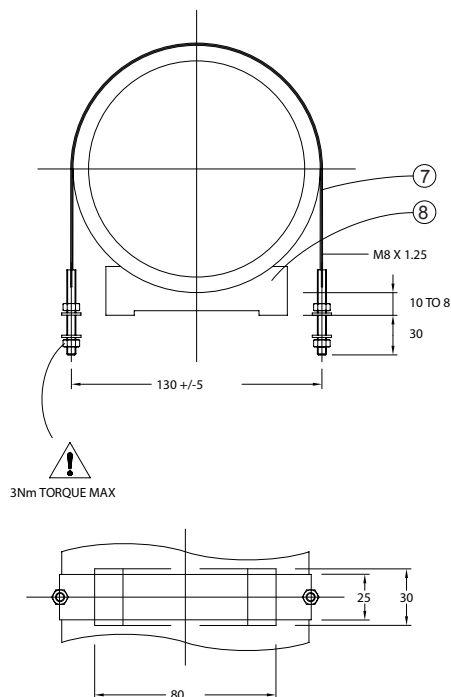
Order Reference	No of 40" Elements	Overall Length +/-4mm	Max Suport Position	Min Support Position	Max Dry Weight
4E600N.1	1	1218	800	200	12 kg
4E600N.2	2	2334	1810	620	18 kg
4E600N.3	3	3350	2450c	1310c	24 kg
4E600N.4	4	4366	2820c	2280c	30 kg
4E600N.5	5	5382	4650c	3320c	35 kg
4E600N.6	6	6398	5010c	4340c	41 kg

4" End Port Pressure Vessel 600 psi (41.4 bar)

ORDER REFERENCE
See Box Below



Item	Description	Material	Part No.	No.off
1	Vessel Body	Glass Fibre Epoxy Resin	BDY 1437	29 ^{+0.1} _{-0.5}
2	Backing Plate	Thermoplastic	CMP 1667	2
3	Retaining Ring Segment	St. Steel 316	CMP 1104	2 Sets of 3
4	'O' Seal (Endcap)	EPDM Included in item 2	BS342	2
5	'O' Seal (Endcap)	EPDM Included in item 2	BS210	2
6	Cap Head Screw	St. Steel A4 Grade	CMP 1077	4
7	Strap (Optional)	St. Steel/PVC	CMP 3570.A	2/3
8	Saddle (Optional)	Urethane/EPDM	CMP 1115	2/3
9	Shim (2 to 7 element)	ABS	CMP 3406	6



The company reserves the right to alter specifications without prior notice.
This data sheet supersedes all previous issues. Product Code: 4E600N ISSUE:E

LENNTECH

info@lenntech.com Tel. +31-152-610-900
www.lenntech.com Fax. +31-152-616-289

For lubricants and general assembly refer to
the **User Guide** on our website.