

## INDUSTRIAL DUPLEX BAG HOUSINGS



Duplex Liquid Bag Housings offer the capability of a continual flow for non-stop filtering during maintenance. Duplex systems effectively remove dirt, pipe, scale, and other substances from process liquids, and they deliver a wide variety of choices for flow rates and particulate removal. Plus, quality construction and design assure clean effluent and protection for all downstream equipment.

An optional automatic actuation system can be added to all housings for ease of operation. The automated system will switch flow between the housings after reaching a programmed differential pressure.

### FEATURES/BENEFITS

Twin housings with common connections  
Continuous flow possible  
Single handle actuation to switch between housings (4" piping and smaller) or independent controls (6" and larger)  
Carbon or Stainless Steel construction  
Each housing is factory hydro-tested

Zinc-plated quick-swing closure with eye nuts  
O-ring seals — lid & basket  
Differential, drain, and vent ports  
304 Stainless Steel strainer basket for 304 Stainless Steel housings and Carbon Steel housings  
316 Stainless Steel strainer basket for 316 Stainless Steel housings

### APPLICATIONS

Chemical  
General Industrial  
Oil and Gas  
Water

### OPTIONS

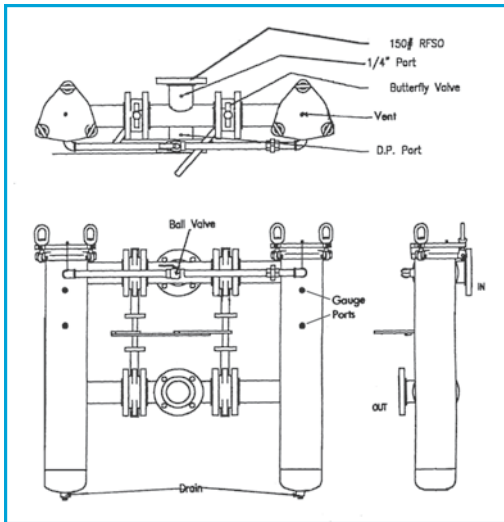
Mesh-lined strainer baskets  
Alternative seal materials  
Adjustable support legs  
Automatic switching system  
ASME code U or UM, depending upon model

## SPECIFICATIONS

Pressure Rating	150 psi @ 300°F (10.3 bar @ 148.9°C)
Connections	NPT or RF flange
Housing Lid	Zinc-plated 3-bolt swing closure with vent port
Lid Seals	FKM O-ring (single housing), Buna-N seal (multi-round housing)
Basket Seal	FKM (single housing)
Pressure Ports	Two 0.25" NPT
Construction/Finish	Carbon steel w/2-part epoxy finish inside and outside 304 or 316 Stainless steel w/satin finish on outside
Basket Material	304 Stainless Steel strainer basket with 9/64" perforations for 304 Stainless Steel housings and Carbon Steel housings 316 Stainless Steel strainer basket with 9/64" perforations for 316 Stainless Steel housings

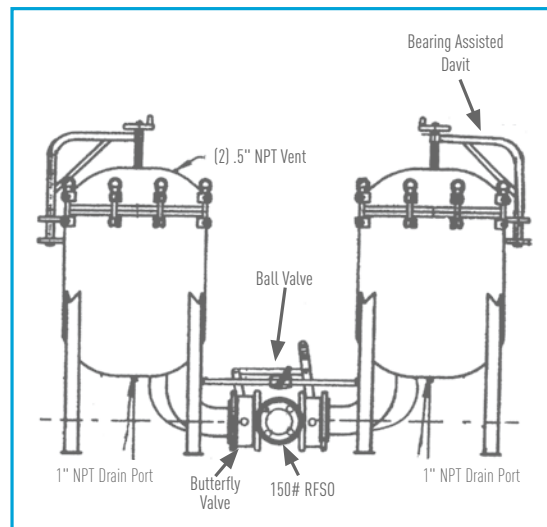
## DIMENSIONS

### SINGLE HOUSING\*



NOTE: \*Not available for L44 6" housings.

### MULTI-ROUND HOUSING



All dimensions are approximate.



FILTRATION & PROCESS

# LENNTECH

info@lennotech.com Tel. +31-152-610-900

www.lennotech.com Fax. +31-152-616-289

All Pentair trademarks and logos are owned by Pentair, Inc. or its affiliates. All other registered and unregistered trademarks and logos are the property of their respective owners. Because we are continuously improving our products and services, Pentair reserves the right to change specifications without prior notice. Pentair is an equal opportunity employer.

4003032 Rev D DE14 © 2014 Pentair Residential Filtration, LLC. All rights reserved.