

## NOCCHI VERSAILLES

### ELECTRIC SUBMERSIBLE PUMPS FOR FOUNTAINS AND WATER FEATURES

The pumps in the series VERSAILLES have been designed for use in fountains, water features and water parks.

#### APPLICATION DATA

- Type of liquid: fresh water without solid bodies.
- Maximum liquid temperature: 40°C.
- Maximum immersion below water level: 7m.
- Free clearance 1.5 mm.
- For water features with smaller transit areas, insert the foam filter (optional) in the hydraulic section.

#### OPTIONAL ACCESSORIES

- Vulcano: water feature with three-tier spray outlets.
- Gaiser: water feature with single foaming adjustable jet.
- Campana: water feature with adjustable bell form.
- Filters: foam material, transit areas of less than 1.5 mm for use on all water features.

#### MOTOR

- Dry motor with stainless steel body.
- Protection rating IP 68.
- Insulation class F.
- Single phase power supply with permanently activated capacitor.
- Thermal cutout protection incorporated in motor winding.
- Fully insulated cable connection chamber.
- Self-lubricating ball bearings.
- Rotation speed 2850 rpm.
- Suitable for continuous duty.

#### APPLICATIONS

- Installation of fountains, water features, waterfalls in water parks.



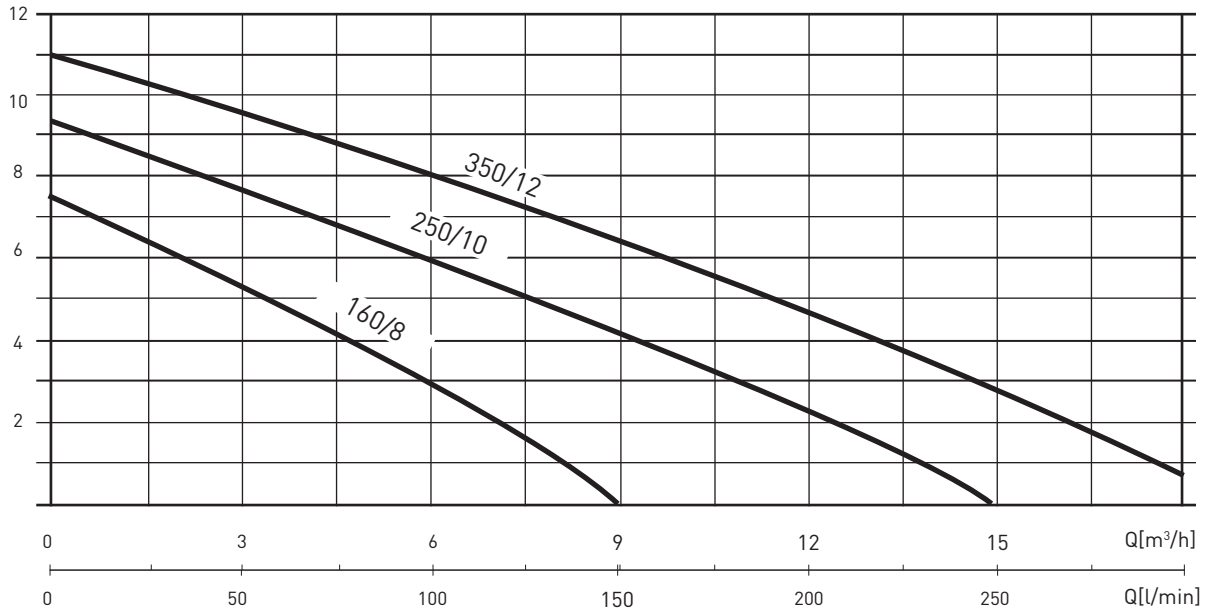
#### TABLE OF MATERIALS

Component	Material
Suction grille	Stainless steel X 5 CrNi 1810 (AISI 304)
Base	Stainless steel X 5 CrNi 1810 (AISI 304)
Pump body	Stainless steel X 5 CrNi 1810 (AISI 304)
Impeller	Cast stainless steel X5 CrNi 1810 (AISI 304)
Power cable	10m H07 RN-F with plug
Seal	Double fixed seal in rubber NBR70 with special V-ring sand guard
Motor shaft	Stainless steel X 12 CrS 13 (AISI 416) with ceramic coating at points of wear
1" F reducer	Plastic

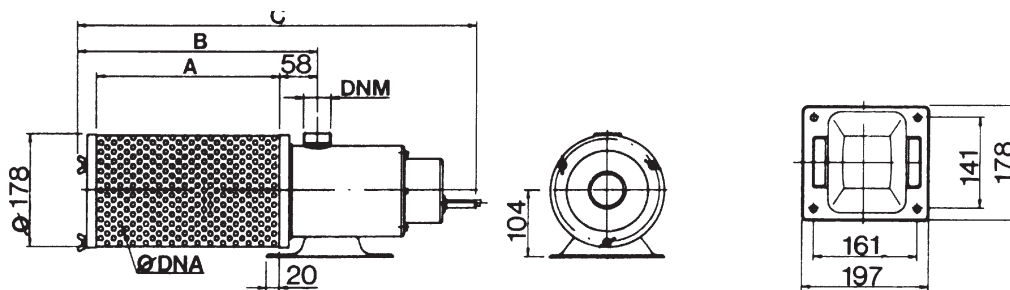
# NOCCHI VERSAILLES

## ELECTRIC SUBMERSIBLE PUMPS FOR FOUNTAINS AND WATER FEATURES

### HYDRAULIC PERFORMANCE



MODEL	Motor output (P2)		Power Motor (P1)		VOLT	In (A)	μF	Q L/min	Diameter and height of water features in cm		
	HP	kW	HP	kW					VULCANO	GAISER	CAMPANA
VERSAILLES 160/8	0.5	0.37	0.6	0.45	1 - 220 - 240 V	2.2	8	m.c.a. / m.w.c.	∅ 180 - H 360	∅ 20 - H 110	∅ 90 - H 45
VERSAILLES 250/10	0.75	0.5	0.9	0.7	1 - 220 - 240 V	4.5	10		∅ 200 - H 420	∅ 30 - H 180	∅ 95 - H 45
VERSAILLES 350/12	1.1	0.8	1.6	1.2	1 - 220 - 240 V	5.1	16		∅ 200 - H 480	∅ 50 - H 230	∅ 100 - H 45
VULCANO											
GAISER											
CAMPANA											
FILTER 1 FOR MOD. 80/7 - 160/8											
FILTER 2 FOR MOD. 250/10 - 350/12											

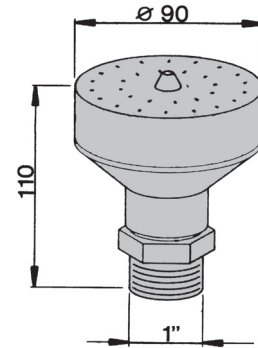


### OVERALL DIMENSIONS AND WEIGHTS

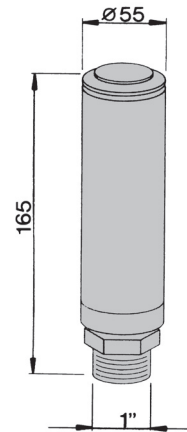
MODEL	Dimensions (mm)					Weight (kg)
	A	B	C	P.L.	DNM	
VERSAILLES 160/8	144	231	425	∅ 1.5	1" 1/4	7
VERSAILLES 250/10	285	372	620	∅ 1.5	1" 1/4	7.8
VERSAILLES 350/12	285	372	620	∅ 1.5	1" 1/4	9.3

# NOCCHI VERSAILLES

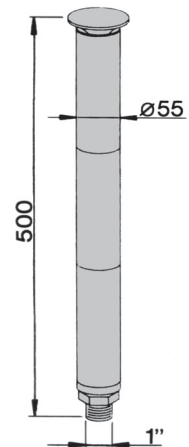
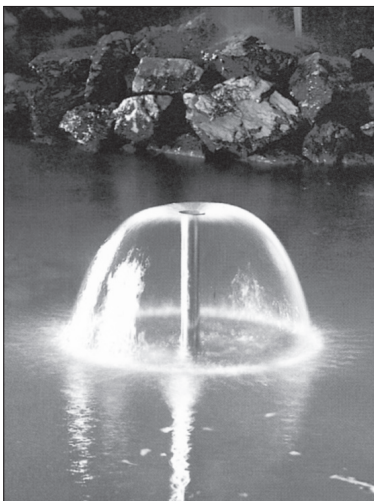
ELECTRIC SUBMERSIBLE PUMPS FOR FOUNTAINS AND WATER FEATURES



VULCANO



GAISER



CAMPANA