

NOCCHI MULTINOX-XC MULTI-CELL CENTRIFUGAL PUMPS

EASY PRIMING, MAXIMUM RELIABILITY

MULTINOX-XC horizontal multi-stage centrifugal pumps offer the following advantages: optimal hydraulic performance in terms of pressure and flow rate, minimum electric consumption, ultra-silent operation.

MOTOR

- Closed, ventilated from exterior.
- Protection rating IP 44.
- Insulation class F.
- Single phase power supply with permanently activated capacitor and thermal cutout protection incorporated in the motor winding.
- Three phase power supply with external protection to be fitted by the user.
- Rotation speed 2850 rpm.
- Continuous duty.

APPLICATIONS

- Lifting and distribution of water in domestic systems.
- Pressure booster systems.
- Fire fighting systems.
- Washing, irrigation.

APPLICATION DATA

- Type of liquid: clean water without suspended solid bodies or abrasive material.
- Maximum liquid temperature: 50°C.
- Maximum recommended suction height: 5 m with foot valve.
- Maximum operating pressure: 7 bar.

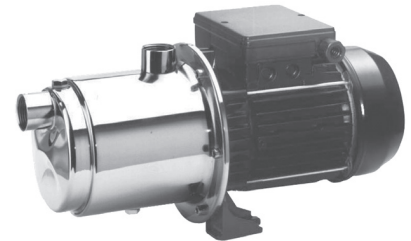
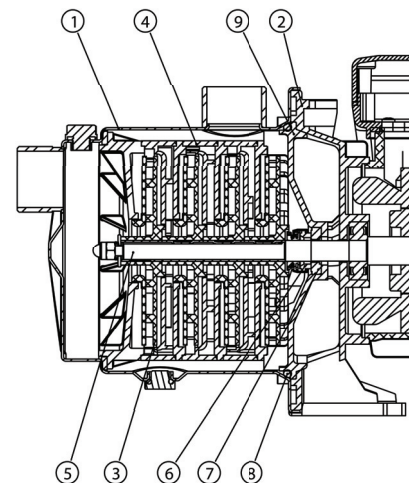


TABLE OF MATERIALS

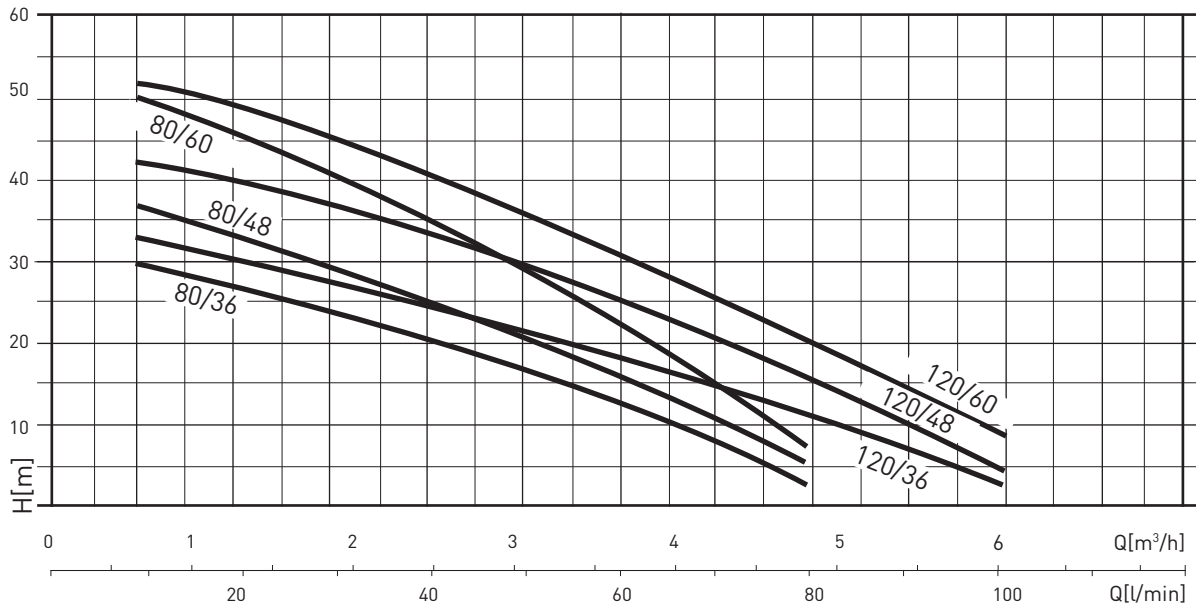
	Component	Material
1	Casing	Stainless steel X5 CrNi 18-10 (AISI 304)
2	Motor bracket	Die cast aluminum
3	Impellers	Technopolymer with shim ring in stainless steel
4	Diffusers	Technopolymer
5	Shaft (hydraulic section)	Cast iron EN GJL 200 (ex G20)
6	Mechanical gasket	Graphite
7	Counterface	Ceramic
8	Seals	NBR 70 shore
9	Seal holder base	GNF 2V Noryl



NOCCHI MULTINOX-XC

MULTI-CELL CENTRIFUGAL PUMPS

HYDRAULIC PERFORMANCE



PERFORMANCE TABLE

MODEL	Motor out-put (P2)		Motor out-put (P1)		VOLT	In (A)	μF	Q	L/min	10	20	30	40	50	60	80	100
	HP	kW	HP	kW						0.6	1.2	1.8	2.4	3	3.6	4.8	6
MULTINOX-XC 80/36M MULTINOX-XC 80/36T	0.58	0.43	0.87	0.65	1 ~ 230 V 3 ~ 230 - 400 V	2.9 23 - 1.3	12.5	m.c.a. / m.w.c.		30	27	24	21	17	13	3	
MULTINOX-XC 80/48M MULTINOX-XC 80/48T	0.75	0.55	1.1	0.8	1 ~ 230 V 3 ~ 230 - 400 V	3.7 3 - 1.7	12.5		37	34	30	25	21	15	4		
MULTINOX-XC 80/60M MULTINOX-XC 80/60T	1.1	0.8	1.5	1.1	1 ~ 230 V 3 ~ 230 - 400 V	4.5 3.2 - 1.8	20		50	46	42	36	30	22	7		
MULTINOX-XC 120/36M MULTINOX-XC 120/36T	0.75	0.55	1.1	0.8	1 ~ 230 V 3 ~ 230 - 400 V	3.7 3.2 - 1.8	12.5		33	31	29	26	22	19	10	2	
MULTINOX-XC 120/48M MULTINOX-XC 120/48T	1.1	0.75	1.5	1.1	1 ~ 230 V 3 ~ 230 - 400 V	4.5 3.3 - 2	16		42	39	37	34	30	25	15	4	
MULTINOX-XC 120/60M MULTINOX-XC 120/60T	1.2	0.9	1.8 1.67	1.35 1.25	1 ~ 230 V 3 ~ 230 - 400 V	6 3.8 - 2.2	20		53	49	47	42	38	32	20	7	

OVERALL DIMENSIONS AND WEIGHTS

MODEL	Dimensions (mm)							Weight (kg)
	A	B	C	D	E	DNA	DNM	
MULTINOX-XC 80/36	129	348	99	195	176	1"	1"	7.5
MULTINOX-XC 80/48	129	348	99	195	176	1"	1"	8
MULTINOX-XC 80/60	129	392	99	205	176	1"	1"	11
MULTINOX-XC 120/36	129	370	99	205	176	1"	1"	9
MULTINOX-XC 120/48	129	370	99	205	176	1"	1"	10
MULTINOX-XC 120/60	129	392	99	205	176	1"	1"	11

