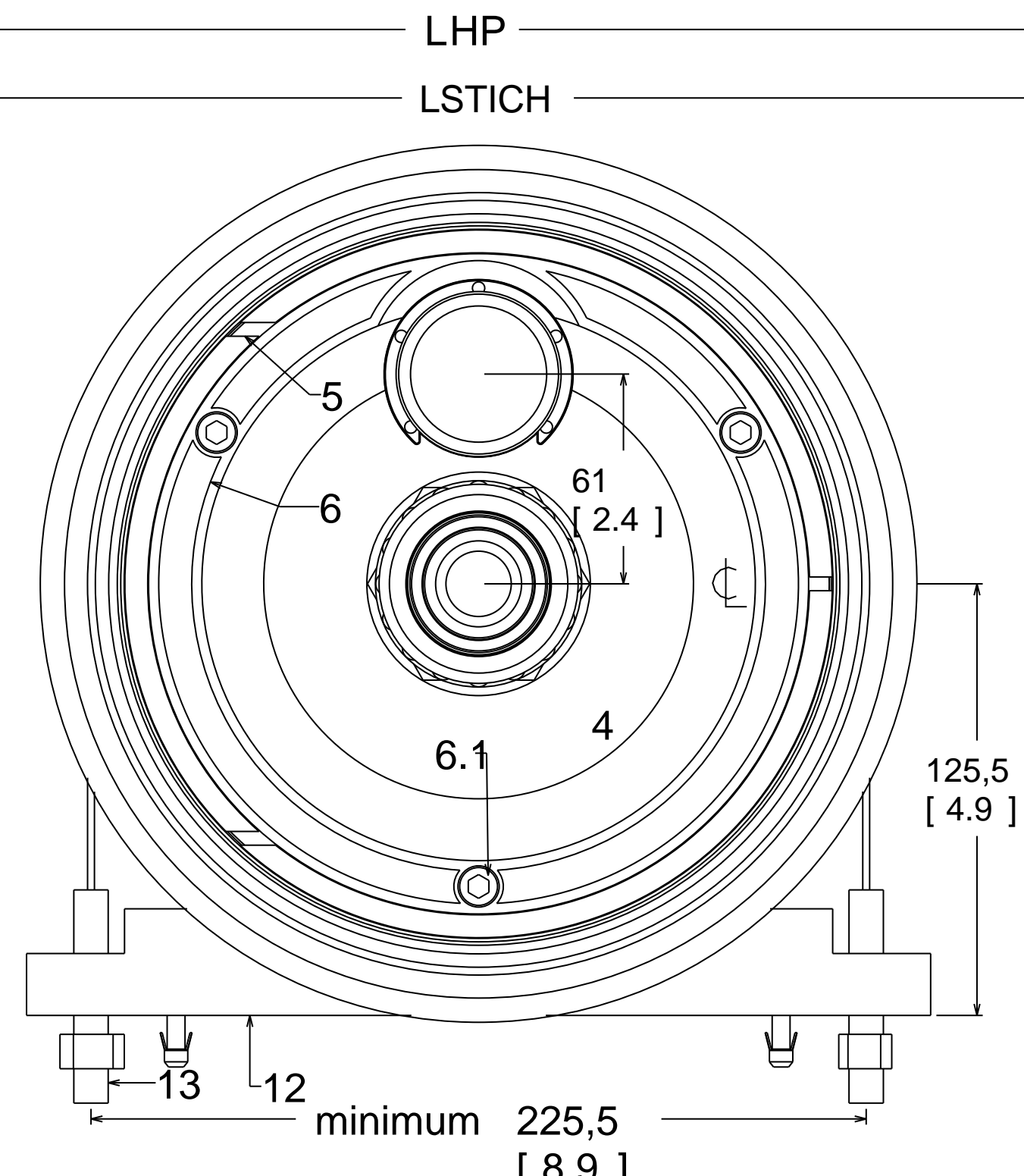
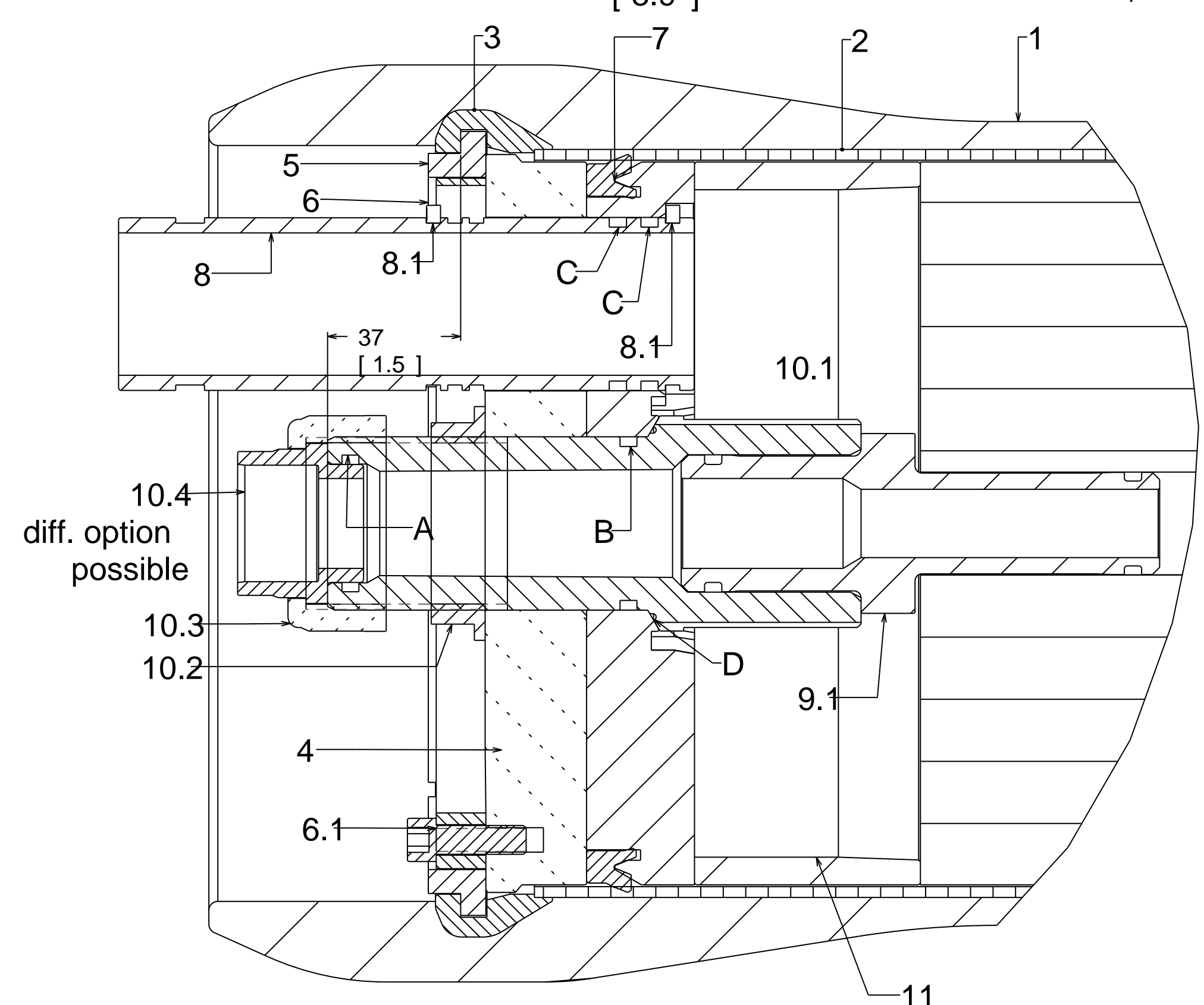
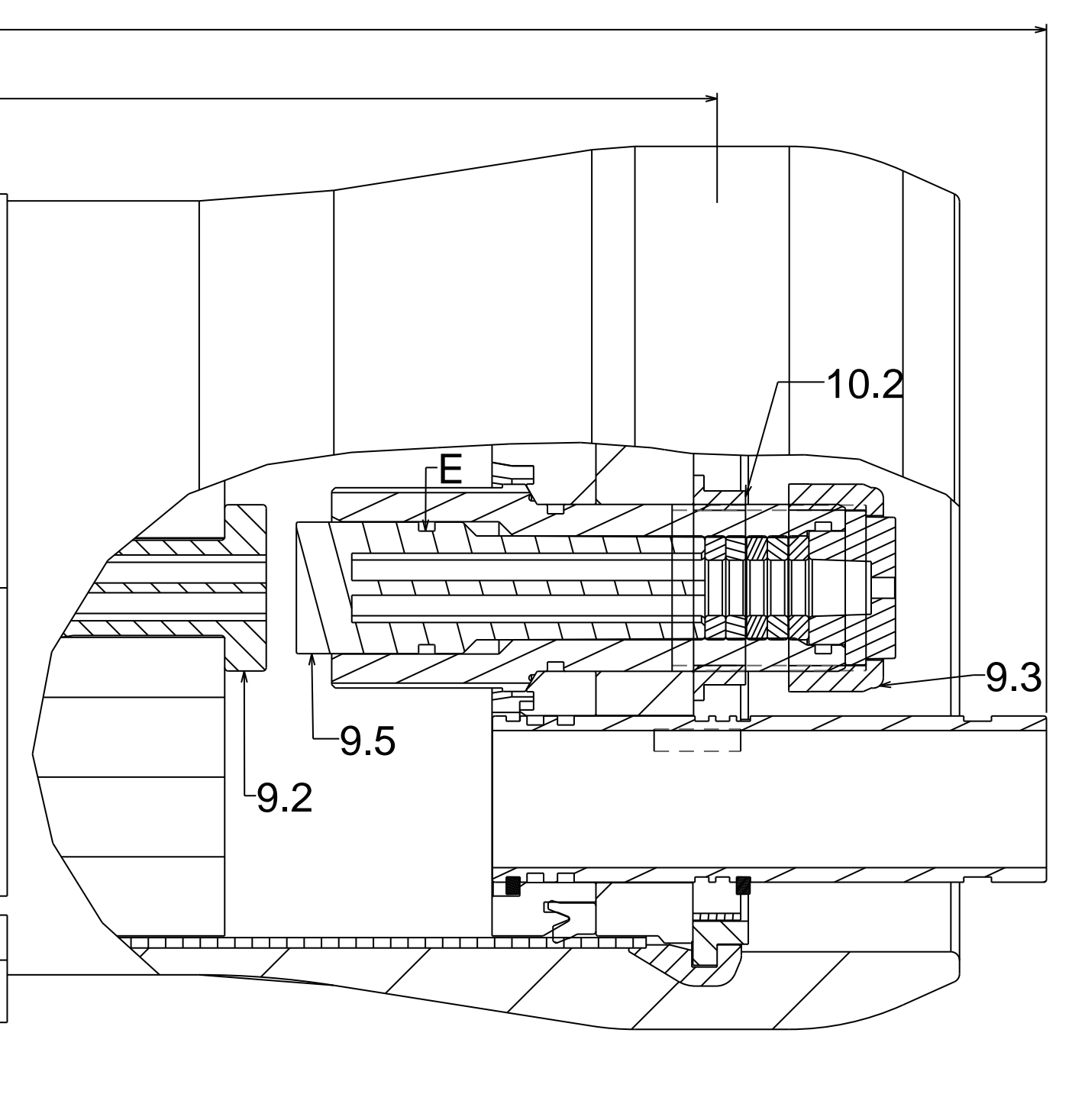


AnyChem



OPTION #9.3 9.4 9.5 can be replaced by open PermPort



**O-Rings / Endplate**

|   |                  |   |      |
|---|------------------|---|------|
| A | O-Ring 32.9x3.5  | 1 | EPDM |
| B | O-Ring 41.28x3.5 | 1 | EPDM |
| C | O-Ring 41.28x3.5 | 2 | EPDM |
| D | O-Ring 49.2x1.8  | 1 | EPDM |
| E | O-Ring 32.9x3.5  | 1 | EPDM |

Saddles and straps are options and not included in vessel supply

| Dimensions SERIES 8 inch FRONT ENTRY |                 |              |                |           |             |                           |  |
|--------------------------------------|-----------------|--------------|----------------|-----------|-------------|---------------------------|--|
| Elem.                                | Vessel #        | L-Stich [mm] | L-Stich [inch] | L-HP [mm] | L-HP [inch] | Tol L-Stich [mm]---[inch] |  |
| 1x40                                 | RO8Z1M40-V2s-42 | 1286         | 50.63          | 1476      | 58.11       | -3/+5 (0.12/0.2)          |  |
| 2x40                                 | RO8Z2M40-V2s-42 | 2302         | 90.63          | 2492      | 98.11       | -3/+5 (0.12/0.2)          |  |
| 3x40                                 | RO8Z3M40-V2s-42 | 3318         | 130.63         | 3508      | 138.11      | -3/+5 (0.12/0.2)          |  |
| 4x40                                 | RO8Z4M40-V2s-42 | 4334         | 170.63         | 4524      | 178.11      | -3/+5 (0.12/0.2)          |  |
| 5x40                                 | RO8Z5M40-V2s-42 | 5350         | 210.63         | 5540      | 218.11      | -3/+6 (0.12/0.24)         |  |
| 6x40                                 | RO8Z6M40-V2s-42 | 6366         | 250.63         | 6556      | 258.11      | -3/+6 (0.12/0.24)         |  |
| 7x40                                 | RO8Z7M40-V2s-42 | 7382         | 290.63         | 7572      | 298.11      | -3/+6 (0.12/0.24)         |  |
| 1x60                                 | RO8Z1M60-V2s-42 | 1794         | 70.63          | 1984      | 78.11       | -3/+5 (0.12/0.2)          |  |
| 3x60                                 | RO8Z3M60-V2s-42 | 4842         | 190.63         | 5032      | 198.11      | -3/+6 (0.12/0.24)         |  |
| 5x60                                 | RO8Z5M60-V2s-42 | 7890         | 310.63         | 8080      | 318.11      | -3/+6 (0.12/0.24)         |  |

We recommend:  
 1 to 4 elements 2saddles and 2 straps  
 5 to 7 elements 3saddles and 2 straps

Vessels for 60inch elements are available

Dimensions are in mm  
 Valus in brackets [ ] are in inch

Important Note:  
 Dimensions may be subject to be changed.  
 Drawing not to be used for construction unless certified

**LENNTECH**  
 info@lennotech.com Tel. +31-152-610-900  
 www.lennotech.com Fax +31-152-616-289

| REF                      | PART NAME                  | PART #     | MATERIAL |
|--------------------------|----------------------------|------------|----------|
| 1                        | Shell                      |            | FRP      |
| 2                        | Liner                      |            | PVC      |
| 3                        | Grooving                   |            | Alu/SS** |
| <b>HEAD</b>              |                            |            |          |
| 4.1                      | Frontplate                 | 78FP-M-BW  | ALU      |
| 4.2                      | Backplate                  | 78BPL-V2s  | PPE      |
| 5                        | Retaining Ring Endplate    | 68SEC      | ALU      |
| 6                        | Locking Ring               | 68SECLOCK  | PA       |
| 6.1                      | Screws for Locking Ring    | 58SCR8/25  | 316TI    |
| 7                        | Lip Ring                   | 78LIP      | EPDM     |
| <b>PORTS</b>             |                            |            |          |
| 8                        | HP-PORT                    | 78HP160    | 316L     |
| 8.1                      | Retaining Ring for HP-Port | 68SEC45    | PA       |
| 10.1                     | Permeate Port Body         | 78PP/B2    | PPE      |
| 10.2                     | Retaining Nut 1.5in        | 58NUT15Z   | PVC      |
| 10.3                     | PP Adapter Nut             | 58PP/S15   | PVC      |
| 10.4                     | PP Adapter                 | 78UN/Exx   | PVC      |
| <b>ELEMENT INTERFACE</b> |                            |            |          |
| 9.1                      | Element Adapter open       | 78ADxx     | PPE      |
| 9.2                      | Element Adapter closed     | 78ADxx/C   | PPE      |
| 9.3                      | Permeate Port Body closed  | 68PP/B2    | PVC/PP   |
| 9.5                      | Plug Set for chiming       | 18PP/CH-V2 | PVC/TPE  |
| <b>SUPPORT</b>           |                            |            |          |
| 11                       | Element Spacer             | 78SPACE_FP | PPE      |
| 12                       | Saddle                     | 58SADDLE   | PA       |
| 13                       | STRAP                      | 58STRAP    | 316TI    |

**600PSI** AnyChem™ Pressure Vessels  
 by Knappe Composites

|               |                 |                 |        |
|---------------|-----------------|-----------------|--------|
| Eng.Mgr. SIG: | Q.Ass.Mgr. SIG: | DATUM: 02.03.06 | REV: 4 |
|---------------|-----------------|-----------------|--------|

**SERIES 8 inch -- FRONT ENTRY**

|      |                    |            |
|------|--------------------|------------|
| Name | RO8ZxM40-V2s-42/R1 | Scale:none |
|------|--------------------|------------|

|                                 |           |
|---------------------------------|-----------|
| Max. Working Pressure (bar/PSI) | 42 /600   |
| Max. Working Temp. ( °C / °F)   | 65 /150   |
| Min. Working Temp. ( °C / °F)   | 2 /36     |
| Max Test Pressure (bar/PSI)     | 54.6 /780 |