



IONPURE® LX-Z ENHANCED PERFORMANCE CONTINUOUS ELECTRODEIONIZATION (CEDI) MODULES FOR INDUSTRIAL APPLICATIONS

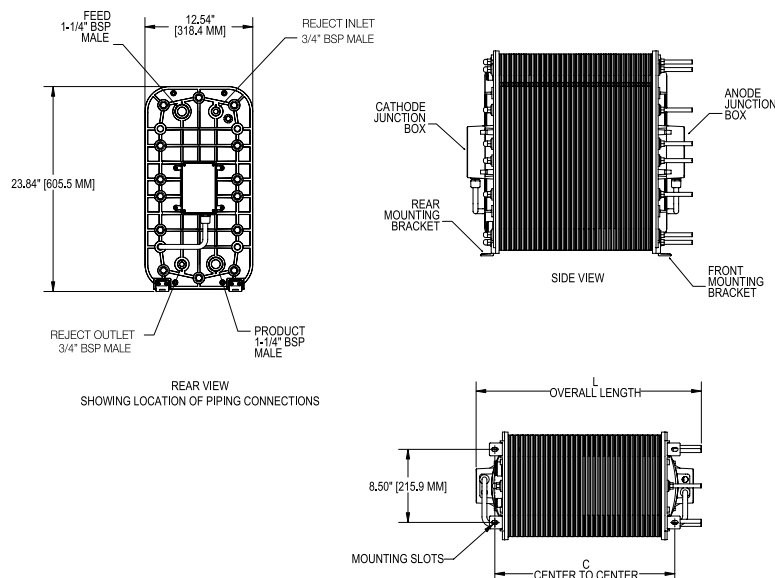
IONPURE LX-Z — INDUSTRIAL CEDI MODULE

The Ionpure® LX-Z industrial modules generate high purity water through electrodeionization and are specifically designed for industrial applications. Ionpure modules consistently deliver maximum reliability and superior performance for power, HPI/CPI and general electronics without regeneration downtime.

LX-Z Series Features

- Significantly lower operating costs, than conventional ion exchange
- Generates mixed-bed quality deionized water without the use of chemicals
- Continuous production instead of batch, with consistent quality
- Double O-ring seal guarantees leak-free operation
- No need for acid/caustic, neutralization system or exchangeable DI tanks
- Proprietary “all-filled” concentrating compartments eliminate recirculation pump and brine injection
- Superior electrical isolation
- Continuous operation

For additional information on our LX-Z industrial series of modules call +31 152 610 900 or visit our web site at www.lenntech.com



OPERATING ENVIRONMENT

Installation should be indoors with no direct sunlight and should have a maximum ambient temperature of 113°F (45°C).

QUALITY ASSURANCE STANDARDS

CE marked. Each module is factory tested to meet strict industry standards and is manufactured in an ISO 9001 and ISO 14000 quality and environmental management system.

Halal Certification. All Ionpure modules are manufactured in accordance with the Islamic Food and Nutrition Council of America standards (IFANCA), and will carry the Crescent M Halal logo.

Typical Module Performance

| Operating Parameters | |
|-------------------------------------|--|
| Recovery | 90 - 95% |
| Pressure Drop Range at Nominal Flow | 20 - 30 psi (1.4 - 2.1 bar) |
| DC Voltage | 0 - 600 |
| DC Amperage | 0 - 6.0 |
| Product Water Quality | |
| Product Resistivity | Minimum Flow > 17 Megohm-cm** |
| | Nominal Flow > 15 Megohm-cm** |
| | Maximum Flow > 7 Megohm-cm** |
| Silica (SiO ₂) Removal | 90 - 99%, depending on feed conditions |

*Actual performance may be determined using the IP-Pro projection software available from Ionpure
 **Performance based on maximum Feed Water Conductivity Equivalent (40 µS/cm).

FLOW AND PHYSICAL SPECIFICATIONS

| Model Number | Product Flow min. gpm (m ³ /hr) | Product Flow nominal gpm (m ³ /hr) | Product Flow max. gpm (m ³ /hr) | Shipping Weight lbs (kg) | Operating Weight lbs (kg) |
|--------------|--|---|--|--------------------------|---------------------------|
| IP-LXM04Z | 1.0 (0.22) | 2.0 (0.44) | 3.0 (0.67) | 150 (68) | 100 (45) |
| IP-LXM10Z | 2.5 (0.55) | 5.0 (1.1) | 7.5 (1.65) | 200 (91) | 150 (68) |
| IP-LXM18Z | 4.5 (1.1) | 9.0 (2.0) | 13.5 (3.1) | 220 (100) | 170 (77) |
| IP-LXM24Z | 6.3 (1.4) | 12.5 (2.8) | 18.8 (4.2) | 250 (113) | 200 (91) |
| IP-LXM30Z | 7.5 (1.65) | 15.0 (3.3) | 22.5 (5.11) | 270 (123) | 220 (100) |
| IP-LXM45Z | 11.3 (2.55) | 22.5 (5.1) | 33.8 (7.67) | 320 (145) | 270 (122.5) |

Maximum Feed Water Specifications

| | |
|--|-----------------------|
| Feed Water Conductivity Equivalent, including CO ₂ and Silica | < 40 µS/cm |
| Feed Water Source | RO permeate |
| Temperature | 41 - 113°F (5 - 45°C) |
| Inlet Pressure | 100 psi (7 bar) |
| Maximum Total Chlorine (as Cl) | < 0.02 ppm |
| Iron (as Fe) | < 0.01 ppm |
| Manganese (as Mn) | < 0.01 ppm |
| Sulfide (S ²⁻) | < 0.01 ppm |
| pH | 4 - 11 |
| Total Hardness (as CaCO ₃) | < 1.0 ppm |
| Dissolved Organics (TOC as C) | < 0.5 ppm |
| Silica (SiO ₂) | < 1.0 ppm |

Physical Specifications

| Item Number | Dimensions | |
|-------------|-------------------------|-------------------------|
| | L +/- 0.25" (6.4 mm) | C +/- 0.13" (3.2 mm) |
| LXM04Z | 10.12" (257 mm) | 5.78" (146.8 mm) |
| LXM10Z | 13.69" (347.7 mm) | 9.28" (235.7 mm) |
| LXM18Z | 19.22" (488.2 mm) | 13.93" (353.8 mm) |
| LXM24Z | 23.69" (601.7 mm) | 17.43" (442.7 mm) |
| LXM30Z | 27.42" (696.5 mm) | 20.92" (531.3 mm) |
| LXM45Z | 35.72" (907.3 mm) | 29.44" (747.7 mm) |



LENNTECH

info@lennotech.com Tel. +31-152-610-900
 www.lennotech.com Fax. +31-152-616-289

Ionpure is a trademark of Evoqua, its subsidiaries or affiliates, in some countries.

All information presented herein is believed reliable and in accordance with accepted engineering practices. Evoqua makes no warranties as to the completeness of this information. Users are responsible for evaluating individual product suitability for specific applications. Evoqua assumes no liability whatsoever for any special, indirect or consequential damages arising from the sale, resale or misuse of its products.

© 2017 Evoqua Water Technologies LLC Subject to change without notice ION-LXZ-DS-0717