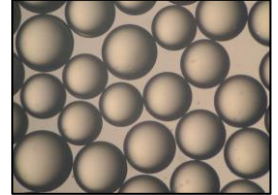


**AMBERLITE™ HPR4200 OH Ion Exchange Resin**

Uniform Particle Size, Gel, Strong Base Anion Exchange Resin for Industrial Demineralization Applications

**Description**

AMBERLITE™ HPR4200 OH Ion Exchange Resin is a high-quality resin for use in industrial demineralization applications when high performance, high purity water, and cost-effective operation is required. The chemical properties and particle size of the resin have been balanced to combine excellent operating capacity with low pressure drop, while reducing chemical regenerant and rinse water usage.



AMBERLITE HPR4200 OH is compatible with all system technologies; it has the flexibility to be used in lead single or layered anion bed and in mixed bed polishers, allowing users to inventory only one strong base anion resin for their demineralization needs. In mixed bed applications, the light color of this anion resin is designed to allow easy visual distinction from the dark-colored cation resin following backwash separation.

AMBERLITE HPR4200 OH offers a quick start-up in a single bed or a mixed bed or when paired with weak base anion AMBERLITE™ HPR9500 Ion Exchange Resin in layered bed systems. It can also be paired with weak base anion AMBERLITE™ HPR9600 Ion Exchange Resin.

**Resin Pairings**

Recommended pairing in industrial demineralization applications:

- AMBERLITE™ HPR1200 H Ion Exchange Resin (gel) – for mixed bed
- AMBERLITE™ HPR1300 H Ion Exchange Resin (gel) – for mixed bed
- AMBERLITE™ HPR9500 Ion Exchange Resin (macroporous) – for layered bed
- AMBERLITE™ HPR9600 Ion Exchange Resin (macroporous) – for layered bed

**Applications**

- Demineralization
  - Ideally when treating water with:
    - High percentage of silica
  - When the treatment goal is:
    - Removal of strong and weak acids
    - Lowest silica leakage
- Mixed bed polishing

## System Designs

Compatible with all system technologies and bed configurations:

- Co-current
- Counter-current / Hold-down
- Layered beds
- Packed beds
- Mixed beds

## Historical Reference

AMBERLITE™ HPR4200 OH Ion Exchange Resin has previously been sold as DOWEX MARATHON™ 4200 OH Ion Exchange Resin.

## Typical Physical and Chemical Properties\*\*

<b>Physical Properties</b>	
Copolymer	Styrene-divinylbenzene
Matrix	Gel
Type	Strong base anion, Type I
Functional Group	Trimethylammonium
Physical Form	Yellow, translucent, spherical beads
<b>Chemical Properties</b>	
Ionic Form as Shipped	OH <sup>-</sup>
Total Exchange Capacity	≥ 1.00 eq/L (OH <sup>-</sup> form)
Water Retention Capacity	60.0 – 66.0% (OH <sup>-</sup> form)
Ionic Conversion	
OH <sup>-</sup>	≥ 95%
<b>Particle Size</b>	
Particle Diameter §	730 ± 50 µm
Uniformity Coefficient	≤ 1.25
< 300 µm	≤ 0.3%
> 850 µm	≤ 10.0%
<b>Stability</b>	
Whole Uncracked Beads	≥ 90%
Swelling	Cl <sup>-</sup> → OH <sup>-</sup> : 20%
<b>Density</b>	
Particle Density	1.06 g/mL
Shipping Weight	655 g/L

§ For additional particle size information, please refer to the [Particle Size Distribution Cross Reference Chart](#) (Form No. 177-01775).

## Suggested Operating Conditions\*\*

Temperature Range	
OH <sup>-</sup> form †	5 – 60°C (41 – 140°F)
Cl <sup>-</sup> form	5 – 100°C (41 – 212°F)
pH Range	
Service Cycle	1 – 14
Stable	0 – 14

† Operating at elevated temperatures, for example above 60 – 70°C (140 – 158°F), may impact resin life. Contact our technical representative for details.

For additional information regarding recommended minimum bed depth, operating conditions, and regeneration conditions for [mixed beds](#) (Form No. 177-03705) or [separate beds](#) (Form No. 177-03729) in water treatment, please refer to our Tech Facts.

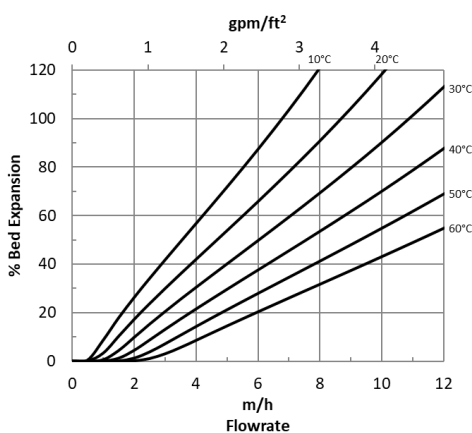
## Hydraulic Characteristics

Estimated bed expansion of AMBERLITE™ HPR4200 OH Ion Exchange Resin as a function of backwash flowrate and temperature is shown in Figure 1.

Estimated pressure drop for AMBERLITE HPR4200 OH as a function of service flowrate and temperature is shown in Figure 2. These pressure drop expectations are valid at the start of the service run with clean water.

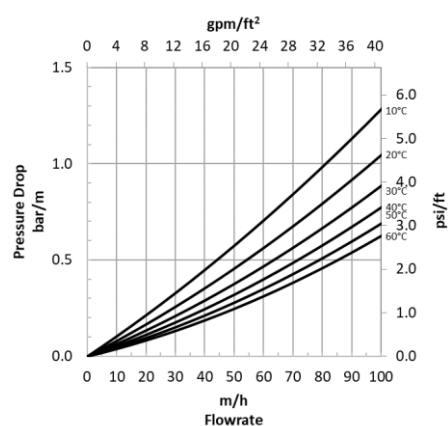
**Figure 1: Backwash Expansion**

Temperature = 10 – 60°C (50 – 140°F)



**Figure 2: Pressure Drop**

Temperature = 10 – 60°C (50 – 140°F)



## Product Stewardship

Dow has a fundamental concern for all who make, distribute, and use its products, and for the environment in which we live. This concern is the basis for our product stewardship philosophy by which we assess the safety, health, and environmental information on our products and then take appropriate steps to protect employee and public health and our environment. The success of our product stewardship program rests with each and every individual involved with Dow products—from the initial concept and research, to manufacture, use, sale, disposal, and recycle of each product.

## Customer Notice

Dow strongly encourages its customers to review both their manufacturing processes and their applications of Dow products from the standpoint of human health and environmental quality to ensure that Dow products are not used in ways for which they are not intended or tested. Dow personnel are available to answer your questions and to provide reasonable technical support. Dow product literature, including safety data sheets, should be consulted prior to use of Dow products. Current safety data sheets are available from Dow.

**LENNTECH**

info@lenntech.com Tel. +31-152-610-900

www.lenntech.com Fax. +31-152-616-289

**WARNING:** Oxidizing agents such as nitric acid attack organic ion exchange resins under certain conditions. This could lead to anything from slight resin degradation to a violent exothermic reaction (explosion). Before using strong oxidizing agents, consult sources knowledgeable in handling such materials.

**NOTICE:** No freedom from infringement of any patent owned by Dow or others is to be inferred. Because use conditions and applicable laws may differ from one location to another and may change with time, Customer is responsible for determining whether products and the information in this document are appropriate for Customer's use and for ensuring that Customer's workplace and disposal practices are in compliance with applicable laws and other government enactments. The product shown in this literature may not be available for sale and/or available in all geographies where Dow is represented. The claims made may not have been approved for use in all countries. Dow assumes no obligation or liability for the information in this document. References to "Dow" or the "Company" mean the Dow legal entity selling the products to Customer unless otherwise expressly noted. NO WARRANTIES ARE GIVEN; ALL IMPLIED WARRANTIES OF MERCHANTABILITY OR FITNESS FOR A PARTICULAR PURPOSE ARE EXPRESSLY EXCLUDED.

"All information set forth herein is for informational purposes only. This information is general information and may differ from that based on actual conditions. Please note that physical properties may vary depending on certain conditions and while operating conditions stated in this document are intended to lengthen product lifespan and/or improve product performance, it will ultimately depend on actual circumstances and is in no event a guarantee of achieving any specific results. Nothing in this document should be treated as a warranty by Dow.

