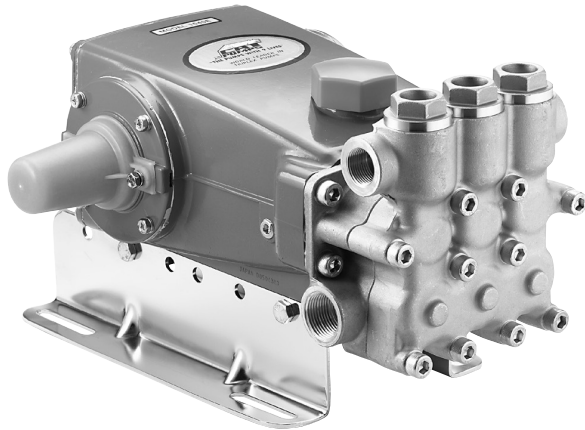




LENNTECH

info@lenntech.com
 www.lenntech.com
 Tel. +31-15-261.09.00
 Fax. +31-15-261.62.89



Model 1540E Shown
 (Rails and shaft protector sold separately)

15 Frame Plunger Pump

**Standard Brass
Model**

1540E

**Flushed
Model**

1540EC

**Stainless Steel
Model**

1541

FEATURES

- Triplex design offers high efficiency and low pulsation.
- Durable high pressure seals are lubricated and cooled by pumped liquid.
- Pre-set Lo-Pressure Seals provide secondary protection against external leaks and require no packing adjustment.
- Special high density, polished, concentric plungers provide a true wear surface and extended seal life.
- Optional FPM elastomers for compatibility with many liquids and temperatures up to 200°F.
- Wet-end easily serviced without entering crankcase.

SPECIFICATIONS

| | U.S. Measure | Metric Measure |
|--|----------------------|----------------|
| Flow | 18.0 gpm | (68 lpm) |
| Pressure Range | 100 to 1200 psi | (7 to 85 bar) |
| RPM | 1100 rpm | (1100 rpm) |
| Inlet Pressure Range. | | |
|Flooded to 70 psi | (Flooded to 4.9 bar) | |
| Bore | 1.181" | (30 mm) |
| Stroke | 1.181" | (30 mm) |
| Crankcase Capacity | 42 oz. | (1.26 l) |
| Maximum Liquid Temperature . | 140°F | (60°C) |
| Above 130°F call CAT PUMPS for inlet conditions and elastomer recommendations. | | |
| Inlet Ports (2) | 1" NPTF | (1" NPTF) |
| Flush Ports (2) (1540EC) | 1/8" NPTF | (1/8" NPTF) |
| Discharge Ports (2) | 3/4" NPTF | (3/4" NPTF) |
| Pulley Mounting . | Either Side | (Either Side) |
| Shaft Diameter | 1.181" | (30 mm) |
| Weight. | 42.6 lbs. | (21 kg) |

ELECTRIC HORSEPOWER REQUIREMENTS

| MODEL | FLOW | | PRESSURE | | | RPM |
|---------------|-------------|-----|------------|-------------|-------------|------|
| | | | psi 800 | psi 1000 | psi 1200 | |
| | U.S. gpm | lpm | bar 55 | bar 70 | bar 85 | |
| 1540E | 18 | 68 | 9.9 | 12.3 | 14.8 | 1100 |
| 1540EC | 18 | 68 | 9.9 | 12.3 | 14.8 | 1100 |
| 1541 | 18 | 68 | 9.9 | 12.3 | 14.8 | 1100 |

DETERMINING THE PUMP R.P.M. $\frac{\text{Rated gpm}}{\text{Rated rpm}} = \frac{\text{"Desired" gpm}}{\text{"Desired" rpm}}$

DETERMINING THE REQUIRED H.P. $\frac{\text{gpm} \times \text{psi}}{1460} = \text{Electric Brake H.P. Required}$

DETERMINING MOTOR PULLEY SIZE $\frac{\text{Motor Pulley O.D.}}{\text{Pump rpm}} = \frac{\text{Pump Pulley O.D.}}{\text{Motor rpm}}$

See complete Drive Packages [Includes: Pulleys, Belts, Hubs, Key] Tech Bulletin 003.
 Refer to pump **Service Manual** for repair procedure and additional technical information.

⚠ CAUTIONS AND WARNINGS

All High Pressure Systems require a primary pressure regulating device (i.e. regulator, unloader) and a secondary pressure relief device (i.e. pop-off valve, relief valve). Failure to install such relief devices could result in personal injury or damage to pump or property. CAT PUMPS does not assume any liability or responsibility for the operation of a customer's high pressure system.

Read all CAUTIONS and WARNINGS before commencing service or operation of any high pressure system. The CAUTIONS and WARNINGS are included in each service manual and with each Accessory Data sheet. CAUTIONS and WARNINGS can also be viewed online at www.catpumps.com/cautions-warnings or can be requested directly from CAT PUMPS.

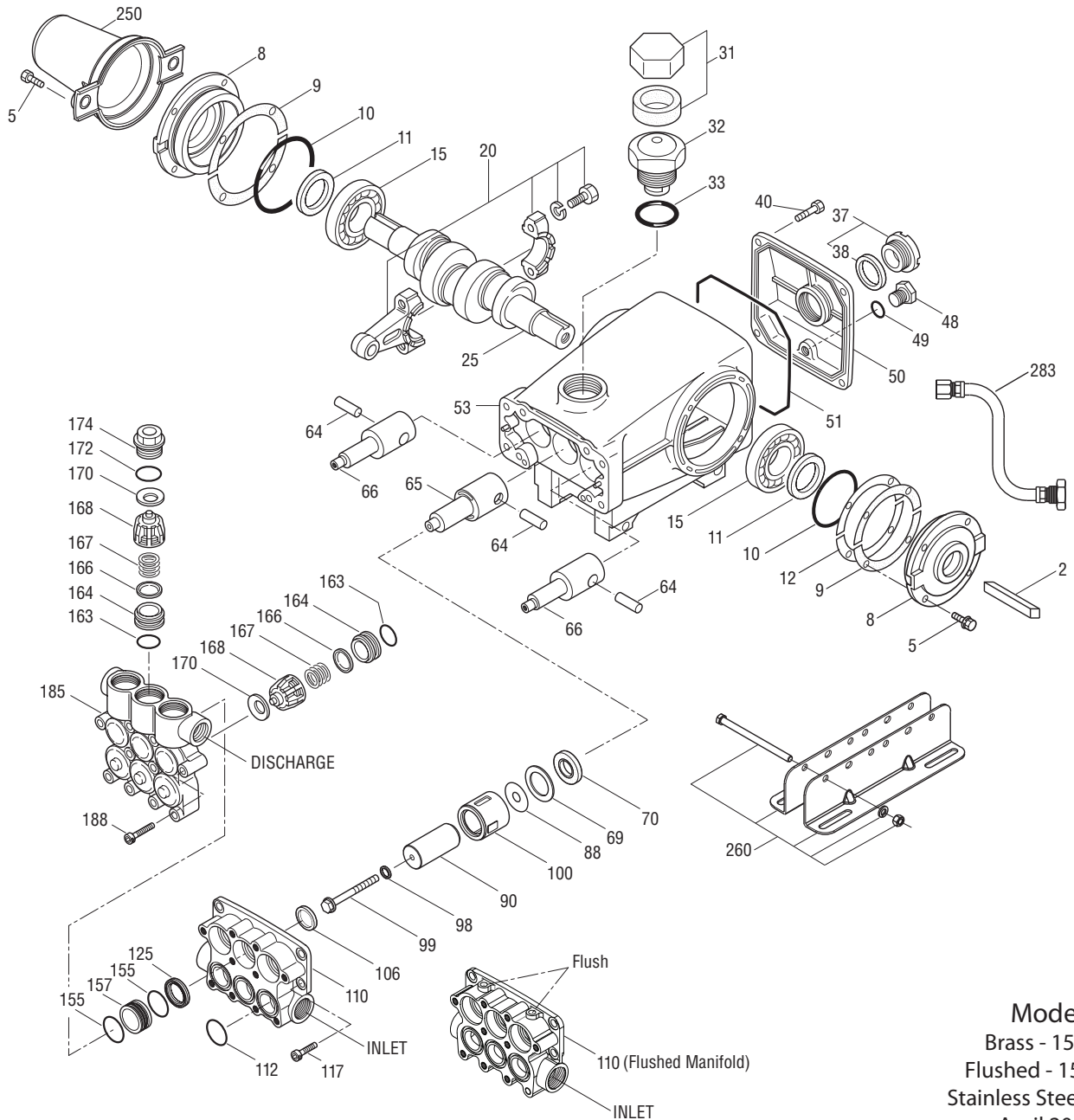
WARRANTY

View the Limited Warranty on-line at www.catpumps.com/warranty.

PARTS LIST

| ITEM | PART NUMBER | | DESCRIPTION | QTY |
|------|--------------------|-------------------|--|-----|
| | 1540E | | | |
| | 1540EC MATL | 1541 MATL | | |
| 2 | 990036 STL | 990036 STL | Key (M8x7x40) Use w/30059 and 990012 | 1 |
| — | 30067 STL | 30067 STL | Key (M8x7.5x25) Use w/30059 "H" Hub | 1 |
| 5 | 92538 S | 92538 S | Screw, HHC Sems (M6x16) | 8 |
| 8 | 49535 ALE | 43496 AL | Cover, Bearing | 2 |
| 9 | 815281 FBR | 815281 FBR | Shim, Split 2-Pc | 3 |
| 10 | 11340 NBR | 11340 NBR | O-Ring, Bearing Cover - 70D | 2 |
| 11 | 43495 NBR | 43495 NBR | Seal, Oil, Crankshaft - 70D | 2 |
| 12 | 814800 S | 814800 S | Shim, Split, 2-Pc | 2 |
| 15 | 39060 STL | 39060 STL | Bearing, Roller | 2 |
| 20 | 48600 TNM | 48600 TNM | Rod, Connecting Assembly | 3 |
| 25 | 43494 FCM | 43494 FCM | Crankshaft, Dual-End (M30) | 1 |
| 31 | 828710 PE | 828710 PE | Protector, Oil Cap w/Foam Gasket | 1 |
| 32 | 43211 ABS | 43211 ABS | Cap, Oil Filler | 1 |
| 33 | 14177 NBR | 14177 NBR | O-Ring, Filler Cap - 70D | 1 |
| 37 | 92241 — | 92241 — | Gauge, Oil, Bubble w/Gasket - 80D | 1 |
| 38 | 44428 NBR | 44428 NBR | Gasket, Flat, Oil Gauge - 80D | 1 |
| 40 | 92542 S | 92542 S | Screw, HHC Sems (M6x20) | 4 |
| 48 | 25625 STCP | 25625 STCP | Plug, Drain (1/4"x19BSP) | 1 |
| 49 | 23170 NBR | 23170 NBR | O-Ring, Drain Plug - 70D | 1 |
| 50 | 49276 ALE | 43491 AL | Cover, Rear | 1 |
| 51 | 44834 NBR | 44834 NBR | O-Ring, Rear Cover - 70D | 1 |
| 53 | 49273 ALE | 48925 AL | Crankcase (Includes Guidepin) | 1 |
| 64 | 43507 CM | 43507 CM | Pin, Crosshead | 3 |
| 65 | 48933 SHS | 49611 SS | Rod, Plunger (Center) | 1 |
| 66 | 48931 SHS | 49609 SS | Rod, Plunger (Outside) | 2 |
| 69 | 126596 STCP R | 126596 STCP R | Washer, Oil Seal | 3 |
| 70 | 43500 NBR | 43500 NBR | Seal, Oil Crankcase - 80D | 3 |
| 88 | 48937 S | 48937 S | Washer, Flat | 3 |
| 90 | 48938 CC | 48938 CC | Plunger, Ceramic (M30x65) | 3 |
| 98 | 46730 NBR | 46730 NBR | Washer, Seal - 90D | 3 |
| | 48394 FPM | 48394 FPM | Washer, Seal - 90D | 3 |
| 99 | † 48201 SS | † 48201 SS | Retainer, Plunger | 3 |
| 100 | 48936 PVDF | 48936 PVDF | Retainer, Seal | 3 |
| 106 | 49067 SNG | — | Seal, LPS w/S-Spg | 3 |
| | — | 49616 SNG | Seal, LPS w/SS-Spg | 3 |
| | 702939 ST4 | — | Seal, w/NiH-Spg | 3 |
| 110 | 48940 FBB | 49614 SS | Manifold, Inlet | 1 |
| | 49853 FBB | — | <i>Manifold, Inlet Flushed (1540EC)</i> | 1 |
| 112 | 123903 NBR | 123903 NBR | O-Ring, Inlet Manifold - 90D | 3 |
| | 76903 FPM | 76903 FPM | O-Ring, Inlet Manifold - 80D | 3 |
| 117 | 49044 S | 49044 S | Screw, HSH (M10x25) | 4 |
| 125 | 48944 SNG | — | Seal, HPS w/S | 3 |
| | 49472 STG | — | <i>Seal, HPS w/S</i> | 3 |
| | — | 49619 STG | <i>Seal, HPS w/SS</i> | 3 |
| 155 | 123903 NBR | 123903 NBR | O-Ring, Spacer - 90D | 6 |
| | 76903 FPM | 76903 FPM | O-Ring, Inlet Manifold - 80D | 6 |
| 157 | 48946 BB | 49621 SS | Spacer, HPS | 3 |
| 163 | 26143 NBR | 26143 NBR | O-Ring, Seat - 80D | 6 |
| | 14331 FPM | 14331 FPM | O-Ring, Seat - 70D | 6 |
| 164 | 48951 S | 49626 SS | Seat | 6 |
| 166 | 48686 SS | 48686 SS | Valve | 6 |
| 167 | 48687 SS | 48687 SS | Spring, Valve | 6 |
| 168 | 48994 PVDF | 48994 PVDF | Retainer, Spring | 6 |
| 170 | 123764 S | 49627 SS | Washer, Spring Retainer | 6 |
| 172 | 17629 NBR | 17629 NBR | O-Ring, Valve Plug - 80D | 3 |
| | 14183 FPM | 14183 FPM | O-Ring, Valve Plug | 3 |
| 174 | 48952 FBB | 49628 SS | Plug, Valve | 3 |
| 185 | 48948 FBB | 49623 SS | Manifold, Discharge | 1 |
| 188 | 87952 S | 87952 S | Screw, HSH (M10x55) | 10 |
| 250 | 30764 NYR | — | <i>Protector, Shaft w/2 Screws PN 125824</i> | 1 |
| | — | 30764S NY | <i>Protector, Shaft w/2 Screws PN 92538</i> | 1 |
| 260 | 30613 STZP | 30613 STZP | <i>Mounting, Angle Rail</i> | 1 |
| 269 | 30206 F | 30206 F | <i>Pulley (10") [Tech Bulletin 003]</i> | 1 |
| 270 | 30059 STL | 30059 STL | <i>Hub, "H", M30 (Keyway M8) [See Tech Bulletin 003]</i> | 1 |
| | 990012 STL | 990012 STL | <i>Hub, "B", M30 (Keyway M8) [See Tech Bulletin 003]</i> | 1 |
| 283 | 34334 — | 34334 — | <i>Kit, Oil Drain (3/8" x 24")</i> | 1 |

EXPLODED VIEW



Model
 Brass - 1540E
 Flushed - 1540EC
 Stainless Steel - 1541
 April 2013

| ITEM | PART NUMBER | | DESCRIPTION | QTY | |
|------|--------------------|------------------|--------------------------|--|---|
| | 1540E | | | | |
| | 1540EC MATL | 1541 MATL | | | |
| 299 | 816863 | FBB | 818443 <i>SS</i> | Head, Complete | 1 |
| 300 | 31770 | NBR | 31430 NBR* | Kit, Seal (Incls: 98,106,112,125,155) | 1 |
| | 76430 | <i>FPM</i> | 76430 <i>FPM</i> | Kit, Seal (Incls: 98,106,112,125,155) (.0110) | 1 |
| 310 | 31775 | NBR | 31450 NBR | Kit, Valve (Incls: 163,164,166,167,168,170,172) | 2 |
| | 76775 | FPM | 76450 FPM | Kit, Valve (Incls: 163,164,166,167,168,170,172) (.0110) | 2 |
| — | 6107 | — | 6107 | Oil, Bottle (21 oz. Bottles) ISO-68 Hydraulic (Fill to specified crankcase capacity prior to start-up) | 2 |
| — | — | — | 6119 | Lubricant, Antiseize (1 oz.) | 1 |
| — | 701931 | — | — | Sealant, Silicone (See Tech Bulletin 100) | 1 |

Bold part numbers are unique to a particular pump model. Italics are optional items.

†Production parts are different than replacement parts. R Components comply with RoHS Directive.

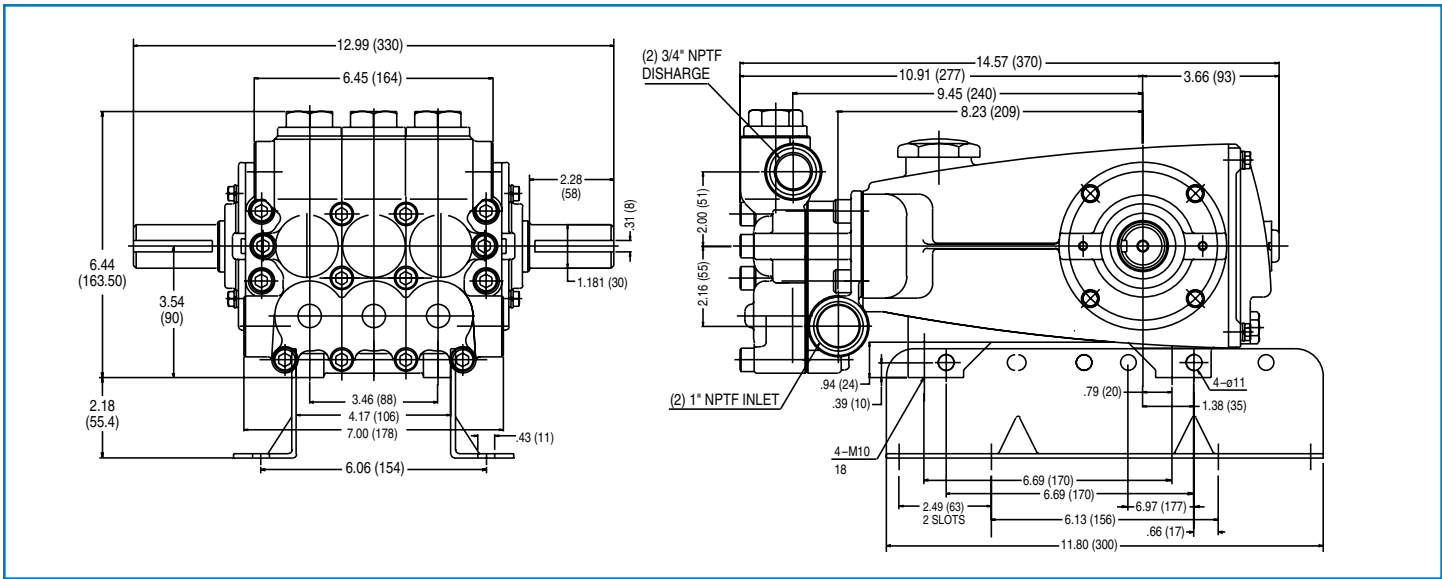
See Tech Bulletins 002, 003, 024, 035, 036, 043, 053, 074, 077, 083 and 100 for additional information.

MATERIAL CODES (Not Part of Part Number): ABS=ABS Plastic ALE=Aluminum Epoxy BB=Brass CC=Ceramic CM=Chrome-moly F=Cast Iron

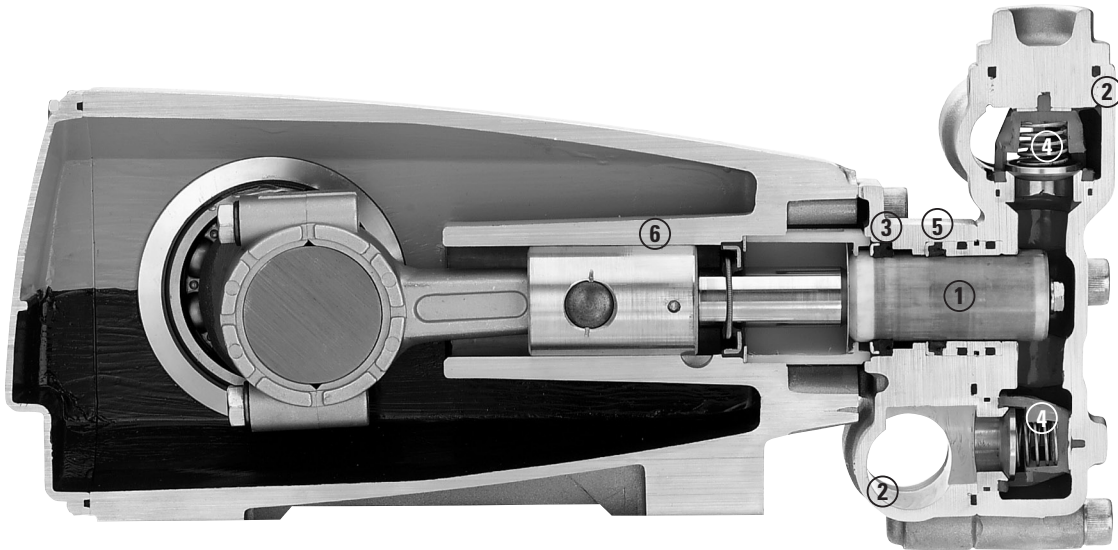
FBB=Forged Brass FCM=Forged Chrome-moly NBR=Medium N itrile (Buna-N) NY=Nylon PE=Polyethylene PVDF=Polyvinylidene Fluoride S=304SS

SHS=304SS/High Strength SS=316SS SNG=Special Blend (Buna) STG=Special Blend PTFE White ST4=Special PTFE 4 STCP=Steel/Chrome Plated STL=Steel

STZP=Steel/Zinc Plated TNM=Special High Strength



Models 1540E, 1540EC, 1541



- 1 Special concentric, high-density, polished, solid ceramic **plungers** provide a true wear surface and extended seal life.
- 2 **Manifolds** are a high strength forged brass or stainless steel for long-term, continuous duty.
- 3 100% wet **seal** design adds to service life by allowing pumped liquids to cool and lubricate on both sides of seals.
- 4 Stainless steel **valves, seats and springs** provide corrosion-resistance, ultimate seating and extended life.
- 5 Specially formulated, Cat Pump exclusive, **Hi-Pressure Seals** offer unmatched performance and seal life.
- 6 Special flushed **inlet manifolds** permits external flush for added cooling with high temperature liquids and lubrication with low lubricity liquids. (1540EC)



LENNTECH

info@lennotech.com
www.lennotech.com

Fax. +31-15-261.62.89
Tel. +31-15-261.09.00